

Chalumbin Wind Farm

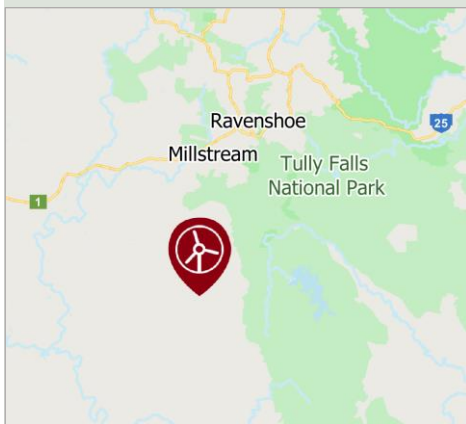
Project Update

May 2022



Photomontage of what the wind farm would look like from the Kennedy Highway

Location



Have your say on the Chalumbin Wind Farm's \$500,000 per year Community Benefit Program

All community members are encouraged to share their views to help guide the design of the project's proposed Community Benefit Program.

The program will involve an industry-leading funding commitment of \$500,000 per year for community initiatives, to commence from the start of construction and continue for the life of the wind farm.

Input is invited through a *Community Benefit Program Survey*, available on the 'Community' page of the website: chalumbinwindfarm.com.au

Community Advisory Group

Thank you to all the community members who submitted a nomination form and volunteered to be part of the Chalumbin Wind Farm Community Advisory Group. This group will play a valuable role in representing the interests of the local community and providing input throughout the life of the project.

Dr Geraldine McGuire has been appointed as independent chairperson of the group. Dr McGuire is a Malanda based Environmental Scientist and Social Performance Advisor. Over the past 30 years she has worked on major projects throughout Australia and overseas, to help facilitate sustainable solutions that achieve enduring positive outcomes.

Following Dr McGuire's appointment members will be confirmed and advised, and the group will hold its first meeting. Minutes from meetings will be available from the project website.

Assessment update

The development application, assessments and response to a request for further information have been lodged with the Queensland Government's State Assessment and Referral Agency (SARA) and are available on the SARA website at:

planning.statedevelopment.qld.gov.au/planning-framework/state-assessment-and-referral-agency/sara-application-material.

The draft Public Environment Report (PER) for the Federal Department of Agriculture, Water and the Environment's (DAWE) assessment of the proposal under the *Environment Protection and Biodiversity Conservation Act 1999* has also been submitted for adequacy review. After DAWE has reviewed the draft PER and is satisfied it has addressed the guidelines it will go on public exhibition.

During the exhibition period for the draft PER Epuron will host local information sessions to give interested members of the community an opportunity to discuss the report with the project team and address any questions and concerns.

To be notified directly of the details for the exhibition period and information sessions please ensure you are registered for project updates. Register for email updates at epuron.com.au/mailling-list-details or to receive updates by post send your address and a request to be added to the mailing list to info@chalumbinwindfarm.com.au.

Planning and assessment

Queensland Government

- 1 Site selection, initial concept and preliminary investigations
- 2 Pre-lodgement meeting with State Assessment and Referral Agency (SARA)
- 3 Studies and assessments (prescribed by SARA State code 23)
- 4 Application and assessments submitted to SARA
- 5 Request from SARA for further information and response

WE ARE HERE
Assessment

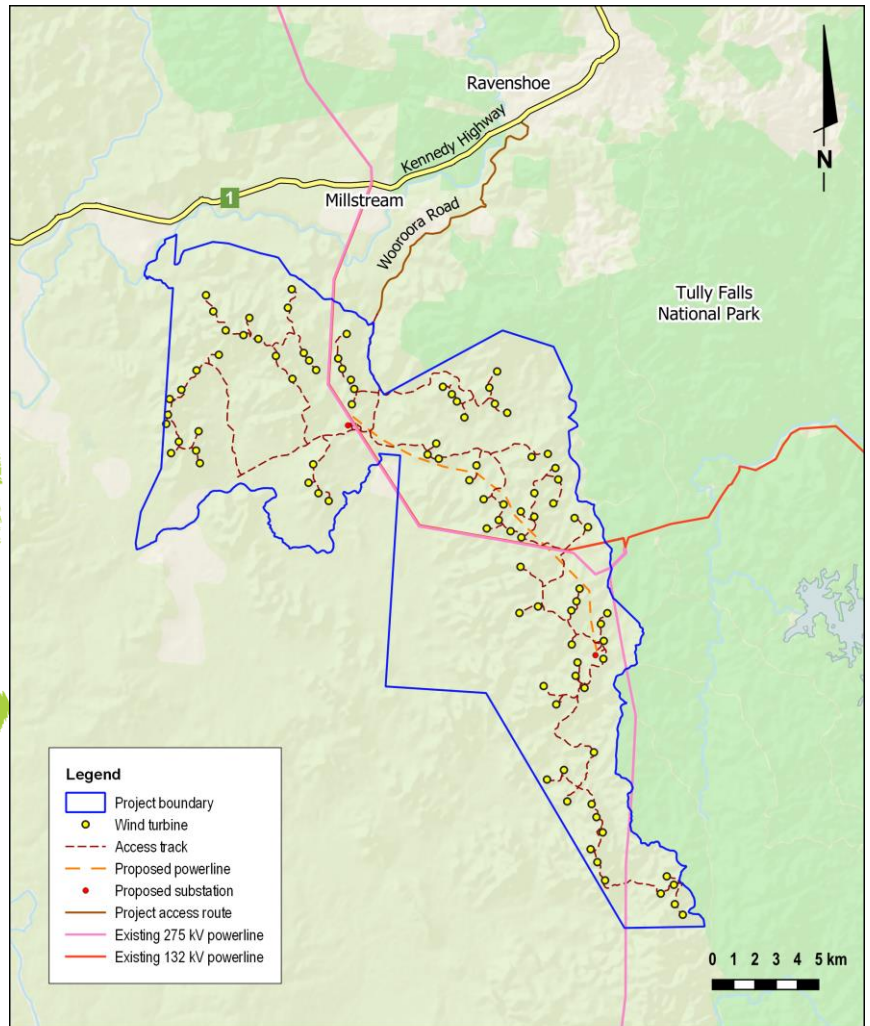
- 7 Determination

Commonwealth

- 1 Referral to the Department of Agriculture, Water and the Environment for review under the Commonwealth *Environment Protection and Biodiversity Conservation Act 1999* (EPBC Act)
- 2 Decision: controlled action (Referral 2021/8983), assessment by Public Environment Report (PER)
- 3 Draft PER guidelines issued
- 4 Preparation of draft PER

WE ARE HERE
Draft PER submitted for review

- 6 Draft PER on public exhibition
- 7 Response to submissions and preparation of final PER
- 8 Final PER submitted
- 9 Determination



The project area is west of the boundary of the Wet Tropics Queensland World Heritage Area and Tully Falls National Park. As the assessment work has been done the design has been refined and modified to reduce impacts and the disturbance footprint. The proposal involves 94 wind turbines connected to the existing 275 kV powerline that traverses the site and would have an output capacity of ~650 megawatts, equivalent to the electricity required to power 350,000 homes.

Thank you

Thank you to all those who attended the community information sessions in Ravenshoe in February and who have visited the information hub and given their time to engage with the project team. We hope the engagement has been helpful and we appreciate all the feedback we have received. Various information materials and maps are available at the information hub and on the project website.

Questions

Questions and feedback are welcome at any time and can be sent to the project team via info@chalumbinwindfarm.com.au or the form available on the 'Feedback' page of the website.

More information

Chalumbin Wind Farm Information Hub, 55 Grigg Street, Ravenshoe. Open Thursday afternoons or by appointment – call 1800 731 296.

Register for updates: epuron.com.au/mailling-list-details

Email: info@chalumbinwindfarm.com.au

Website: chalumbinwindfarm.com.au or scan QR code:

