

Burrendong Wind Farm

Project Update

March 2022



A photomontage shows the view of the wind farm from Wallawaugh Rd, Hargraves, approximately 2 km away.

Location



NSW Central-West Orana Renewable Energy Zone

The Burrendong Wind Farm site east of Lake Burrendong is located in the NSW Central-West Orana Renewable Energy Zone (CWO REZ).

The CWO REZ is one of the key areas in NSW identified by the Australian Energy Market Operator as optimal for new projects to support the state's renewable energy growth and meet its renewable energy target. For more information on NSW renewable energy zones visit

energy.nsw.gov.au/renewables/renewable-energy-zones

or scan the QR code:



Project expanded

WaterNSW, through its Renewable Energy and Storage Program, is seeking investment in renewable energy generation and storage assets on WaterNSW land to support the state's energy security and achieve the objectives outlined in the NSW Electricity Strategy.

This includes land around Burrendong Dam and based on this opportunity Epuron is participating in WaterNSW's process and has revised the Burrendong Wind Farm proposal to incorporate additional wind turbine locations on adjacent WaterNSW land.

The expanded design includes up to 105 wind turbines with an expected output capacity of 650 megawatts. Please see overleaf for a map of the proposed new site layout.

Updated requirements for the project's Environmental Impact Assessment (EIS) are due to be issued by the NSW Department of Planning and Environment. In the meantime, assessments and specialist reports for the project are being updated to reflect the expanded project.

Planning documentation for the project when published is available on the NSW Government's Planning Portal for Major Projects at planningportal.nsw.gov.au/major-projects/projects/burrendong-wind-farm (Ref SSD-8950984).

CCC meeting and information sessions

On Thursday 25 November 2021 the Burrendong Wind Farm Community Consultative Committee (CCC) met for the second time and Epuron hosted two community information sessions in Mudgee to give all interested members of the community an opportunity to learn more about the proposal and discuss it with the project team.

Minutes from the CCC meeting are available from the 'Community' page of the project website. The materials shared at the information sessions, including a presentation given by Andrew Wilson, Epuron's General Manager Development for NSW, information sheets, maps and photomontages, can be downloaded from the report of the session under the 'News' feed on the project website.

More community information sessions will be scheduled once the EIS reports have been completed.

Planning and assessment

The project is State significant development and subject to rigorous assessment by the NSW Government.

It will also be assessed under the Commonwealth *Environment Protection and Biodiversity Conservation Act 1999*, under the bilateral agreement between the NSW and Federal Governments.

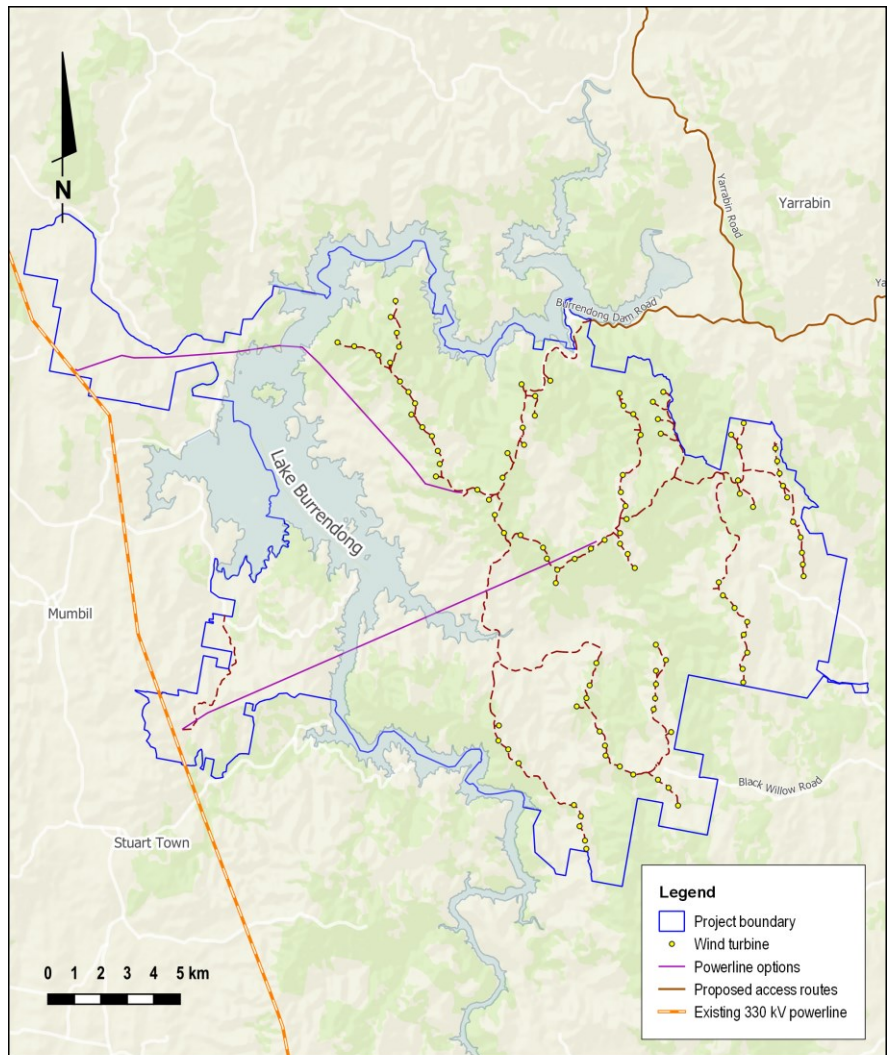
- 1 Site selection
- 2 Initial concept and consultation

WE
ARE
HERE

Updated Scoping Report submitted to the NSW Department of Planning and Environment (DPE)

Updated Referral to the Australian Department of Agriculture, Water and Environment (DAWE) for review under the *Environment Protection and Biodiversity Conservation Act 1999* (EPBC Act)

- 4 Updated Secretary's Environmental Assessment Requirements (SEARs) for Environmental Impact Statement (EIS) issued by DPE
- 5 Studies and assessments
- 6 Development application (DA) and EIS lodged with DPE
- 7 DA and EIS on public exhibition
- 8 Response to submissions
- 9 Assessment by DPE
- 10 DPE assessment report and recommendation
- 11 Determination by DAWE



The updated design involves a layout of 105 wind turbines with an estimated generation capacity of approximately 650 megawatts.

Questions and comments welcome

Thank you to all community members and other interested stakeholders who have engaged with us on this project so far. We appreciate the feedback we have received through community information sessions, the Community Consultation Committee and direct correspondence. Please send any questions and comments to the project team via email to info@burrendongwindfarm.com.au, a member of the CCC or the online feedback form at burrendongwindfarm.com.au.

Epuron and Ark Energy

In December 2021 Epuron signed a sale agreement with Ark Energy Corporation Pty Ltd, an Australian subsidiary of Korea Zinc Co. Ltd. There are some steps to be completed before the sale is finalised and further information will be available in future updates. Plans for the Burrendong Wind Farm will not be affected by the change in ownership. For more information on Ark Energy visit arkenergy.com.au

More information

Website: burrendongwindfarm.com.au or scan QR code:

Updates: epuron.com.au/mailling-list-details

Contact: Andrew Wilson

General Manager Development, NSW

Email: info@burrendongwindfarm.com.au

