



YASS WIND FARMS

Community Update No. 1 – November 2008

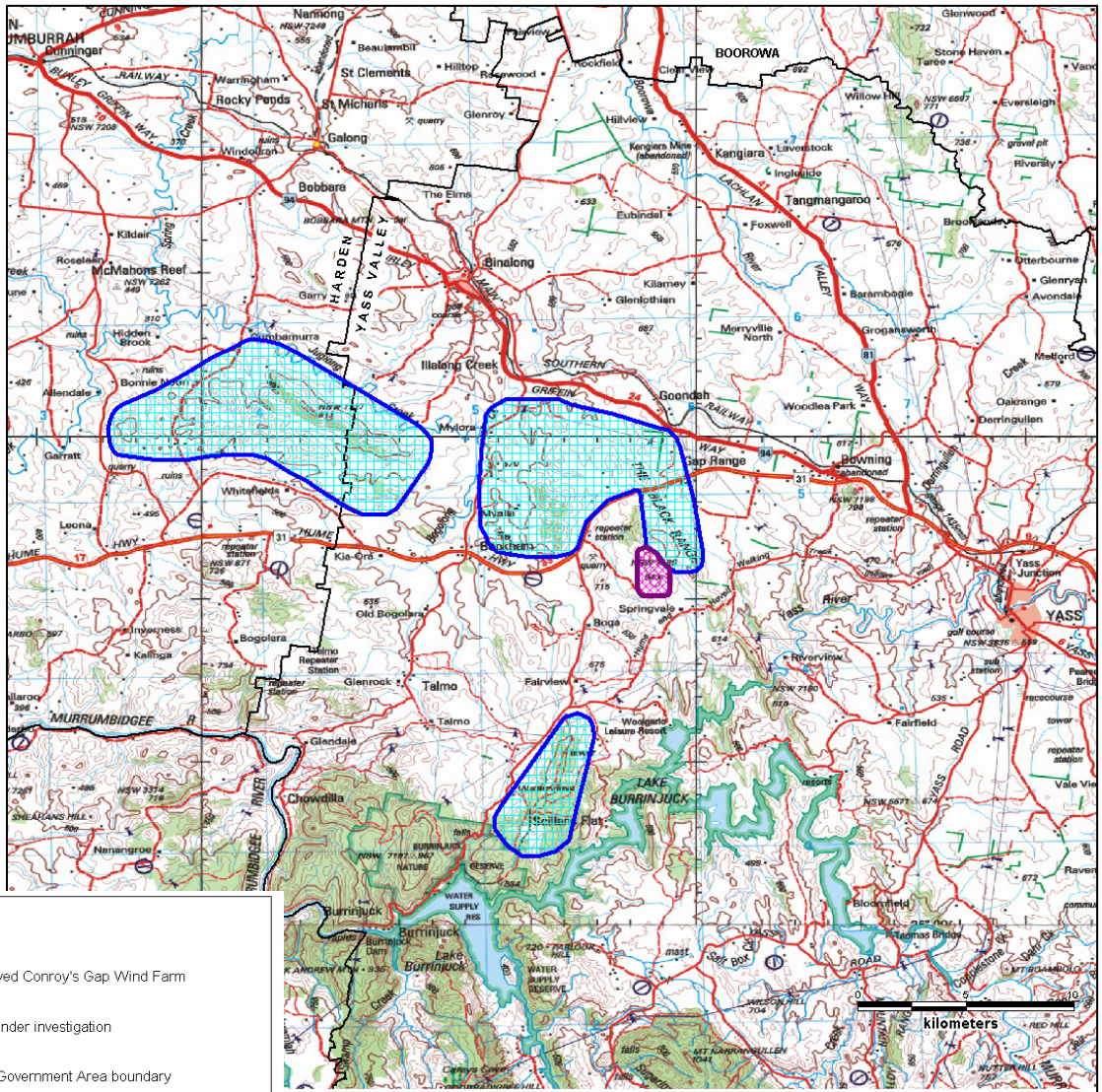
INTRODUCTION

EPURON has commenced investigations into the potential for three wind farms to the west of Yass. This newsletter presents the areas under study and outlines the opportunities for community participation in relation to the work.

EPURON invites local residents and other interested parties to an Open House / Information Day (details are over the page). This provides an opportunity to discuss the project in more detail and for the community to provide feedback.

YASS WIND FARMS PROPOSAL

The study areas are west of Yass, as indicated in the map to the right.



WHAT IS BEING PROPOSED

EPURON has recently started work to determine the potential for 3 wind farms to be located in the region west of Yass region, as indicated in the map. The wind farms are proposed in 3 distinct precincts, generally consisting of exposed hilltops and ridges to the north and south of the Hume Highway. The wind

farms generate electricity that will feed into the NSW grid via the existing 132,000 volt powerlines in the area.

Our activities will include engagement with the local community to exchange information and to understand specific issues in relation to the project area.

Specialist investigations will be made in biodiversity, noise and visual impacts to enable us to understand and mitigate potential impacts of the projects.



EPURON will use this information as well as detailed computer modelling of predicted wind resources in the area to determine the potential number and location of wind turbines in the areas marked on the map above. The wind farm will use the latest technology wind turbines and at this stage a possible total of up to 195 wind turbines is envisaged across the 3 precincts.

POTENTIAL BENEFITS

Generation of new, clean, renewable power is required to meet increased customer demand and to reduce greenhouse gas emissions from carbon based fuels. The Yass area has excellent wind speeds and is well positioned to benefit from wind energy production.

The project will have a number of benefits:

- Clean, renewable energy, with no water used in generation. The project will provide enough renewable electricity for the average consumption of around 200,000 homes over a typical year;
- Reduced pollution and greenhouse gas emissions, leading to a better environment for future generations. The project will reduce greenhouse gas emissions by 1 million tonnes of CO₂ (equiv) over a typical year; and
- Income, employment and investment opportunities for the Yass and Harden regions.

APPROVAL PROCESS

The project will be assessed as a Major Project under Part 3A of the NSW Environmental Planning and Assessment Act. The NSW Minister for Planning is the approval authority. The application for approval will include an Environmental Assessment, which assesses the project against key issues that have been identified by the Director-General of the Department of Planning.

Environmental Assessment

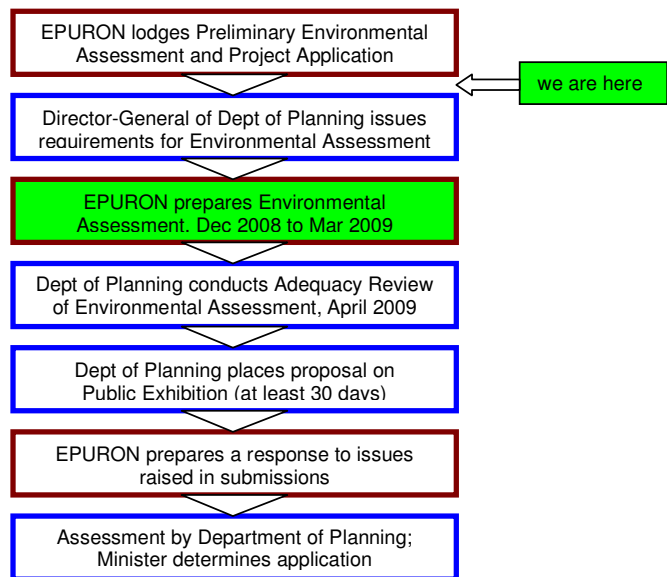
The Environmental Assessment identifies the potential environmental impacts of a proposal and how to mitigate them. Studies will include:

- background noise measurements;
- visual impact assessments;
- flora and fauna assessments including bird and bat studies;
- television and radio interference assessments;
- Aboriginal and other historic heritage; and
- traffic and transport impact assessments.

This will feed into the design process to ensure impacts are considered and the project modified accordingly. These studies are being carried out by independent contractors with input sought from the community.

Indicative timeframe

This chart shows the steps in the process we are following:



HAVING YOUR SAY

Input from the Community

Our aim is to ensure that we identify and, where possible, avoid or mitigate the potential impacts of the wind farm. Before finalising the proposal for submission to the Department of Planning, we wish to ensure that:

- all relevant issues are considered by EPURON in the assessment of the project; and,
- the community is fully informed and your feedback and concerns are considered in the proposal.

An independent phone survey and a recent poll by the Upper Lachlan Shire Council have confirmed strong support for wind farms, but we recognise that opinions in relation to wind farms vary between individuals. The objective of consultation is to determine how to develop the best wind farm possible on this site.

Community Information "Open House"

EPURON is holding an Open House to present the proposal, answer any questions and record community feedback. EPURON staff and consultants will be available to discuss the project and will have photo montages to show what the project is likely to look like.

Date: Wednesday 10th December 2008
 When: 2pm – 7pm, drop in any time
 Where: Royal Tara Motel
 1 Stephen St, Binalong

CONTACT US

Write to us: EPURON Pty Ltd
 Level 11, 75 Miller St
 NORTH SYDNEY NSW 2060

Contact: Julian Kasby
 Project Manager
 Phone: 02 8456 7400
 Fax: 02 9922 6645
 Email: Yass-projects@epuron.com.au