

# **Richmond Valley Solar Farm**

## **Community Information Session**

**Via video, Thursday, 3 March 2022**

**Andrew Wilson, General Manager Development - NSW**  
**Hsin Chern Lim, General Manager - Solar**

**EPURON**

# Acknowledgement of Country

We acknowledge the Bandjalung Peoples as the Traditional Custodians of the land upon which we meet and their continuing connection to lands, waters and communities.

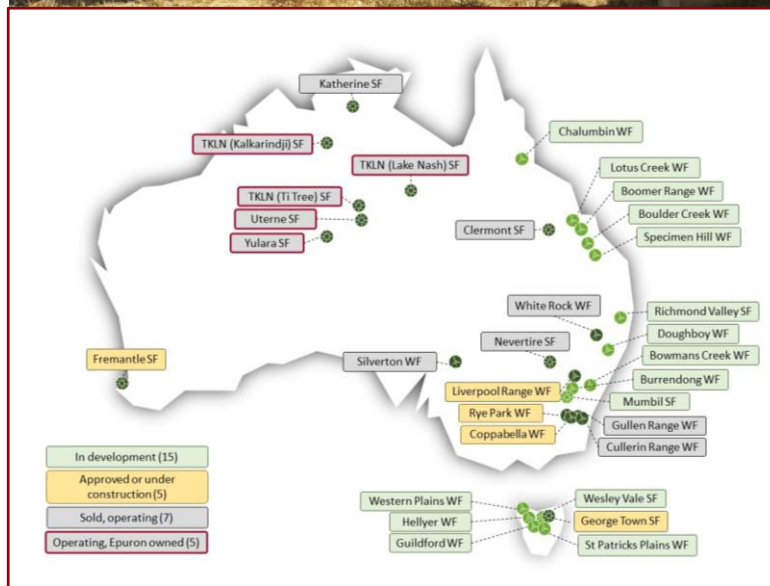
We pay our respects to Elders past, present and emerging.

# Introductions

- Andrew Wilson, General Manager Development – NSW
- Hsin Chern Lim, General Manager - Solar

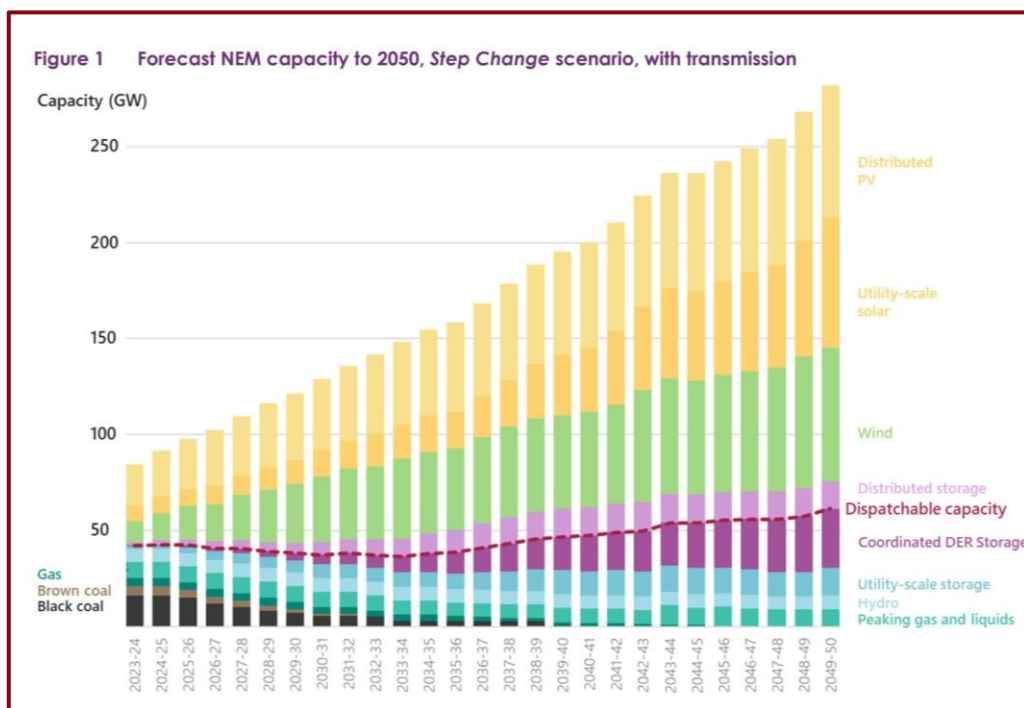
# Epuron

- Developing renewables since 2003; experienced, long-standing.
- **400+** MW of utility-scale solar energy development, including **5** operating solar farms and **6** solar farm projects in development (WA, NSW, Tas. And NT).
- **4000+** MW of utility-scale wind energy development experience including **8** approved wind farms and **12** wind farm projects in development (NSW, Qld. and Tas.)
- Signatory to Clean Energy Council's Best Practice Charter for Renewable Energy Projects.
- Expert team, collaborative and consultative approach.



# Big picture

- Australia's energy market is in transition.
- Coal retiring 2-3 times faster than expected; in NSW all coal power stations due to retire by 2043 = 7-8000 MW.
- NSW a net importer of electricity.
- Draft 2022 ISP = NEM needs 135GW solar, 70GW wind, 45GW storage by 2050 - triple the previous forecasted need and nine-times the variable RE we have now.

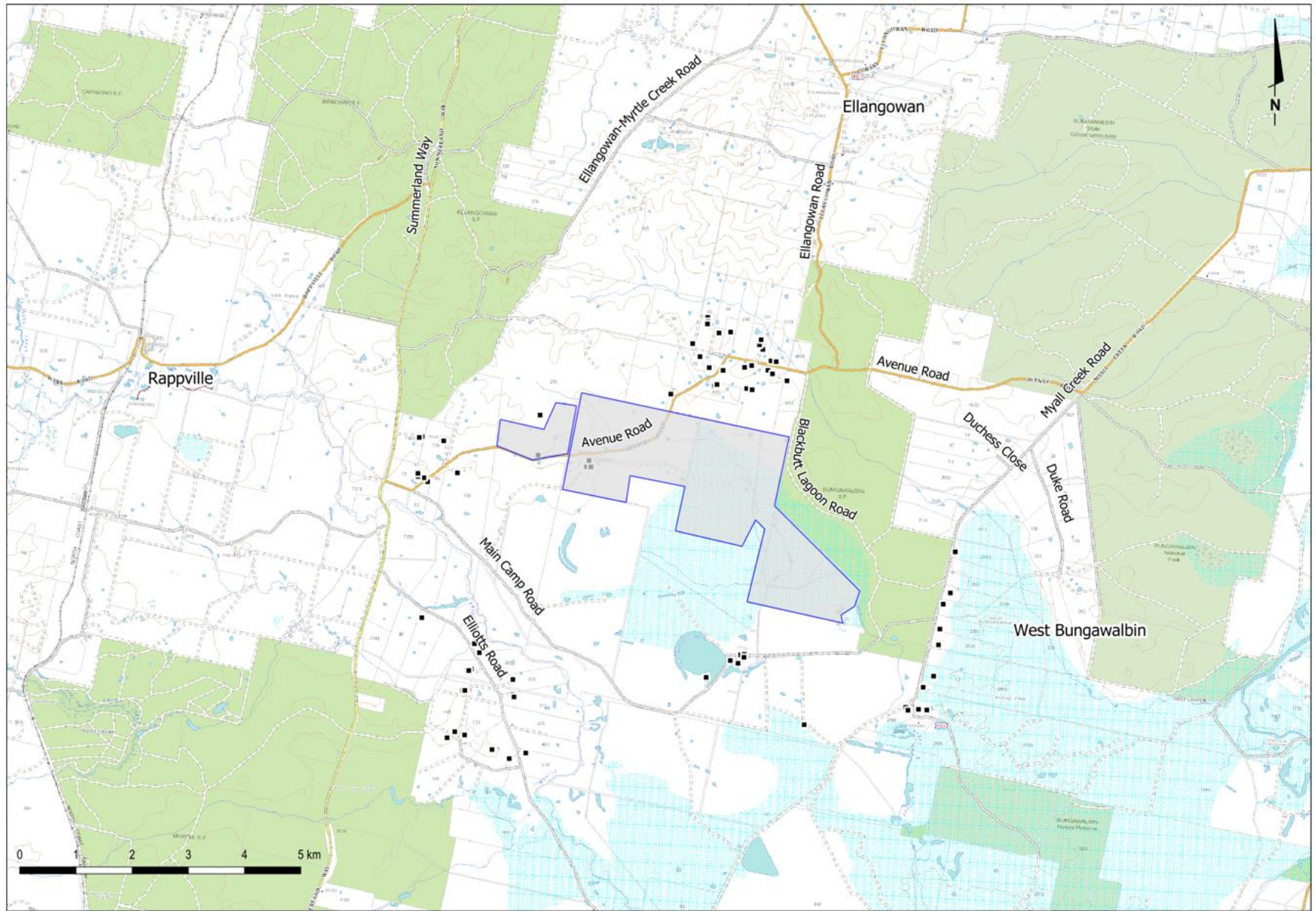


# Richmond Valley Solar Farm

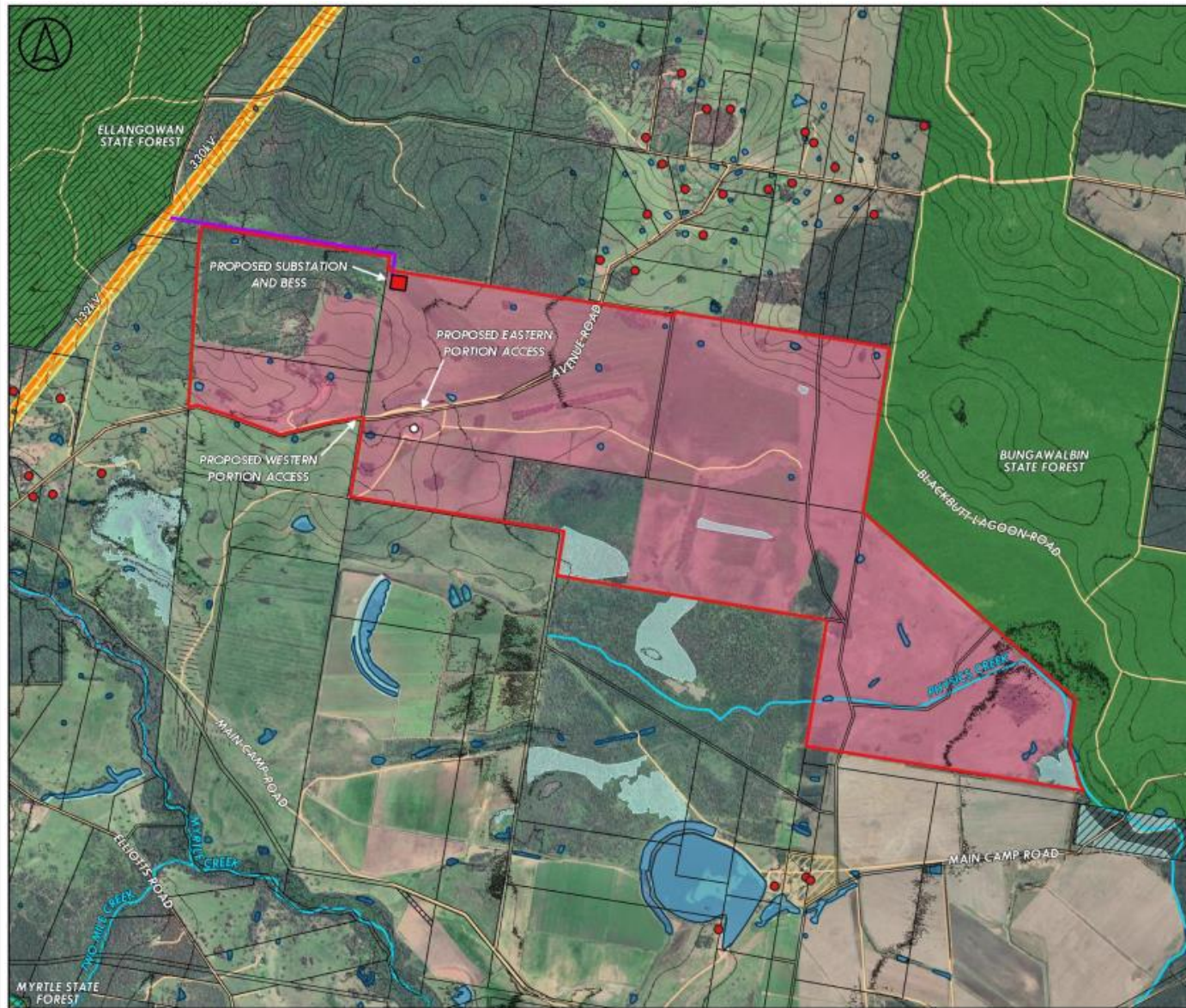
- Located on freehold land currently used for cattle-grazing, accessed from Avenue Road east of Summerland Way.
- Near Myrtle Creek, approx. 10km east of Rappville, 7km south of Ellangowan.
- Proposed 500 MW of solar, with 500 MWh of energy storage.



# Richmond Valley Solar Farm – Proposed Location



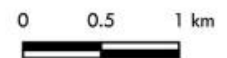
# Richmond Valley Solar Farm – Preliminary Design



**EPURON PROJECTS PTY LTD**  
**Richmond Valley Solar Farm**

## LEGEND

- Development Site
- Solar Investigation Area
- Proposed Substation and BESS
- Proposed Power Line
- Associated Residences
- Non-Associated Residences
- Cadastre
- Crown Land
- Local Heritage Items
- State Forest
- Road
- Watercourse
- Water Body
- Wetlands
- Overhead Transmission Line**
- 132kV
- 330kV
- Easement
- Contours (5m Interval)



Source: © State Government of NSW, Department of Customer Service, Spatial Services 2021  
 © State Government of NSW, Department of Planning Industry and Environment 2021



## Example - Nevertire Solar Farm



## Example – Solar Panels



# Example - Energy Storage



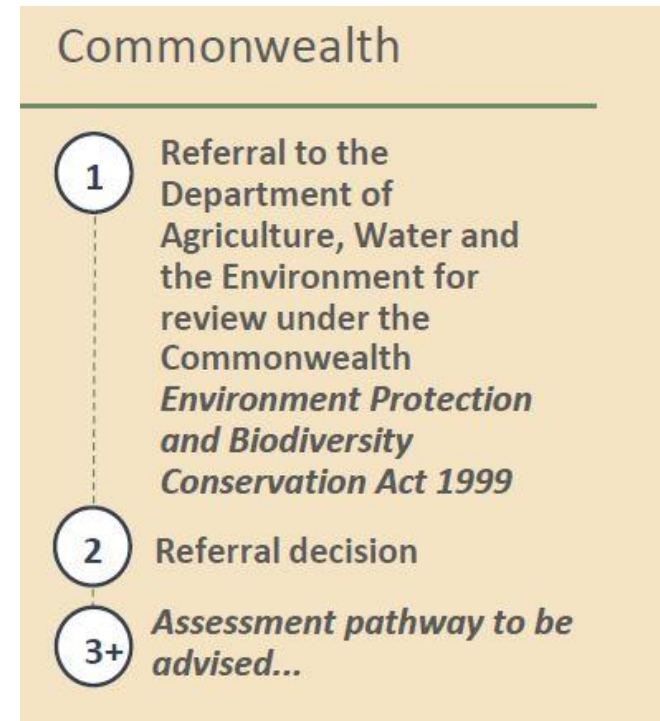
# Assessment process - State

- Managed by NSW Department of Planning and Environment (DPIE). Rigorous and comprehensive.
- Scoping Report and request for SEARs.
- SEARS issued by DPIE.
- Preparation of EIS by proponent - includes assessments and plans ie for landscape and visual, ecology, cultural heritage, construction, traffic and transport, bushfire management.
- EIS reviewed by DPIE.
- EIS on exhibition and public submissions accepted.
- Responses to public submissions provided by proponent.
- Regulatory assessment and determination (DPIE and IPC).



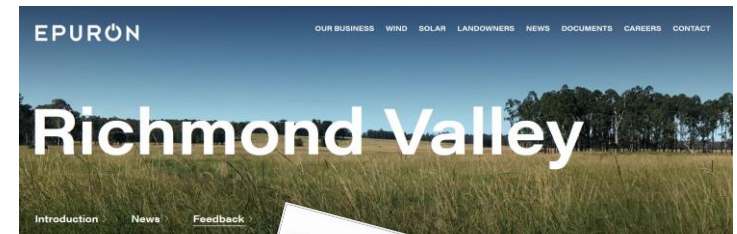
# Assessment process - Commonwealth

- Referral to the Federal Department of Agriculture, Water and the Environment (DAWE) for review under the Commonwealth *Environment Protection and Biodiversity Conservation Act 1999* (EPBC Act).
- Assessment pathway to be determined.



# Engagement and consultation – feasibility and assessment phase.

- Newsletters via mail and email.
- Project website with feedback form: [richmondvalleysolar.com.au](http://richmondvalleysolar.com.au)
- Targeted engagement with nearby residents ~4 km.
- Initial engagements started with the Bandjalang Aboriginal Corporation and the Bogal Local Aboriginal Land Council
- Discussions with Richmond Valley Council.
- Consultation with NSW government departments and agencies.
- Initial community information sessions in March 2022 - first of many.



We value your input



EPURON

# Community benefits

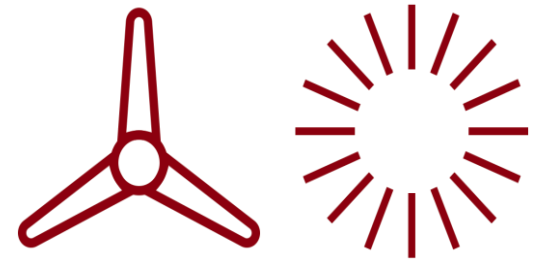
- Up to 200 jobs and economic boost for local trades and businesses during construction.
- Approx. 4 ongoing permanent jobs for operations and maintenance and <50 contract roles for various works such as vegetation management and equipment inspection.
- New renewable energy developments typically involve a community benefit scheme to share benefits with the wider community. This will be developed in due course and Epuron is open to ideas for this from community members. Suggestions are welcome.

# Timeline

- Scoping Report submission – target March 2022
- SEARs – Q2 2022
- EPBC referral – Q2 2022
- EIS lodged & public exhibition – Q3 2022
- Project approvals – Q1 2023
- Construction commencement – 2023



# Questions



EPURON



# Thank you

 [richmondvalleysolar.com.au](http://richmondvalleysolar.com.au)

 [info@richmondvalleysolar.com.au](mailto:info@richmondvalleysolar.com.au)

Level 11, 75 Miller St, North Sydney NSW 2060 AUSTRALIA | [epuron.com.au](http://epuron.com.au) | [@EpuronAust](https://www.instagram.com/EpuronAust)

**EPURON**