

# St Patricks Plains Wind Farm

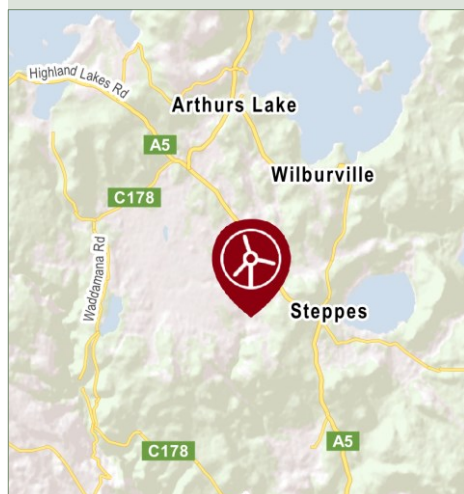
Project Update

March 2022



Photomontage from Highland Lakes Road near Steppes Hall

## Location



The site proposed for St Patricks Plains Wind Farm, about 10 km south-east of Miena and 30 km north of Bothwell, is located within Tasmania's Midlands Renewable Energy Zone (REZ).

The Midlands REZ is one of three zones in Tasmania identified by the Australian Energy Market Operator as optimal for new projects to support Tasmania's renewable energy growth and meet the state's world-leading renewable energy target.

The site has strong, consistent winds, is made up of large private landholdings and includes a powerline with available capacity, making it ideally located for wind energy generation.

## Thank you

Thank you to everyone who attended the noise assessment briefings and information session held at Steppes Hall in the Central Highlands on 18 and 19 February. More than 80 local residents and property owners from areas around the project site, as well as some other interested community members attended over four sessions.

Each session featured a presentation by a specialist from Marshall Day Acoustics on the noise modelling and assessment process, and the methods used and predictive noise modelling results for the project.

Epuron held multiple smaller sessions to manage COVID protocols and in response to requests from community members for quieter, smaller information sessions with more equitable opportunity to ask questions, provide feedback and engage in meaningful discussion. The project team believes the approach of multiple, smaller sessions provides a better forum to facilitate this.

The presentation and information material shared at the sessions are now available on the project website and can be found under the 'News' tab.

## Noise limits and predictions

At the sessions it was explained that the noise assessment requirements and noise limits for the wind farm are outlined in the Project Specific Guidelines issued for St Patricks Plains Wind Farm by the Environment Protection Authority Tasmania (EPA).

The results of the predictive noise modelling showed that the project would be well within, and therefore compliant with, the prescribed noise limit of 40 dB at non-involved receiver locations. This noise limit was queried by an attendee who noted that it may have changed from 40 dB to 35 dB based on an EPA Board meeting communique from August 2020.

Epuron is in contact with the EPA to clarify the noise limit for the St Patricks Plains Wind Farm and will advise the community if there is any change. Importantly, the project easily complies with the prescribed noise limit of 40 dB for all residences at Penstock, Shannon Wilburville and Flintstone, and along Arthurs Lake Road, and would also comply with a 35 dB limit should that be required.

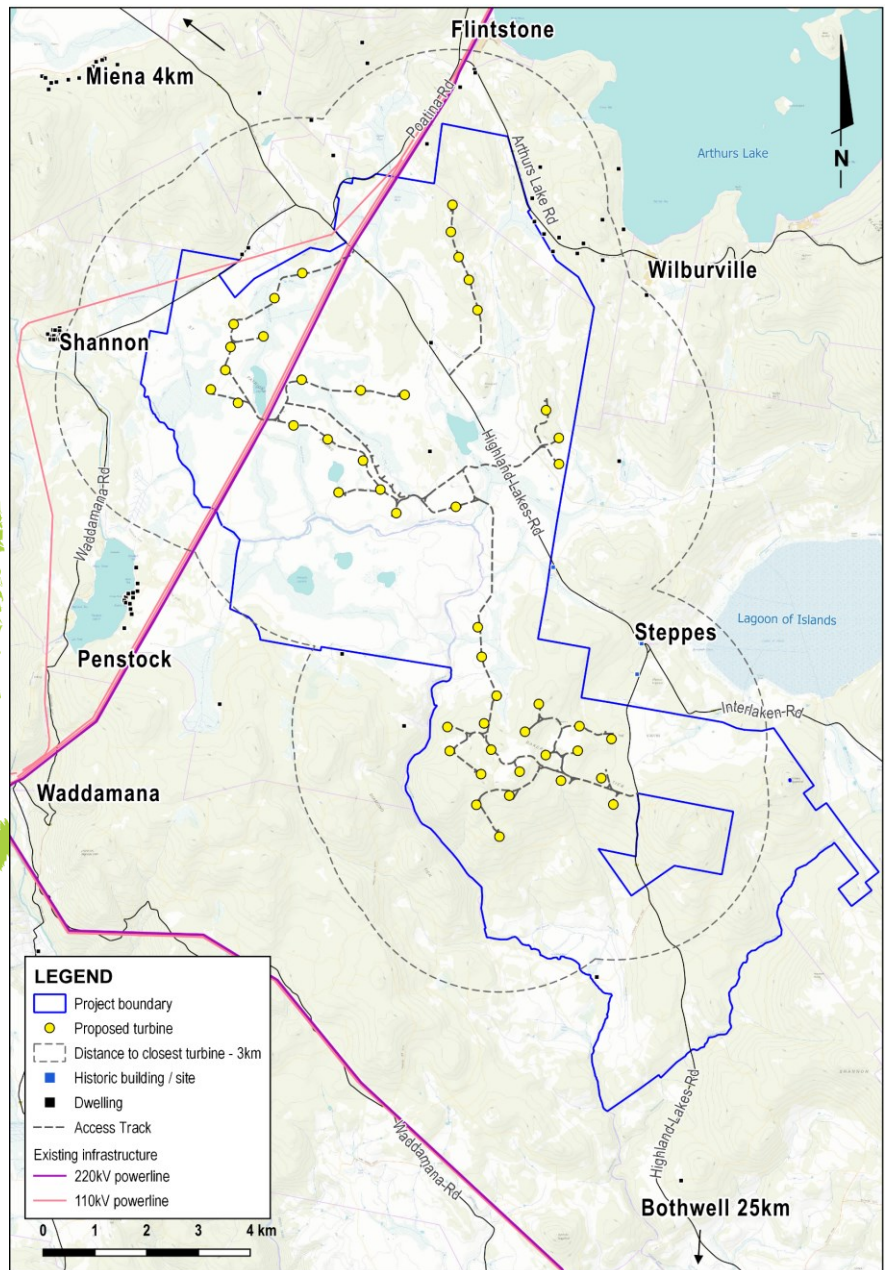
Meanwhile the project team continues to finalise the development application and Environmental Impact Statement in preparation for lodgement.

## Planning and assessment

- 1 Site selection and preliminary investigations
- 2 Referral to the Australian Department of Agriculture, Water and Environment (DAWE) for review under the Commonwealth *Environment Protection and Biodiversity Conservation Act* (EPBC Act 1999)
- 3 EPBC Act decision: controlled action, assessment under bilateral agreement (Referral no. 2019/8497)
- 4 Notice of Intent (NOI) lodged with the Environment Protection Authority (EPA) Tasmania
- 5 Project Specific Guidelines for the Environmental Impact Statement (EIS) issued by the EPA
- 6 Studies, assessments, finalising site design

**WE ARE HERE** Site design completed, finalising EIS

- 8 Development application (DA) and EIS submitted to Central Highlands Council
- 9 DA and EIS referred by Council to the EPA
- 10 Preliminary assessment by Council and the EPA
- 11 DA and EIS on exhibition for public submissions
- 12 Responses to public submissions and requests for additional information from stakeholders (if required)
- 13 Assessment by the EPA Board
- 14 Determination by the EPA Board, approval conditions provided to Council and DAWE
- 15 Determination by DAWE
- 16 Assessment by Council
- 17 Determination by Council



*St Patricks Plains Wind Farm: the proposed layout involves 47 wind turbines.*

## Epuron and Ark Energy

In other news, Epuron has signed a sale agreement with Ark Energy Corporation Pty Ltd, an Australian subsidiary of Korea Zinc Co. Ltd. A number of steps must be completed before the sale is finalised and plans for the St Patricks Plains Wind Farm will not be affected by the change in ownership. More information on Ark Energy is available at [arkenergy.com.au](http://arkenergy.com.au).

### More information

Questions and comments are welcome at any time and can be sent to the project team via the details below or the feedback form on the website.

Website [stpatricksplainswindfarm.com.au](http://stpatricksplainswindfarm.com.au) or scan QR code below

Email: [info@stpatricksplainswindfarm.com.au](mailto:info@stpatricksplainswindfarm.com.au), Tel: 1800 731 296

Email updates: [epuron.com.au/mailling-list-details/](http://epuron.com.au/mailling-list-details/)

Contacts: Donna Bolton, General Manager Development - Tasmania  
Sandra Weinhold, Project Manager  
Kerry Smith, Consultant

