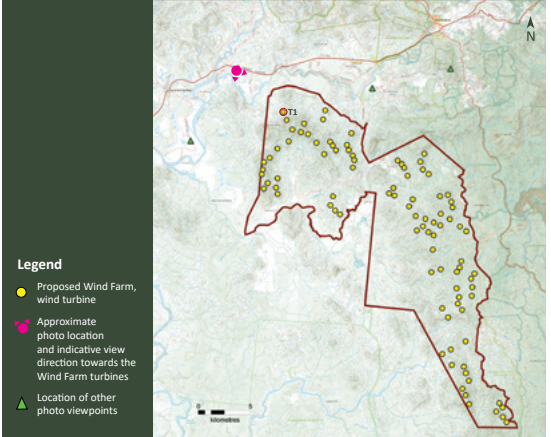


Chalumbin Wind Farm – 94 Wind Turbine Site Layout

Photomontage 65° view from 15225 Kennedy HWY: Approximate distance to closest wind turbine is 6,010 metres (turbine 1)



Aerial Map - viewpoint location



Site Map - viewpoint location



Existing Panorama View: 15225 Kennedy HWY

General Notes:

Bearing to closest turbine: 134.2° (T1)
 Distance to closest turbine (m): 6,010m
 Elevation: 671m
 Photo Coordinates: E:320120 N:8048002
 Projection: MGA Zone T55 (GDA 94)

Photo taken at: 4:59 PM on the 2nd of June 2021
 Camera: Canon EOS 6D Mark II + Sigma 50mm 1.4
 Original Format: A1 Landscape
 Turbine dimensions: 250m tip height, 160m hub height
 Closest visible turbine is indicated by red line

* A photomontage provides a representation of the wind farm's visibility from a specific view point. Photomontages are produced by combining photographs and digital wireframes of the wind turbine layout. Wireframes are generated using specialist industry software and based on the proposed wind turbine size and distances from the view point to provide an accurate scale. To note a static image cannot convey wind turbine blade movement or the view under different lighting, weather and seasonal conditions.