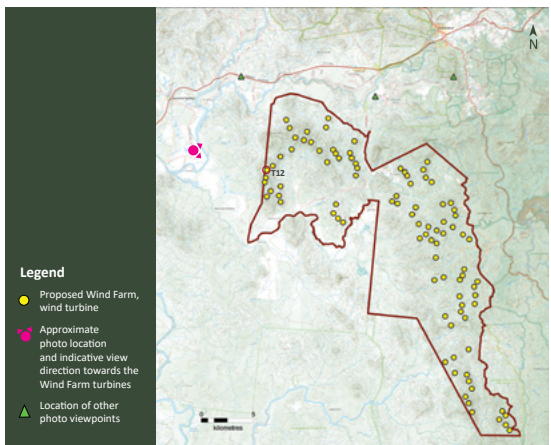


Chalumbin Wind Farm – 94 Wind Turbine Site Layout

Photomontage 63° view from Herbert River Rd, Innot Hot Springs: Approximate distance to closest wind turbine is 7,330 metres (turbine 12)



Legend
 ● Proposed Wind Farm, wind turbine
 ▲ Approximate photo location and indicative view direction towards the Wind Farm turbines
 ▲ Location of other photo viewpoints



Existing Panorama View: Herbert River Rd, Innot Hot Springs QLD

General Notes:
 Bearing to closest turbine: 106.4° (T12)
 Distance to closest turbine (m): 7,330m
 Elevation: 630m
 Photo Coordinates: E:315544 N:8041029
 Projection: MGA Zone T55 (GDA 94)

Photo taken at: 11:05 AM on the 1st of June 2021
 Camera: Canon EOS 6D Mark II + Sigma 50mm 1.4
 Original Format: A1 Landscape
 Turbine dimensions: 250m tip height, 160m hub height
 Closest visible turbine is indicated by red line

Aerial Map - viewpoint location

Site Map - viewpoint location

* A photomontage provides a representation of the wind farm's visibility from a specific view point. Photomontages are produced by combining photographs and digital wireframes of the wind turbine layout. Wireframes are generated using specialist industry software and based on the proposed wind turbine size and distances from the view point to provide an accurate scale. To note a static image cannot convey wind turbine blade movement or the view under different lighting, weather and seasonal conditions.