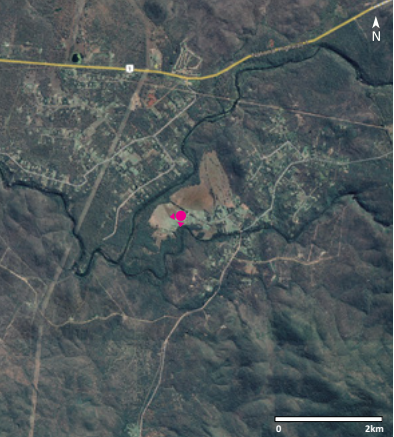
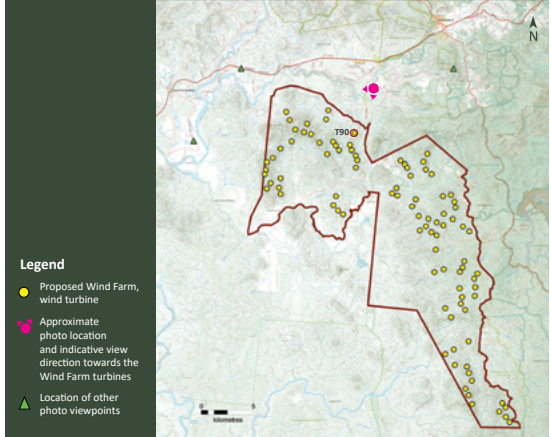


Chalumbin Wind Farm – 94 Wind Turbine Site Layout

Photomontage 64° view from Gordon Earl Drive, Millstream: Approximate distance to closest wind turbine is 4,740 metres (turbine 90)



Aerial Map - viewpoint location



Site Map - viewpoint location

- Legend**
- Proposed Wind Farm, wind turbine
 - Approximate photo location and indicative view direction towards the Wind Farm turbines
 - ▲ Location of other photo viewpoints



Existing Panorama View: Gordon Earl Drive, Millstream QLD

General Notes:

Bearing to closest turbine: 205.6° (T90)
Distance to closest turbine (m): 4,740m
Elevation: 750m
Photo Coordinates: E: 333049 N: 8046093
Projection: MGA Zone T55 (GDA 94)

Photo taken at: 1:37 PM on the 1st of June 2021
Camera: Canon EOS 6D Mark II + Sigma 50mm 1.4
Original Format: A1 Landscape
Turbine dimensions: 250m tip height, 160m hub height
Closest visible turbine is indicated by red line

* A photomontage provides a representation of the wind farm’s visibility from a specific view point. Photomontages are produced by combining photographs and digital wireframes of the wind turbine layout. Wireframes are generated using specialist industry software and based on the proposed wind turbine size and distances from the view point to provide an accurate scale. To note a static image cannot convey wind turbine blade movement or the view under different lighting, weather and seasonal conditions.