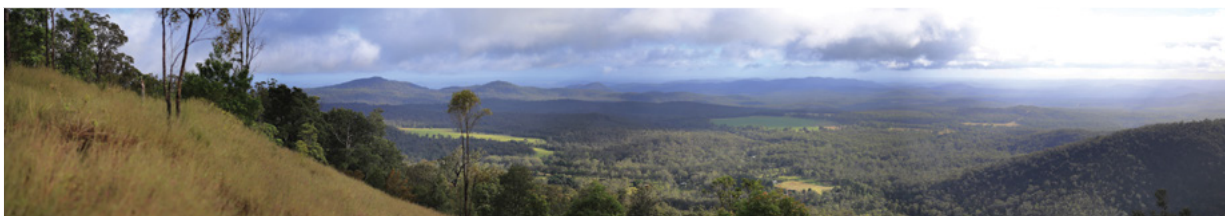
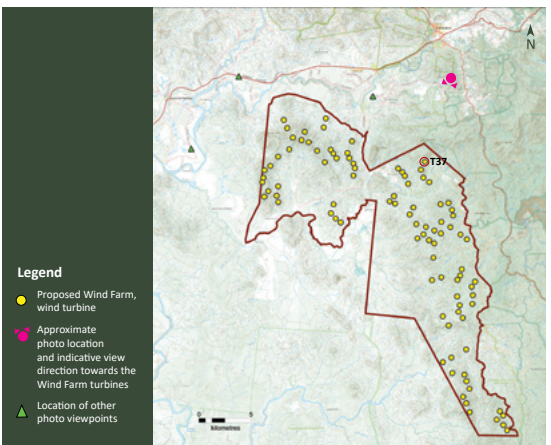
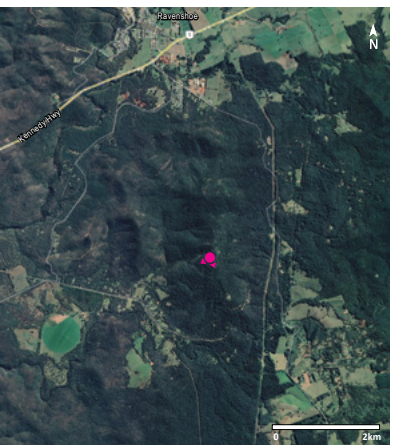


# Chalumbin Wind Farm – 94 Wind Turbine Site Layout

Photomontage 82° view from Bally Knob Lookout: Approximate distance to closest wind turbine is 8,560 metres (turbine 37)



Existing Panorama View: Bally Knob Lookout

**General Notes:**

**Bearing to closest turbine:** 197.5° (T37)  
**Distance to closest turbine (m):** 8,560m  
**Elevation:** 1154m  
**Photo Coordinates:** E:340582 N: 8047978  
**Projection:** MGA Zone T55 (GDA 94)

**Photo taken at:** 4:06 PM on the 1<sup>st</sup> of June 2021  
**Camera:** Canon EOS 6D Mark II + Sigma 50mm 1.4  
**Original Format:** A1 Landscape  
**Turbine dimensions:** 250m tip height, 160m hub height  
**Closest visible turbine is indicated by red line**

Aerial Map - viewpoint location

Site Map - viewpoint location

\* A photomontage provides a representation of the wind farm’s visibility from a specific view point. Photomontages are produced by combining photographs and digital wireframes of the wind turbine layout. Wireframes are generated using specialist industry software and based on the proposed wind turbine size and distances from the view point to provide an accurate scale. To note a static image cannot convey wind turbine blade movement or the view under different lighting, weather and seasonal conditions.