

Lotus Creek Wind Farm

Project Update

February 2022



Location



The Lotus Creek Wind Farm site is between Mackay and Rockhampton and approximately 20 km west of St Lawrence in central Queensland.

It is in the Central Queensland Renewable Energy Zone, an area identified by the Australian Energy Market Operator as optimal for new projects to support the state's renewable energy growth and clean energy transition.

- 55 wind turbines connected to existing powerlines.
- Capacity of approximately 341 megawatts.
- Up to 300 jobs during the construction period and 10 ongoing jobs for operation.

Community Information Sessions St Lawrence & Clarke Creek in March

Information sessions for the Lotus Creek Wind Farm will be held in St Lawrence and Clarke Creek next month to give interested members of the community an opportunity to learn more about the proposal and discuss it with the project team.

The sessions will be open for two hours with a drop-in format and include a short presentation halfway through.

St Lawrence

4-6pm, presentation at 5pm
Wednesday 9 March
Broadsound Centenary Hall
7 Railway Parade

Clarke Creek

4-6pm, presentation at 5pm
Thursday 10 March
Clarke Creek Community Centre
May Downs Road

Please register. Everyone is welcome. To assist with catering and COVID requirements please register noting which session you would like to attend by Monday 7 March. To register please email info@lotuscreekwindfarm.com.au or call 1300 208 865.

Please note any prescribed COVID protocols will apply and attendees may be required to sign in and scan QR code upon entry.

The project team looks forward to meeting community members, answering questions and the opportunity to address any concerns.

Questions and comments

We welcome questions and feedback from members of the community at any time and where practicable aim to incorporate community input into the project to improve outcomes and benefits.

Questions and comments can be sent to the project team via email to info@lotuscreekwindfarm.com.au or the online feedback form available on the website lotuscreekwindfarm.com.au.

Planning and assessment

The proposal will be assessed by both the Queensland Government and the Australian Department of Agriculture, Water and the Environment.

Queensland Government

- 1 Site selection, initial concept and preliminary investigations
- 2 Pre-lodgement meeting with State Assessment and Referral Agency (SARA)
- 3 Studies and assessments (prescribed by SARA State code 23)
- 4 Application and assessments submitted to SARA

WE ARE HERE Assessment

- 6 Determination

Commonwealth

- 1 Referral to the Australian Department of Agriculture, Water and the Environment for review under the Commonwealth *Environment Protection and Biodiversity Conservation Act 1999* (EPBC Act)

- 2 Decision: controlled action (Referral 2020/8867), assessment by preliminary documentation

- 3 Request for further information (RFI)

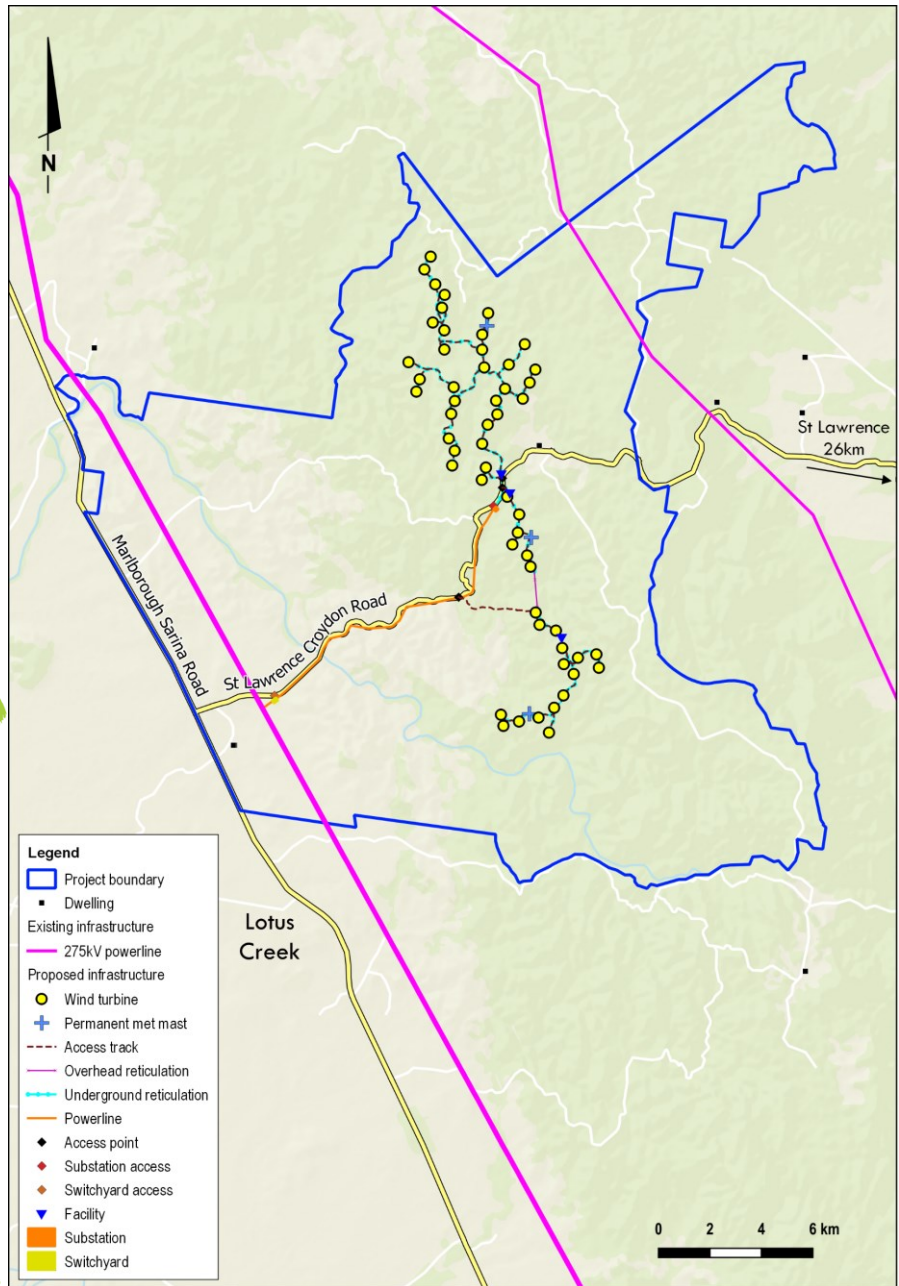
WE ARE HERE Response to RFI submitted

- 5 Response accepted and put on public exhibition

- 6 *If required:* information revised

- 7 Determination

Lotus Creek Wind Farm proposed layout



The proposal involves 55 wind turbines connected to existing powerlines.

Update on planning and assessment

The development application and accompanying assessment reports were lodged with the Queensland Government in December 2021.

The Australian Department of Agriculture, Water and the Environment (DAWE) will also assess the proposal under the Commonwealth *Environment Protection and Biodiversity Conservation Act 1999*. Epuron has submitted a response to a request for further information from DAWE. After it has been accepted it will be placed on public exhibition.

More information

lotuscreekwindfarm.com.au or scan QR code

Email updates: epuron.com.au/mailling-list-details

Project contact: Jessica Picton, Project Manager

Email: info@lotuscreekwindfarm.com.au

