

Richmond Valley Solar Farm

Project Update

February 2022



Location



The site proposed for Richmond Valley Solar Farm is north-east of Myrtle Creek, approximately 10km east of Rappville and 16 km south-east of Casino, in northern New South Wales.

It has an excellent solar resource and is currently used for cattle grazing, a complementary land use to solar farming. The site is also close to the transmission network, making it an excellent location for utility-scale solar energy generation.

It is estimated that the project would create up to 200 jobs during the construction period and generate up to 500 megawatts of clean energy.

Information Sessions Thursday, 3 March 2022

Online information sessions for the Richmond Valley Solar Farm, proposed for a site north-east of Myrtle Creek in northern New South Wales, will be held in March.

The sessions will give members of the nearby community and other interested parties an opportunity to learn more about the proposal from the project team. The project team is also looking forward to hearing from community members about their views on the proposal.

Two sessions have been scheduled, one in the morning and one in the evening. Each session will run for about an hour and include a presentation followed by time for questions.

The presentation will include an overview of the Richmond Valley Solar Farm project, the key steps in the planning and assessment process and opportunities for members of the community to participate.

Time: 10am or 6pm

Date: Thursday, 3 March 2022

Location: Online



To register go to trybooking.com/BWXQM or scan the QR code right

The sessions will be conducted via Zoom and registered attendees will be emailed the link to join. The project team looks forward to meeting community members and the opportunity to share more information about this exciting project and answer questions.

Questions and comments

We welcome questions and feedback from members of the community at any time and where practicable aim to incorporate community input into project design to improve outcomes and benefits.

Questions and comments can be sent to the project team via email to info@richmondvalleysolar.com.au or the online feedback form available on the website richmondvalleysolar.com.au

Planning and assessment

Utility-scale solar farms in NSW are considered State significant development and subject to rigorous assessment by the Department of Planning, Industry and Environment. Epuron will also refer the proposal to the Australian Department of Agriculture, Water and the Environment for review under the Commonwealth *Environment Protection and Biodiversity Conservation Act 1999*.

NSW Government

1 Site selection

WE
ARE
HERE

Initial concept and consultation

3 Scoping Report submitted to the Department of Planning, Industry and Environment

4 Secretary's Environmental Assessment Requirements (SEARs) issued for the Environmental Impact Statement (EIS)

5 Studies, assessments, finalising site design

6 Development application (DA) and EIS lodged

7 EIS on exhibition for public submissions

8 Responses to public submissions

9 Assessment

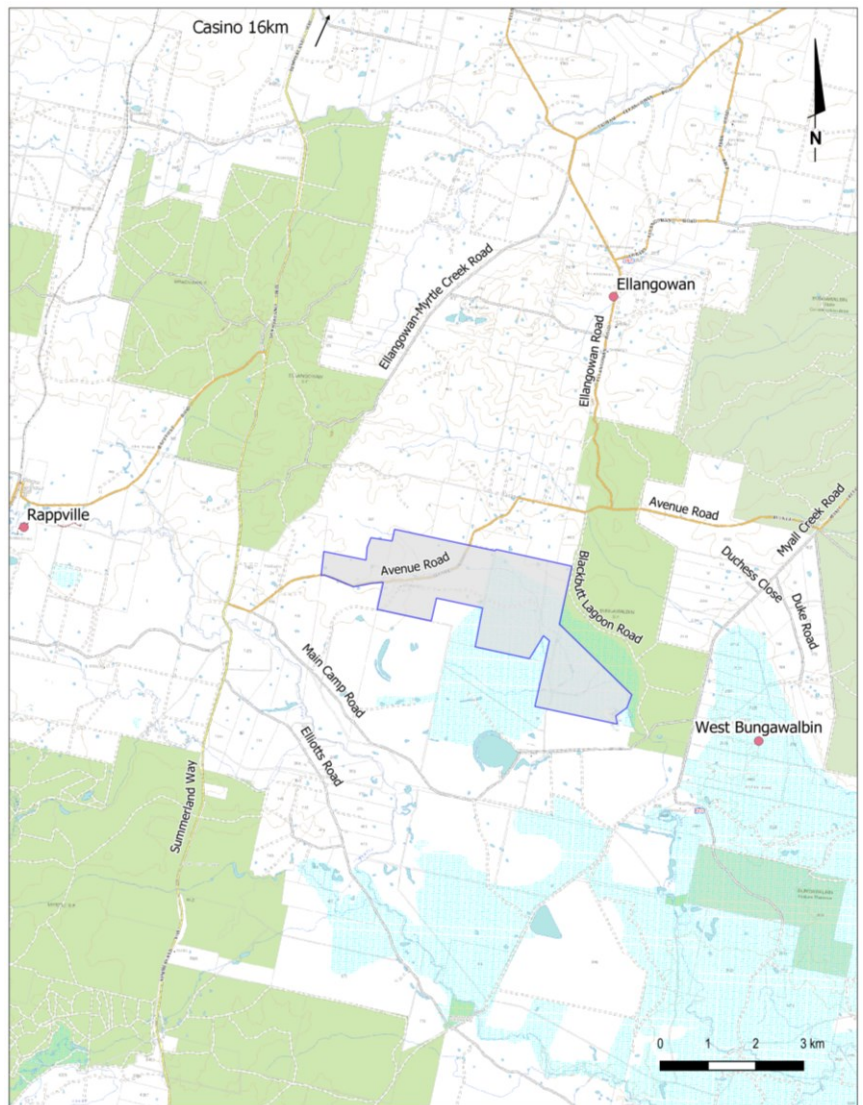
10 Determination

Commonwealth

1 Referral to the Department of Agriculture, Water and the Environment for review under the Commonwealth *Environment Protection and Biodiversity Conservation Act 1999*

2 Referral decision

3+ *Assessment pathway to be advised...*



The shaded area outlined in blue in the map above shows the proposed project area. The project would involve up to 1,000 hectares of privately owned cattle grazing land located off Avenue Road, approximately 10 km east of Rappville and 7 km south of Ellangowan.

Project updates

The project team is keen to keep members of the local community and other interested parties up to date on project developments and opportunities to provide feedback.

Regular newsletters will be issued and can be received by email or post. For email updates please register at epuron.com.au/mailling-list-details.

To receive updates via post please email your address and a request to be added to the mail list to info@richmondvalleysolar.com.au. We respect your privacy and your details will only be used for this purpose.

More information

Website richmondvalleysolar.com.au or scan the QR code

Email updates: epuron.com.au/mailling-list-details

Project contact: Hsin Lim, General Manager Solar

Email: info@richmondvalleysolar.com.au

