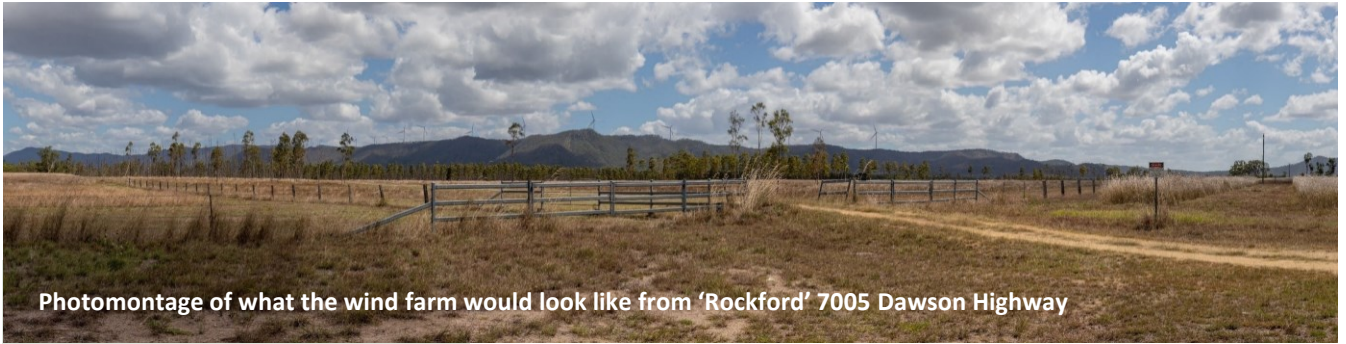


# Specimen Hill Wind Farm

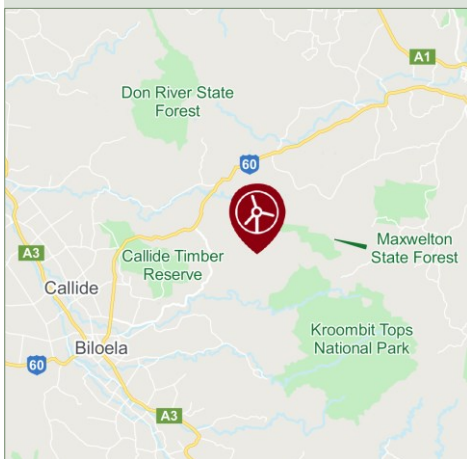
Project Update

February 2022



Photomontage of what the wind farm would look like from 'Rockford' 7005 Dawson Highway

## Location



The Specimen Hill Wind Farm site is approximately 25 km north-east of Biloea and 60 km south-west of Gladstone in central Queensland. It is in the Central Queensland Renewable Energy Zone, an area identified by the Australian Energy Market Operator as optimal for new projects to support the state's renewable energy growth and clean energy transition.

- 56 wind turbines connected to existing powerlines.
- Capacity of approximately 336 megawatts.
- Approximately 250-350 jobs during construction and 15-30 ongoing jobs during operation.

## Project granted planning consent

In December 2021 the Queensland Government granted planning consent for the Specimen Hill Wind Farm.

The consent is for installation of up to 56 wind turbines and associated infrastructure on a site approximately 25 km north-east of Biloea and 60 km south-west of Gladstone in central Queensland.

The project provides a great opportunity for the area to benefit from Australia's clean energy transition and is estimated to require up to 350 jobs during construction as well as provide a significant boost to the local economy.

Epuron is also finalising documentation for the Australian Department of Agriculture, Water and the Environment (DAWE), for the proposal's assessment and approval under the Commonwealth *Environment Protection and Biodiversity Conservation Act 1999*. Once this has been accepted by DAWE it will be placed on public exhibition.

## Community Information Session Biloea - 23 February 2022

An information session will be held this month to give interested members of the community an opportunity to learn more about the final proposal and discuss it with the project team. The session will be open for two hours with a drop-in format and include a short presentation halfway through.

**Date:** Wednesday, 23 February 2022.

**Time:** 4-6pm, presentation at 5pm.

**Location:** ANZAC Memorial Club, 94 Callide Street, Biloea.

**Register:** Everyone is welcome. To assist with catering and COVID requirements please notify attendance by Monday 21 February. To register please email [info@specimenhillwindfarm.com.au](mailto:info@specimenhillwindfarm.com.au) or call 1300 208 865. Please note any prescribed COVID protocols will apply and attendees may be required to sign in and scan QR code upon entry.

The project team looks forward to meeting community members, answering questions and the opportunity to address any concerns.

## Planning and assessment

## Specimen Hill Wind Farm proposed layout

### Queensland Government

- 1 Site selection, initial concept and preliminary investigations
- 2 Pre-lodgement meeting with State Assessment and Referral Agency (SARA)
- 3 Studies and assessments (prescribed by SARA State Code 23)
- 4 Application and assessments submitted to SARA
- 5 Assessment

WE  
ARE  
HERE

Determination: approved

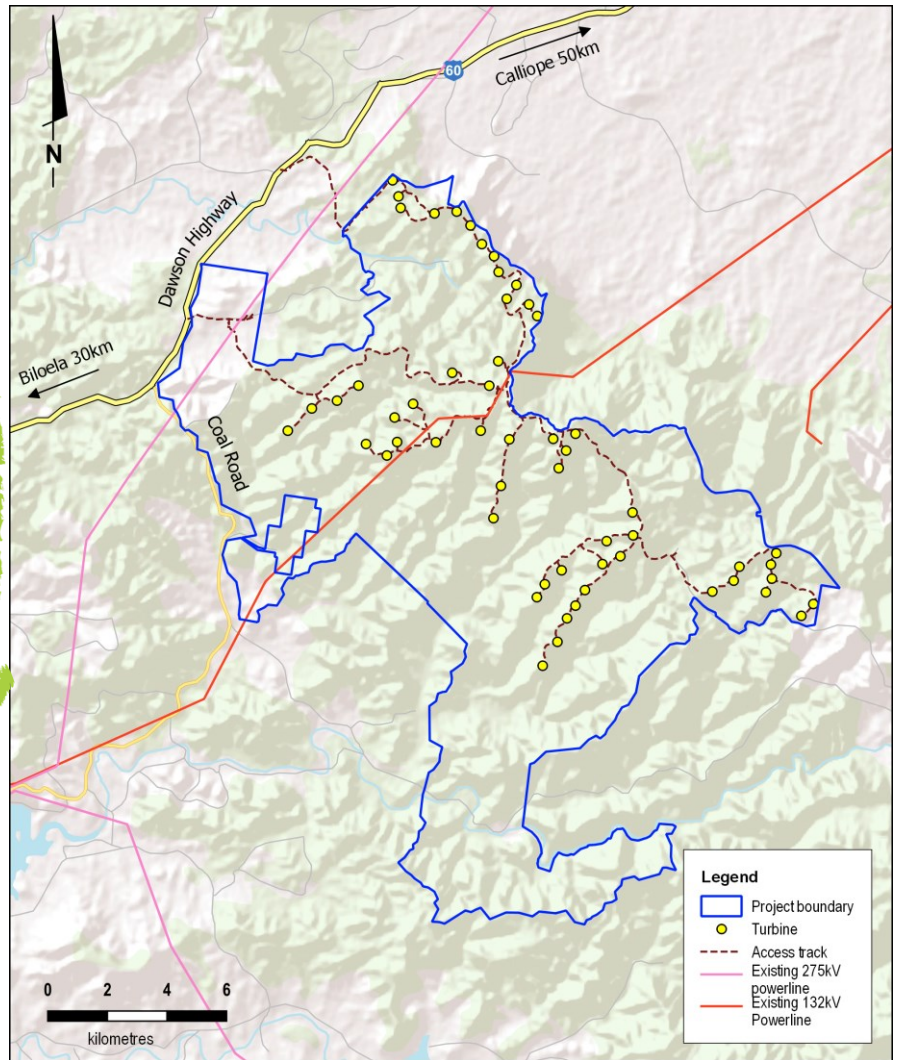
### Commonwealth

- 1 Referral to the Australian Department of Agriculture, Water and the Environment for review under the Commonwealth *Environment Protection and Biodiversity Conservation Act 1999* (EPBC Act)
- 2 Decision: controlled action (Referral 2020/8864)
- 3 Request for information (RFI)
- 4 Prepare response

WE  
ARE  
HERE

Response submitted

- 6 Response accepted and put on public exhibition
- 7 Determination



The proposal involves 56 wind turbines connected to existing powerlines. The site has strong winds, good road transport access via the Dawson Highway, is distant from nearby townships and includes a powerline with available capacity, making it an excellent location for wind energy generation. Growth in Queensland's renewable energy capacity will deliver more affordable, cleaner and reliable electricity to households and businesses. Construction of the project would provide work for Queensland-based contractors and a significant boost to the local economy, particularly for surrounding accommodation, retail, service and hospitality businesses. Contractors and businesses are welcome to email the project team (address below) to register their interest in providing services or facilities.

## Questions and comments

Questions and comments are welcome at any time and can be sent to the project team via email to [info@specimenhillwindfarm.com.au](mailto:info@specimenhillwindfarm.com.au) or the online feedback form available on the website [specimenhillwindfarm.com.au](http://specimenhillwindfarm.com.au).

### More information

[specimenhillwindfarm.com.au](http://specimenhillwindfarm.com.au) or scan the QR code

Email updates: [epuron.com.au/mailling-list-details](http://epuron.com.au/mailling-list-details)

Contact: Anthony Russo, General Manager Development, Qld

Email: [info@specimenhillwindfarm.com.au](mailto:info@specimenhillwindfarm.com.au)

