

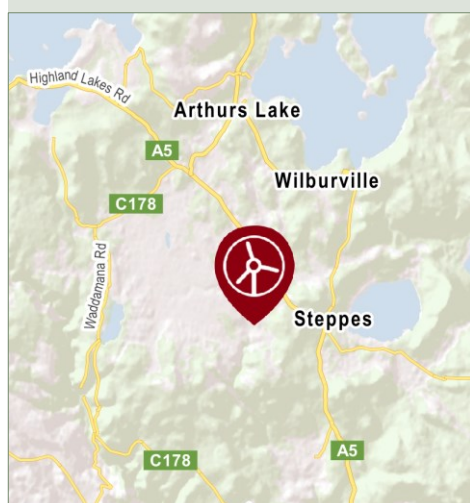
St Patricks Plains Wind Farm

Project Update

January 2022



Location



The site proposed for St Patricks Plains Wind Farm, about 10 south-east of Miena and 30 km north of Bothwell, is located within Tasmania's Midlands Renewable Energy Zone (REZ).

The Midlands REZ is one of three zones in Tasmania identified by the Australian Energy Market Operator as optimal for new projects to support Tasmania's renewable energy growth and meet the state's world-leading renewable energy target.

The site has strong, consistent winds, is made up of large private landholdings and includes a powerline with available capacity, making it ideally located for wind energy generation.

Noise assessment - Briefings and information session

The St Patricks Plains Wind Farm project team is planning to host local noise assessment briefings and a public noise assessment information session in February 2022.

Noise assessment briefings

Small noise assessment briefings are being held for residents and owners of properties located to the east and west of the project site in **Flintstone, Arthurs Lake Road, Wilburville, Shannon and Penstock**.

These briefings will be limited to small groups and applicable Covid protocols will be observed.

If you live in or own property in any of these areas and have not yet registered to attend please contact the project team on info@stpatricksplainswindfarm.com.au.

Attendees will be notified directly of the details for their briefing.

Noise assessment public information session

A public noise assessment information session will be held for all other interested parties and community members:

2pm, Saturday 19 February 2022

Steppes Hall, 5813 Highland Lakes Road, Steppes

Please note places are limited and Covid protocols will apply. If you would like to attend this public information session please notify the project team via email to info@stpatricksplainswindfarm.com.au

All briefings and the information session will be attended by an acoustic specialist from Marshall Day Acoustics, the independent acoustic consultancy that has undertaken the noise assessment work and is preparing the noise assessment report for the St Patricks Plains Wind Farm development application.

Please note: these events are contingent on unrestricted travel from Sydney and Melbourne to Tasmania. In the event of travel or quarantine restrictions they may be rescheduled and registered attendees will be notified directly of new dates.

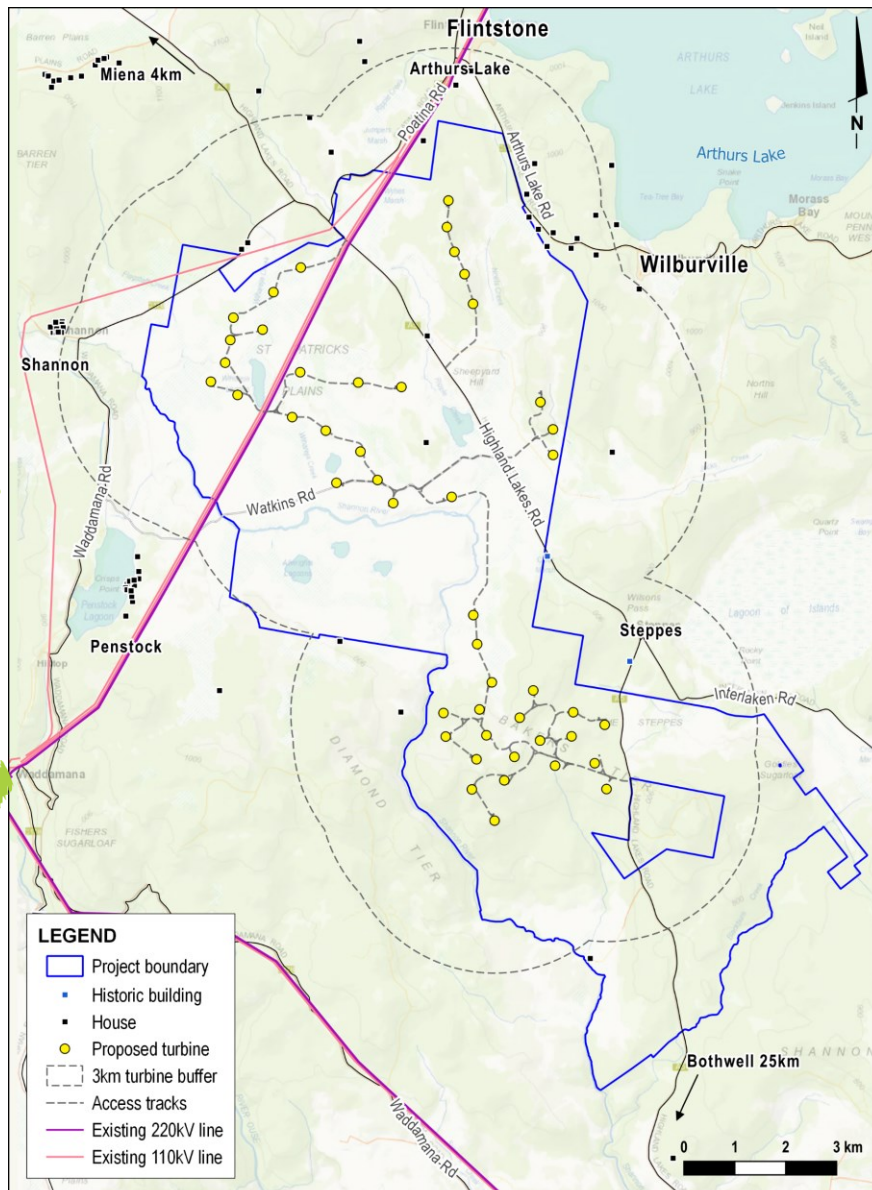
Planning and assessment

- 1 Site selection and preliminary investigations
- 2 Referral to the Australian Department of Agriculture, Water and Environment (DAWE) for review under the Commonwealth *Environment Protection and Biodiversity Conservation Act (EPBC Act 1999)*
- 3 EPBC Act decision: controlled action, assessment under bilateral agreement (Referral no. 2019/8497)
- 4 Notice of Intent (NOI) lodged with the Environment Protection Authority (EPA) Tasmania
- 5 Project Specific Guidelines for the Environmental Impact Statement (EIS) issued by the EPA
- 6 Studies, assessments, finalising site design

WE ARE HERE Site design completed, finalising EIS

- 8 Development application (DA) and EIS submitted to Central Highlands Council
- 9 DA and EIS referred by Council to the EPA
- 10 Preliminary assessment by Council and the EPA
- 11 DA and EIS on exhibition for public submissions
- 12 Responses to public submissions and requests for additional information from stakeholders (if required)
- 13 Assessment by the EPA Board
- 14 Determination by the EPA Board, approval conditions provided to Council and DAWE
- 15 Determination by DAWE
- 16 Assessment by Council
- 17 Determination by Council

St Patricks Plains Wind Farm proposed site layout



The latest layout of the wind farm involves 47 wind turbines

Update on development application

Work on the development application and Environmental Impact Statement (EIS) is continuing. When finalised the EIS will be lodged with Central Highlands Council and the Environment Protection Authority (EPA). After it has been accepted by the EPA it will put on public exhibition. An update will be issued to notify the community of the exhibition dates for the EIS when this is known, along with information on how to make a submission.

The EPA will also assess the proposal under the Commonwealth *Environment Protection and Biodiversity Conservation Act 1999* (EPBC Act), under the bilateral agreement between the Tasmanian and Federal Governments.

More information

Website stpatricksplainswindfarm.com.au or scan QR code
 Email: info@stpatricksplainswindfarm.com.au, Tel: 0459 937 471
 Email updates: epuron.com.au/mailling-list-details/

Project contacts:
 Donna Bolton, General Manager - Tasmania
 Sandra Weinhold, Project Manager
 Kerry Smith, Consultant

