



# RYE PARK WIND FARM

Project Update - December 2009

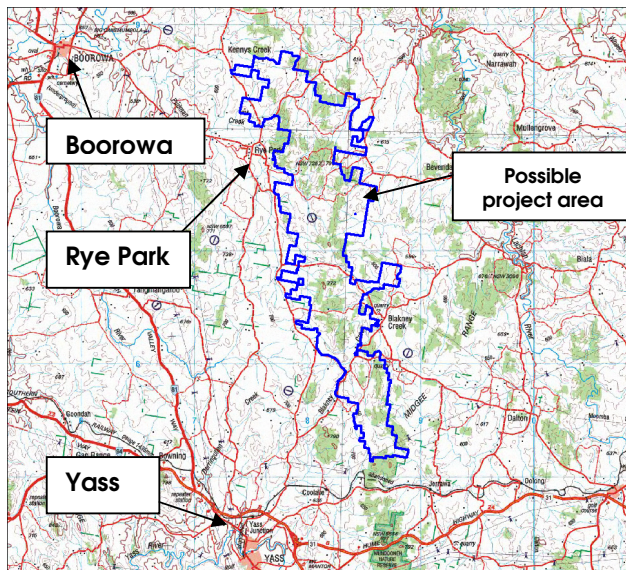
## INTRODUCTION

*Epuron wishes all a Merry Christmas and a Safe & Prosperous New Year.*

**WELCOME** to the Rye Park Wind Farm Project Update. This Wind Farm Project is a new development project being considered by Epuron. The proposed wind farm is at the early stages of planning and geographical perimeters are still being considered.

## PROJECT AREA

The Rye Park area is located in the region around Yass and Goulburn in South Eastern NSW.



Rye Park Proposed Project Area

## WHO IS EPURON?

Epuron is a leading wind energy developer in NSW having achieved planning approval for more than 1500MW of approved wind energy across 5 projects since 2005. Epuron is working on several projects, at various stages of development, totalling in excess of 2000MW, including the large scale Silverton project in western NSW. Epuron projects which have already received planning approval represent over 70% of

approved wind power capacity in NSW. With a team of 17 operating from its North Sydney base, Epuron is currently in an exciting phase of growth and development.

## SITE SELECTION

### Why is this a good area for wind energy?

The area has a number of favourable conditions for the development of a wind farm, including;

- Relatively high wind speeds
- Cleared agricultural land
- Relatively few dwellings
- Access to transmission
- Community support





Epuron would like to thank the many local landholders who have provided & continue to provide their support and commitment to this exciting project.

### WIND STRENGTH

Monitoring of the wind at the site has been occurring now for some time, with Epuron installing monitoring masts and anemometers to better understand the potential wind energy resource. The Rye Park site has 3 masts installed with the first mast installed almost exactly one year ago. This is a milestone for wind data collection as we like to have one year of data to help with the wind modelling.



Wind Monitoring Mast (Solar Powered)

Wind data collected from these masts and sent over the mobile phone network to Epuron's North Sydney office, is used to determine the extent of the energy available from the wind for generation of electricity. Ongoing wind monitoring and time-series data collected from the masts is continuing to be processed and used to calculate the wind characteristics. From this are determined the site's mean wind speeds and direction which in turn will help choose and position the optimal turbine layout.

### SOLAR ENERGY

In other exciting news, Epuron is increasing its explorations of utility-scale solar energy options. The solar team is working on opportunities in NSW & elsewhere in



Australia. This is a new and exciting path for Epuron and we are currently investigating potential sites for Photovoltaic (PV) and Concentrated Solar Power (CSP) development.

### INDUSTRY NEWS

#### Renewable Energy Target (RET)

In August of this year legislation to expand the Renewable Energy Target was passed by Federal Parliament. This means that 20% of Australia's electricity will come from renewable sources by 2020. This will enable wind farms around Australia to competitively price their electricity in order to complete development activities and commence construction.

#### Inquiry into Rural Wind Farms

The Parliament of NSW recently held an Inquiry into the social, environmental and economic costs of rural wind farms. The public were invited to participate and 109 public submissions were received by the Standing Committee. The first of three public hearings was held on 11 September in Sydney at which Epuron Executive Directors Martin Poole and Andrew Durran addressed the Committee. A full transcript can be found on the NSW Parliament site [www.parliament.nsw.gov.au](http://www.parliament.nsw.gov.au)

*Epuron wishes you and your family  
a very Merry Christmas  
and a Happy New Year!!!*

### CONTACT US

Contact: **Laura Dunphy** Project Manager  
Phone: 0420 445 058  
Email: [L.Dunphy@epuron.com.au](mailto:L.Dunphy@epuron.com.au)

**Richard Finlay-Jones**  
Mobile: 0414 555 864



Computer Simulation - Silverton Project