

# Lotus Creek Wind Farm

Project Update

December 2021



## Location



The site for Lotus Creek Wind Farm, approximately 20 km west of St Lawrence and north-west of Rockhampton, is located in the Central Queensland Renewable Energy Zone (QREZ).

The Central QREZ is one of three key zones in Queensland identified by the Australian Energy Market Operator (AEMO) as optimal for new projects to support the state's renewable energy growth and meet its renewable energy target.

The site has strong winds, is close to road transport, has powerlines with capacity and is distant from nearby townships, making it ideally located for wind energy generation.

## Development application lodged

Epuron has submitted its development application and Environmental Impact Statement to the Queensland Government for Lotus Creek Wind Farm. The proposal is for up to 55 wind turbines and associated infrastructure on a site approximately 20 km west of St Lawrence in central Queensland. For a map of the project area and proposed design please see overleaf.

The lodgment follows a significant revision of the project's design to avoid priority habitat for koalas and greater gliders. The redesign also reduced the project area by 40%.

Epuron has also finalised ecological survey work and its response to a request for further information from the Australian Department of Agriculture, Water and Environment (DAWE) for the proposal's assessment under the Commonwealth *Environment Protection and Biodiversity Conservation Act 1999* (EPBC Act). Once this has been accepted by DAWE it will be placed on public exhibition.

The project's EPBC Act referral documentation (Reference number 2020/8867) is available on the EPBC Act Public notices portal: [epbcnotices.environment.gov.au/publicnoticesreferrals/](https://epbcnotices.environment.gov.au/publicnoticesreferrals/)

## Community information session

A local information session will be held early next year to give interested members of the community an opportunity to learn more about the proposal and discuss it with the project team.

To be notified directly when this has been scheduled please register to receive project updates.

Updates are available by email or post. For email updates register at [epuron.com.au/mailling-list-details](https://epuron.com.au/mailling-list-details). To receive updates via post please email your name, postal address and a request to be added to the mailing list to [info@lotuscreekwindfarm.com.au](mailto:info@lotuscreekwindfarm.com.au)

## Working with the site's Traditional Custodians

Epuron recognises the continuing connection that Aboriginal Peoples have to their land and acknowledges that the Lotus Creek Wind Farm project area is Barada Barna People and Barada Kabalbara Yetimarala People country.

Lotus Creek Wind Farm has worked with the site's Traditional Custodians to establish agreements that ensure respect to traditional values and culture are upheld.

An Indigenous Land Use Agreement (ILUA) has been established between the project and the Barada Barna Native Title party. The signing ceremony was held in February 2020.



Barada Barna and the Lotus Creek Wind Farm project team at the signing of their Indigenous Land Use Agreement in February 2020.

An ILUA has also been established between the project and the Barada Kabalbara Yetimarala People. The signing ceremony was held in October 2021.



Barada Kabalbara Yetimarala and the Lotus Creek Wind Farm project team at the signing of their Indigenous Land Use Agreement in October 2021.

Epuron looks forward to positive ongoing working relationships with the site's Traditional Custodians as important stakeholders of the Lotus Creek Wind Farm project.

## Ecology and wildlife

The proposal includes a raft of measures to improve conservation efforts on the project site including monitoring local wildlife and sharing research data, providing funds to support koala conservation and supporting host landowners to improve koala habitat, control predators and maintain best practice fire management.

With its conservation commitments the project can achieve a net positive outcome for biodiversity in the site over the longer term, including an increase in the size and quality of koala habitat and a reduction in bushfire risk.

## Project benefits

**JOBS** - Lotus Creek Wind Farm is expected to create up to 300 jobs during the 24 month construction period and about 10 ongoing jobs for maintenance and operation.

**ECONOMIC BOOST** - Construction would provide work for Queensland-based contractors and a significant boost to the local economy, especially for surrounding accommodation, retail, service and hospitality businesses. Construction is expected to commence in late 2022. Contractors and businesses can email the project team (see below) to register interest in providing services or facilities.

**CLEAN ENERGY** - Growth in Queensland's renewable energy capacity will continue to put downward pressure on wholesale electricity prices and deliver affordable, clean, reliable electricity to households and businesses. Lotus Creek Wind Farm would contribute up to approximately 341 megawatts of clean electricity to the Queensland grid.

## Register for updates

We are keen to keep people up to date on project developments and opportunities to provide feedback.

To receive project updates via email register at [epuron.com.au/mailling-list-details](https://epuron.com.au/mailling-list-details) or to receive updates via post email your name, postal address and a request to be added to the mailing list to [info@lotuscreekwindfarm.com.au](mailto:info@lotuscreekwindfarm.com.au).

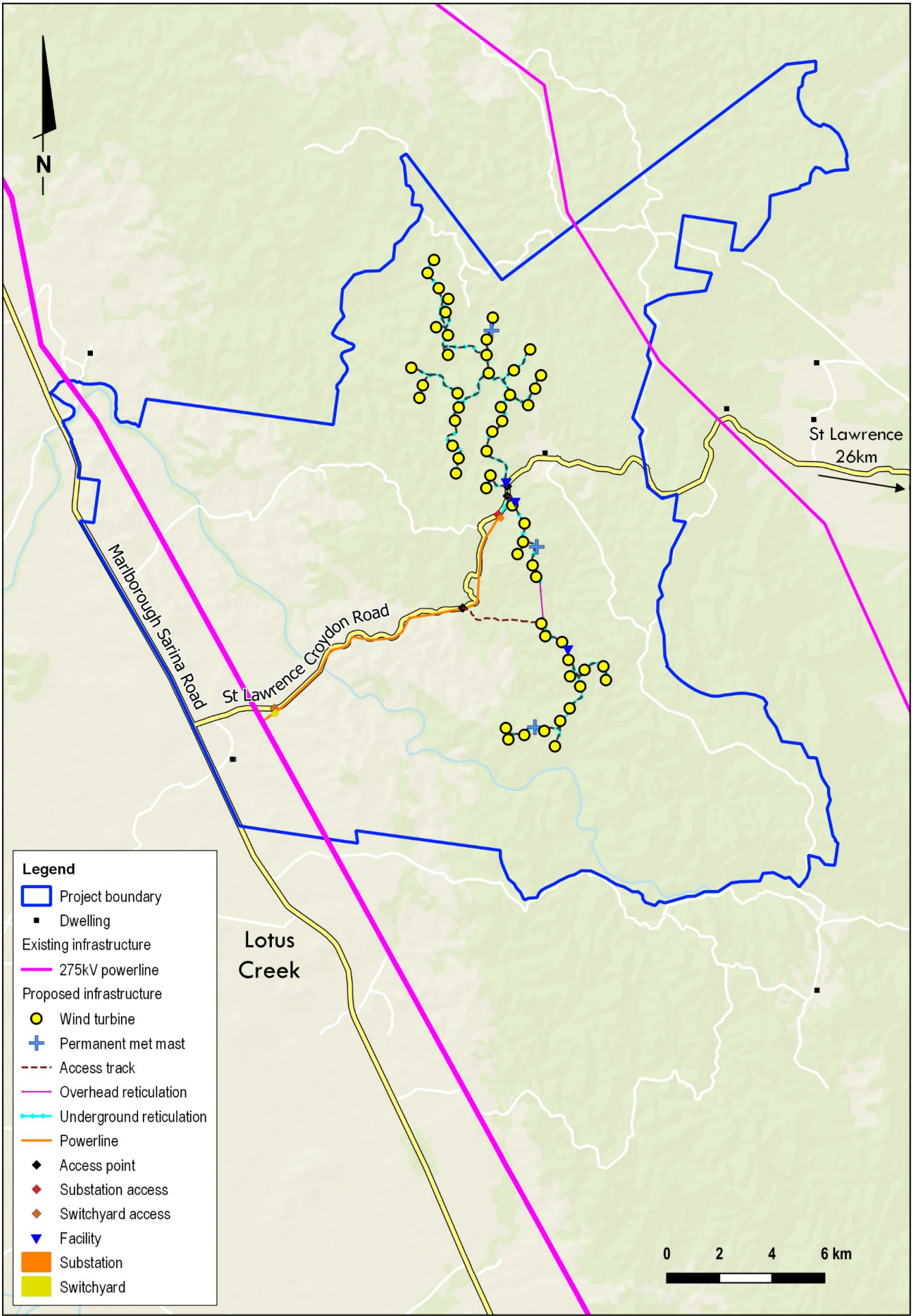
We respect your privacy and your personal details will only be used for this purpose.

## Questions and comments welcome

Questions and comments are welcome and can be sent to [info@lotuscreekwindfarm.com.au](mailto:info@lotuscreekwindfarm.com.au) or via the online feedback form on the website:

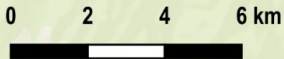
[lotuscreekwindfarm.com.au](https://lotuscreekwindfarm.com.au)

Right: Lotus Creek Wind Farm site map. The proposal involves 55 wind turbines connected via a new substation to the onsite 275 kV Nebo to Broadsound powerlines.



**Legend**

- Project boundary
- Dwelling
- Existing infrastructure
- 275kV powerline
- Proposed infrastructure
- Wind turbine
- + Permanent met mast
- Access track
- Overhead reticulation
- Underground reticulation
- Powerline
- ◆ Access point
- ◆ Substation access
- ◆ Switchyard access
- ▼ Facility
- Substation
- Switchyard



St Lawrence  
26km

Lotus  
Creek

Marlborough Sarina Road

St Lawrence Croydon Road

N

## Planning and assessment

### Queensland Government

- 1 Site selection, initial concept and preliminary investigations
- 2 Pre-lodgment meeting with State Assessment and Referral Agency (SARA)
- 3 Studies and assessments (prescribed by SARA State Code 23)

**WE ARE HERE** Application and assessments submitted to SARA

- 5 Assessment
- 6 Determination

### Commonwealth

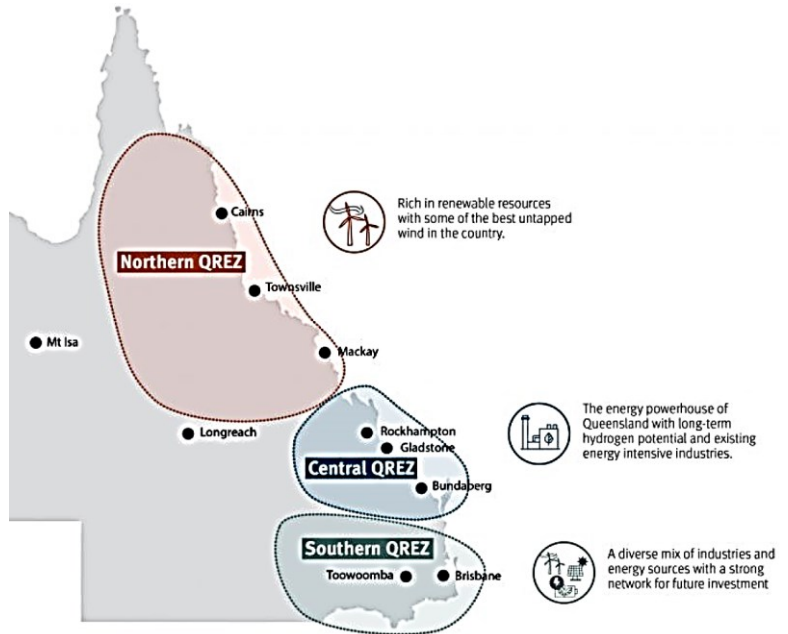
- 1 Referral to the Australian Department of Agriculture, Water and the Environment for review under the Commonwealth *Environment Protection and Biodiversity Conservation Act 1999* (EPBC Act)
- 2 Decision: controlled action (Referral 2020/8867), assessment by preliminary documentation

**WE ARE HERE** Request for further information (RFI)

- 4 Response to RFI submitted
- 5 Response accepted and put on public exhibition
- 6 *If required:* information revised
- 7 Determination

## Changing energy market

Lotus Creek Wind Farm is located in the Central Queensland Renewable Energy Zone (QREZ). The QREZ is one of three key zones in Queensland identified by the Australian Energy Market Operator (AEMO) as optimal for new projects to support Australia's clean energy transition.



Source: [epw.qld.gov.au/about/initiatives/renewable-energy-zones](http://epw.qld.gov.au/about/initiatives/renewable-energy-zones)

AEMO forecasts that Australia requires 26-50 Gigawatts (GW) of new grid-scale renewables over the next 20 years and most of that capacity is expected to come from solar and wind (optimal balance of 55/45).

Queensland has a target of 50% renewable energy generation by 2030. The Queensland Government has committed \$145 million to establishing the state's renewable energy zones and \$2 billion investment in energy assets and the Queensland Renewable Energy and Hydrogen Jobs Fund, as a critical part of the state's COVID-19 Economic Recovery Plan.

Central Queensland is uniquely positioned to capitalise on the growth in Australia's renewable energy market. With natural resources and strong grid infrastructure it is well placed to continue as an energy generation hub and take advantage of the clean energy transition.

## About Epuron

Epuron is one of Australia's longest operating and most experienced renewable energy companies. It specialises in the design of utility-scale wind and solar energy facilities and guiding those projects through the planning and assessment process. Epuron has been a leader in the growth of Australia's wind energy generation capacity over the past two decades. For more information visit [epuron.com.au](http://epuron.com.au)

### More information

Website: [lotuscreekwindfarm.com.au](http://lotuscreekwindfarm.com.au) or scan QR code  
Newsletter updates: [epuron.com.au/mailling-list-details](http://epuron.com.au/mailling-list-details)  
Project contact: Jessica Picton, Project Manager  
Email: [info@lotuscreekwindfarm.com.au](mailto:info@lotuscreekwindfarm.com.au)

