



# **Burrendong Wind Farm**

## **Project Update**

**Community Consultative Committee Meeting**

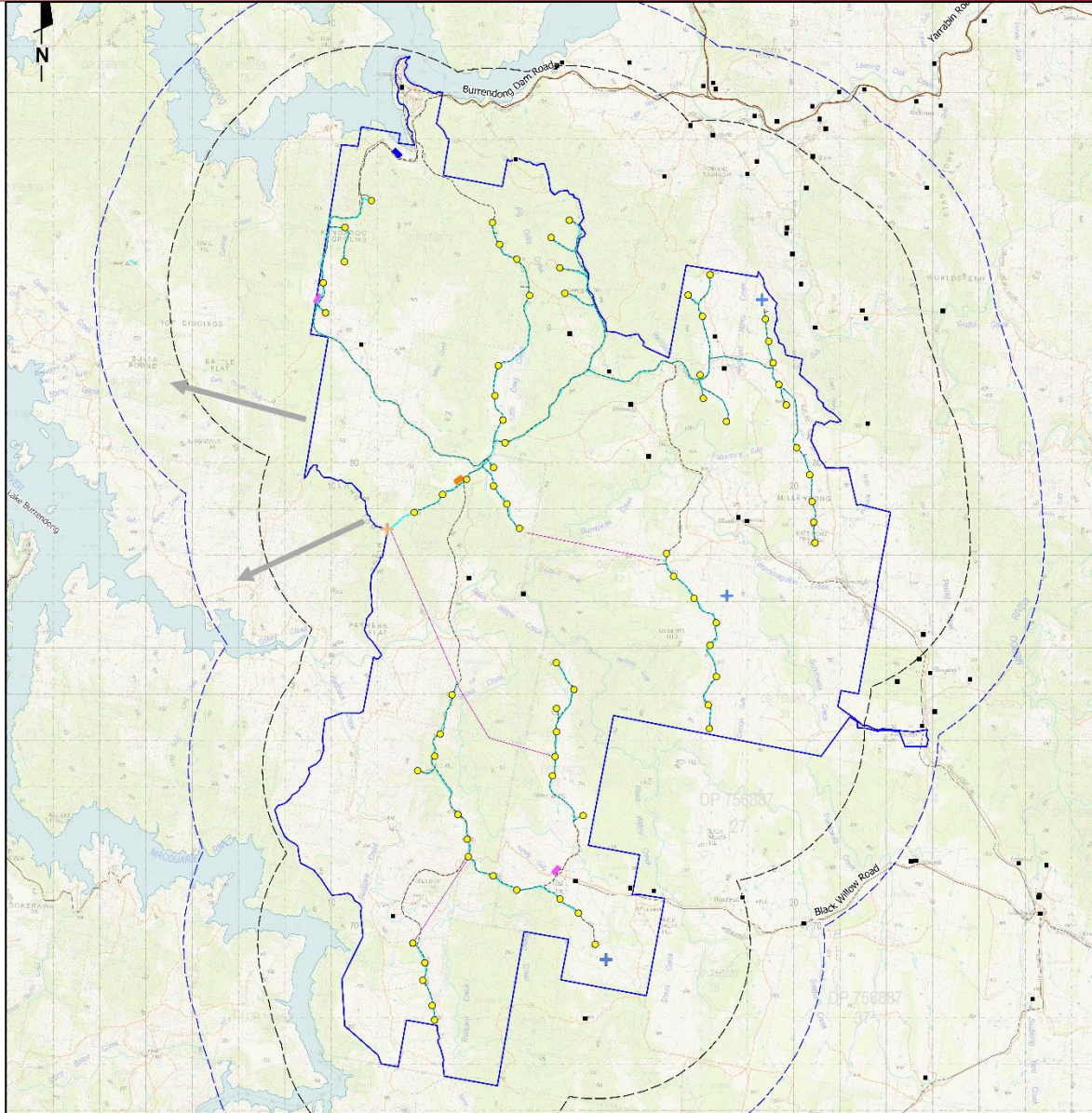
**25 November 2021**



## Acknowledgement of Country

*We acknowledge the Wiradjuri people as the Traditional Custodians of the land upon which we meet and their continuing connection to lands, waters and communities.*

*We pay our respects to Elders past, present and emerging.*





## Burrendong Wind Farm

- ▶ Located on freehold rural land east of Lake Burrendong
- ▶ Monitoring wind across the site since 2018
- ▶ Proposed 72 wind turbines
- ▶ Proposed turbine tip height up to 250m (~160m hub height and ~90m blade)
- ▶ Assessed as a Major Project under Part 4 of the *Environmental Planning and Assessment Act 1979* (EP&A Act)
- ▶ Environmental Impact Statement (EIS) studies for the development application underway in accordance with the Secretary's Environmental Assessment Requirements (SEARs)



## Current project development activities

- ▶ Wind resource monitoring
- ▶ Field surveys:
  - Vegetation mapping
  - Fauna habitat
  - Aboriginal heritage
  - Landscape and visual impact
- ▶ Background noise logging
- ▶ Consultation with landowners and neighbours



## Other environmental assessments

- ▶ Operational noise modelling
- ▶ Traffic & transport impact assessment
- ▶ Telecommunications impact assessment
- ▶ Surface water & ground water impact assessment
- ▶ Social and Economic impact assessment
- ▶ Aviation impact assessment



# Wind monitoring mast







## SoDAR







# Site vegetation mapping





## Planning and Assessment Process – NSW

- ▶ Scoping Document and request for SEARs
- ▶ SEARS issued by Department of Planning (DPIE)
- ▶ Preparation of EIS by proponent
- ▶ EIS reviewed by DPIE
- ▶ EIS on exhibition and public submissions accepted
- ▶ Responses to public submissions provided by proponent
- ▶ Regulatory assessment and determination (DPIE & IPC)



## Consultation – feasibility & assessment phase

- ▶ Project updates via mail and email
- ▶ Project website: [burrendongwindfarm.com.au](http://burrendongwindfarm.com.au)
- ▶ Phone calls and face-to-face meetings with non-involved residents ~3 km
- ▶ Meetings with Mid Western Regional Council and Dubbo Regional Council
- ▶ Consultation with NSW government departments and agencies
- ▶ Community information sessions



## Community benefits

- ▶ Community Enhancement Fund
  - Typically around \$2,500 - \$3,000 per turbine
  - Benefits to be realised in the local area eg road upgrades, mobile phone coverage
  - Structure and specifics to be outlined in Planning Agreement
  
- ▶ Significant job creation during construction followed by a small operations and maintenance team based locally
  
- ▶ Open to ideas on how to maximise the benefit of available community funding



## Timeline

- ▶ SEARs issued – 13 October 2020
- ▶ EPBC referral lodged – 25 March 2021
- ▶ EIS lodged & public exhibition – Q1/Q2 2022
- ▶ Project approvals – Q2 2023
- ▶ Construction commencement – 2024





# Thank you

**Andrew Wilson**  
**General Manager Development - NSW**

 [www.epuron.com.au](http://www.epuron.com.au)

 [a.wilson@epuron.com.au](mailto:a.wilson@epuron.com.au)