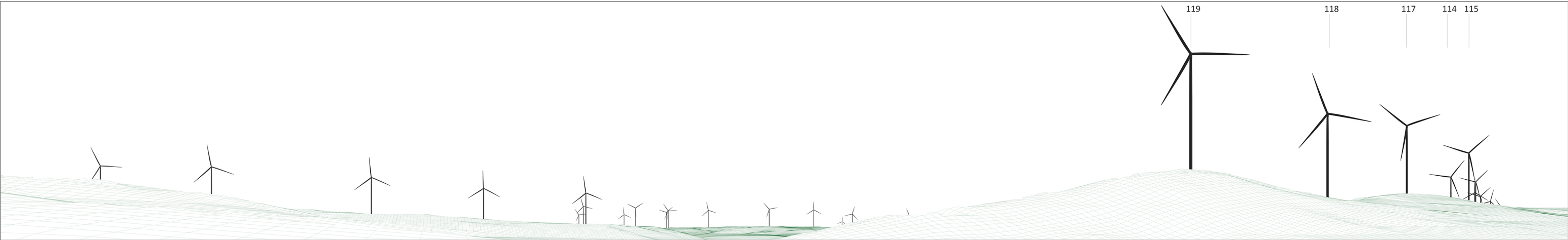


# Burrendong Wind Farm Proposed 72 Turbine Layout



Photomontage 3: Wallawaugh Rd, Hargraves - Approximate distance to closest visible wind turbine 119 is 1,194 metres



Wireframe view from Wallawaugh Rd, Hargraves - Approximate distance to closest wind turbine 119 is 1,194 metres

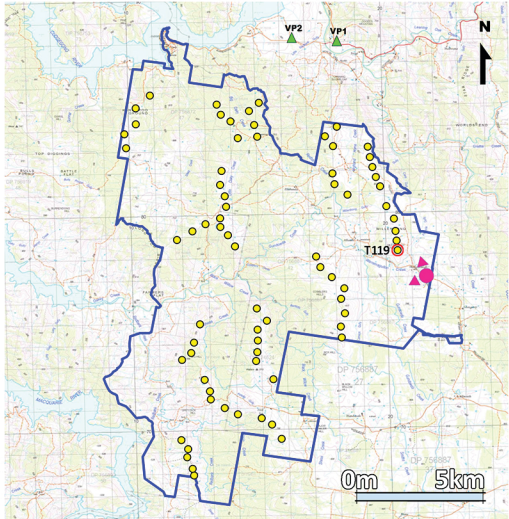
Legend

Approximate photo location and indicative view direction toward the Wind Farm turbines

Other Viewpoint locations



Aerial of photograph location



Site layout



Existing panorama view from Wallawaugh Rd, Hargraves

### General Notes

Photos taken at 9.05am on 27th Sept 2021  
Coordinates: E: 721205, N: 6377339  
Elevation: 694 AHD  
Camera: Nikon D650, 50mm 1:1.4D Lens  
Original Format - A1 Landscape

250m tip height, 165m hub height and 170m rotor.  
Closest visible turbine indicated by red line.  
This viewpoint has a horizontal view angle of around 106 degrees.  
This is a preliminary layout only and is subject to change as detailed planning proceeds.

\*The purpose of this Photomontage is to provide a ‘representation’ of the possible visual impact of this project for the purpose of discussion. The layout is subject to change in accordance with the planning process. These images give a reasonable impression of the scale of turbines and the distance to turbines, but due to vegetation screening and the complexity of working off useful landscape features, they cannot be 100% accurate. A static image cannot convey turbine movement, different lighting, weather and seasonal conditions that vary through time and resolution of image. **Wireframe limitations:** A wireframe image gives a reasonable impression of the scale of the turbines relative to the surrounding landscape features, but can never be 100% accurate. A static wireframe image cannot convey turbine movement.