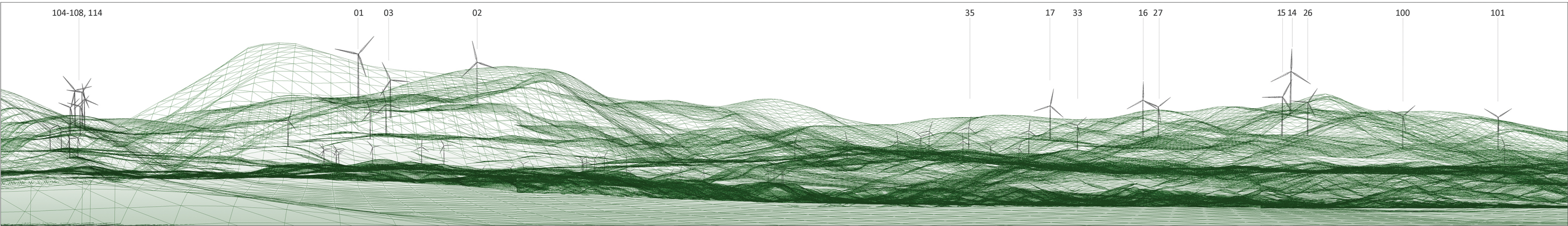


Burrendong Wind Farm Proposed 72 Turbine Layout



Photomontage 1: view from the corner of Yarrabin Road & Burrendong Dam Road – Approximate distance to closest visible wind turbine 1 is 3,830 metres, (bearing to turbine 1 from this viewpoint is 180.4 degrees)



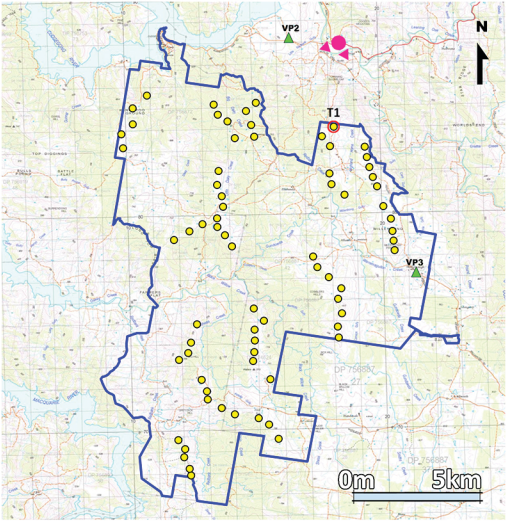
Wireframe view from the corner of Yarrabin Road & Burrendong Dam Road – Approximate distance to closest wind turbine 1 is 3,830 metres

Legend

- Approximate photo location and indicative view direction toward the Wind Farm turbines
- Other Viewpoint locations



Aerial of photograph location



Site layout



Existing panorama view from the corner of Yarrabin Road & Burrendong Dam Road

General Notes
Photos taken at 1.30pm on 6th Oct 2020
Coordinates: E: 718305, N: 6387884
Elevation: 379 AHD
Camera: Nikon D650, 50mm 1:1.4D Lens
Original Format - A1 Landscape

250m tip height, 165m hub height and 170m rotor.
Closest visible turbine indicated by red line.
This viewpoint has a horizontal view angle of around 80 degrees.
This is a preliminary layout only and is subject to change as detailed planning proceeds.

*The purpose of this Photomontage is to provide a ‘representation’ of the possible visual impact of this project for the purpose of discussion. The layout is subject to change in accordance with the planning process. These images give a reasonable impression of the scale of turbines and the distance to turbines, but due to vegetation screening and the complexity of working off useful landscape features, they cannot be 100% accurate. A static image cannot convey turbine movement, different lighting, weather and seasonal conditions that vary through time and resolution of image. **Wireframe limitations:** A wireframe image gives a reasonable impression of the scale of the turbines relative to the surrounding landscape features, but can never be 100% accurate. A static wireframe image cannot convey turbine movement.