

# Burrendong Wind Farm

Project Update

November 2021



## Location



## NSW Central-West Orana Renewable Energy Zone

The Burrendong Wind Farm site east of Lake Burrendong has an excellent wind resource and is located in the NSW Central-West Orana Renewable Energy Zone (CWO REZ).

The CWO REZ is one of the key areas in NSW identified as optimal for new projects to support the state's renewable energy growth and meet its renewable energy target.

For more information on NSW renewable energy zones visit [energy.nsw.gov.au/renewables/renewable-energy-zones](https://energy.nsw.gov.au/renewables/renewable-energy-zones)

or scan the QR code:



## Preparation of assessment

The final onsite surveys for the cultural heritage and biodiversity assessments have been done and specialist reports for the project's Environmental Impact Assessment (EIS) are due to be completed soon.

Documents for the key steps in the project's planning and assessment are available on the NSW Government's Planning Portal for Major Projects at [planningportal.nsw.gov.au/major-projects/projects](https://planningportal.nsw.gov.au/major-projects/projects)

The project's EPBC Act referral documentation is also available on the EPBC Act - Public notices portal (Referral ID 2021/8916) at [epbcnotices.environment.gov.au/publicnoticesreferrals](https://epbcnotices.environment.gov.au/publicnoticesreferrals)

## Community information sessions

Following the easing of COVID restrictions information sessions will be held in Mudgee later this month to give interested members of the community an opportunity to learn more about the proposal and meet members of the project team. Two session times are available and each session will be open as a 'drop-in' for 1.5 hours.

### Burrendong Wind Farm

### Community Information Sessions

Thursday 25 November 2021

Conference Room, The Horatio,  
15 Horatio St, Mudgee

Times: 3pm to 4.30pm or 5pm to 6.30pm

Please note due to COVID protocols places are limited and pre-registration with confirmation of full vaccination is required.

To attend please email contact details, confirmation of double vaccination and selected session by Tuesday 23 November to: [info@burrendongwindfarm.com.au](mailto:info@burrendongwindfarm.com.au). Attendees will be required to present proof of full vaccination status upon entry.

## Planning and assessment

The project is State significant development and subject to rigorous assessment by the NSW Government.

It is also a 'controlled action' under the Commonwealth *Environment Protection and Biodiversity Conservation Act 1999*, so will be assessed under the bilateral agreement between the NSW and Federal Governments.

Below are the key steps in the assessment process.

- 1 Site selection
- 2 Initial concept and consultation
- 3 Scoping Report submitted to the NSW Department of Planning, Industry and Environment (DPIE)
- 4 Secretary's Environmental Assessment Requirements (SEARs) for Environmental Impact Statement (EIS) issued by DPIE

WE  
ARE  
HERE

Studies, assessments, finalising site design

- 6 Development application (DA) and EIS lodged with DPIE

- 7 DA and EIS on public exhibition

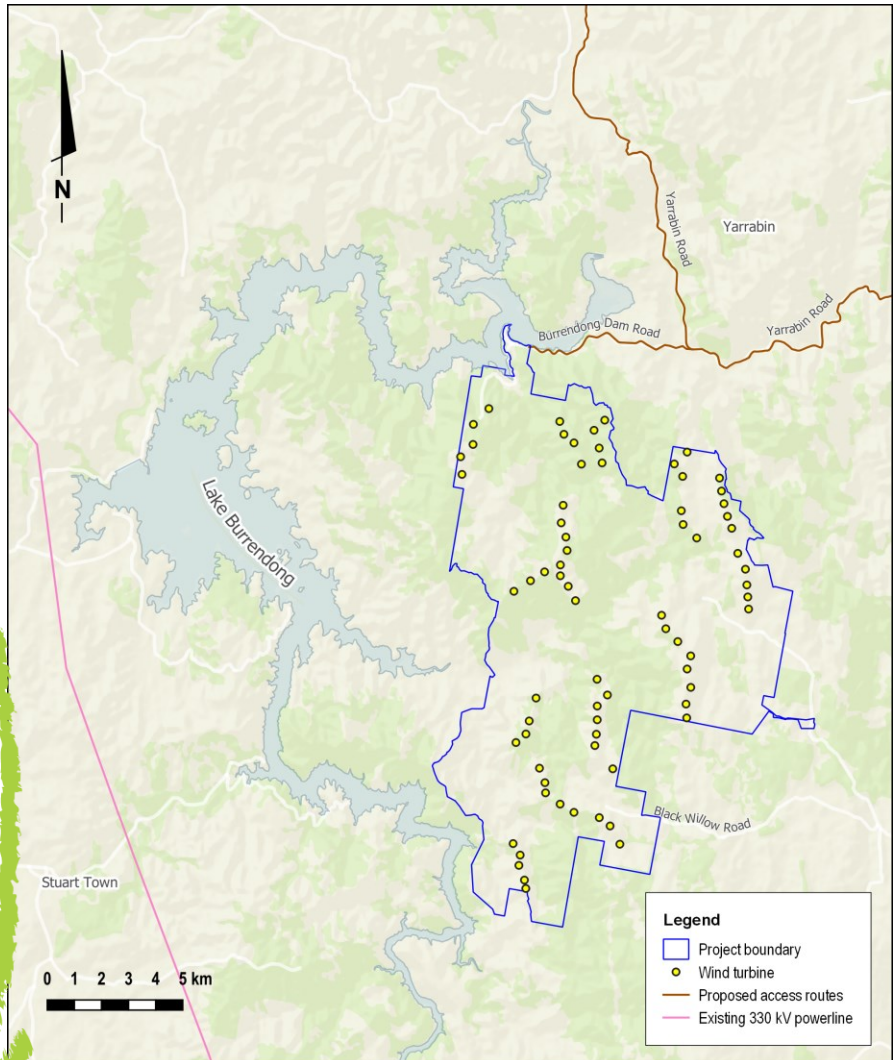
- 8 Responses to public submissions

- 9 Determination by DPIE

- 10 DPIE assessment report prepared for the Minister, Federal Department of Agriculture, Water and Environment (DAWE)

- 11 Determination by DAWE

## Burrendong Wind Farm preliminary wind turbine layout



The preliminary design involves a layout of 72 wind turbines with an estimated generation capacity of 446 megawatts.

## Questions and comments welcome

Epuron values input from members of the local community.

Please send any questions and comments to the Burrendong Wind Farm project team via:

- Email to [info@burrendongwindfarm.com.au](mailto:info@burrendongwindfarm.com.au),
- A member of the Burrendong Wind Farm Community Consultative Committee, or
- The form available under the 'Feedback' tab on the project website [burrendongwindfarm.com.au](http://burrendongwindfarm.com.au).

### More information

Website: [burrendongwindfarm.com.au](http://burrendongwindfarm.com.au) or scan QR code:

Register for updates: [epuron.com.au/mailling-list-details](http://epuron.com.au/mailling-list-details)

Project contact: Andrew Wilson

General Manager Development, NSW

Email: [info@burrendongwindfarm.com.au](mailto:info@burrendongwindfarm.com.au)

