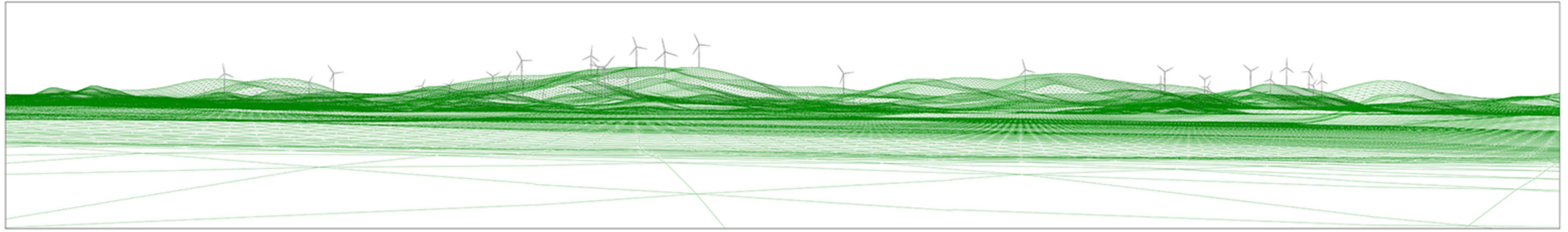


# Chalumbin Wind Farm Proposed Layout July 2021 – 95 Turbines



**Photomontage 1: view from 15225 Kennedy HWY** - Approximate distance to closest visible wind turbine T1 is 6,020 metres, (bearing to T1 from this viewpoint is 134.2 degrees)

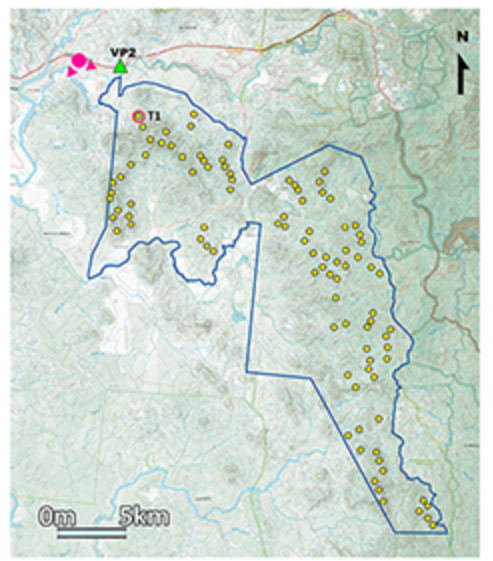


**Wireframe view from 15225 Kennedy HWY** - Approximate distance to closest wind turbine T1 is 6,020 metres

- Legend**
- Approximate photo location and indicative view direction toward the Wind Farm turbines
  - Other Viewpoint locations



**Aerial of photograph location**



**Site layout**



**Existing panorama view from 15225 Kennedy HWY**

**General Notes**  
 Photos taken at 10.45am on 21st May 2021  
 Coordinates: E: 320109, N: 8048005  
 Elevation: 674 AHD  
 Camera: Nikon D850, 50mm 1:1.4D Lens  
 Original Format - A1 Landscape  
 230m tip height, 149m hub height and 162m rotor.

This viewpoint has a horizontal view angle of around 74 degrees.  
 This is a preliminary layout only and is subject to change as detailed planning proceeds.  
 Closest visible turbine indicated by red line.

\*The purpose of this Photomontage is to provide a 'representation' of the possible visual impact of this project for the purpose of discussion. The layout is subject to change in accordance with the planning process. These images give a reasonable impression of the scale of turbines and the distance to turbines, but due to vegetation screening and the complexity of working off useful landscape features, they cannot be 100% accurate. A static image cannot convey turbine movement, different lighting, weather and seasonal conditions that vary through time and resolution of image. Wireframe limitations: A wireframe image gives a reasonable impression of the scale of the turbines relative to the surrounding landscape features, but can never be 100% accurate. A static wireframe image cannot convey turbine movement.