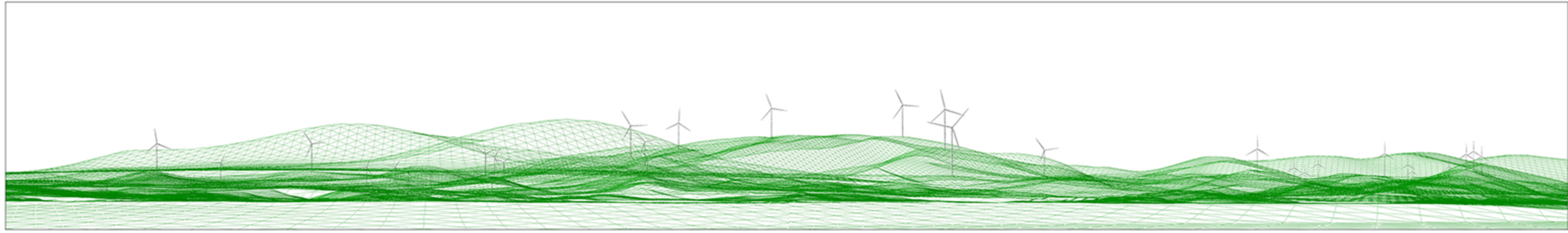


Chalumbin Wind Farm Proposed Layout July 2021 – 95 Turbines



Photomontage 2: view from 14909 Kennedy HWY - Approximate distance to closest wind turbine T1 is 3,760m, (bearing to T1 from this viewpoint is 160 degrees)

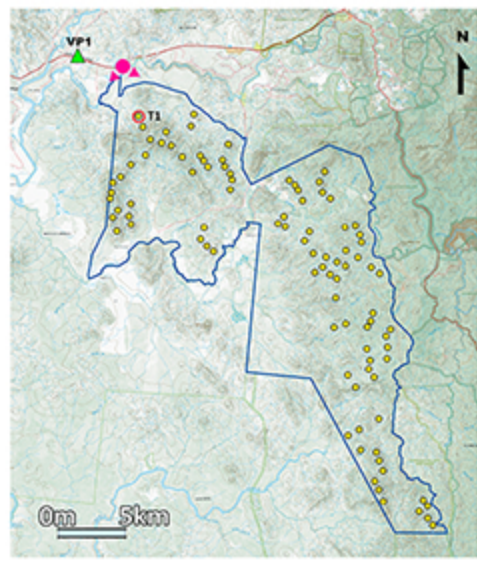


Wireframe view from 14909 Kennedy HWY - Approximate distance to closest wind turbine T1 is 3,760m

- Legend**
- Approximate photo location and indicative view direction toward the Wind Farm turbines
 - Other Viewpoint locations



Aerial of photograph location



Site layout



Existing panorama view from 14909 Kennedy HWY

General Notes
 Photos taken at 11.30am on 21st May 2021
 Coordinates: E: 323157, N: 8047375
 Elevation: 663 AHD
 Camera: Nikon D850, 50mm 1:1.4D Lens
 Original Format - A1 Landscape
 230m tip height, 149m hub height and 162m rotor.

This viewpoint has a horizontal view angle of around 74 degrees.
 This is a preliminary layout only and is subject to change as detailed planning proceeds.
 Closest visible turbine indicated by red line.

*The purpose of this Photomontage is to provide a 'representation' of the possible visual impact of this project for the purpose of discussion. The layout is subject to change in accordance with the planning process. These images give a reasonable impression of the scale of turbines and the distance to turbines, but due to vegetation screening and the complexity of working off useful landscape features, they cannot be 100% accurate. A static image cannot convey turbine movement, different lighting, weather and seasonal conditions that vary through time and resolution of image. Wireframe limitations: A wireframe image gives a reasonable impression of the scale of the turbines relative to the surrounding landscape features, but can never be 100% accurate. A static wireframe image cannot convey turbine movement.