

Guildford Wind Farm

Project Update

September 2021



Location



The site for the proposed Guildford Wind Farm, approximately 7km north-east of Waratah and 15km south of Hampshire, is located in Tasmania's North West Renewable Energy Zone (REZ).

The North West REZ is one of three zones in Tasmania identified by the Australian Energy Market Operator as optimal for new projects to support Tasmania's renewable energy growth and meet its world-leading renewable energy target.

The site has strong winds, is used for commercial forestry which is complementary to wind farming, and includes a powerline with available capacity, making it ideally located for wind energy generation.

Assessment studies to start soon

The Environment Protection Authority (EPA) Tasmania has issued final Project Specific Guidelines for the proposed Guildford Wind Farm, identifying the key matters to be assessed for the project's Environmental Impact Statement.

The Department of Agriculture, Water and the Environment (DAWE) has also deemed the proposal to be a 'controlled action' under the Commonwealth *Environment Protection and Biodiversity Conservation Act 1999* (EPBC Act). This means it must also be assessed under the EPBC Act, which the EPA will do on DAWE's behalf under a bilateral agreement. Guildford Wind Farm's EPBC Act referral decision (Reference ID 2020/8797) is available on the EPBC Act - Public notices portal: epbnotices.environment.gov.au/publicnoticesreferrals

Work on the various studies will commence soon. A key area for assessment is the Tasmanian wedge-tailed eagle. Eagle utilisation across the site will be studied for up to two years (eight seasons). Epuron is tracking a number of eagles around the project area using GPS devices as part of a wider research project by the University of Tasmania into how wedge-tailed eagles use the landscape. Independent ecology specialists will also conduct on-ground surveys of eagle flights. Findings from these studies and the various other assessments required, will inform the final wind turbine layout and project design.

Comments and questions welcome

Epuron welcomes input from members of the local community and other interested parties to help shape the project and maximise community benefits. If you have questions or would like to share your views please email the project team on info@guildfordwindfarm.com.au or you can submit a feedback form via the website guildfordwindfarm.com.au.

Subject to the lifting of COVID related restrictions the project team looks forward to hosting a community information session in the local area as soon as practicable. To be notified directly of information sessions when these are scheduled and receive project updates via email register online at epuron.com.au/mailling-list-details.

EPURON

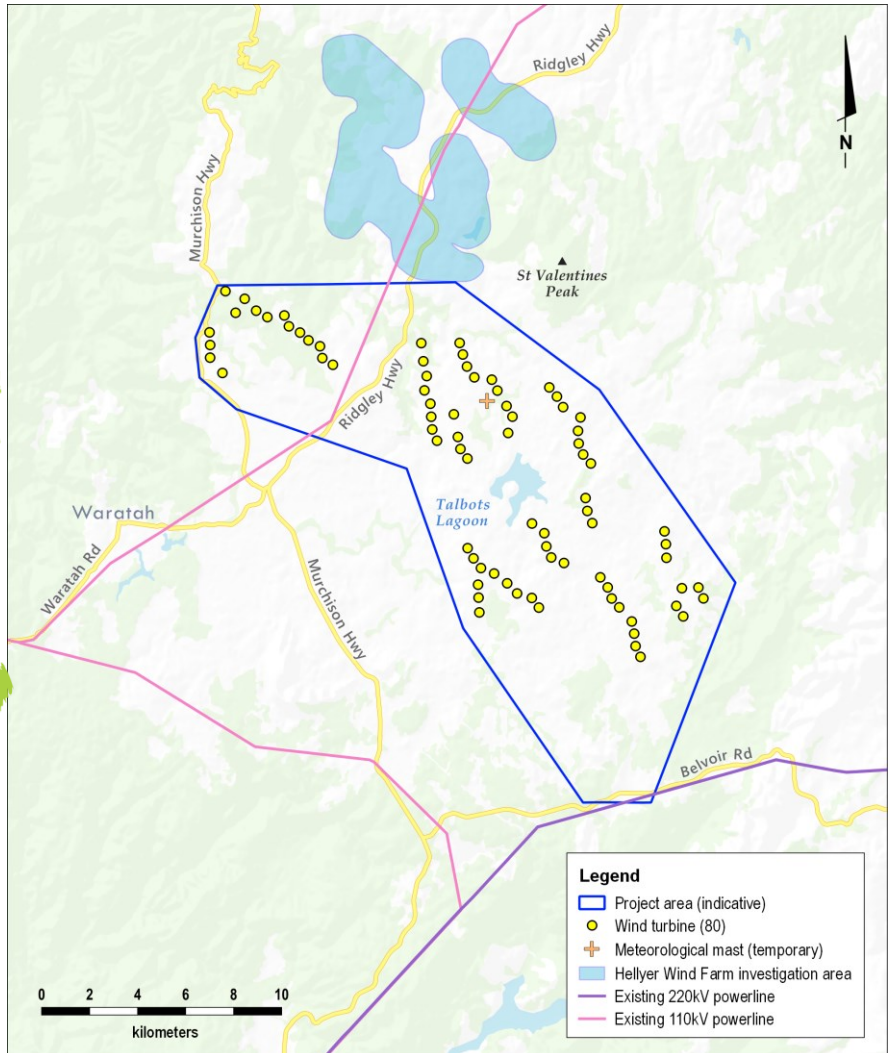
Planning and assessment

Guildford Wind Farm initial proposed site layout

- 1 Site selection and preliminary investigations
- 2 Referral to the Federal Department for Agriculture, Water and the Environment (DAWE) for review under the Commonwealth *Environment Protection and Biodiversity Conservation Act 1999* (EPBC Act)
- 3 EPBC Act referral decision: controlled action
- 4 Notice of Intent (NOI) lodged with the Environment Protection Authority (EPA) Tasmania
- 5 Project Specific Guidelines for the Environmental Impact Statement (EIS) issued by the EPA

WE ARE HERE Studies, assessments, site design

- 7 Development application (DA) and EIS submitted to Waratah Wynyard Council
- 8 DA and EIS referred by Council to the EPA
- 9 Preliminary assessment by Council and the EPA
- 10 DA and EIS on exhibition for public submissions
- 11 Responses to public submissions and requests for additional information from stakeholders (if required)
- 12 Assessment by the EPA Board
- 13 Determination by the EPA Board and approval conditions provided to Council and DAWE
- 14 Determination by DAWE
- 15 Assessment by Council
- 16 Determination by Council



Map shows the proposed layout of 80 wind turbines. The project area is adjacent to a site to the north also being investigated for a potential wind farm, Hellyer Wind Farm.

Meteorological mast to provide more detailed wind data

Installation of a meteorological mast north-west of Talbots Lagoon (shown on map +) was completed in June. Over the last few years the wind resource at the site has been measured using smaller portable devices. The 122m high mast includes various instruments to measure wind speed and direction and will provide more detailed and important wind data to inform the final wind turbine layout and project design.

Register for project updates

Epuron is keen to keep members of the local community and other interested parties up to date on project developments and opportunities to provide feedback. If you would like to receive updates via email please register online and if you would prefer to receive updates in the mail please email your postal address to the project team (details below). We respect your privacy and your personal details will only be used for this purpose.

More information

Website guildfordwindfarm.com.au or scan the QR code
Register for updates: epuron.com.au/mailling-list-details
Project team:
Sandra Weinhold, Project Manager
Donna Bolton, General Manager Development - Tasmania
Email: info@guildfordwindfarm.com.au

