

Burrendong Wind Farm

Project Update

September 2021



Location



NSW Central-West Orana Renewable Energy Zone

The Burrendong Wind Farm site, east of Lake Burrendong and with an excellent wind resource, is located in the NSW Central-West Orana Renewable Energy Zone (CWO REZ).

The CWO REZ is one of the key areas in NSW identified as optimal for new projects to support the state's renewable energy growth and meet its renewable energy target.

For more information on NSW renewable energy zones visit energy.nsw.gov.au/renewables/renewable-energy-zones

or scan the QR code:



Assessment work continues

Over the past six months work on the proposal's Environmental Impact Statement (EIS) has continued despite delays caused by COVID restrictions, and a few outstanding field surveys will be completed after restrictions have been lifted. Assessments for the EIS will include landscape and visual impact, noise, biodiversity, traffic and transport, heritage, water and soils, waste, and social and economic impacts.

Epuron referred the project to the Federal Department of Agriculture, Water and the Environment (DAWE) for review under the Commonwealth *Environment Protection and Biodiversity Conservation Act 1999* (EPBC Act) and it has been deemed a 'controlled action' (Referral ID 2021/8916). The decision means the proposal must also be assessed and approved under the EPBC Act. This will be done under a bilateral agreement between DAWE and the NSW Department of Planning, Industry and Environment.

The project's Community Consultative Committee (CCC), chaired by Garry West, has been appointed and held its first meeting in Mudgee in May. The meeting was attended by community members Jacqui and Nathan Coates, Heather Gough-Fuller, Justin Gard and Carmel Vecchio, and stakeholder representatives Brad Bliss and Chris Pilley.

CCC members and meetings provide an important channel for the community to engage with Epuron on the project. Members of the community are able to raise issues via the chairperson or one of the committee's community members.

Comments and questions welcome

Epuron welcomes input from members of the local community and other interested parties to help shape the project and maximise community benefits. If you have questions or would like to share your views please email the project team on info@burrendongwindfarm.com.au, speak to a member of the CCC or submit a feedback form via the website: burrendongwindfarm.com.au

Subject to the lifting of COVID related restrictions the project team looks forward to hosting a community information session in the local area as soon as practicable. To be notified directly of information sessions when these are scheduled and receive project updates via email register online at epuron.com.au/mailling-list-details.

EPURON

Planning and assessment

The proposed Burrendong Wind Farm is State significant development and subject to rigorous assessment by the NSW Government. Below are the key steps in that process and the status of the project.

- 1 Site selection
- 2 Initial concept and consultation
- 3 Scoping Report submitted to the NSW Department of Planning, Industry and Environment (DPIE)
- 4 Secretary's Environmental Assessment Requirements (SEARs) for Environmental Impact Statement (EIS) issued by DPIE

WE
ARE
HERE

Studies, assessments,
site design

- 6 Development application (DA) and EIS lodged with DPIE
- 7 EIS on exhibition for public submissions
- 8 Responses to public submissions
- 9 Assessment by DPIE
- 10 Determination

EPBC Act

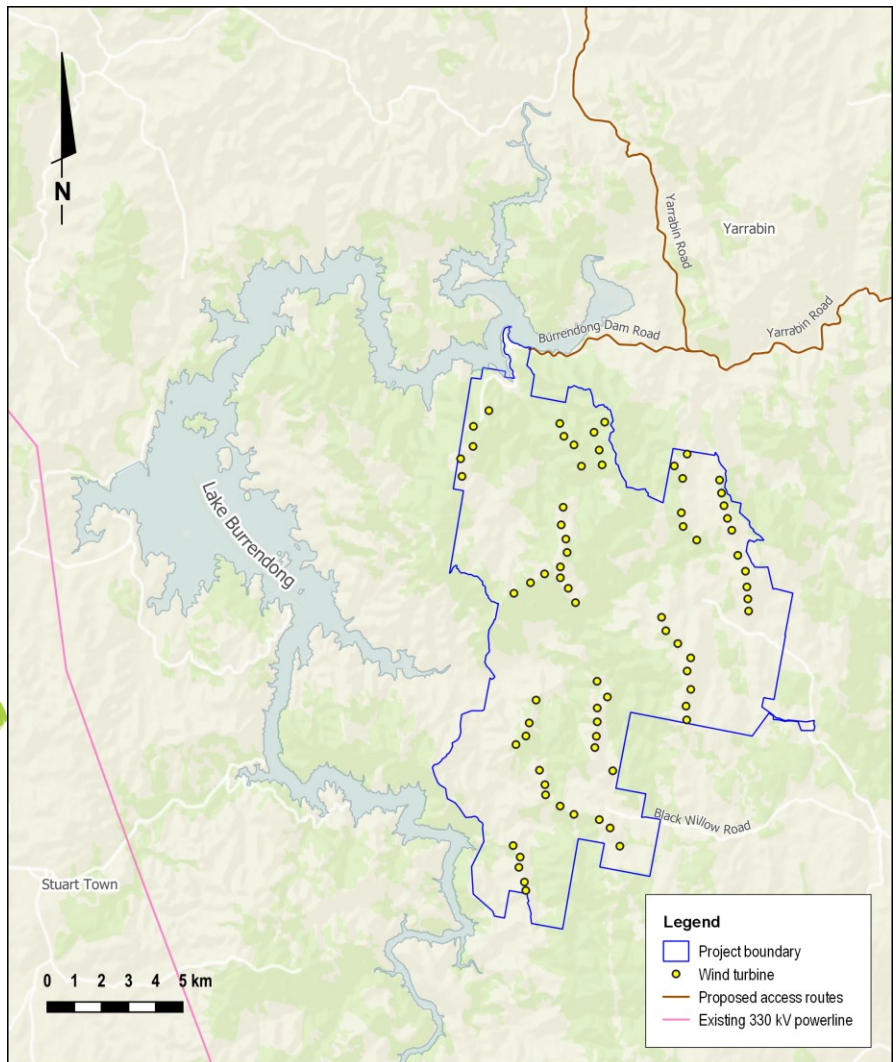
- 1 Referral to the Federal Department of Agriculture, Water and the Environment for review under the Commonwealth *Environment Protection and Biodiversity Conservation Act 1999* (EPBC Act)

WE
ARE
HERE

Decision: controlled action to be assessed under bilateral agreement

- 3 Determination

Burrendong Wind Farm preliminary wind turbine layout



The preliminary proposal involves a layout of 72 wind turbines

Find planning documents online

Planning documents for State significant developments are available on the NSW Planning Portal for Major Projects. Search 'Burrendong Wind Farm' at planningportal.nsw.gov.au/major-projects/projects

The project's EPBC referral decision is available on the EPBC Act - Public notices portal (Referral ID 2021/8916): epbcnotices.environment.gov.au/publicnoticesreferrals

Register for updates

Epuron is keen to keep members of the local community and other interested parties up to date on project developments and opportunities to provide feedback. If you would like to receive updates via email please register online and if you would prefer to receive updates in the mail please email your postal address to the project team (details below).

We respect your privacy and your personal details will only be used for this purpose.

More information

Website: burrendongwindfarm.com.au or scan the QR code

Register for updates: epuron.com.au/mailling-list-details

Project contact: Andrew Wilson

General Manager Development, NSW

Email: info@burrendongwindfarm.com.au

