

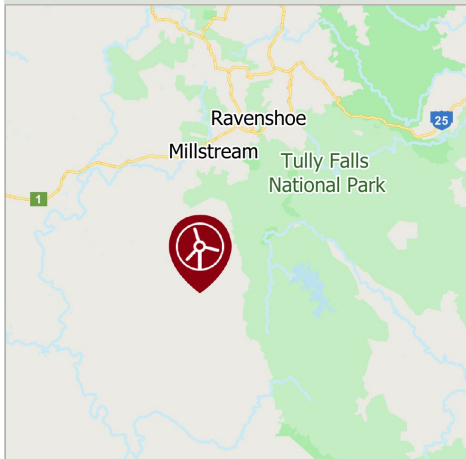
Chalumbin Wind Farm

Project Update

September 2021



Location



The Chalumbin Wind Farm site, approximately 10km south of Ravenshoe, is located in the Northern Queensland Renewable Energy Zone (QREZ).

The Northern QREZ, with some of the best wind resources in the country, is one of three key zones in Queensland identified by the Australian Energy Market Operator (AEMO) as optimal for new projects to support the state's renewable energy growth and meet its renewable energy target.

As well as the strong winds, the site is close to road transport, distant from nearby townships and includes a powerline with available capacity, making it ideally located for wind energy generation.

Assessment work underway

Australian-owned renewable energy company Epuron is preparing a development application for the proposed Chalumbin Wind Farm south of Ravenshoe in north Queensland. Onsite technical studies required for the environmental assessment are nearing completion, Epuron is finalising an Indigenous Land Use Agreement with the Jirrbal People and grid connection studies with Powerlink are underway.

The project has also been referred to the Federal Department of Agriculture, Water and the Environment (DAWE) for review under the Commonwealth *Environment Protection and Biodiversity Conservation Act 1999* (EPBC Act) and determined to be a 'controlled action'. This means the application must also be assessed and approved under the EPBC Act. After ecological studies are completed and with guidance from DAWE and Queensland's State Assessment and Referral Agency Epuron's consulting ecologists and environmental scientists will develop strategies to achieve a net positive outcome for biodiversity around the project area over the longer term.

Prior to finalising reports for the application an information session will be held in Ravenshoe to give members of the local community an opportunity to discuss the proposal with the project team. We are pleased to advise that the July session that was postponed due to COVID has been rescheduled. Details below.

Community Information Session

- Rescheduled -

Interested members of the community are invited to join the Chalumbin Wind Farm team during an informal drop-in information session to learn more about the project, ask questions and provide feedback.

3-5pm Thursday 16 September 2021
Ravenshoe Town Hall

Important note: please advise intention to attend and preferred contact details by email to David Blake: david@blake.id.au. If the session has to be rescheduled due to COVID registered attendees will be notified directly.

EPURON

Planning and assessment process – key steps

State

- 1 Site selection, initial concept and preliminary investigations
- 2 Pre-lodgement meeting with State Assessment and Referral Agency (SARA)

WE ARE HERE

Studies and assessments (prescribed by SARA State Code 23)

- 4 Application and assessments submitted to SARA
- 5 *If required* - further information requested and further assessment
- 6 *If required* - public notification of proposal
- 7 Assessment
- 8 Determination

Commonwealth

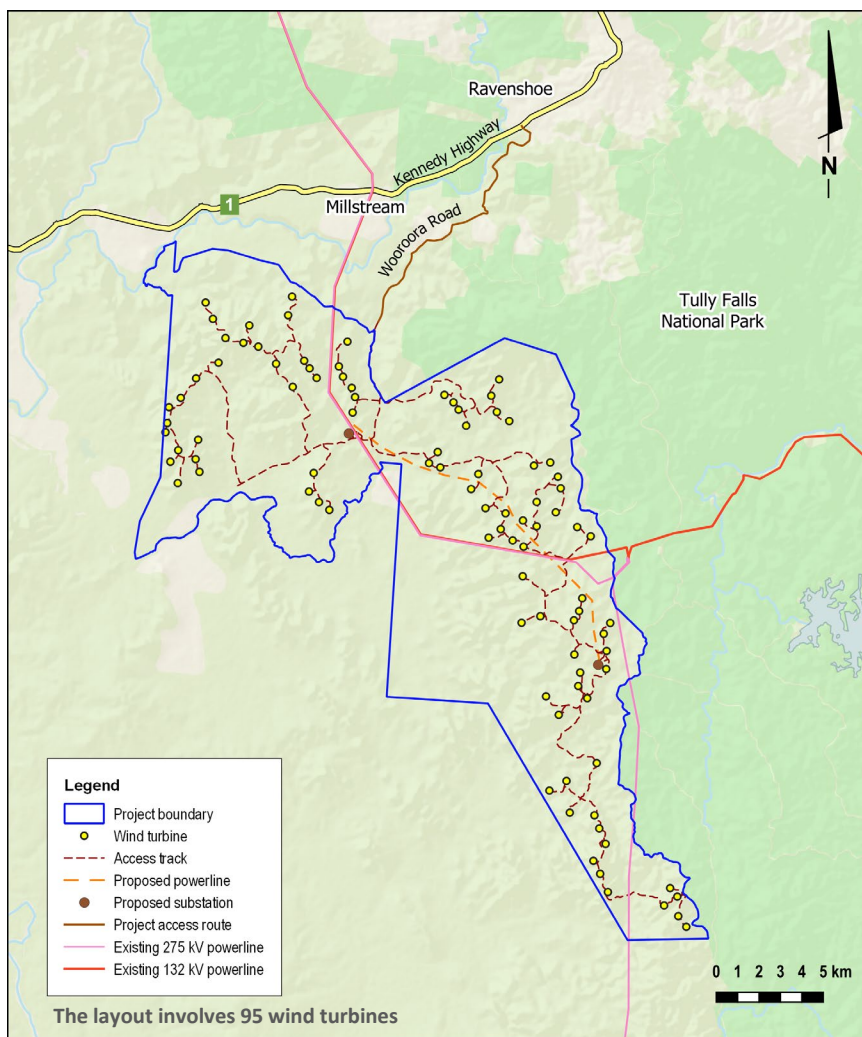
- 1 Referral to the Federal Department of Agriculture, Water and the Environment for review under the Commonwealth *Environment Protection and Biodiversity Conservation Act 1999* (EPBC Act)

WE ARE HERE

Determination: controlled action

- 3 *If required* - request for further information (RFI)
- 4 *If required* - response to RFI submitted
- 5 *If required* - response accepted and put on public exhibition
- 6 Determination

Chalumbin Wind Farm proposed site layout



Project benefits

EMPLOYMENT – Chalumbin Wind Farm is expected to provide about 250-350 jobs during the construction period and 15-30 ongoing jobs for operation.

ECONOMIC BOOST - Construction would provide work for Queensland-based contractors and a significant boost to the local economy, especially for surrounding accommodation, retail, service and hospitality businesses. Contractors and businesses can email the project team (see below) to register interest in providing services or facilities.

CLEAN ENERGY - Growth in Queensland's renewable energy capacity will deliver affordable, clean, reliable electricity to households and businesses and create economic opportunities for local communities. Chalumbin Wind Farm would contribute approximately 570 megawatts to the Queensland grid and the Queensland Government's renewable energy target of 50% renewable energy generation by 2030.

More information

Website: chalumbinwindfarm.com.au or scan the QR code

Register for updates: epuron.com.au/mailing-list-details/

Project contact: Paul Stangroom, Development Director

Email: info@chalumbinwindfarm.com.au

