

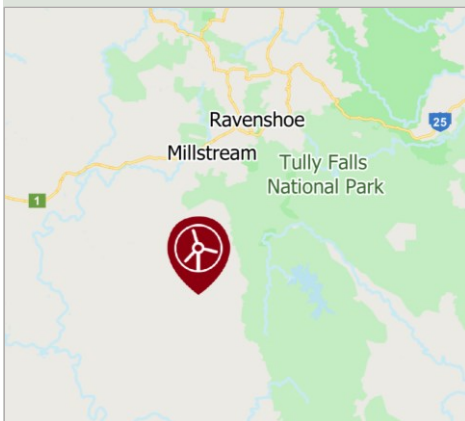
Chalumbin Wind Farm

Project Introduction

June 2021



Location



About Epuron

Epuron is a leading Australian-owned renewable energy company specialising in the design and planning of utility-scale wind and solar energy generation facilities. Founded in 2003, the company has been involved in more than 20 renewable energy projects around Australia.

Epuron's wind farm experience extends to 18 projects including four that are now operating, three due for construction and 11 going through the planning process.

The company's current projects include Lotus Creek Wind Farm, Boulder Creek Wind Farm and Specimen Hill Wind Farm in central Queensland.

For more information on Epuron and its experience please visit epuron.com.au

Wind farm proposal

Australian renewable energy company Epuron is investigating an area approximately 10km south of Ravenshoe for a wind farm. The site seems particularly suitable for wind energy generation because:

- there is a strong wind resource
- it is close to existing high voltage transmission lines
- there is good road transport access
- it is away from populated areas, reducing the likelihood of amenity impacts.

On-site studies and wind monitoring are underway and Epuron is liaising with landowners and the Queensland Government to determine planning assessment requirements for the project.

Epuron has also established a Cultural Heritage Management Agreement (CHMA) with the Jirrbal People and will soon refer the proposal to the Federal Department of Agriculture, Water and the Environment for review under the Commonwealth *Environment Protection and Biodiversity Conservation Act 1999* (EPBC Act).

For a map of the current proposed design with 95 wind turbines and the proposal's status in the planning process **please see overleaf**.

Prior to lodging a development application and accompanying environmental assessment Epuron is hosting an information session in Ravenshoe. Interested members of the community are encouraged to visit the session to learn more about the project.

Community information session

Epuron invites interested members of the community to join the Chalumbin Wind Farm project team during a drop-in information session to learn more about the proposal and ask questions.

3-5pm Thursday 22 July 2021

CWA Hall, 15 Herbert Street, Ravenshoe

Please RSVP - for catering and to manage COVID-19 requirements please RSVP to David Blake by Friday 16 July 2021: david@blake.id.au

EPURON

Queensland State planning process

- 1 Site selection, initial concept and preliminary investigations
- 2 Pre-lodgement meeting with State Assessment and Referral Agency (SARA)

WE ARE HERE Studies and assessments (prescribed by SARA State Code 23)

- 4 Application and assessments submitted to SARA
- 5 *If required* - further information requested and further assessment
- 6 *If required* - public notification of proposal
- 7 Assessment
- 8 Determination

EPBC Act

WE ARE HERE Referral to the Federal Department of Agriculture, Water and the Environment for review under the *Environment Protection and Biodiversity Conservation Act 1999* (EPBC Act)

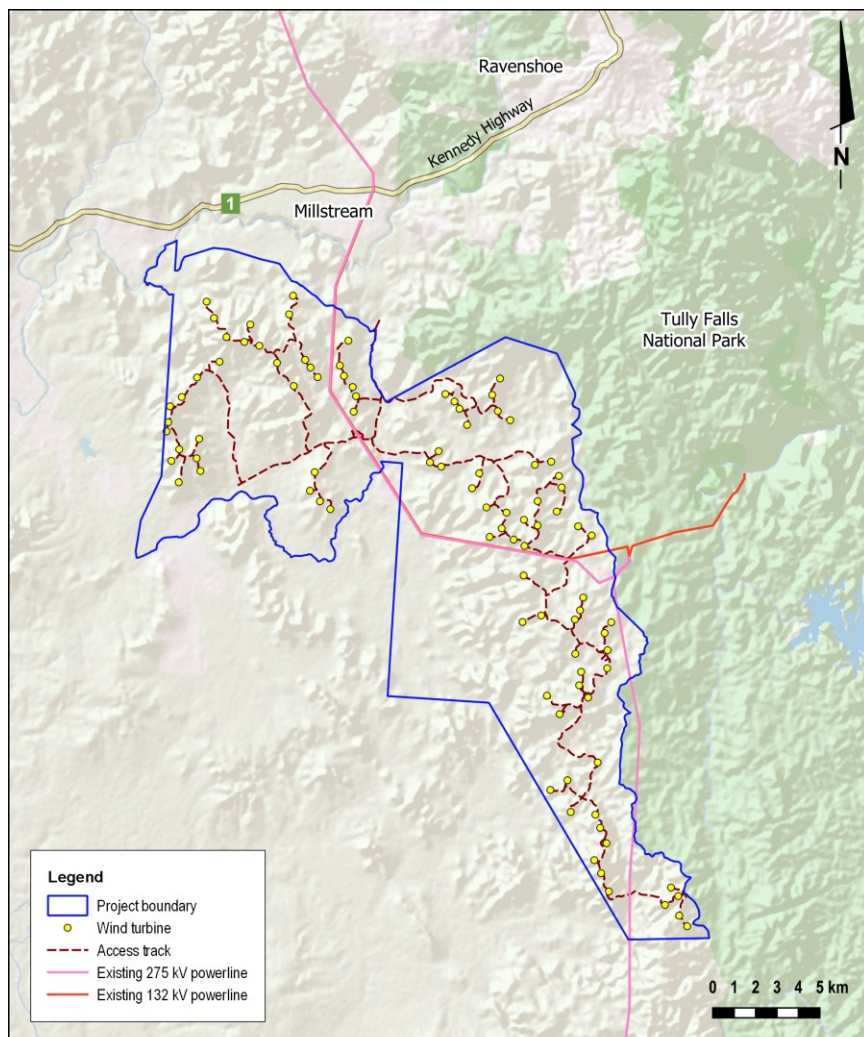
- 2 Referral decision
- 3 *If required: request for more information*
- 4 *If required: information provided*
- 5 Determination

Project contact

John Sadler
General Manager Development (Qld)
Email: j.sadler@epuron.com.au
Tel: 0427 801 371

Website: chalumbinwindfarm.com.au

Chalumbin Wind Farm proposed layout



Project benefits

Renewable sources of energy – wind, solar, hydro – are the most efficient and cheapest new sources of bulk energy generation.

Growth in Queensland’s renewable energy capacity will deliver cleaner, cheaper and reliable electricity to households and businesses, create new employment and economic opportunities for rural and regional communities, and support the Queensland Government’s target of 50% renewable energy generation by 2030.

The proposed Chalumbin Wind Farm would contribute up to 600 megawatts to the Queensland electricity grid, enough to potentially power up to 300,000 homes.

Local benefits of the project include up to 250 jobs during construction and 10 ongoing jobs during operation. The project would also contribute work for local contractors and a significant boost to the local economy and for surrounding retail and hospitality businesses over the two-year construction period.

Register for project updates

Epuron is keen to keep interested members of the local community and other stakeholders up to date on this project and provide opportunities for feedback.

Register at epuron.com.au/mailling-list-details to receive newsletters via email. If you would prefer to receive updates via mail please advise us of your preferred postal address (contact details left).

We respect your privacy and your details will only be used for this purpose.