



Liverpool Range Wind Farm

Project Update No 6 | December 2011

Merry Christmas from the Epuron Team

As we draw to the end of a busy year for the Liverpool Range Wind Farm project, the Epuron team would like to wish you and your family a very Merry Christmas. There is already much work planned for next year including continuation of the consultation program that will feed into finalisation of the projects' Environmental Assessment. Thank you for your continued support of this exciting project and your positive feedback.

Project Update

A key milestone since our previous update is that Epuron has received notification of the Director-General's Requirements (DGRs) for the project from the NSW Department of Planning in March 2011. The issuing of the DGRs is in response to our submission of the project's Development Application and Preliminary Environmental Assessment earlier in the year. The DGRs set out the Departments key assessment criteria for the proposed wind farm and will contribute to the preparation of the project's Environmental Assessment. There are a number of detailed studies required by the DGRs to assess potential impacts of the project including noise, visual, traffic, ecological, heritage and a range of planning and statutory matters.

Various studies are currently underway to assess the proposed powerline easement route as part of the ongoing development works to connect the Project to the existing grid. The preferred connection location is at Transgrid's existing 330kV Wollar-Wellington powerline located to the south of the site.

As we continue to capture data from the wind monitoring mast on site we remain confident there are good wind speeds across the project and a viable resource for the development of a wind farm. There are plans to further expand the wind monitoring program in the new year. This will see the placement of additional wind monitoring points including use of our new portable Sodar technology.

New Website

We are pleased to advise that a new project website will soon be available to view information about the project. You are also invited to submit any feedback you may have via the new website. The new website is due to be launched shortly so keep an eye out for it. Details of the project will be available at www.liverpoolrangewindfarm.com.au



Project Manager



Epuron is pleased to announce the recent appointment of Senior Project Manager Brian Hall as Project Manager for the

Liverpool Range Wind Farm. Brian brings a wealth of experience to the Epuron Team, having more than 20 years experience in the Australian and international energy industries.

Prior to joining Epuron in 2011, Brian held a number of senior roles in the renewable energy sector including head of Business Development in Australia with Meridian Energy and Director of Allco Wind Energy's global business. Brian was directly responsible for managing the development phase of the 420MW Macarthur Wind Farm in Victoria (largest in southern hemisphere at the time) that was committed to construction in 2010 under a Joint Venture with Meridian and AGL.

Please feel free to contact Brian if you have any queries or feedback regarding the Wind Farm.

Please send us your feedback

Write to us:



Liverpool Range Wind Farm
Level 11, 75 Miller Street
North Sydney NSW 2060

Email or Internet:



b.hall@epuron.com.au
www.epuron.com.au

Phone us:



02 8456 7400



Consultation Plan

Epuron is a leading developer of wind farms in NSW and has a proven track record with four previous wind farm project applications already successfully approved. To date Epuron has achieved approval of the largest wind farm, the largest number of wind farms, and the largest number of wind turbines in NSW, making it one of the most experienced wind developers in Australia. As such Epuron considers community consultation and engagement with key stakeholders a vital part of the approval process and an important first step towards becoming a long term member of the community.

Recently Epuron has updated its corporate Consultation Framework for the development of wind farms. A project specific Consultation Plan has commenced for the Liverpool Range Wind Farm and incorporates the following high level objectives:

- Ensure the community is fully informed about the proposal, its likely impacts and benefits;
- Provide the community with sufficient notice and opportunity regarding upcoming events such as Open House days and exhibition periods;
- Provide multiple opportunities for dialogue and provision of feedback;
- Incorporation of feedback into the design where possible and demonstration where this has been achieved;
- Building positive trust based relationships with community and key stakeholders;
- Establish a Community Consultation Committee to actively engage with and provide a forum for wider community groups and Council to have their say.

The NSW Wind Farm Planning Guidelines are expected to be issued soon, and our Consultation Plan will be further refined and updated to reflect any additional requirements .

New “Sodar” Technology for Wind Measurement

To confirm the viability of wind projects in NSW, Epuron has established an extensive network of wind monitoring masts. Data from this network plus the onsite masts confirms that wind speeds are good at Liverpool Range Wind Farm and more than sufficient for a viable wind farm. As the Liverpool Range wind farm site is large and to get a better understanding of the wind speed variations in the area, Epuron is planning to utilise its new “Sodar” technology. Sodar stands for “Sound Detection and Ranging” and is a small ground-mounted unit that can capture all the information available from a conventional wind monitoring mast. The Sodar we are using is designed and made in Australia for Australian conditions.

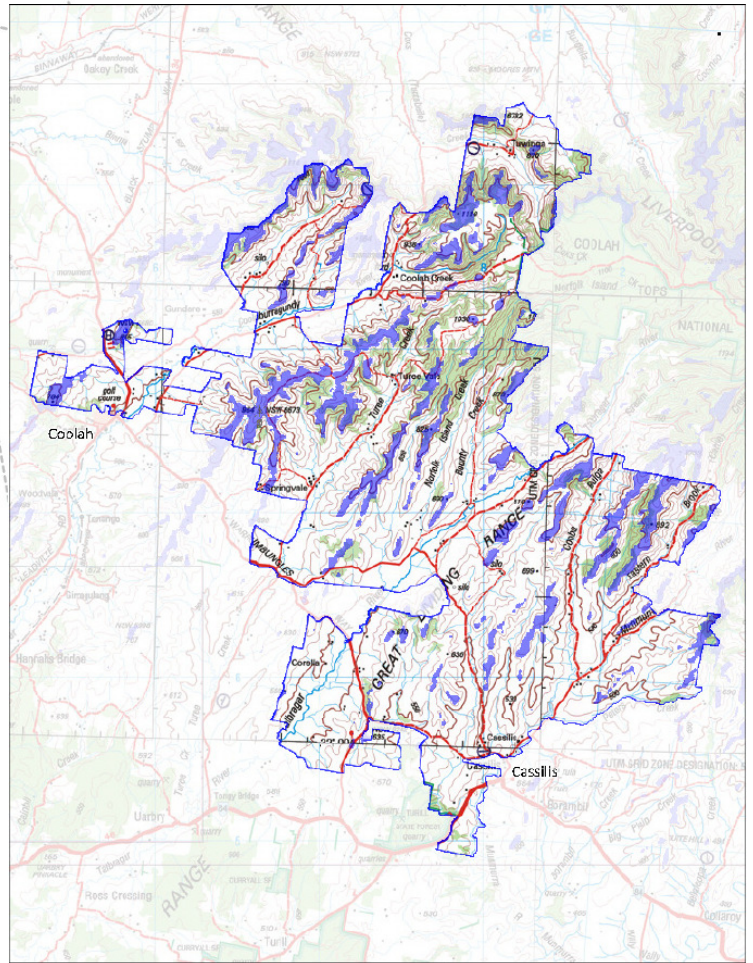


Figure 1. Preliminary Turbine Development Area



Figure 2. Epuron's new Sodar technology