

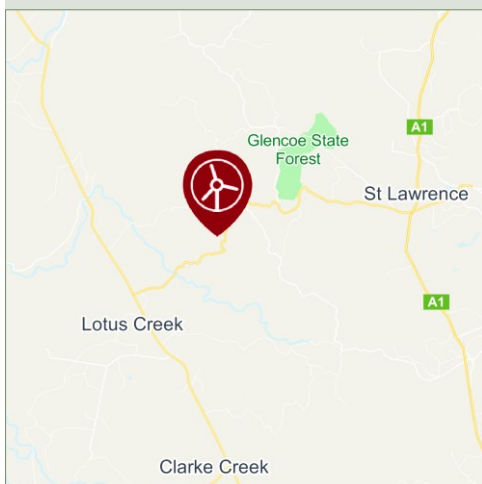
# Lotus Creek Wind Farm

Project Update

February 2021



## Location



The site is approximately 20km west of St Lawrence and 175km north-west of Rockhampton in Queensland's central west.

## Community input

We are keen to engage widely with the local community and welcome input from nearby residents and other interested parties, to help us understand any concerns and where possible shape the project to provide the greatest benefit.

Please see overleaf for how to register for project updates. An online feedback form is also available on the project website: [lotuscreekwindfarm.com.au](https://lotuscreekwindfarm.com.au)

## New design

In June 2020 the Federal Department of Agriculture, Water and the Environment found the initial design for the Lotus Creek Wind Farm unacceptable under the Commonwealth *Environment Protection and Biodiversity Conservation Act 1999* (EPBC Act). Following this decision Epuron spent six months commissioning further site investigations, assessing the findings with independent ecology consultants and redesigning the proposed wind turbine layout.

The new proposal was referred to the Department in December 2020. It reduces the number of turbines by almost a third, from 81 to 55, and the size of the project area by more than 40%. For a map of the new turbine layout **please see overleaf**.

The new design avoids priority habitat areas for koalas and greater gliders and requires minimal clearing. Epuron's revised proposal also includes a raft of measures to improve conservation efforts on the project site including monitoring local wildlife and sharing research data, providing funds to support koala conservation and supporting host landowners to improve koala habitat, control predators and maintain best practice fire management.

With the new design and commitments the project can achieve a net positive outcome for biodiversity in the project site including an increase in the size and quality of koala habitat and a reduction in bushfire risk.

The Department has deemed the new design to be a 'controlled action' which means that the application will require controlling provisions for key species and the proposal will be subject to assessment and approval under the EPBC Act.

The project's EPBC Act referral decision (reference number 2020/8867) is available on the EPBC Act Public notices portal: [epbcnotices.environment.gov.au/publicnoticesreferrals/](https://epbcnotices.environment.gov.au/publicnoticesreferrals/)

## Respecting the site's Traditional Custodians

Epuron recognises the continuing connection that Aboriginal and Torres Strait Islander people have to their land and acknowledges that the Lotus Creek Wind Farm project area is Barada Barna People and Barada Kabalbara Yetimarala People country.

Lotus Creek Wind Farm is working with the site's Traditional Custodians to establish agreements that ensure respect to traditional values and culture are upheld.

An Indigenous Land Use Agreement has been agreed with the Barada Barna native title party. The signing ceremony was held between Barada Barna and the Lotus Creek Wind Farm project team in February 2020.

The project team is also working to establish agreements with Barada Kabalbara Yetimarala.

Epuron looks forward to ongoing positive working relationships with the site's Traditional Custodians as important stakeholders of the project.



Barada Barna and the Lotus Creek Wind Farm project team sign their Indigenous Land Use Agreement.

## Powering Queensland

The Queensland Government's Powering Queensland Plan outlines the government's commitment to transition the state to a cleaner energy sector, creating new investment and jobs.

For more information visit:

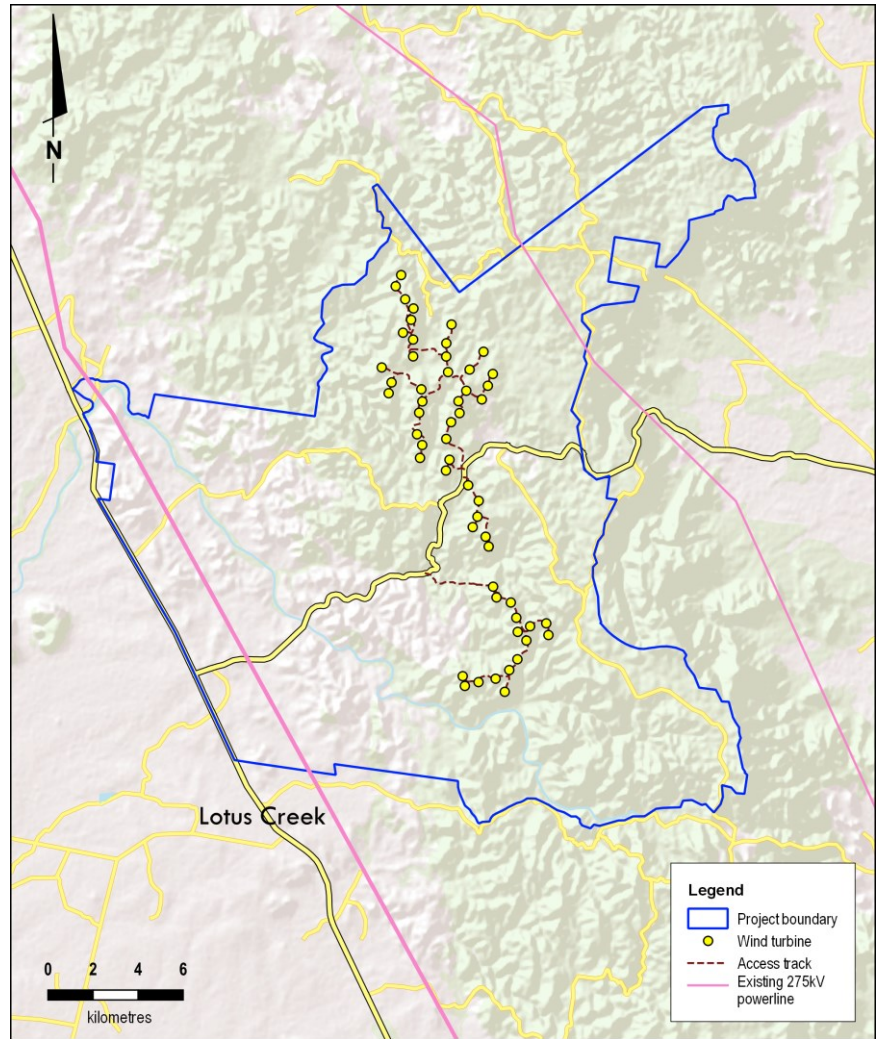
[www.epw.qld.gov.au/about/initiatives/powering-queensland](http://www.epw.qld.gov.au/about/initiatives/powering-queensland)

## Project contact

[lotuscreekwindfarm.com.au](http://lotuscreekwindfarm.com.au)

Jessica Picton, Project Manager  
Lotus Creek Wind Farm  
Email: [j.picton@epuron.com.au](mailto:j.picton@epuron.com.au)  
Tel: 0423 669 422

## Lotus Creek Wind Farm - proposed layout



Epuron is proposing a layout of 55 wind turbines and to connect the project via a new substation to the onsite high voltage 275 kV Nebo to Broadsound powerlines.

## Future of energy

Renewable sources of energy – wind, solar, hydro – are the most efficient and cheapest new sources of bulk electricity generation. The Lotus Creek Wind Farm proposes to provide a valuable contribution to Queensland's energy mix and feed more clean renewable power into the network, in a way that is complementary to the land's current use of cattle farming.

Growth in Queensland's renewable energy capacity will deliver cheaper, cleaner and reliable electricity to households and businesses, and support the Queensland Government's target of 50% renewable energy generation by 2030.

## Register for project updates

Epuron is keen to keep interested members of nearby communities up to date on project developments and opportunities to provide feedback.

To receive updates via email please register online at [epuron.com.au/mailing-list-details](http://epuron.com.au/mailing-list-details). Alternatively, if you would prefer to receive updates via mail please provide your preferred postal address to the project team (left). We respect your privacy and your personal details will only be used for this purpose.

An online feedback form and project updates are also available on the project website at [lotuscreekwindfarm.com.au](http://lotuscreekwindfarm.com.au)