

St Patricks Plains Wind Farm

Project Update

February 2021



Location



For details of this site in the Central Highlands please see overleaf.

About Epuron

Epuron is an Australian-owned renewable energy company based in Sydney, NSW. It has been working for a number of years on the St Patricks Plains Wind Farm project, located south of Miena and north of Bothwell on the Highland Lakes Road.

For more information on the St Patricks Plains Wind Farm please visit the website: stpatricksplainswindfarm.com.au

Community information days rescheduled to 12 & 13 February

Following the lifting of travel restrictions for all of Greater Sydney on Sunday 31 January, the project team has been busy rescheduling and we are pleased to confirm the following local information days:

Bothwell – 4-7pm, Friday, 12 February

Club Rooms, Bothwell Recreation Ground, 26 Hollow Tree Road

Miena – 3-6pm, Saturday, 13 February

Great Lake Community Centre, 55-57 Cider Gum Road

Note: Marshall Day Acoustics will also be available at this session to answer questions about noise assessment.

If you would like to attend one of these days please let us know, details below. For those who are unable to attend one of the above dates we are still offering two online information sessions, on 9 and 11 February. These will be held via Zoom and can be booked online through trybooking.com/eventlist/spp

After the local events we are also happy to schedule additional online sessions if required to ensure everyone has the opportunity to discuss the revised layout (map overleaf) with the project team.

We appreciate the Tasmanian Government's approach to keeping everyone safe and thank you for your patience and understanding.

If Tasmania's border entry conditions change before 11 February and the project team is prevented from visiting the area we will reschedule the local information days again. Please check the 'News' section of stpatricksplainswindfarm.com.au the day before for any updates or coronavirus.tas.gov.au for the latest travel advice.

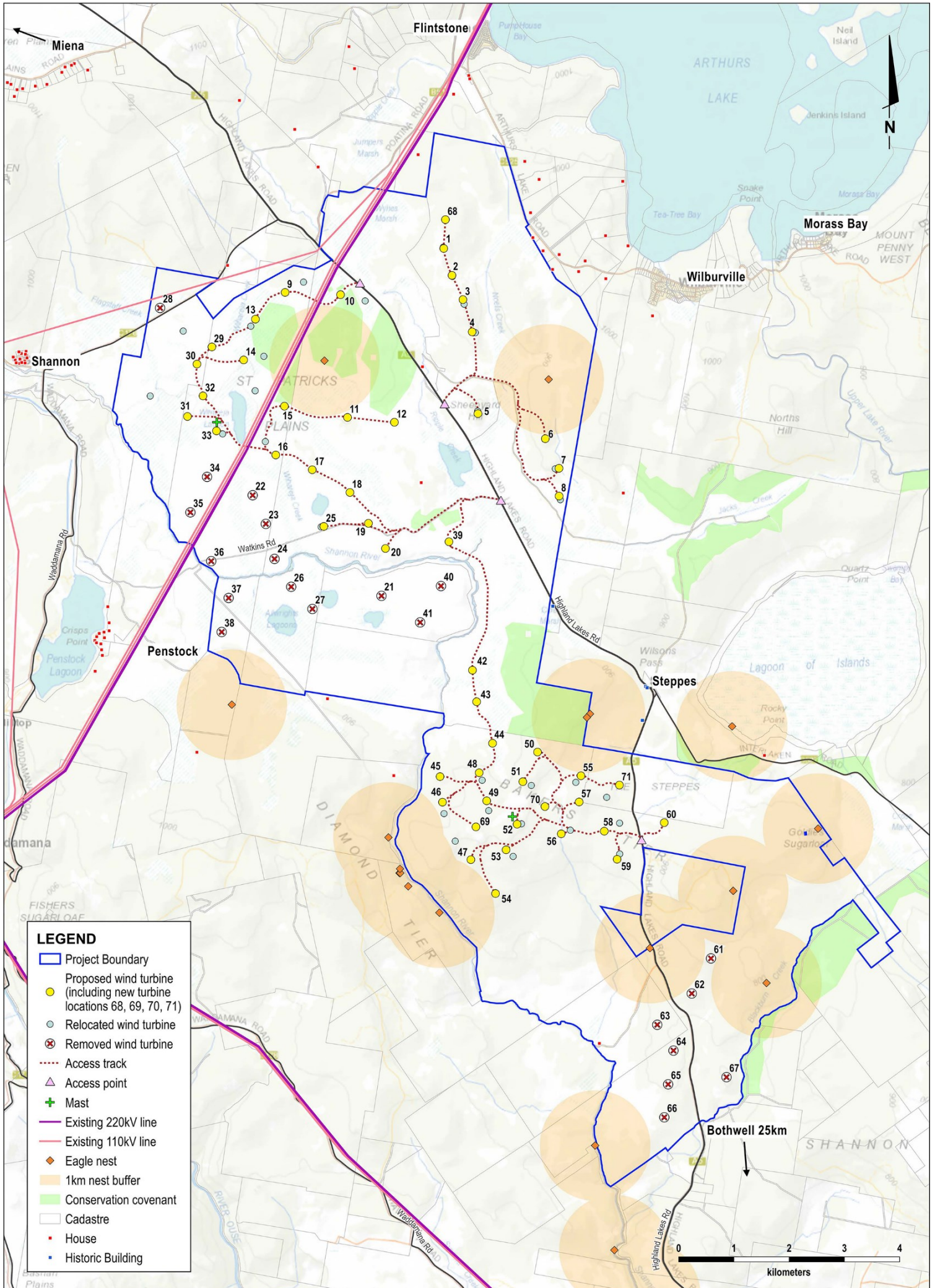
Donna Bolton
Senior Project Manager
Email: d.bolton@epuron.com.au
Tel: 0405 535 325

Sandra Weinhold
Project Manager
Email: s.weinhold@epuron.com.au
Tel: 0412 833 657



EPURON

St Patricks Plains Wind Farm Updated Layout, January 2021



LEGEND

- ▭ Project Boundary
- Proposed wind turbine (including new turbine locations 68, 69, 70, 71)
- Relocated wind turbine
- ⊗ Removed wind turbine
- ⋯ Access track
- ▲ Access point
- + Mast
- Existing 220kV line
- Existing 110kV line
- ◆ Eagle nest
- 1km nest buffer
- Conservation covenant
- Cadastre
- House
- Historic Building