

St Patricks Plains Wind Farm

Project Update

January 2021



Location



For details of this site in the Central Highlands of Tasmania see overleaf.

About Epuron

Epuron is an Australian-owned renewable energy company based in Sydney, NSW. It has been working for a number of years on the St Patricks Plains Wind Farm project, located south of Miena and north of Bothwell on the Highland Lakes Road.

For more information on the St Patricks Plains Wind Farm please visit the website:

stpatricksplainswindfarm.com.au

Revised layout

After a full year of on-site surveys and community engagement Epuron has updated the layout of the proposed wind farm. These changes avoid and minimise interactions with eagles and other fauna and flora, as well as address feedback and concerns raised by the community and visitors.

The revised layout involves 50 wind turbines. Twenty-one wind turbines from the earlier 67 turbine layout have been removed, and four new locations have been added.

In this latest layout turbine locations are no closer than three kilometres from the communities of Wilburville, Flintstone, Shannon and Penstock.

A map showing the revised layout including removed, relocated and new wind turbine locations is **overleaf**.

You are invited to attend one or both of the following information days scheduled to update the community, and answer questions about the status of the project and the updated layout:

Bothwell – 4-7pm, Friday, 29 January

Club Rooms, Bothwell Recreation Ground
26 Hollow Tree Road, Bothwell.

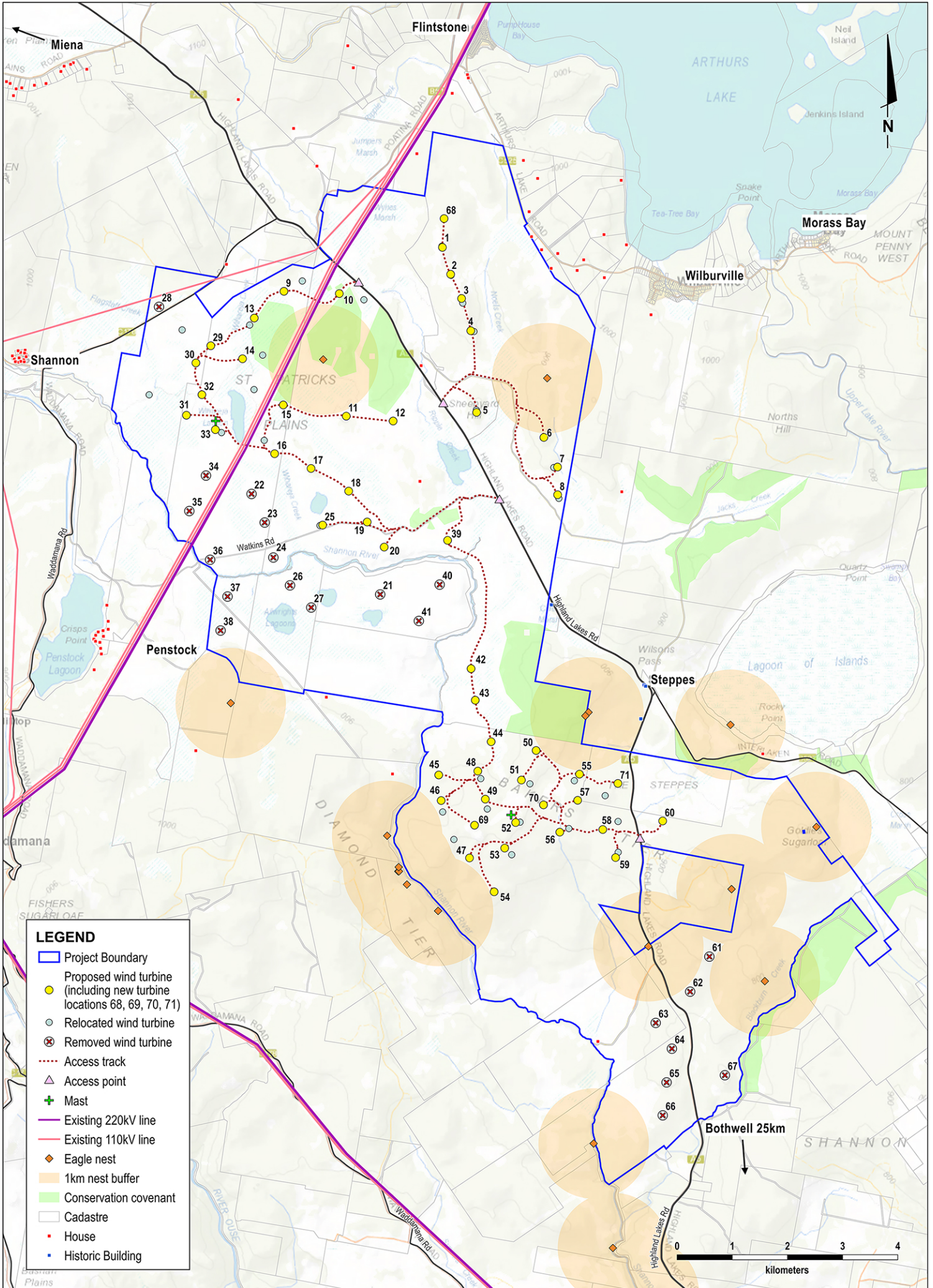
Miena – 3-6pm, Saturday, 30 January

Great Lake Community Centre
55-57 Cider Gum Road, Miena.

Important note: the above sessions will be cancelled if the project team is unable to visit due to travel restrictions.

RSVP required - If you wish to attend one of the above sessions please reply by Wednesday 27 January (our contact details are on the last page) and provide your email address or phone number. If the Epuron team cannot travel from Sydney to Tasmania both these sessions will be cancelled. In the event of cancellation you will be contacted by phone or email and provided with options for alternative discussion opportunities. Please see last page for further details.

St Patricks Plains Wind Farm Updated Layout, January 2021



- LEGEND**
- ▭ Project Boundary
 - Proposed wind turbine (including new turbine locations 68, 69, 70, 71)
 - Relocated wind turbine
 - ⊗ Removed wind turbine
 - ⋯ Access track
 - ▲ Access point
 - + Mast
 - Existing 220kV line
 - Existing 110kV line
 - Eagle nest
 - 1km nest buffer
 - Conservation covenant
 - ▭ Cadastre
 - House
 - Historic Building

0 1 2 3 4
kilometers

State planning process

- 1 Site selection and preliminary investigations
- 2 Referral for review under the Commonwealth EPBC Act
- 3 EPBC Act referral decision: controlled action
- 4 Notice of Intent (NOI) lodged with the Environment Protection Authority (EPA) Tasmania
- 5 Project Specific Guidelines for the Environmental Impact Statement (EIS) issued by the EPA

WE
ARE
HERE

Studies, assessments,
revising and finalising site
design

- 7 Development application (DA) and EIS submitted to Central Highlands Council
- 8 Preliminary assessment by Council
- 9 DA and EIS referred by Council to the EPA
- 10 DA and EIS on exhibition for public submissions
- 11 Responses to public submissions
- 12 Assessment by the EPA Board
- 13 Determination by the EPA Board and approval conditions provided to Council and the Department of Agriculture, Water and the Environment (DAWE)
- 14 Determination by DAWE
- 15 Assessment by Council
- 16 Determination by Council

Alternative plans if the Bothwell and Miena information days are cancelled

We will contact everyone who has replied so we can make alternative arrangements, with the following options:

Online information sessions – For those with internet access, online sessions will be offered via Zoom. Zoom is free to use and can be accessed from any internet-connected device. A range of dates and times will be offered.

Telephone calls – If you don't have internet that's not a problem, we will call you to arrange a time to talk with you directly.

Information days – We will reschedule the face-to-face information days in Bothwell and Miena when possible, after travel restrictions are lifted.

If you have any questions or would like to reply to attend an information session please call or email the project team:

Donna Bolton
Senior Project Manager
Email: d.bolton@epuron.com.au
Tel: 0405 535 325

Sandra Weinhold
Project Manager
Email: s.weinhold@epuron.com.au
Tel: 0412 833 657

Next steps for the project

Please see the column on the left for the status of the project and the next steps in the planning process.

The site surveys required by the Project Specific Guidelines are due to be completed in the first half of this year. Following analysis of the full two years of data collected the wind farm layout will be further updated and revised as required.

It is anticipated that the Environmental Impact Statement (EIS) will be finalised and lodged with the Environment Protection Authority (EPA) Tasmania in the second half of 2021 and placed on public exhibition by the EPA at the end of the year.

Thank you for engaging with us

We thank the community for engaging with us on this project. We have received much positive and constructive feedback and we have listened to the concerns raised. Where possible we have responded to feedback and concerns. We are still listening and remain open to receiving your comments, concerns and suggestions.

Register for project news

To receive project news via email please register at epuron.com.au/mailling-list-details. To receive project news via mail please contact the project team (above) and advise your preferred mailing address. We respect your privacy and your details will only be used for this purpose.

You can also provide feedback on the project via the online form available at stpatricksplainswindfarm.com.au.