

Specimen Hill Wind Farm

Project Introduction

November 2020



Location



About Epuron

Epuron is a leading Australian-owned renewable energy developer specialising in wind and utility-scale solar projects.

Founded in 2003 and based in Sydney NSW, the company has been involved in developing more than 20 renewable energy projects around Australia.

Completed projects now in operation include White Rock Wind Farm, Gullen Range Wind Farm and Silvertown Wind Farm in NSW, and utility-scale solar farms in Clermont (QLD), Nevertire (NSW) and Katherine (NT).

For more information on Epuron's experience and current projects please visit epuron.com.au

Harnessing the wind

Australian renewable energy developer Epuron is investigating an area approximately 25km north-east of Biloela in central Queensland as a potential site for a wind farm.

The site seems particularly suitable for wind energy generation because:

- there is a strong wind resource
- it is close to existing high voltage transmission lines
- there is good road transport access
- it is away from populated areas, reducing the likelihood of amenity impacts.

On-site studies and wind monitoring are underway, and Epuron is liaising with landowners and the Queensland Government to determine planning assessment requirements for the project, called Specimen Hill Wind Farm.

Epuron has established an Indigenous Land Use Agreement (ILUA) for the site area with the First Nations Bailai, Gurang, Gooreng Gooreng, Taribelang Bunda People and a Cultural Heritage Management Agreement (CHMA) with the Gaangalu Nation People. The company is also referring the proposal to the Federal Department of Agriculture, Water and the Environment for review under the Commonwealth *Environment Protection and Biodiversity Conservation Act 1999* (EPBC Act).

After assessment requirements have been determined, Epuron will undertake further surveys and work to optimise the project's design in preparation for submitting a development application to the Queensland Government's State Assessment and Referral Agency (SARA), which is coordinating assessment of the project.

For a map of the site investigation area and the project's status in the planning process **please see overleaf**.

In addition to contributing direct economic benefits to the local region, with a proposed 50-60 turbines the potential generating capacity of the project is up to 360 megawatts (MW).

For more information visit specimenhillwindfarm.com.au

EPURON

State planning process

- 1 Site selection, initial concept and preliminary investigations
- 2 Pre-lodgement meeting with State Assessment and Referral Agency (SARA)

WE
ARE
HERE

Studies and assessments
(prescribed by SARA State
Code 23)

- 4 Application and assessments submitted to SARA
- 5 *If required* - further information requested and further assessment
- 6 *If required* - public notification of proposal
- 7 Assessment
- 8 Determination

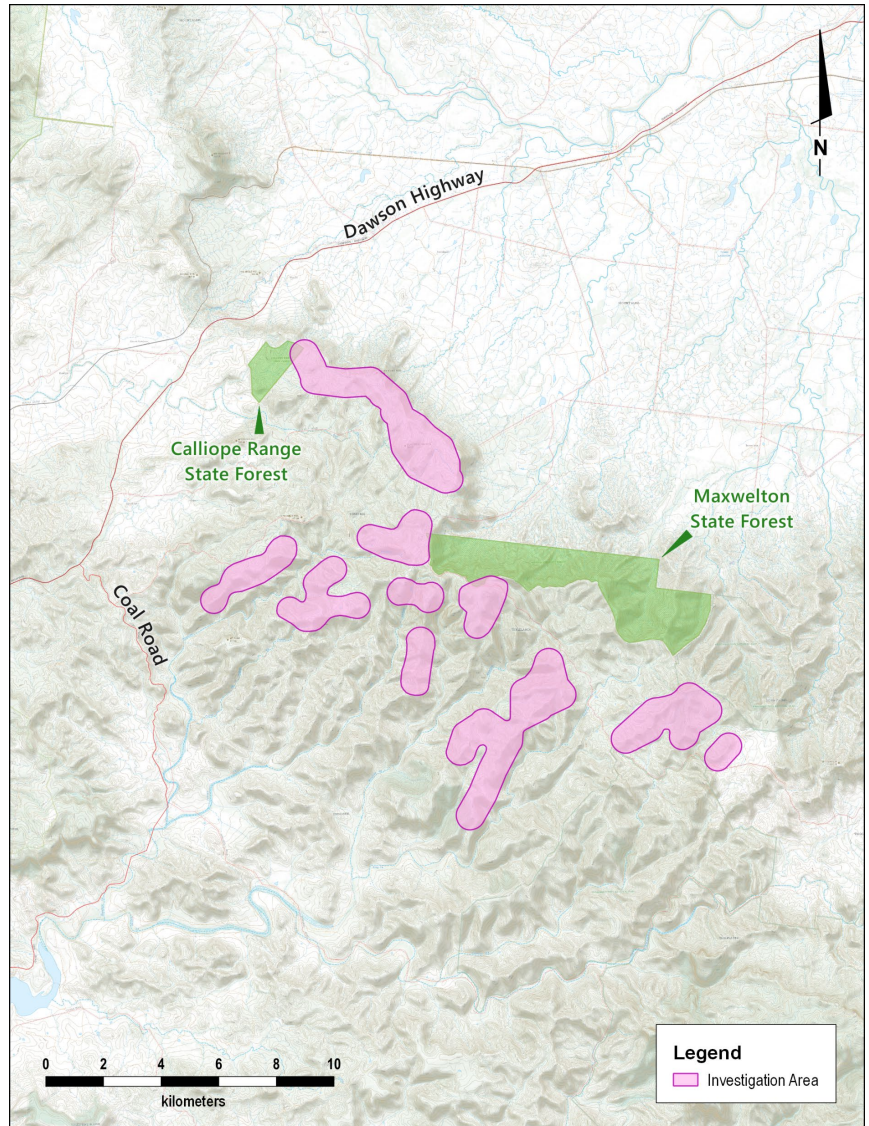
EPBC Act

WE
ARE
HERE

Referral to the Department
of Agriculture, Water and
the Environment for
review under the EPBC Act

- 2 Referral decision
- 3 *If required: request for more information*
- 4 *If required: information provided*
- 5 Determination

Specimen Hill Wind Farm investigation area



Why clean energy?

Renewable sources of energy – wind, solar, hydro – are the most efficient and cheapest new sources of bulk energy generation.

Growth in Queensland's renewable energy capacity will deliver cleaner, cheaper and reliable electricity to households and businesses, and support the Queensland Government's target of 50% renewable energy generation by 2030.

Last year renewables contributed 14% of Queensland's electricity, and by the end of 2020 it is estimated they will account for 30% of Australia's total energy mix.

Register for project updates

Epuron is keen to keep interested members of the local community and other stakeholders up to date on project developments and opportunities to provide feedback. To receive updates via email please register your details at epuron.com.au/mailling-list-details. Alternatively, to receive updates via mail please provide your preferred postal address to the project team (left). We respect your privacy and your personal details will only be used for this purpose.

An online feedback form and project updates are also available on the project website at specimenhillwindfarm.com.au

Contact

For more information please visit
specimenhillwindfarm.com.au

Project manager:
Paul Stangroom, General Manager (Qld)
Email: p.stangroom@epuron.com.au
Tel: (02) 8456 7401