

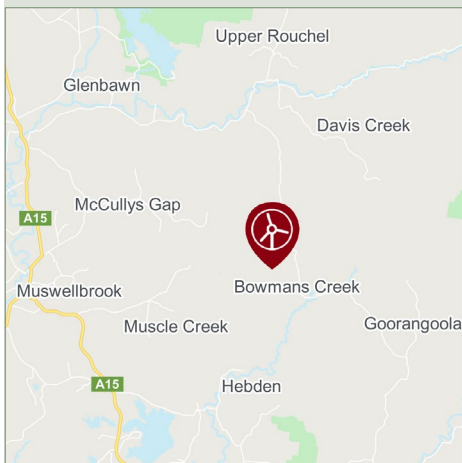
Bowmans Creek Wind Farm

Project Update

December 2020



Location



Local information session in early 2021

The project's Environmental Impact Statement (EIS) is due to be lodged soon and once a date has been set by the NSW Department of Planning, Industry and Environment for the exhibition period a project update will be issued with details for how to access the EIS and a local information session.

If you would like to register early interest for this session and be notified directly as soon as it is scheduled please contact the project team – details overleaf.

EIS to be lodged soon

Following completion of studies for the project's Environmental Impact Statement (EIS), partly delayed due to COVID, the project team has been consulting with key stakeholders to further refine the overall design of the project. The EIS is due to be lodged soon, after which the NSW Department of Planning, Industry and Environment (DPIE) will review it and put it on public exhibition, likely in early 2021.

What is an Environmental Impact Statement (EIS)?

In NSW State significant development applications (DA) must be accompanied by an Environmental Impact Statement (EIS), prepared in accordance with the Planning Secretary's environmental assessment requirements (SEARs). The purpose of the EIS is to assess the economic, environmental and social impacts of the project to help the community, government agencies and the consent authority make informed submissions or decisions on the merits of the project.

The planning status of State significant developments and associated documents are available on the NSW Planning Portal for Major Projects. Search 'Bowmans Creek Wind Farm' at: www.planningportal.nsw.gov.au/major-projects/projects

Layout revision

Based on findings from specialist studies and extensive community consultation the initial proposed layout for the project has been redesigned and reduced from 72 to 60 turbines. For a map showing the new proposed layout to be submitted with the EIS please see overleaf.

In July the project team conducted online community information sessions to share the new layout, outline the specialist assessments being done, address other considerations and outline the local benefits of the project. Matters discussed included visual impacts, noise, biodiversity, cultural heritage, transportation, property values and bushfire management. The full presentation is available to download from the 'News' section of the project website.

For more information visit bowmanscreekwindfarm.com.au

NSW planning process

The proposed Bowmans Creek Wind Farm is considered State significant development and subject to a rigorous planning process managed by the NSW Government. The key steps and status of the project are listed below.

- 1 Site selection
- 2 Initial concept and consultation
- 3 Scoping Report submitted to the NSW Department of Planning, Industry and Environment (DPIE)
- 4 Secretary's Environmental Assessment Requirements (SEARs) for the Environmental Impact Statement (EIS) issued by DPIE

WE
ARE
HERE

Studies, assessments,
finalising site design

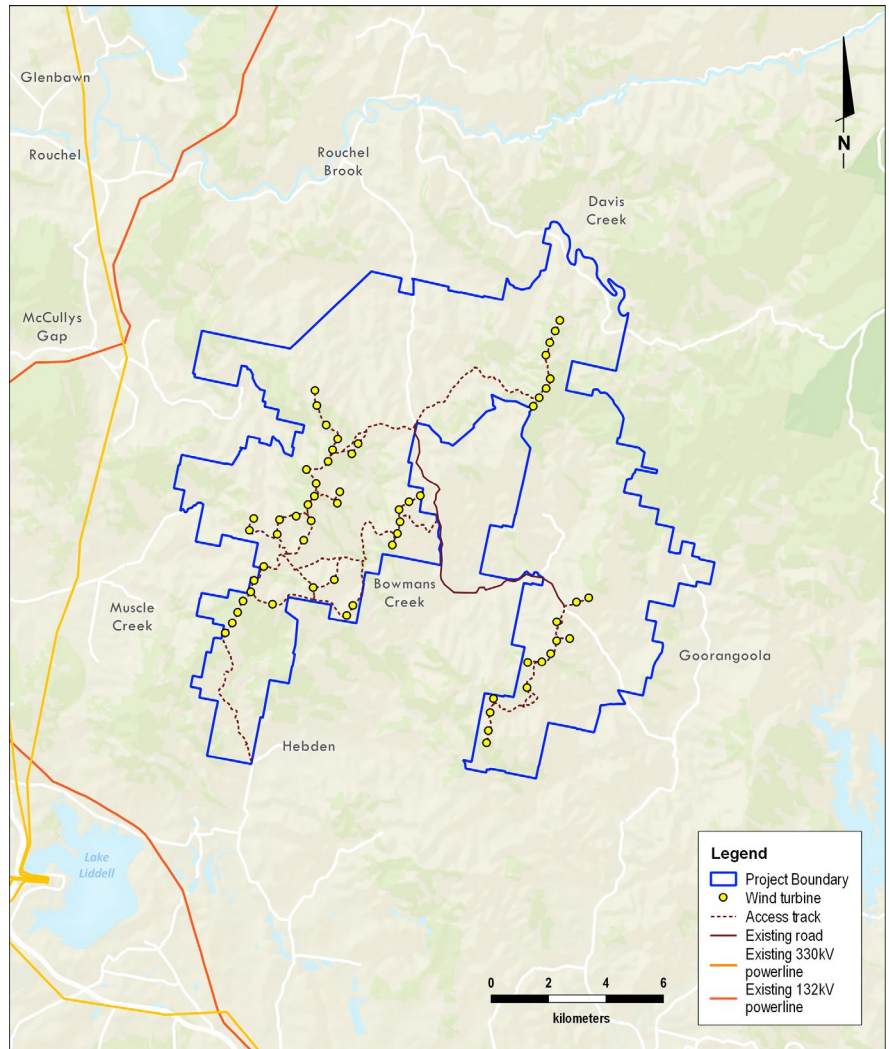
- 6 Development application (DA) and EIS lodged with DPIE
- 7 EIS on exhibition for public submissions
- 8 Responses to public submissions
- 9 Assessment by DPIE
- 10 Determination

Contact

Julian Kasby
Project Manager
Email: j.kasby@epuron.com.au
Tel: (02) 8456 7404

Register to receive project news by email
at epuron.com.au/mailling-list-details

Bowmans Creek Wind Farm proposed layout



Hunter region key for renewables

Renewable sources of energy - wind, solar, hydro - are the most efficient and cheapest new sources of bulk energy generation, and by the end of 2020 are expected to account for 30% of Australia's total energy mix.

The Hunter is an important source of energy generation for NSW. As coal-fired power stations age, the area's natural resources mean it is well placed to continue this tradition into the future with the development of renewable energy projects. Bowmans Creek was selected as a suitable location for a wind farm because of the area's high wind speeds and close proximity to the high voltage transmission network.

The NSW Government is committed to transforming the Hunter region into a renewable energy hub as part of its plans to transition the state's grid from coal to renewables. In November 2020 it passed the NSW Electricity Infrastructure Investment Bill, supporting its Electricity Infrastructure Roadmap for the state's clean energy transition.

The bill identifies the Hunter-Central Coast region as one of the state's key Renewable Energy Zones. The plan aims to attract \$32 billion in investment from the private sector and create 9,000 jobs to deliver 12 gigawatts (GW) of new renewable capacity by 2030 and put NSW in the top 10 for the lowest industrial electricity prices in the OECD.