

Guildford Wind Farm

Project Update

November 2020



Location



Community consultation

Epuron welcomes input from members of the local community and other interested parties, to help identify key community priorities and shape the project.

Consultation throughout the process will include updates, meetings and information sessions. Subject to COVID-19 restrictions, the project team aims to hold an information session in the local area in early 2021.

Please see overleaf for how to register your details to receive updates and notification of information sessions when these are scheduled.

Planning process begins

The planning process for the proposed Guildford Wind Farm, located approximately 7km north east of Waratah and 15km south of Hampshire, has been started by Epuron, an Australian-owned renewable energy developer based in Sydney, NSW.

A Notice of Intent (NOI) for the project, with an initial proposed layout of 80 turbines (see map overleaf), has been lodged with the Environment Protection Authority (EPA) Tasmania. The EPA will use this to determine the class of assessment and Project Specific Guidelines (PSGs) for the project's Environmental Impact Statement (EIS). When the draft guidelines are ready, they will be put on public exhibition through the EPA's website.

Epuron also referred the project to the Federal Department of Agriculture, Water and the Environment (DAWE) for review under the Commonwealth *Environment Protection and Biodiversity Conservation Act 1999* (EPBC Act), and DAWE has determined it to be a 'controlled action'. This prescribes a number of studies for inclusion in the EIS and means the project will also require approval under the EPBC Act.

Find documents online

The NOI and PSGs will be put on exhibition on EPA Tasmania's assessment portal: epa.tas.gov.au/assessment/assessments

The project's EPBC Act referral and decision is available on the EPBC Act public notices portal, reference number 2020/8797: epbnotices.environment.gov.au/publicnoticesreferrals

After the final guidelines are issued, Epuron will commence work on the various technical reports required for the EIS. This will include comprehensive surveys and studies for biodiversity, visual, noise and transport matters. EIS assessments typically take at least two years. Over that time the project team will also refine the turbine layout based on study findings and community feedback.

For more information visit guildfordwindfarm.com.au

EPURON

Planning process

- 1 Site selection and preliminary investigations
- 2 Referral for review under the Commonwealth EPBC Act
- 3 EPBC Act referral decision: controlled action

WE
ARE
HERE

Notice of Intent (NOI) lodged with the Environment Protection Authority (EPA) Tasmania

- 5 Project Specific Guidelines for the Environmental Impact Statement (EIS) issued by the EPA

- 6 Site design, studies and assessments

- 7 Development application (DA) and EIS submitted to Waratah Wynyard Council

- 8 Preliminary assessment by council

- 9 DA and EIS referred by council to the EPA

- 10 DA and EIS on exhibition for public submissions

- 11 Responses to public submissions (if required)

- 12 Assessment by the EPA Board

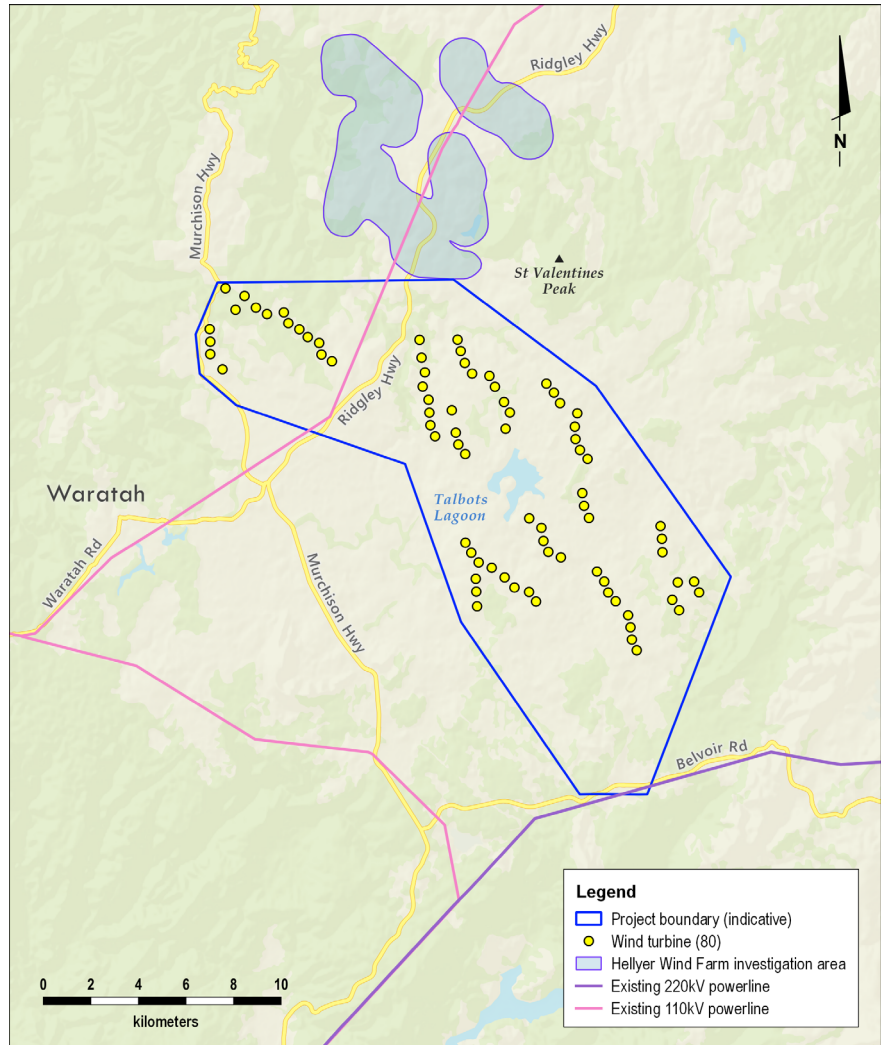
- 13 Determination by the EPA Board and approval conditions provided to council and the Department of Agriculture, Water and the Environment (DAWE)

- 14 Determination by DAWE

- 15 Assessment by council

- 16 Determination by council

Guildford Wind Farm proposed initial layout



The map shows the proposed layout of 80 turbines, and the nearby investigation area for another Epuron project, the proposed Hellyer Wind Farm: hellyerwindfarm.com.au

Why clean energy?

Renewable sources of energy – wind, solar, hydro – are the most efficient and cheapest new sources of bulk energy generation. Growth in Tasmania’s renewable energy capacity will deliver cheaper reliable electricity to Tasmanian households and businesses, support the Tasmanian Government’s renewable energy target of 200% by 2040, and contribute significantly to the necessary transition of Australia’s energy market to clean energy.

By the end of 2020 it is estimated that renewable energy generation will account for 30% of Australia’s total energy mix.

Register for project news

We are keen to keep members of the local community and other interested parties up to date on project developments and opportunities to provide feedback.

If you would like to receive project news via email please register at epuron.com.au/mailling-list-details. If you would prefer to receive this via mail please contact the project team (left) and advise your preferred mailing address.

We respect your privacy and your details will only be used for this purpose.

Contact

Sandra Weinhold, Project Manager
Email: s.weinhold@epuron.com.au
Tel: 0412 833 657

Donna Bolton, Snr Project Manager
Email: d.bolton@epuron.com.au
Tel: 0405 535 325