

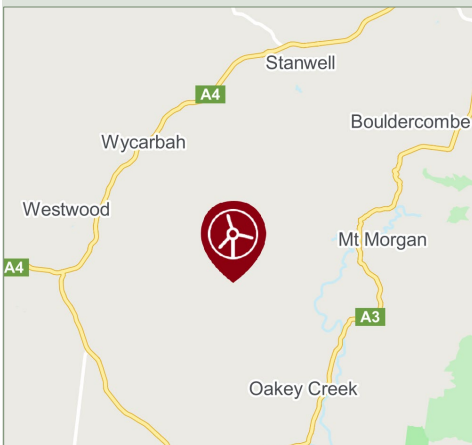
Boulder Creek Wind Farm

Project Introduction

September 2020



Location



Community consultation

Epuron welcomes input from members of the local community and other interested parties, to help identify key priorities and shape the project.

Consultation throughout the process will include updates, meetings and information sessions.

In the event that meetings or information sessions cannot be held locally due to travel or distancing restrictions, they will be held online.

Please see overleaf for how to register your details to receive updates and notification of information sessions when these are scheduled.

Harnessing the wind

Australian renewable energy developer Epuron is investigating an area 40km south west of Rockhampton and 5km west of Mount Morgan in central Queensland as a potential site for a wind farm.

The site seems particularly suitable for a wind farm because:

- there is a strong wind resource
- it is close to existing high voltage transmission lines
- there is good road transport access
- it is away from populated areas, reducing the likelihood of amenity impacts.

On-site studies, surveys and wind monitoring are underway, and Epuron is liaising with landowners and the Queensland Government to determine planning assessment requirements. Epuron has also referred the proposed project, called Boulder Creek Wind Farm, to the Federal Department of the Environment under the *Environment Protection and Biodiversity Conservation Act 1999* (EPBC Act) for guidance on possible impacts to the local natural environment.

For a map showing the site investigation area **please see overleaf**.

After requirements have been determined, the planning and assessment process will take place over the next 12 months. This will include further surveys and work to optimise the project's design. Throughout the process updates will be provided to the local community, other interested parties and online at boulder creek wind farm.com.au.

The Boulder Creek Wind Farm would contribute a long-term and low cost source of electricity to the Queensland grid, and support the Queensland Government's integrated energy plan and target of 50% renewable energy generation by 2030.

In addition to contributing direct economic benefits to the local region, with a proposed 50-65 turbines the potential generating capacity of the project is up to 360 megawatts (MW). This is equivalent to the power required to supply around 170,000 Queensland homes.

For more information visit boulder creek wind farm.com.au

EPURON

EPURON

Epuron is a leading Australian-owned renewable energy developer specialising in wind and utility-scale solar projects.

Founded in 2003 and based in Sydney NSW, the company has been involved in developing more than 20 renewable energy projects around Australia.

Completed projects now in operation include White Rock Wind Farm, Gullen Range Wind Farm and Silverton Wind Farm in NSW, and utility-scale solar farms in Clermont (QLD), Nevertire (NSW) and Katherine (NT).

For more information on Epuron's experience and projects please visit epuron.com.au



White Rock Wind Farm NSW



Gullen Range Wind Farm NSW

Powering Queensland

The Queensland Government's Powering Queensland Plan addresses the state's energy needs and outlines the government's commitment to transition to a cleaner energy sector, creating new investment and jobs.

For more information visit:

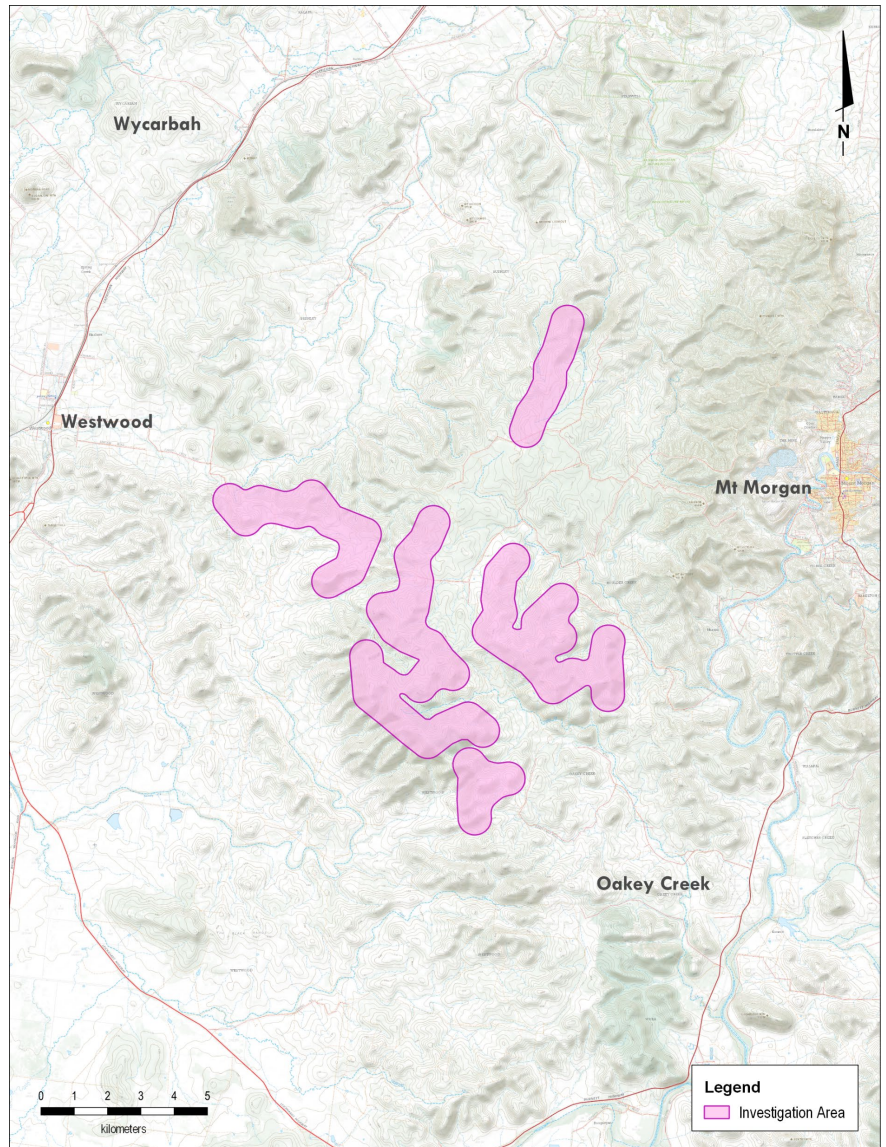
dnrme.qld.gov.au/energy/initiatives/powering-queensland

Contact

bouldercreekwindfarm.com.au

Paul Stangroom, General Manager (Qld)
Email: p.stangroom@epuron.com.au
Tel: (02) 8456 7401

Boulder Creek Wind Farm investigation area



Why clean energy?

Renewable sources of energy – hydro, wind, solar – are the most efficient and cheapest new sources of bulk energy generation. Development of renewable energy projects will deliver cheaper and reliable electricity to households and businesses, help governments and industry meet commitments to net-zero emissions targets, and transition our energy market in line with global trends.

Last year renewables contributed 24% of Australia's, and 14% of Queensland's, total electricity. By the end of 2020 it is estimated that wind will account for 9.4% and solar for 10.3% of Australia's total energy mix.

Register for project news

We are keen to keep local residents and other interested stakeholders up to date on project developments and opportunities to provide feedback.

If you would like to receive project news via email please register your details at epuron.com.au/mailling-list-details.

If you would prefer to receive this via mail please send the project team your preferred mailing address (details left).

We respect your privacy and your details will only be used for this purpose.