

Guildford Wind Farm

Issue 1

September 2020



Consulting with the community

Epuron wants to engage with the community, including neighbours, residents of the broader region, visitors, Councils and other interested stakeholders throughout the planning process.

Opportunities for consultation throughout the process will include project updates, meetings and information sessions.

Please see overleaf for how to contact us to register your details, so that we can send you updates and notify you directly about information sessions when these are scheduled.

In the event that meetings or information sessions cannot be held locally due to travel or distancing restrictions, they will be held online.

We look forward to hearing from and meeting interested members of the community, and working together to maximise the benefits of this project for the local and regional areas.

Wind in the forest

Australian renewable energy developer Epuron is investigating an area in Tasmania's north west for a proposed wind farm.

The site, called Guildford Wind Farm, is approximately 7km north east of Waratah and 15km south of Hampshire, in the Waratah Wynyard Council area. It is currently used for commercial forestry plantation and seems particularly suitable for a wind farm because:

- there is a good wind resource
- it is close to the existing high voltage transmission network
- it is adjacent to the Ridgley and Murchison Highways for good transport access
- forestry and wind farming are compatible land uses
- it is away from populated areas, reducing the likelihood of amenity impacts.

For a map of the site investigation area **please see overleaf**.

The proposed project is at an early stage. The next step is the submission of a Notice of Intent to the Environment Protection Authority (EPA) Tasmania, and a referral to the Commonwealth under the *Environment Protection and Biodiversity Conservation Act 1999* (EPBC Act), to receive assessment guidelines and commence the dual planning process with the State and Local Governments. Following this, various detailed studies will be done over 12-24 months in preparation for a development proposal. Throughout the process updates will be provided to the local community, other stakeholders and online at guildfordwindfarm.com.au.

The Guildford Wind Farm, with up to 80 turbines, would contribute a long-term, low cost source of electricity to the Tasmanian grid and support Tasmania's renewable energy target of 200% by 2040.

For more information visit guildfordwindfarm.com.au

EPURON

About Epuron

Epuron is an Australian owned developer of renewable energy projects.

Founded in 2003 and based in Sydney NSW, the company has been involved in developing more than 20 renewable energy projects around Australia.

Completed projects now in operation include White Rock Wind Farm and Silvertown Wind Farm (see below), and solar farms in Clermont (QLD), Nevertire (NSW) and Katherine (NT).

Current projects in Tasmania include Western Plains Wind Farm, north-west of Stanley, St Patricks Plains Wind Farm in the Central Highlands and Hellyer Wind Farm adjacent to Guildford Wind Farm (see map at right).

For more information on Epuron's experience and projects please visit epuron.com.au



White Rock NSW – 175MW Stage 1
In operation. Stage 2 about to go to construction (CECEP/Goldwind)

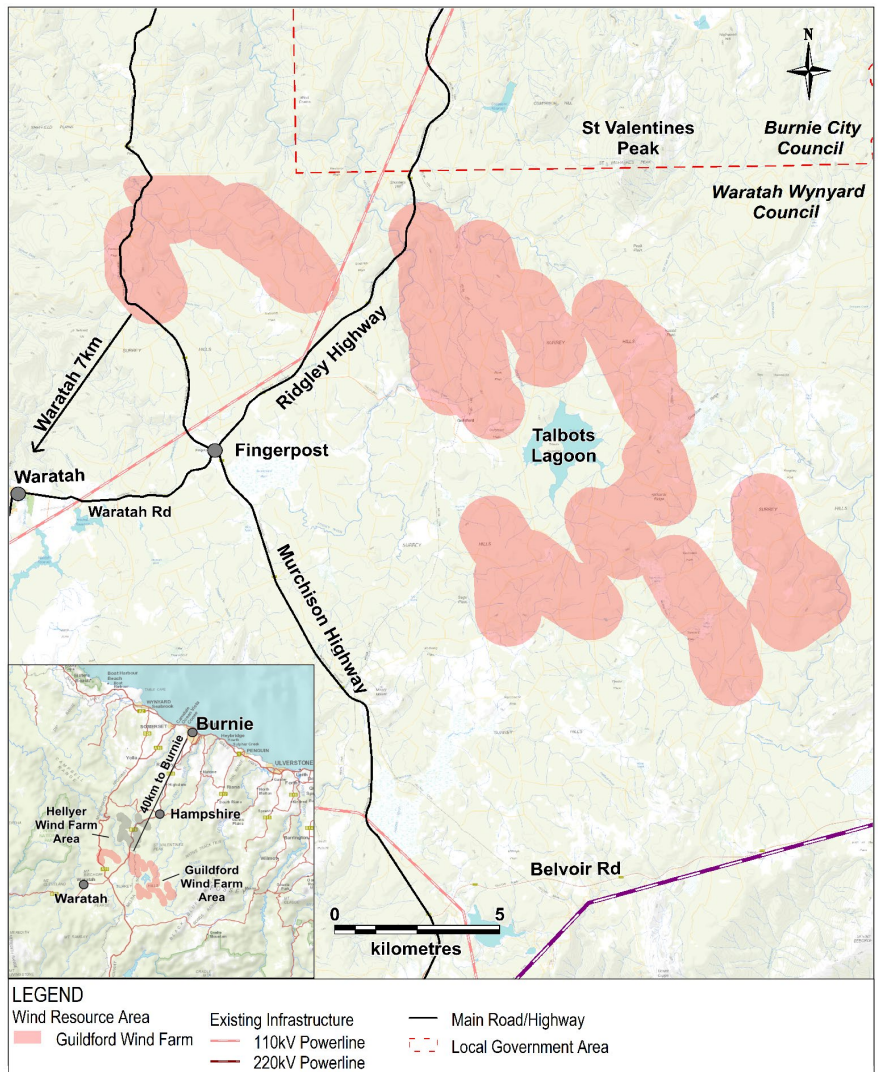


Silvertown NSW – 200MW Stage 1
In operation (AGL Energy /PARF)



Western Plains TAS – up to 12 turbines
In planning assessment process

Site investigation area for Guildford Wind Farm



The above map shows the site investigation area for the Guildford Wind Farm. The inset map shows the location of this and another area nearby also being investigated by Epuron for the proposed Hellyer Wind Farm. More information on this project is available online at hellyerwindfarm.com.au.

Register for project news

We are keen to keep members of the community and other interested stakeholders up to date on project developments and opportunities for feedback.

If you would like to receive project news via email please register at epuron.com.au/mailling-list-details.

If you prefer to receive mailed updates please let us know and provide your mailing address to one of the project team via the details below.

We respect your privacy and your details will only be used for this purpose.

For more information on the proposed Guildford Wind Farm project please contact:

Sandra Weinhold
Project Manager
Email: s.weinhold@epuron.com.au
Mobile: 0412 833 657

Donna Bolton
Senior Project Manager
Email: d.bolton@epuron.com.au
Mobile: 0405 535 325