

Wind Farm Newsletter

COMMUNITY NEWSLETTER EDITION 1

MARCH 2020



What we are doing

The land around the exploration site has farmed cattle for generations and the Wind Farm represents an opportunity for a new economic activity in the region that is complementary to cattle farming. The project proposes to produce clean and low cost electricity using the consistent winds that blow across the nearby ranges.

The area we are exploring for a wind farm is shown in the map (back page) as the **“potential wind resource area”**, which could contain approximately 60 to 90 wind turbines. The area has reliable and consistent winds and is located in close proximity to existing power-lines that are part of the Queensland network.

Lotus Creek Wind Farm Update

Epuron is an Australian-owned renewable energy company, based in Sydney, that has been developing renewable energy projects since 2003. We have been exploring an area along the Connors Range approximately 20km west of St Lawrence to see if it is suitable for a wind farm. We are currently in the process

of undertaking detailed site investigations including flora and fauna, visual impact and traffic studies. Once these studies are complete we expect to lodge a development application for a wind farm with the Department for State Development, Manufacturing, Infrastructure and Planning later this year.

We are also working with state and federal environmental agencies to identify the best measures to avoid, mitigate and offset project impacts to local ecology. Some of these measures could include planting of trees and improving any existing degraded habitat.

About Epuron

Epuron has been developing renewable energy projects since 2003.

We have successfully developed numerous wind and solar projects across Australia. To view our full range of projects please visit epuron.com.au for more details.

Examples of previous wind farm projects developed by Epuron in Australia



Gullen Range Wind Farm



Liverpool Range Wind Farm (Photomontage)



White Rock Wind Farm



The benefits of wind power to the electricity market

Australia is very lucky to have abundant energy resources including coal, gas, hydro, wind and sunshine. Traditionally in Australia we have used coal and gas for producing electricity. Today **wind energy is one of the cheapest forms of electricity generation**. Wind energy complements our traditional electricity generation sources and makes up around 8% of the total electricity generated in Australia.

We are exploring the Connors Range area because we believe it has a good chance of being suitable for a wind farm with:



Reliable & consistent winds



Proximity to power-lines to connect to the electricity grid



Complimentary existing energy producing activities in the region

Join our mailing list for updates ...

If you would like to be added to our mailing list we would love to hear from you!

We are currently collecting community members contact details so we can keep you up-to-date and informed with regular newsletters and projects updates. We respect your privacy and your contact details will only be used for this purpose.

Please email your contact details to us at: info@epuron.com.au
Or call us on (02) 8456 7400

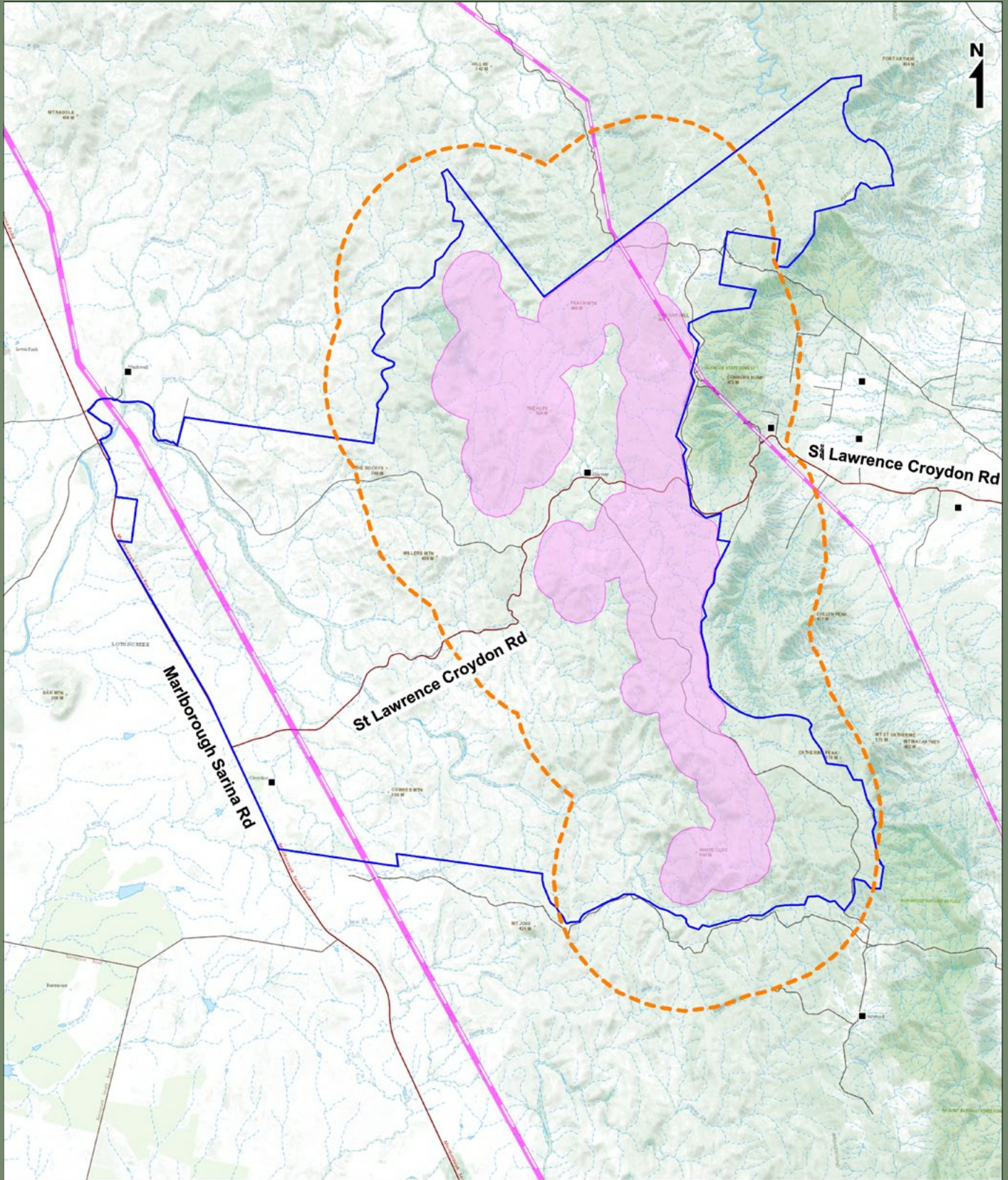
Send us your feedback ...

We are undertaking detailed site investigations and will be seeking to prepare a development application for the project later this year. As part of these activities, **we want to hear from you** so we can include your views into our plans where possible. Please find attached feedback form which we invite you to fill out and return to us either via:

Post: Level 11, 75 Miller Street, North Sydney 2060 NSW;
Email: info@epuron.com.au

Jessica Picton - Project Manager | Phone: 0423 669 422 | Email: j.picton@epuron.com.au

Lotus Creek Wind Farm Exploration Area



- Project Boundary
- Potential Wind Resource Area
- 5km Wind Farm Buffer
- Known House within 15km (aproximately)
- Existing 275 kV powerlines



Lotus Creek Wind Farm Feedback Form

We are investigating the development of a wind farm 20km west of St Lawrence in the Connors Range and we want to hear from you so that we can include your views into our plans where possible.

If you want to provide input, please answer the following questions and return the form to us. Specific responses or your name will not be shared publicly, but you can complete the survey anonymously if you choose.

1. How far do you live, or own property, from the potential wind resource area?

- 0 – 5 km More than 5 km More than 20 km

2. What do you value and appreciate most about this community?

.....

3. Why do you live, or own property, in the area?

- Run a business Work in the area Farming activities
 Primary residence (Home) Second home / weekender
 Other

.....

4. Do you have any concerns about a wind farm being developed in the area?

- No concerns
 Noise Visual Traffic Impact on recreation
 Impact cattle transport movements
 Impact on flora/fauna
 Other

.....

5. Do you believe a wind farm would have a positive, negative, or neutral impact on the area? Why?

- Positive Negative Neutral

.....

6. Do you have any other feedback, comments or suggestions?

.....

If you would like to be kept informed about the project, please provide us with your contact details so that we can periodically send you updated information.

Preferred method of contact:

- Post Email Phone

Name:

Postal Address:

.....

Email:

Phone:

Please complete the feedback form, take a photo and send it back by email to info@epuron.com.au OR post to 11, 75 Miller St, North Sydney, NSW, 2060.

This form can also be accessed online at epuron.com.au