

Who is Epuron

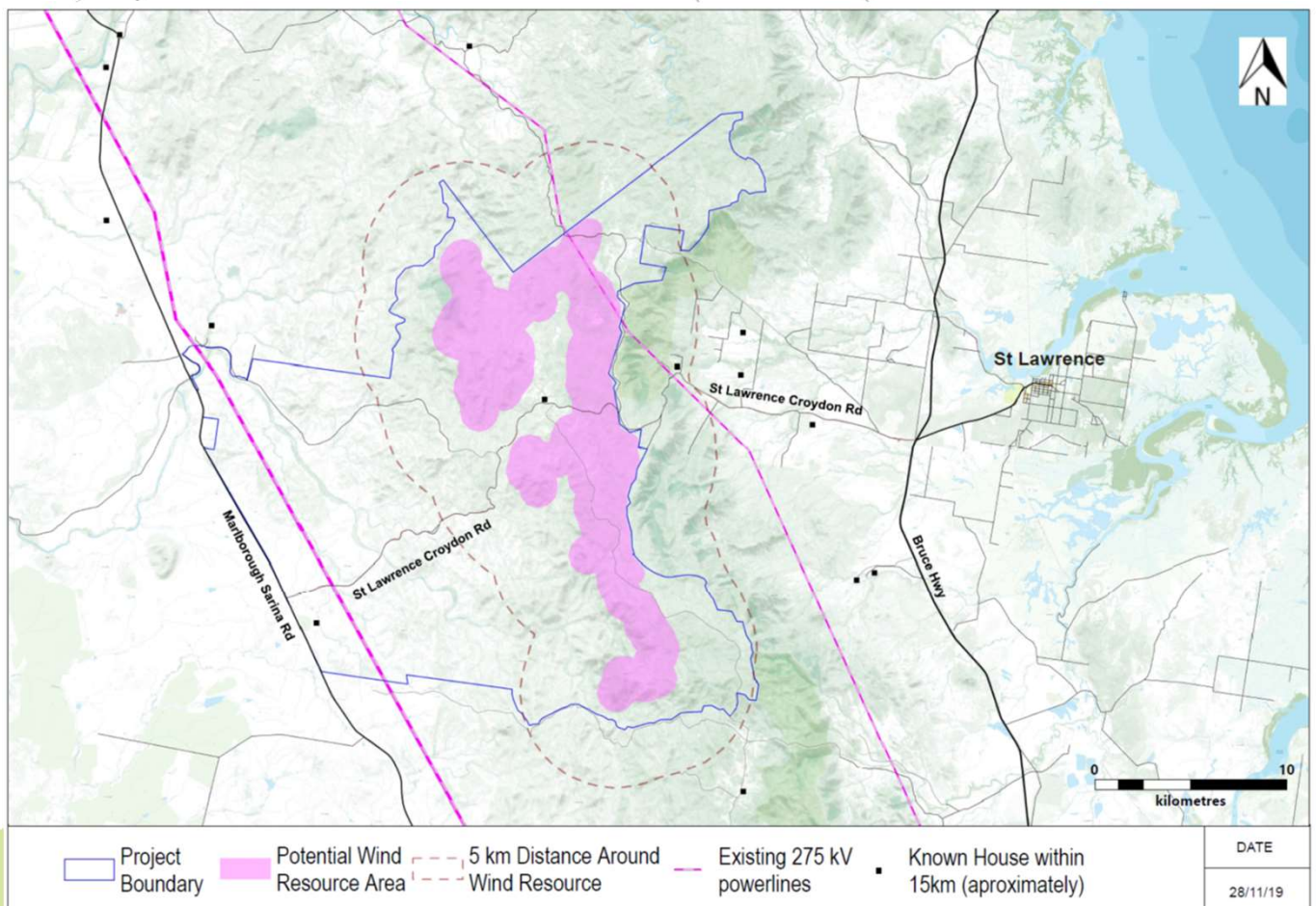
Epuron is an Australian-owned renewable energy company, based in Sydney, that has been developing renewable energy projects since 2003. We have successfully developed numerous wind and solar projects in NSW and across Australia.

What are we doing

We have been exploring an area along the Connors Range approximately 20 km west of St Lawrence to see if it is suitable for a wind farm. We are currently in the process of undertaking detailed site investigations including flora and fauna, visual impact and traffic studies. Should these studies be positive, we intend to lodge a development application for a wind farm with the Isaac Regional Council in early 2020.

Where are we investigating

The area we are exploring for a wind farm is shown in the map below as the “potential wind resource area”, which could contain approximately 60 to 90 wind turbines. The potential wind resource area has reliable and consistent winds and is located in close proximity to existing powerlines that connect to the electricity grid.



Why a wind farm

Australia is very lucky to have abundant energy resources including coal, gas, hydro, wind and the sun. Traditionally in Australia, we have used coal and gas for producing electricity. Today, wind energy is one of the cheapest forms of electricity generation. Wind energy complements our traditional electricity generation sources and makes up around 8% of the total electricity generated in Australia. We are exploring the Connors Range area because we believe it has a good chance of being suitable for a wind farm with:

- reliable and consistent winds,
- located in close proximity to powerlines that connect to the electricity grid, and is
- complimentary to existing energy producing activities in the region including coal, gas and solar energy.

Examples of previous wind farm projects by Epuron in Australia



Gullen Range Wind Farm



Liverpool Range Wind Farm (Photomontage)



White Rock Wind Farm

How will we involve you

As stated, we are currently undertaking detailed site investigations and will be seeking to prepare a development application for the project next year. As part of these activities, we want to hear from you so we can include your views into our plans where possible. Please find attached a wind farm feedback form which you can fill out and return to us either via:

- post at Level 11, 75 Miller Street, North Sydney 2060 NSW; or
- scan and return via email to info@epuron.com.au

Want more information?

Please contact:

Jessica Andrews
Project Manager
 Level 11, 75 Miller Street
 North Sydney 2060
 Ph: 0423 669 422
 E: j.andrews@epuron.com.au

Or have a look at our webpage:

www.epuron.com.au