

EPURON | St Patricks Plains Wind Farm

Newsletter 4 | November 2019

Project Update

As we start preparing the Environmental Impact Statement for the proposed St Patricks Plains Wind Farm, specialist consultants will be undertaking a range of studies across the project site for the next few months to identify artefacts and species and to understand the visual impacts of the wind farm.

Following four seasons of flora and fauna studies all constraints and local feedback will be collated and the layout of the wind farm will be reviewed. The revised layout will aim to avoid, minimise and/or mitigate impacts.

The Epuron team would like to hear from people who live or work in the area or use the area for recreation so that we are aware of any individual and/ or group concerns they may have.

If the wind farm is approved and built, we want to minimise impacts where possible and maximise local benefits to the community.

Guidance issued for wind farm studies

The Environment Protection Authority (EPA) Tasmania has now issued Project Specific Guidelines (PSG) to guide the information to be included in the Environmental Impact Statement (EIS) which Epuron is now preparing.

The PSG include input from the Department of the Environment and Energy (DoEE) to address Commonwealth Environment Protection & Biodiversity Conservation Act matters. The final issued PSG can be found at: <https://epa.tas.gov.au/assessment/assessments/epuron-pty-ltd-st-patricks-plains-wind-farm-central-highlands-tasmania>

About the Project

Epuron is proposing the St Patricks Plains Wind Farm with up to 67 wind turbines and associated infrastructure around Steppes in the Central Highlands.

We are in the early stages of the planning process. Our first Community Information Day was on 4th August 2019.



Images and maps on display at the Information Day held on August 4, 2019, can be accessed at: <https://epuron.com.au/wind/st-patricks-plains/downloads/>

Photomontage of the proposed wind farm near Steppes Hall, looking west along Highland Lakes Road



QUICK FACTS

67

Wind
Turbines

3.6 – 6.2 MW

Generating
capacity -
up to 300 MW

240m

Max total height
to blade tip

90m

Proposed
blade length

60m

Ground
Clearance

150m

Tower
height

40 x 120m

Hardstand
dimensions



Epuron is pleased to be joining the fun and action with a stall at this year's Highlands Bushfest on Saturday 23rd and Sunday 24th of November.

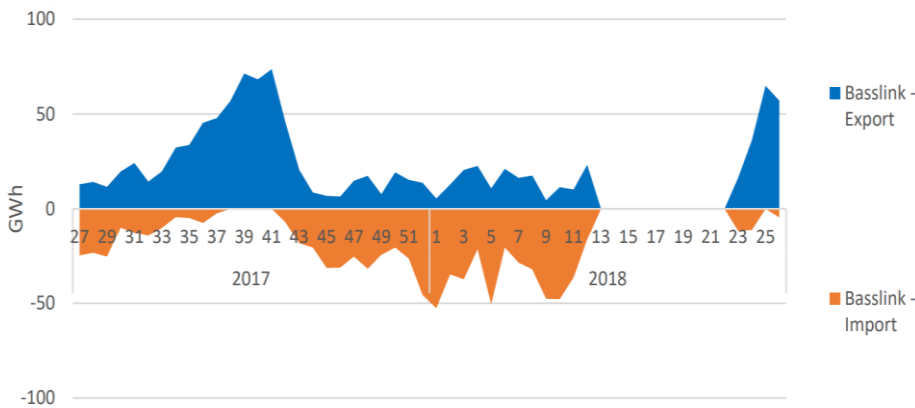
Please come and visit us at the Bothwell Recreation Ground to find out about the proposed wind farm - to see maps and photomontages and to share your local knowledge of the area.

Sandra, Donna and Leigh look forward to meeting you there.

Did you know? Tasmanian electricity facts

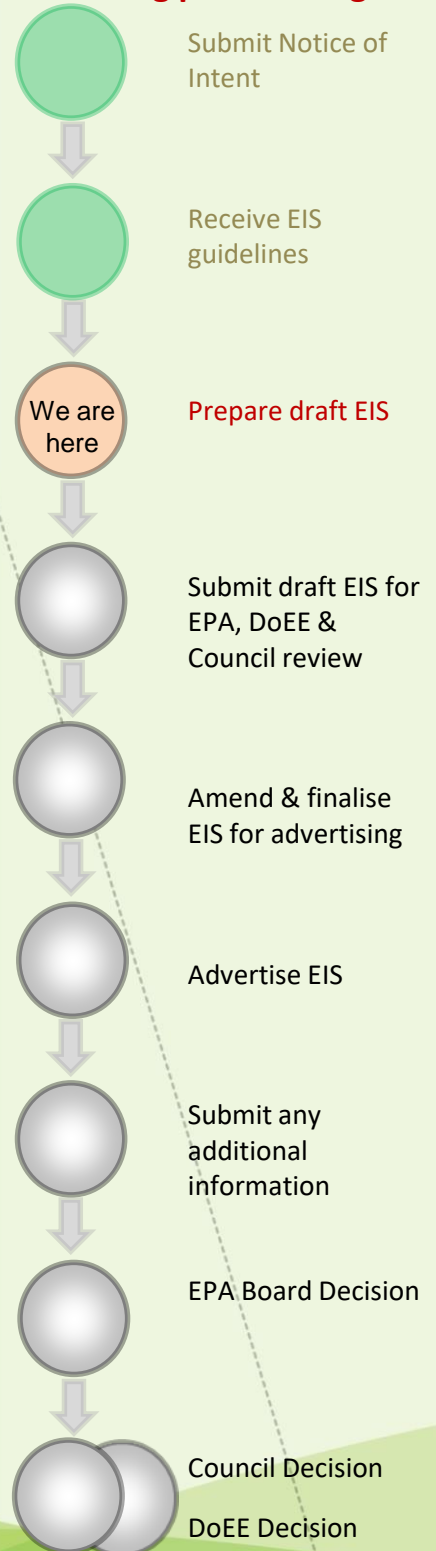
In 2017-2018 Tasmania:

- generated 9.7% more electricity than the previous 2 years due to water storages sitting at around 40 % capacity for much of the year
- had 2,000 customers connect new solar systems to the Tasmania network
- exported 1,073 GWh to Victoria via Basslink
- imported 878 GWh from Victoria via Basslink – see Basslink flows below – orange imports, blue exports. The gap is when Basslink was down between weeks 12 and 23 of 2018



Source: Energy in Tasmania 2017-18 Report.pdf at economicregulator.tas.gov.au

Planning process stages

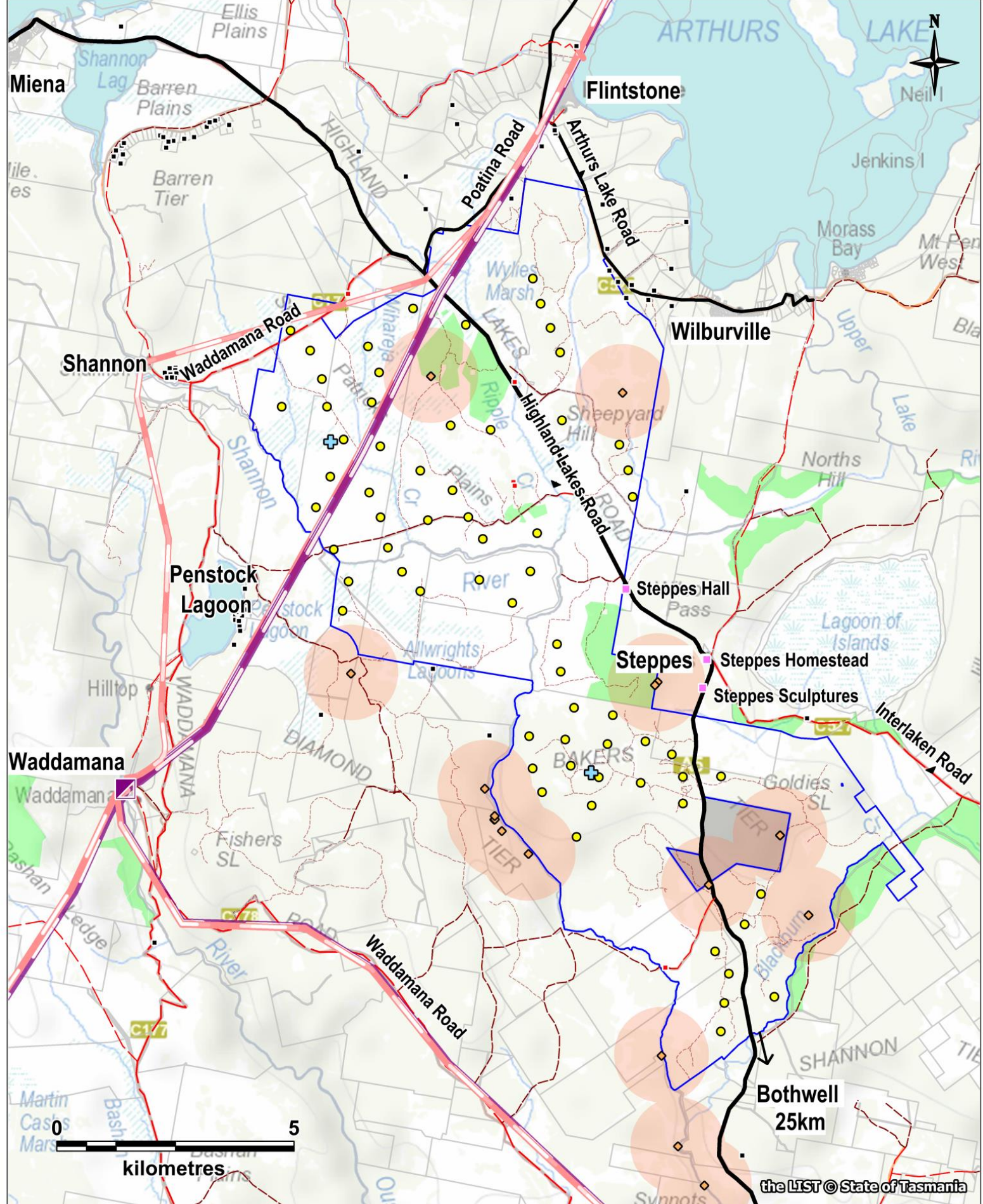


Contact us:

Donna Bolton
Senior Project Manager
d.bolton@epuron.com.au
Mobile: 0405 535 325

Sandra Weinhold
Wind & Site Engineer
s.weinhold@epuron.com.au
Mobile: 0412 833 657

EPURON Level 11, 75 Miller Street, North Sydney NSW 2060
info@epuron.com.au www.epuron.com.au



LEGEND

- Site boundary
- Not included in site boundary
- + Mast location
- Proposed wind turbine
- Existing Infrastructure**
- 110 kV powerline
- 220 kV powerline
- Waddamana Substation
- Principal road (Sealed)
- Minor road (Unsealed)
- Tracks (Unsealed)

- Dwelling**
- Involved residence
- Uninvolved residence
- Historic site
- Constraints**
- ◆ Eagle nest
- Eagle nest buffer - 1km
- Conservation covenant

EPURON

PROJECT
St Patricks Plains Wind Farm

TITLE
Indicative Site Layout & Constraints

the LIST © State of Tasmania