

EPURON | St Patricks Plains Wind Farm

Newsletter 2 | July 2019

Community Information Day

Epuron is developing a wind farm in the Central Highlands and is about to begin the planning process. We have spoken to Central Highlands Council - the planning authority, and lodged a Notice of Intent with the Environment Protection Authority Tasmania. We are also making a referral under the Commonwealth EPBC Act.

This lodgement will result in the EPA issuing draft Project Specific Guidelines to detail the requirements for our planning and environmental studies. These Guidelines will be advertised and put on public exhibition in the coming weeks, providing the opportunity for anyone to make a submission.

The preliminary layout of the wind farm which was sent to the EPA is shown on the **map overleaf**. We know that some of those locations will change as we identify areas to avoid or where we need to minimise impacts.

We are holding a community information day at the Steppes Hall on Sunday 4th August from 10:00am to 2:00pm where we will have maps and information about the proposed wind farm. Representatives from Epuron, and our planning specialist, will attend.

We invite you to come and tell us about any concerns you may have.

Community Consultation and Engagement

We have spoken to and met with residents, shack owners, house owners and landowners in the area.

A number of issues have been raised. These include:

- Impacts to hunting activities
- Impacts to the fishing experience
- Impacts to Eagles
- Noise impacts
- Visual impacts to neighbours and to the gateway to the Great Lakes.

Our aim is to be proactive, transparent and to understand, and where possible address, concerns raised by the community.

This project has the potential to bring benefits including construction and ongoing jobs, spending in the area and once the wind farm is operational a *Community Fund* to support local community initiatives.

Please contact us to register your address, email or phone details so we can keep you updated.

We look forward to working with the community to maximise the benefits and to minimise the impacts of the project for near neighbours

Information Day



Steppes Hall
Highland Lakes Road
Steppes, Central Highlands

Sunday 4th August 2019
10:00 am to 2:00 pm



Contact us:

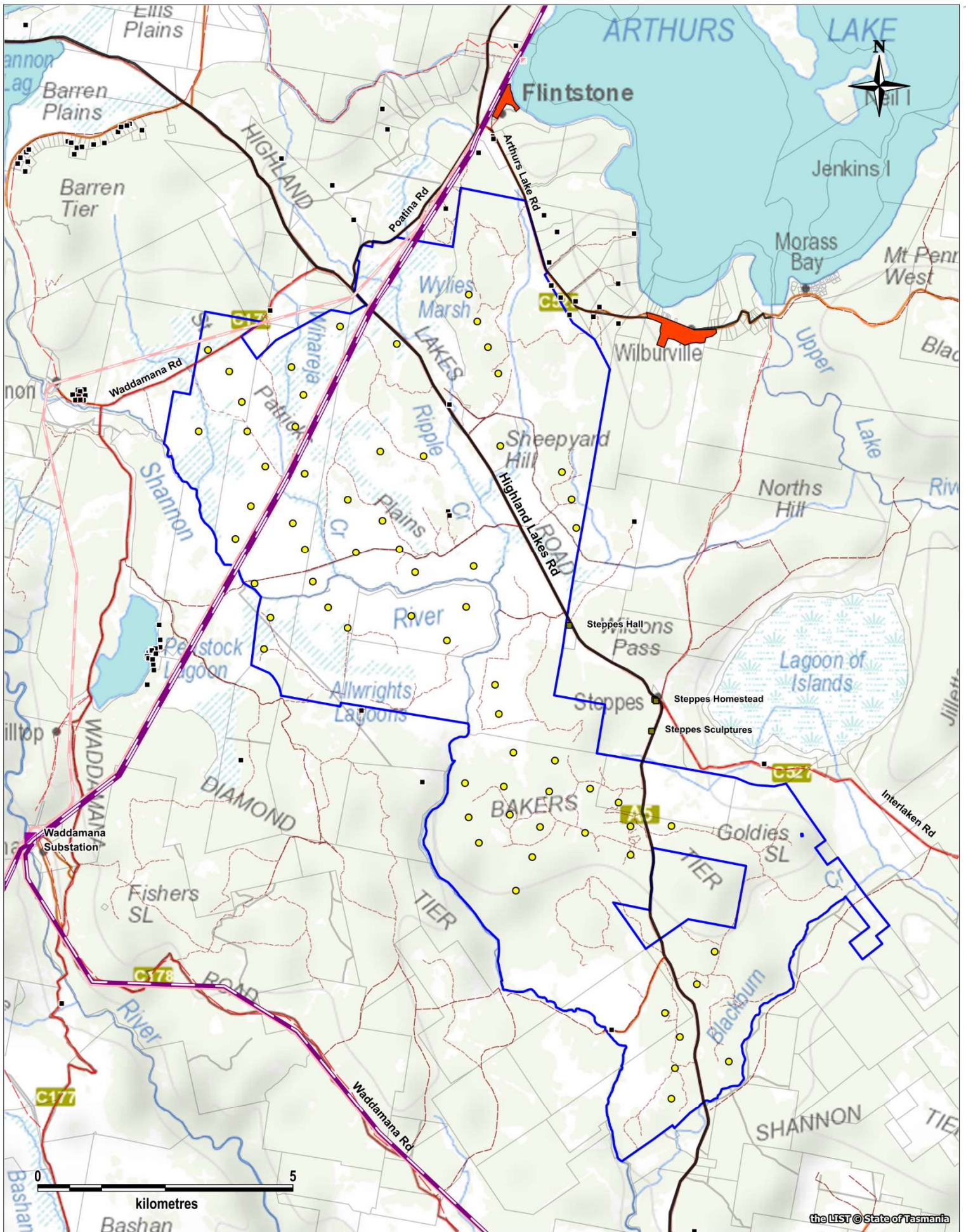
Donna Bolton, Senior Project Manager
d.bolton@epuron.com.au
Mobile: 0405 535325

Sandra Weinhold, Wind & Site Engineer
s.weinhold@epuron.com.au
Phone: 02 8456 7407

EPURON

Level 11, 75 Miller Street
North Sydney NSW 2060

info@epuron.com.au
www.epuron.com.au



the LIST © State of Tasmania

LEGEND

- Site Boundary
- Proposed Wind Turbine
- Existing Infrastructure
 - 220 kV OH Powerline
 - 110 kV OH Powerline
 - Substation
- Principal Road (Sealed)
- Minor Road (Unsealed)
- Tracks (Unsealed)
- Dwellings**
 - House
 - Historic Site
 - Township

EPURON

PROJECT
St Patricks Plains
Wind Farm

TITLE
Indicative Site Layout

SCALE	DATE	DRAWN
1:65,000 @ A3	05/07/19	SW