

# EPURON | St Patricks Plains Wind Farm

Newsletter | April 2019

## Exploring for wind

Epuron is an Australian-owned renewable energy company, based in Sydney. We are exploring an area south-east of Miena in the Central Highlands of Tasmania for a potential wind farm. **See map overleaf.** We believe the area has a good chance of being suitable for a large scale wind farm, because:

- there is a good wind resource – we are conducting monitoring to confirm this;
- it is in close proximity to the existing high voltage transmission network;
- there is good access using roads currently in use for Cattle Hill Wind Farm deliveries;
- there is a low population density around the area under investigation which will minimise the potential for amenity impacts.

If the project is progressed, the power generated would supply Tasmanian energy users, allowing hydro power generators to ramp down and save water during windy periods. This would support Tasmania in becoming the 'battery of the nation' through its ability to store hydro power for times when it is most needed.

## Community Consultation and Engagement

Epuron is keen to engage with the local community including local businesses throughout the investigation process, and through any subsequent planning and approval process. This will help to ensure that local issues are well understood and considered.

Our aim is to be proactive, transparent and to understand, and where possible address, any concerns raised by the community. Our consultation with the community during the various stages of development will include: face to face meetings with local residents, project updates via newsletters and our project website and community information sessions.

If the project does proceed, once the wind farm is operational Epuron would establish a *Community Fund* to support community initiatives in the local area.

Please contact us to register your address, email or phone details so we can keep you updated on our investigations. We look forward to working with the community to maximise the benefits of the project to the surrounding community.

## Company Profile

Epuron has been developing renewable energy projects since 2003 and has a strong track record:

- Australian privately owned and run company, based in North Sydney, NSW
- 570 megawatts of Epuron developed projects are now operational
- 400 megawatts of solar farm development experience
- 5 solar farms around Australia are owned and operated by Epuron

## Track record



Liverpool Range NSW – < 267 turbines  
Approved - Sold to Tilt Renewables



White Rock NSW – 175MW Stage 1  
Construction Complete (Goldwind)



Silverton NSW – 200MW Stage 1  
Construction Complete (AGL/PARF)



Western Plains TAS – < 13 turbines  
Planning Assessment

## Contact us:

Donna Bolton, Senior Project Manager  
[d.bolton@epuron.com.au](mailto:d.bolton@epuron.com.au)  
Mobile: 0405 535325

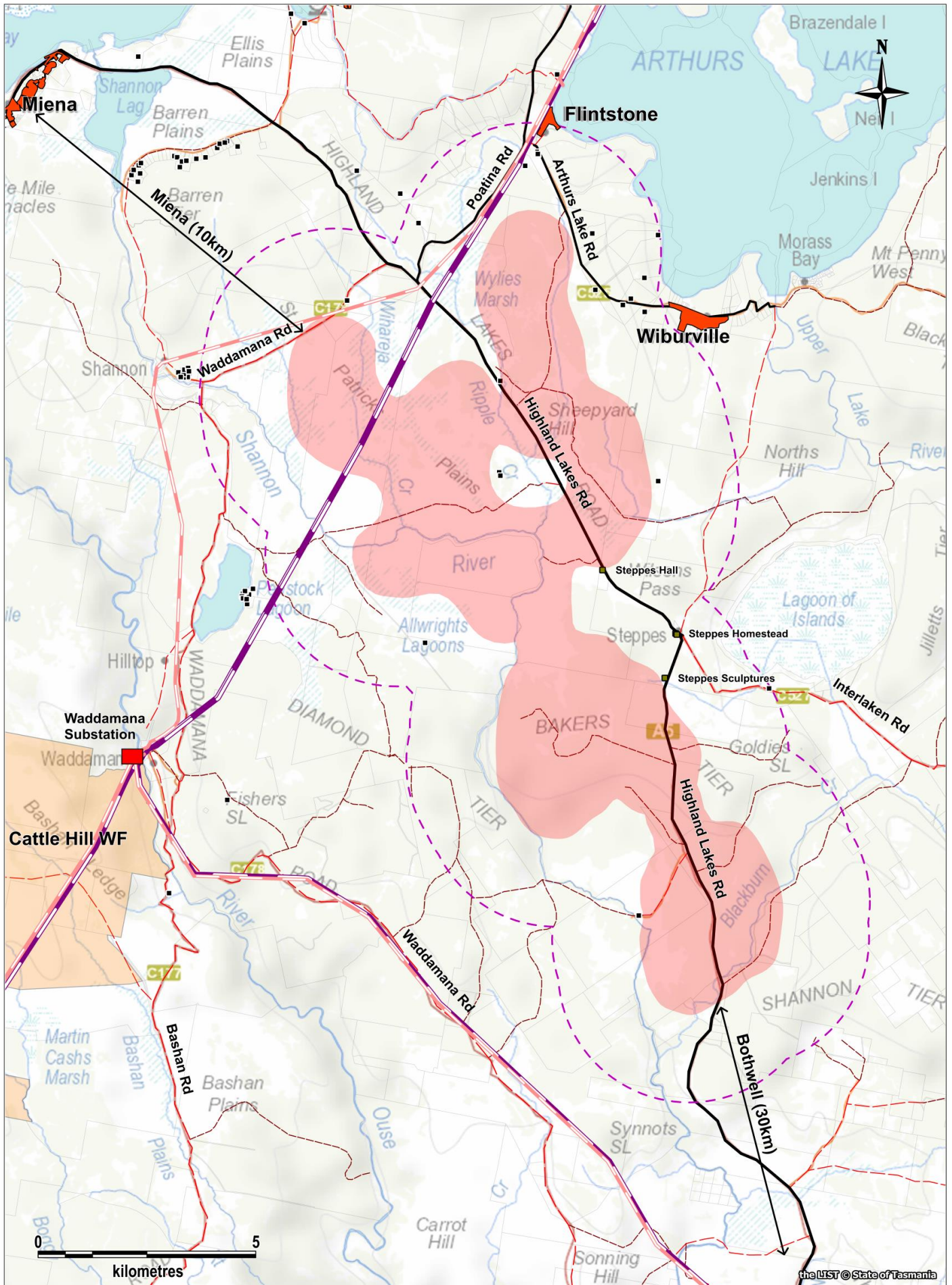
Sandra Weinhold, Wind & Site Engineer  
[s.weinhold@epuron.com.au](mailto:s.weinhold@epuron.com.au)  
Phone: 02 8456 7407

### EPURON

Level 11, 75 Miller Street  
North Sydney NSW 2060

[info@epuron.com.au](mailto:info@epuron.com.au)

[www.epuron.com.au](http://www.epuron.com.au)



## LEGEND

- |                              |   |                         |                   |                                     |
|------------------------------|---|-------------------------|-------------------|-------------------------------------|
| Potential Wind Resource Area | Existing Infrastructure<br>110kV OH Powerline | Principal Road (Sealed) | Dwelling          | distance from site of investigation |
| 3km Buffer                   | 220kV OH Powerline                            | Minor Road (Unsealed)   | Historic Building |                                     |
|                              |   | Tracks (Unsealed)       |                   |                                     |