

# Nevertire Solar Farm



## Project Update No.1 October 2016

### Project Details

Epuron Island GP Management Pty Ltd is proposing to construct a 120MW solar farm at Nevertire, NSW. The solar farm would be located approximately 1km west from Nevertire and would be accessed from the Mitchell Highway. Refer to map, overleaf. The project would generate renewable electricity which will feed into the national electricity grid.

The project would use standard, flat solar photovoltaic ("PV") modules. These are the same type of modules commonly used on residential rooftops. The modules would either be 'fixed' mounted or 'tracking'. Tracking frames move every minute or so in order to ensure that the modules are always facing the sun. The panels would be mounted on steel frames and these pile driven into the ground, requiring minimal ground disturbance. A transmission line (co-located where possible) would connect the solar farm to the existing substation within Nevertire.

**The Nevertire solar project would provide nation-wide benefits, such as CO<sub>2</sub> reduction, as well as local benefits such as job creation during construction and operation**

### Epuron Island GP

Epuron is an Australian-owned renewable energy development company, established in 2003. Epuron has developed and now owns and operates a portfolio of solar projects of approximately 7MW; one of the largest in the country. In 2012 Epuron completed construction of three solar power plants in remote communities in the Northern Territory. In 2013, Epuron acquired the 'Uterne 1' solar power station near Alice Springs and in July 2015 commissioned an extension to it, 'Uterne 2'. Earlier this year Epuron commissioned 1.8MW of solar capacity at the iconic Ayers Rock Resort at Yulara. Epuron is currently working with Island Green Power on a pipeline of large scale solar projects. Island Green Power has developed a portfolio of solar plants in the United Kingdom with a total capacity of over 100MW. You can find more information about Island Green Power at [www.islandgp.com](http://www.islandgp.com). Epuron and Island Green Power have formed a joint company called Epuron Island GP Management Pty Ltd.

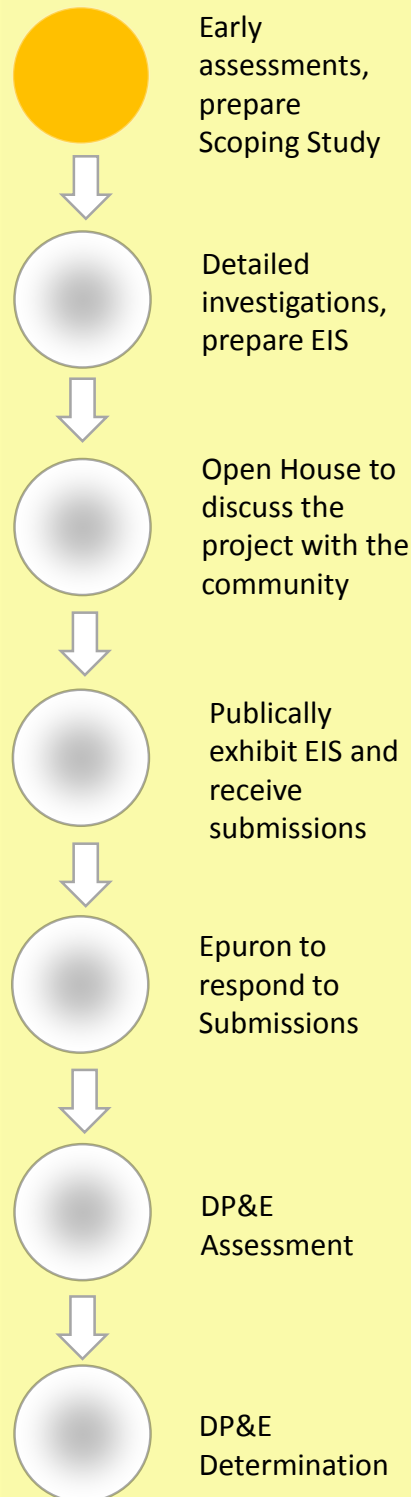
### What is next?

Environmental assessments are currently being undertaken to assist in developing a project that responds to the site location appropriately. A Scoping Assessment and then an Environmental Impact Statement (EIS) will be prepared. These will be submitted to the NSW Department of Planning and Environment (DP&E) and will be available to the public from the Department's website. During the EIS exhibition, public submissions will be sought.

Epuron will host an 'Open House' in Nevertire in November or December. This will provide a chance to find out more about the project. We would like your input to assist the development of the project. Please consider sending us a feedback form, provided with this newsletter.

## EPURON

### NSW Planning Stages



**Contact us: Jessica Picton Epuron Project Manager 0423 669 422**



#### By letter:

Epuron  
Level 11, 75 Miller Street  
North Sydney NSW 2060



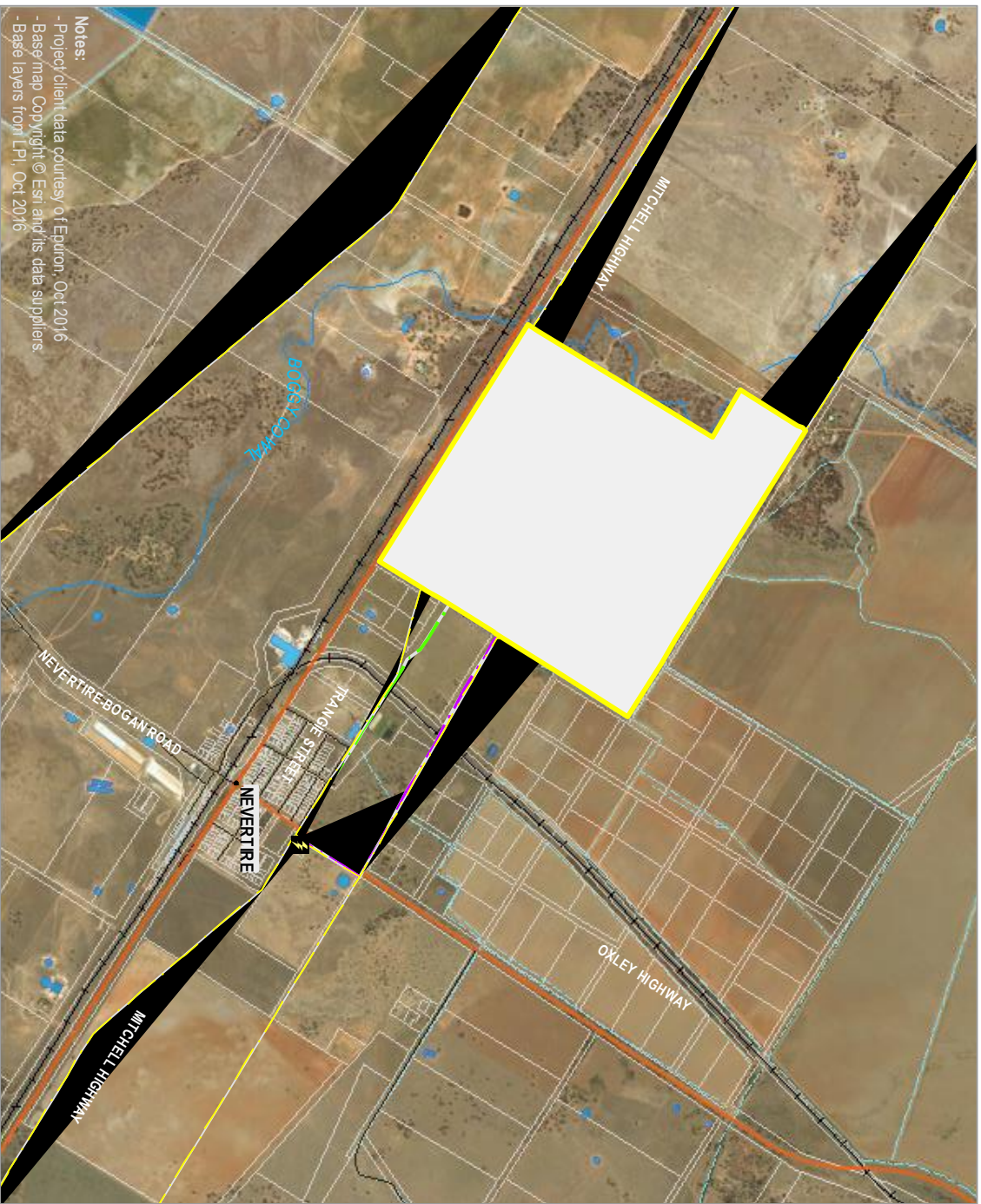
#### Email or Internet:

[info@epuron.com.au](mailto:info@epuron.com.au)  
[www.epuron.com.au](http://www.epuron.com.au)




#### By phone:

02 8456 7400



Notes:  
 - Project client data courtesy of Epuron, Oct 2016  
 - Base map Copyright © Esri and its data suppliers.  
 - Base layers from LPI, Oct 2016


- Town
- ⚡ Substation
- Site (Lot 26 DP 755292)
- Existing transmission (Tx) line
- Tx connection options A and C
- Tx connection option B
- Development envelope
- Main road
- Local road
- Railway
- Canal / drain
- Drainage line
- Farm dam or other water body
- Cadastre



0 0.25 0.5 1km

Ref: SW097\_Nevertire

Author: SP



[www.rnghenvironmental.com.au](http://www.rnghenvironmental.com.au)

# Nevertire Solar Farm



## Community feed back form (Page 1 of 2)

Your feedback is important to develop a solar farm project that best suits the local area and community. Your feedback will ensure local concerns are understood by the developers and the environmental assessment team.

Your name: (this will not be printed or recorded anywhere but is to ensure that we don't double count forms)

.....

### Select which answer best describes where you live:

- a) Less than 1 kilometre from the proposed solar plant
- b) Less than 1-2 kilometres from the proposed solar plant
- c) 2-5 kilometres from the proposed solar plant
- d) More than 5 kilometres from the proposed solar plant
- e) Not a member of the local community

### Tell us what you value about the local area:

What do you value most about the local area? Circle one or more.

- a) Views
- b) Community / family ties
- c) Historic values
- d) Work opportunities
- e) Recreation opportunities, including sporting, nature based etc.
- f) Natural values
- g) Other

Provide more detail about your answer:

.....  
.....  
.....  
.....  
.....  
.....

### Which views or landscape characteristics in the region and local area are important to you?

.....  
.....  
.....  
.....  
.....

Provide more detail about your answer:

.....  
.....  
.....  
.....  
.....

# Nevertire Solar Farm



**EPURON**

## Community feed back form (Page 2 of 2)

Your feedback is important to develop a solar farm project that best suits the local area and community.

### What do you like most about solar farms, generally?

- a) Renewable energy generation
- b) Local economic opportunities – jobs, tourism, economic stimulus
- c) Diversification of land use / income streams
- d) Other

Discuss:

.....

.....

.....

.....

### What concerns do you have about solar farms, generally? Circle one or more.

- a) Community impacts
- b) Visual impact
- c) Noise, during construction or operation
- d) Traffic, during construction or operation
- e) Effects on land use or land values
- f) Effects on recreation opportunities
- g) Effects on natural areas and habitats
- h) Other

### What specific concerns do you have about the solar farm proposed at Nevertire?

.....

.....

.....

.....

.....

.....

### Reflecting local values and character

We would like the project to fit in with the local values and character of Nevertire. Can you suggest ways that we might achieve this? Ie – a competition to design the signage? Adopt a panel? Local viewing area?

.....

.....

.....

.....

.....

.....