

P:\GIS\Project-2\project\3232427\_Silvertown\_WF\Maps\_2016\3232427\_Silvertown\_WF\_A3\_Updated\WTG Plan\_17052016.mxd 27/05/2016 16:00

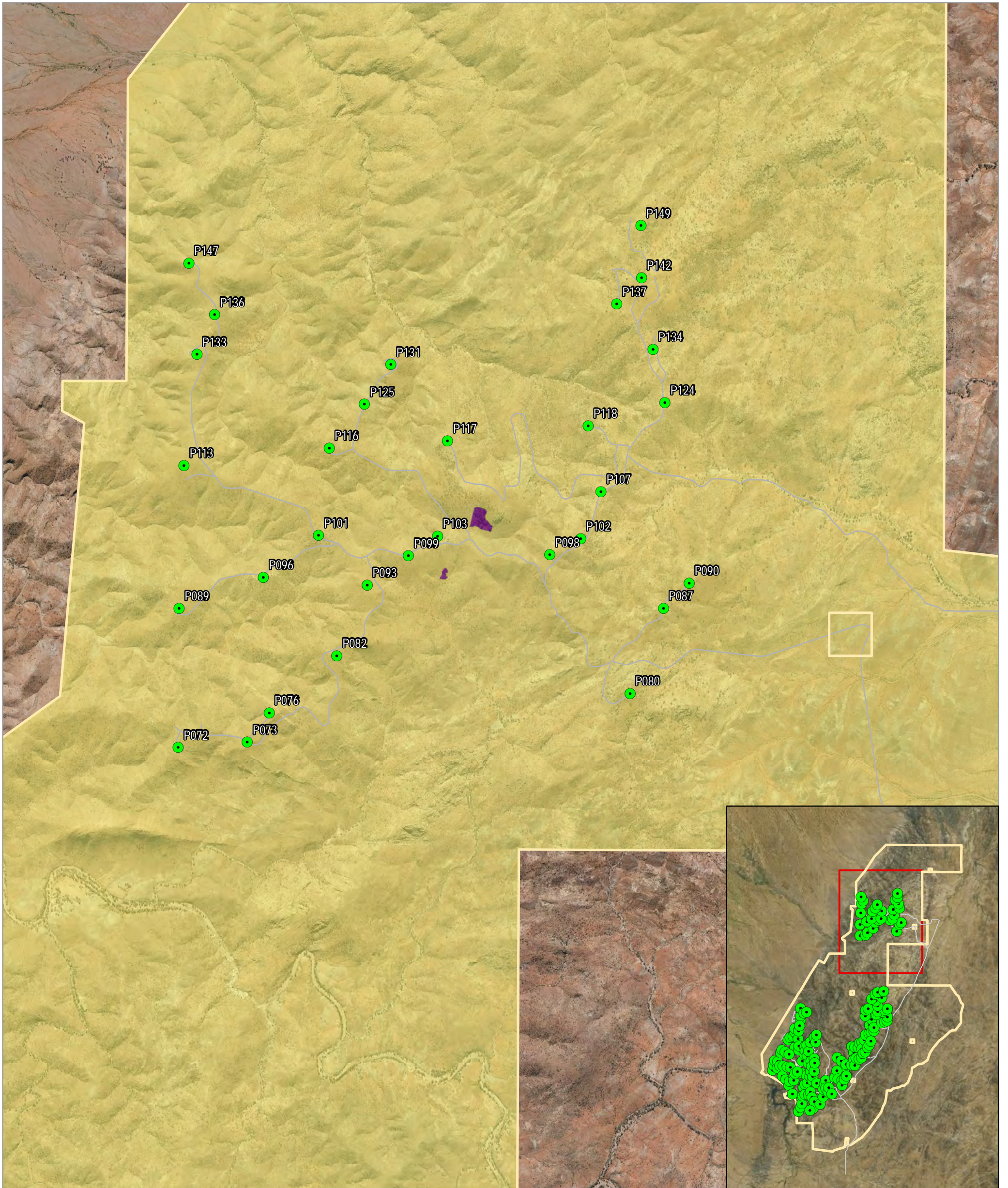


© AND © 2010 MapData Sciences Pty Ltd, PSMA © 2016 Microsoft Corporation








1:65,000  
0 1,000 2,000m

Date: 18/07/2016 Version: 2  
Coordinate system: MGA Zone 54



VEGETATION TYPES - NORTH

Silverton Wind Farm Mod 3


- |   |   |
|---|---|
|  Project area               | <b>Vegetation types</b>   |
|  Turbine location for Mod 3 |  Mulga - Dead finish (ID123)       |
|  Access tracks              |  Mulga/Red Mallee Shrubland (VEG1) |

0 200 400 800 Meters

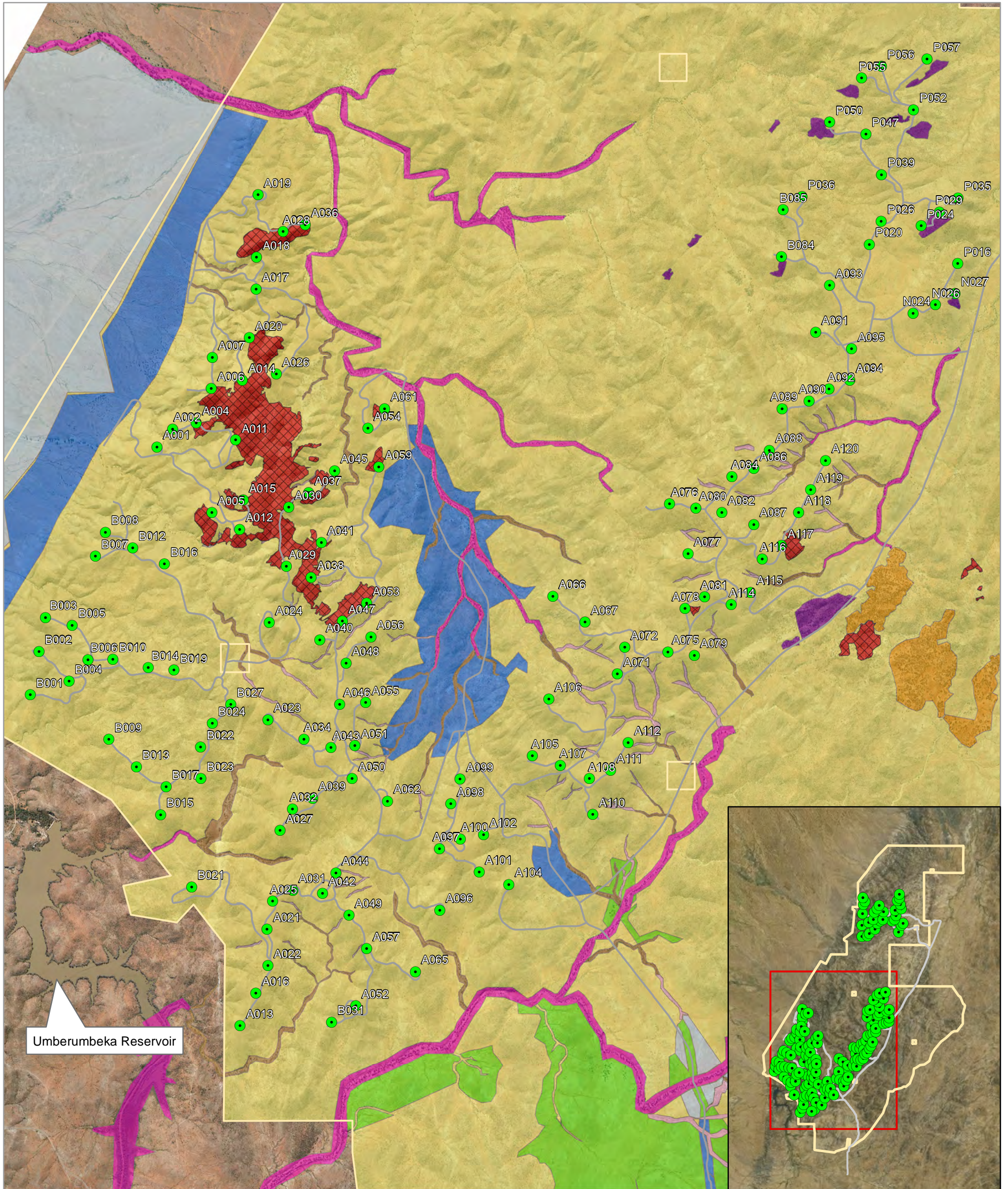
A3 @ 1:30000  
 Ref: 5395 1a 150716 v2  
 Author: JB

**ngh environmental**

www.nghenvironmental.com.au



Notes:  
 - Data collected by NGH Environmental (2012)  
 - Client data courtesy of Client, received 2013 and 2016



VEGETATION TYPES - SOUTH

Silverton Wind Farm Mod 3

- Turbine locations for Mod 3
- Access tracks
- Project area
- ⊠ CEEC NSW TSC
- Black Bluebush Shrubland (ID153)
- Bluebush Shrubland (ID155)
- Chenopod
- Chenopod - Red Mallee Woodland/Shrubland (VEG2)
- Mulga - Dead finish (ID123)
- Mulga/Red Mallee Shrubland (VEG1)
- Porcupine Grass sparse woodland (ID359) (CEEC)
- Prickly wattle Shrubland (ID136)
- River Red Gum on rocky creeks
- River Red Gum woodland (ID41)

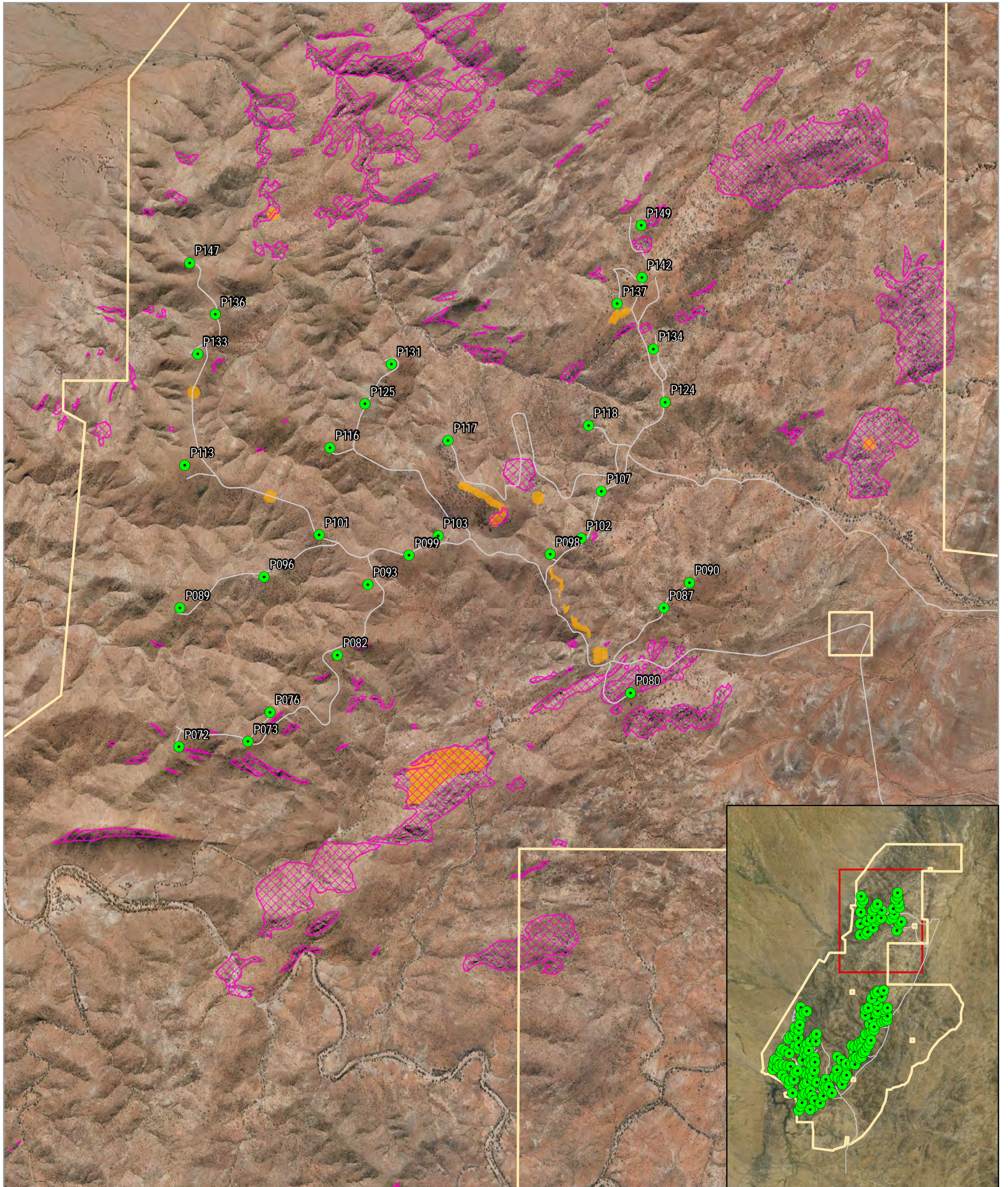
Notes:  
 - Data collected by NGH Environmental (2012)  
 - Client data courtesy of Client, received 2013 and 2016

0 0.5 1 2 Kilometres

A3 @ 1:46000  
 Ref: 5395 1b 180716 v3  
 Author: JB

**ngh environmental**

www.nghenvironmental.com.au



FAUNA FEATURES - NORTH

Silverton Wind Farm Mod 3

- Project area
- Barrier Range Dragon habitat hotspots
- Turbine locations for Mod 3
- Significant rock outcrop (potential dragon habitat)
- Access tracks

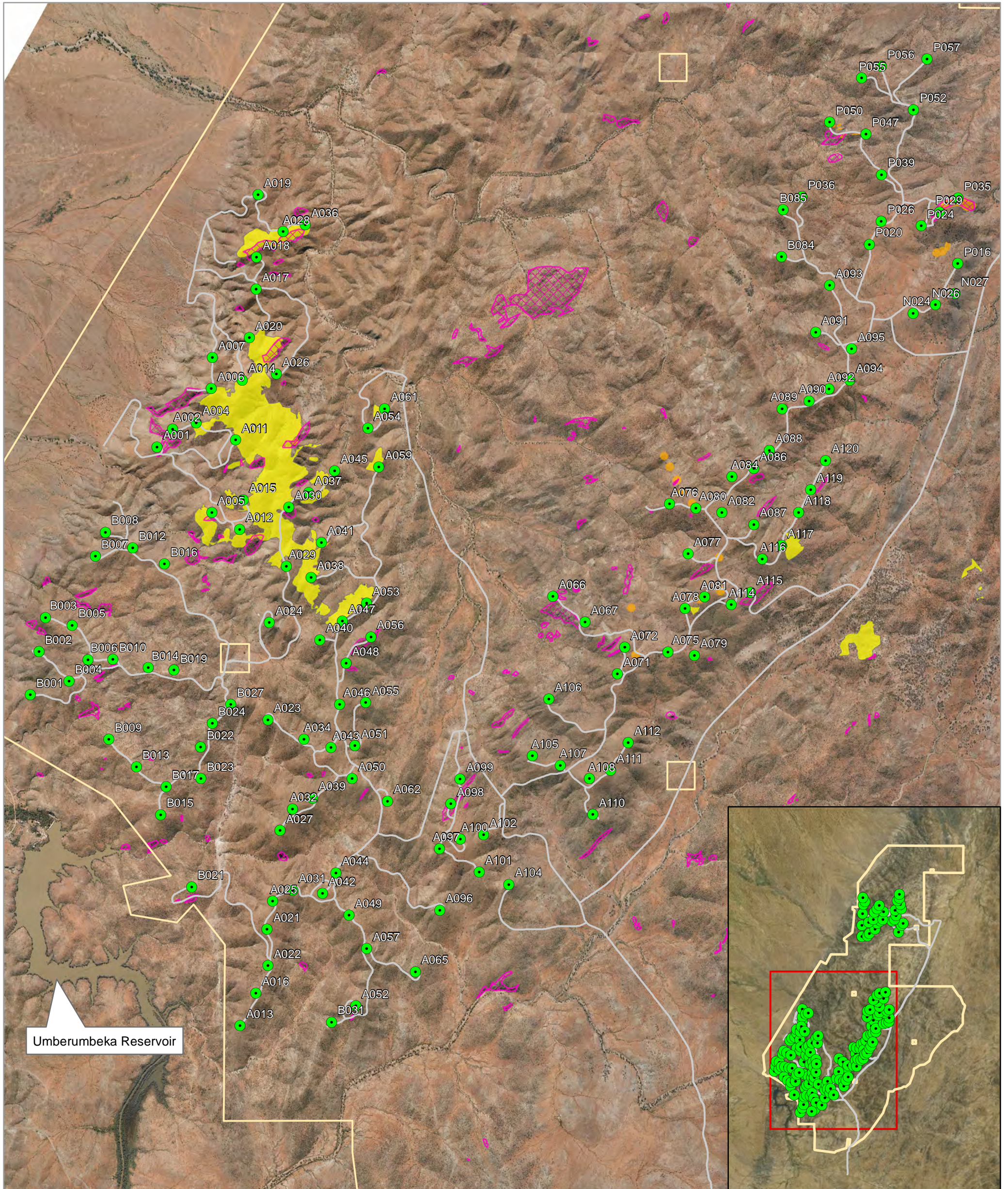
0 200 400 800 Meters

A3 @ 1:30000  
 Ref: 5395 2b 150716 v1  
 Author: JB

**ngh environmental**

www.nghenvironmental.com.au

Notes:  
 - Data collected by NGH Environmental (2012)  
 - Client data courtesy of Client, received 2013 and 2016



FAUNA FEATURES - SOUTH

Silverton Wind Farm Mod 3

- Turbine locations for Mod 3
- Barrier Range Dragon habitat hotspots
- Access tracks
- Spinifex (Porcupine CEEC)
- Project area
- Significant rock outcrop (potential dragon habitat)

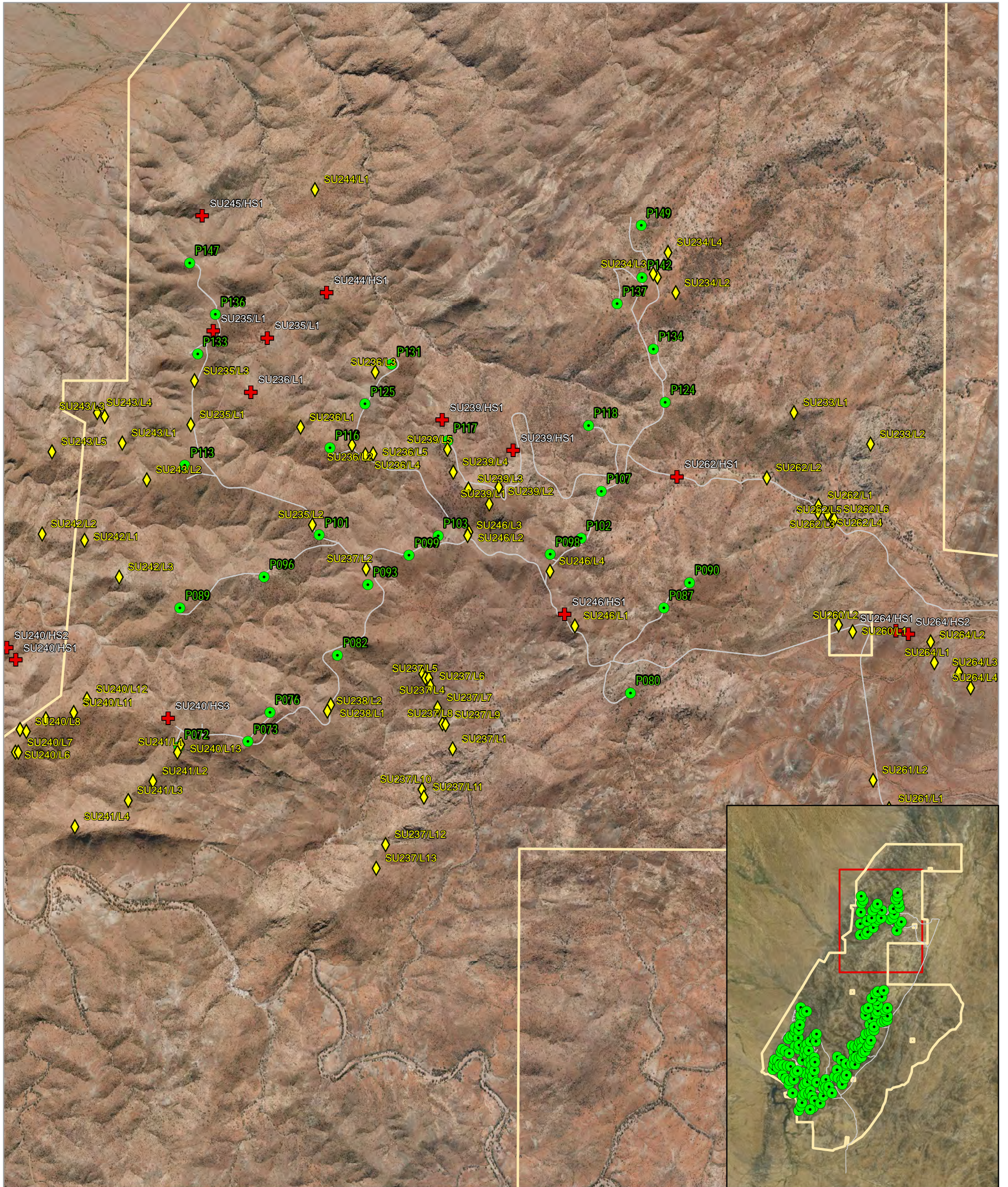
Notes:  
 - Data collected by NGH Environmental (2012)  
 - Client data courtesy of Client, received 2013 and 2016

0 0.5 1 2 Kilometres

A3 @ 1:46000  
 Ref: 5395 2b 190716 v2  
 Author: JB

**ngh environmental**

www.nghenvironmental.com.au



HERITAGE FEATURES - NORTH

Silverton Wind Farm Mod 3

- Project area
- Turbine locations for Mod 3
- Access tracks
- ◆ Indigenous sites
- + Non-indigenous sites

0 200 400 800 Meters

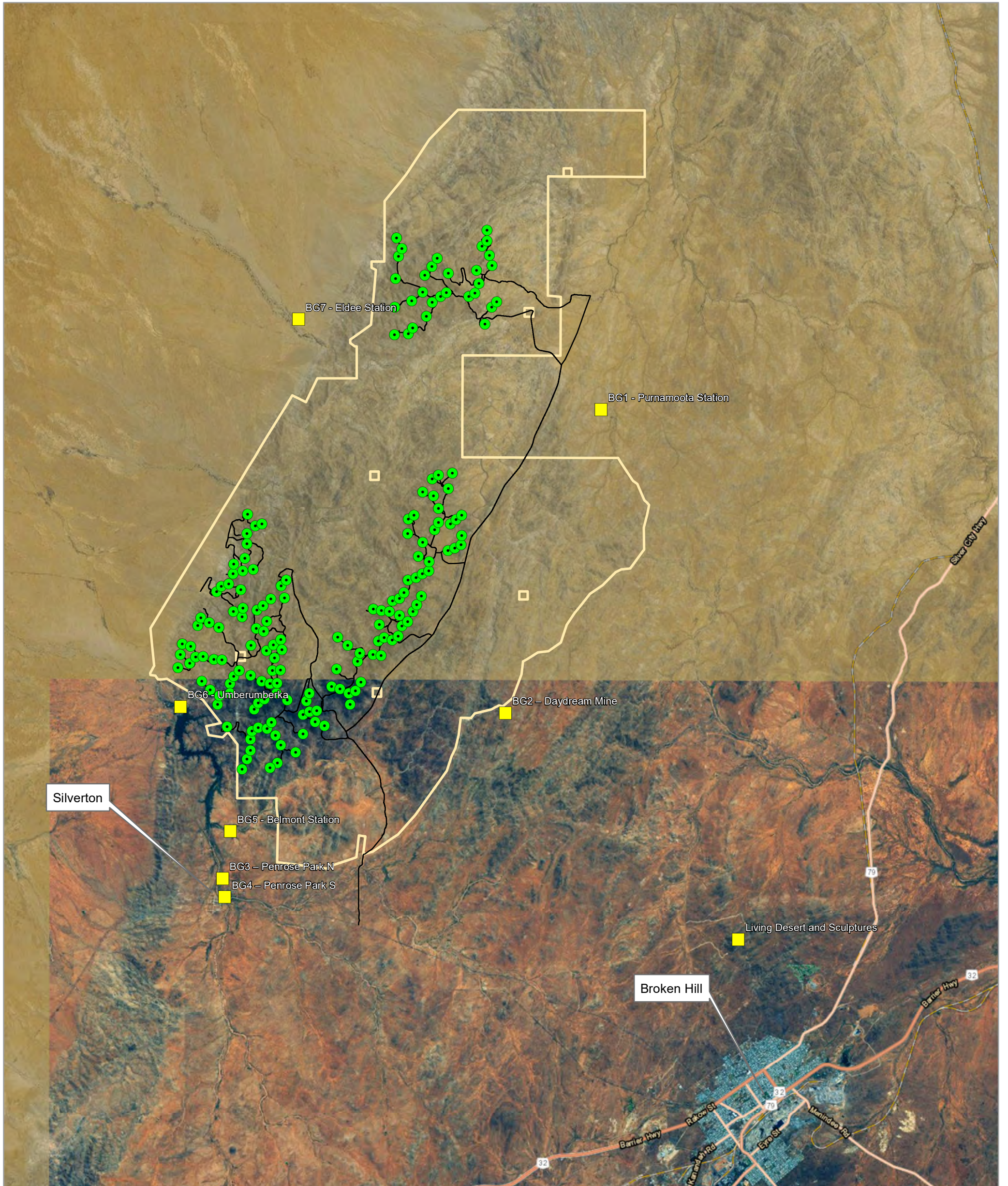
A3 @ 1:30000  
 Ref: 5395 3a 150716 v1  
 Author: JB

**ngh environmental**

www.nghenvironmental.com.au

Notes:  
 - Data collected by NGH Environmental (2012)  
 - Client data courtesy of Client, received 2013 and 2016





RECEIVERS

Silverton Wind Farm Mod 3

- Receivers
- Turbine locations for Mod 3
- Access tracks
- Project area

Notes:  
 - Data collected by NGH Environmental (2012)  
 - Client data courtesy of Client, received 2013 and 2016

0 1 2 4 Kilometers

A3 @ 1:150000  
 Ref: 5395 4 180716 v2  
 Author: JB

**ngh environmental**

www.nghenvironmental.com.au