

**Silverton Wind Farm NSW Stage 1
Aboriginal Heritage and Non Indigenous Heritage Assessment
Volume 2**

January 2008

A report to ngenvironmental on behalf of
Silverton Wind Farm Developments



Julie Dibden
New South Wales Archaeology Pty Limited
PO Box 2135 Central Tilba NSW 2546
Ph/fax 02 44737947 mob. 0427074901
julie@nswarchaeology.com.au

TABLE OF CONTENTS

Appendix 1 Maps of Silverton Wind Farm Proposal.....	1
Appendix 2 Maps of Survey Units.....	4
Appendix 3 Aboriginal Heritage Sites Gazetteer.....	18
Appendix 4 Non Indigenous Heritage Items Gazetteer.....	92
Appendix 5 Aboriginal and Non Indigenous Heritage Sensitivity Mapping.....	105
Appendix 6 Previously Recorded Non Indigenous Heritage Items	112
Appendix 7 Statements of Heritage Impact: Non Indigenous Heritage	126

APPENDIX 1
MAPS OF SILVERTON STAGE 1 PROJECT AREA

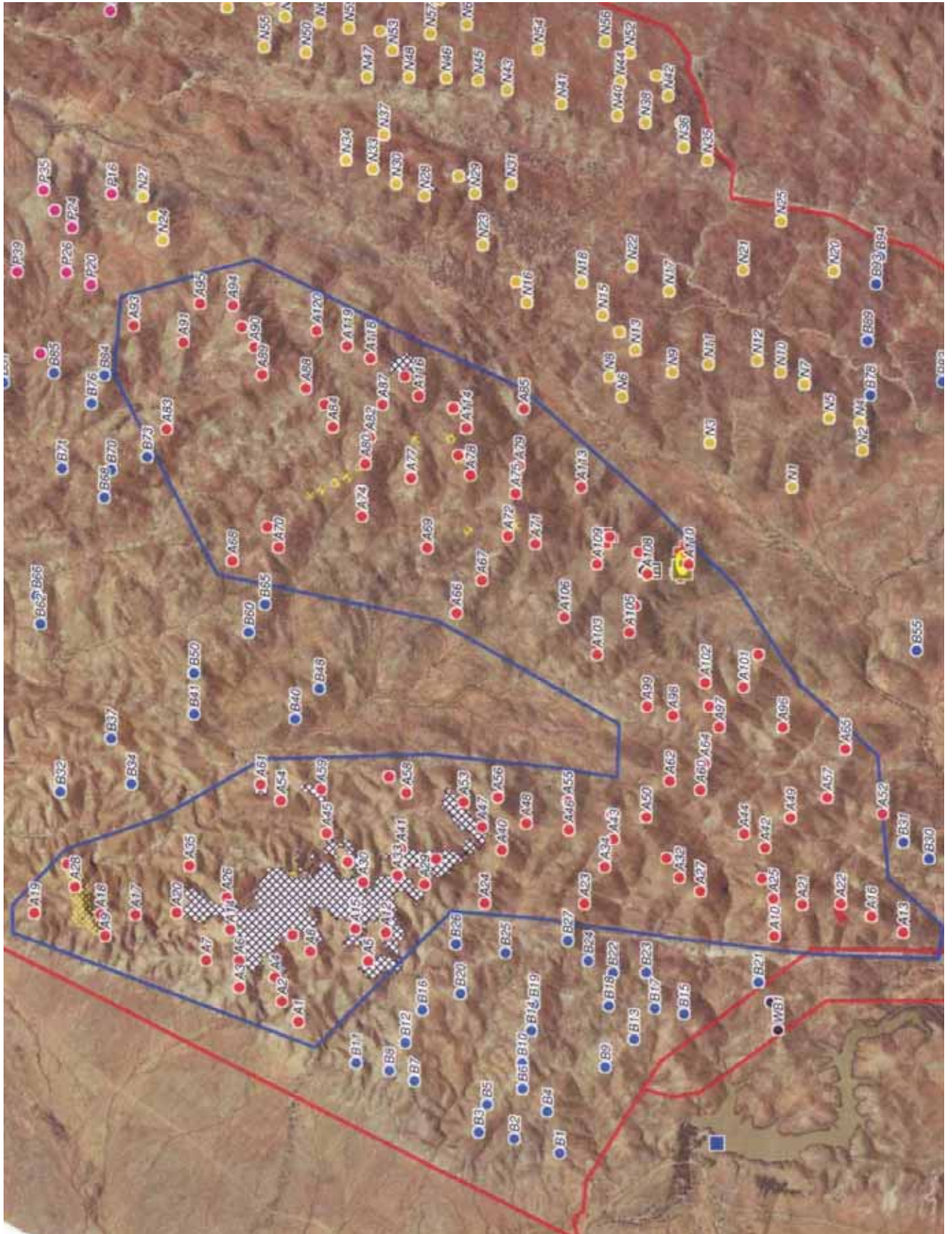


Figure 1. Silverton Wind Farm proposed turbine area defined by blue line; turbine layout approximate only.

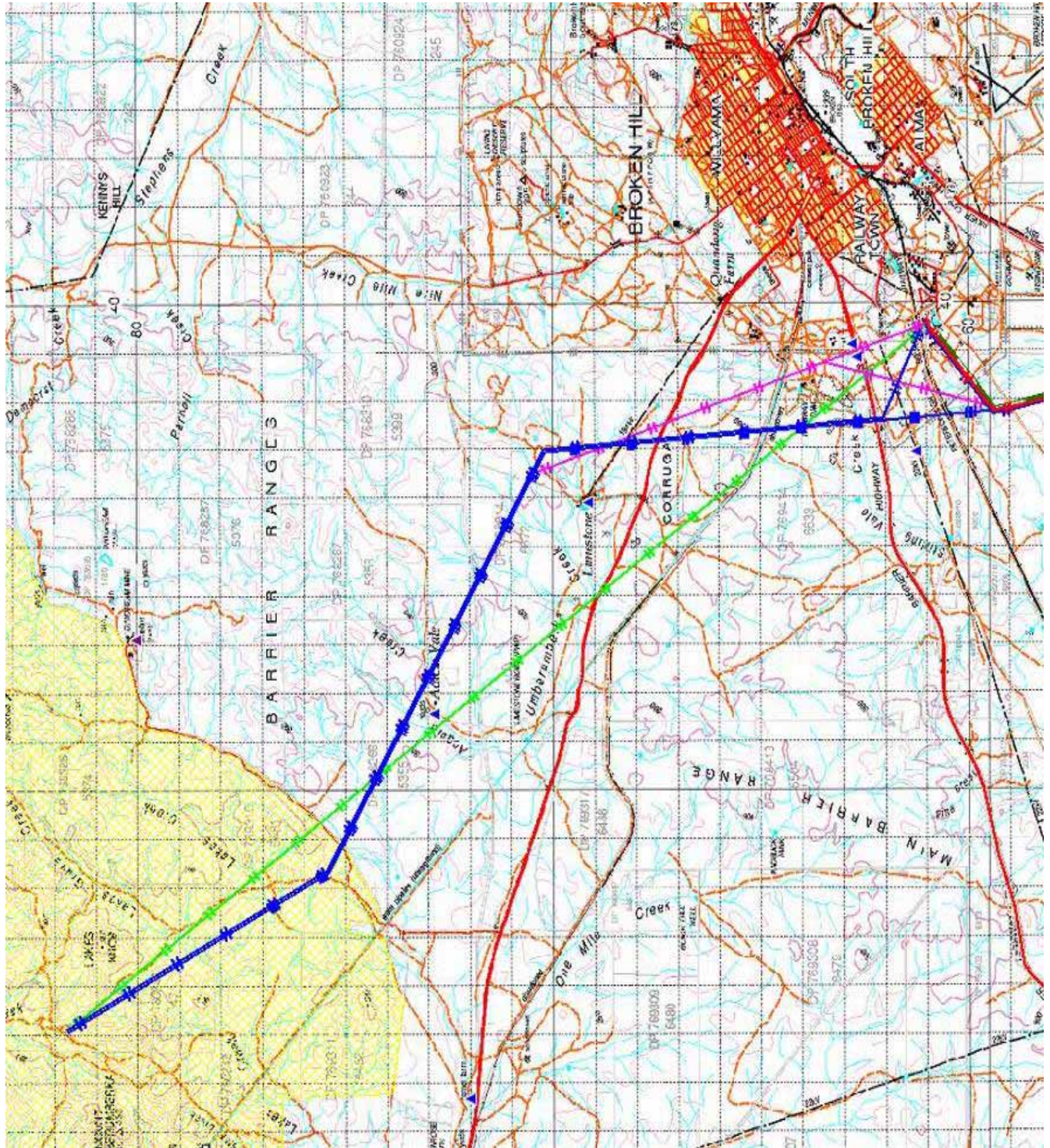


Figure 2. Layout of proposed transmission line from Stage 1 turbine area to Broken Hill; initial route green line and visual impact minimised route blue line.