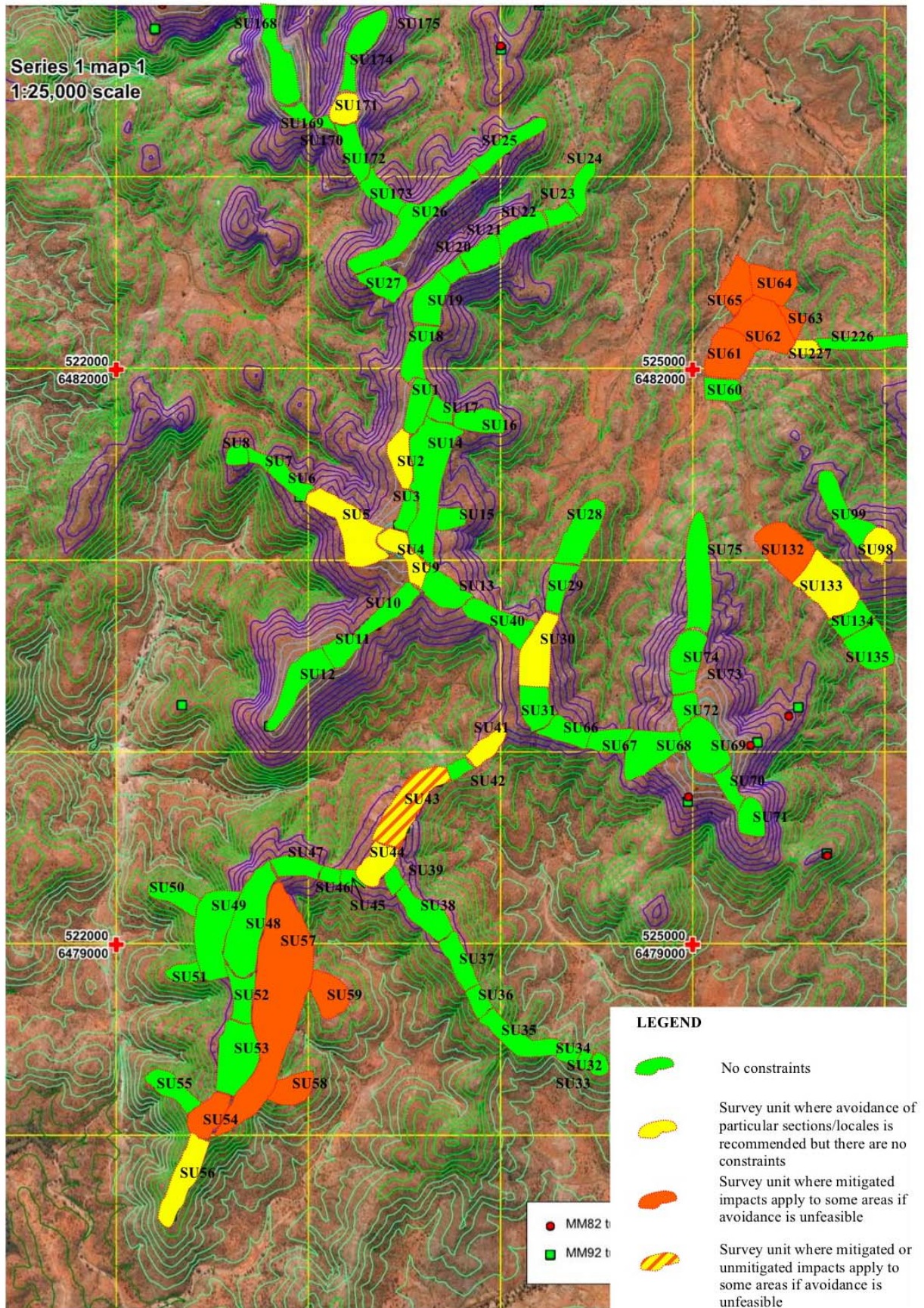
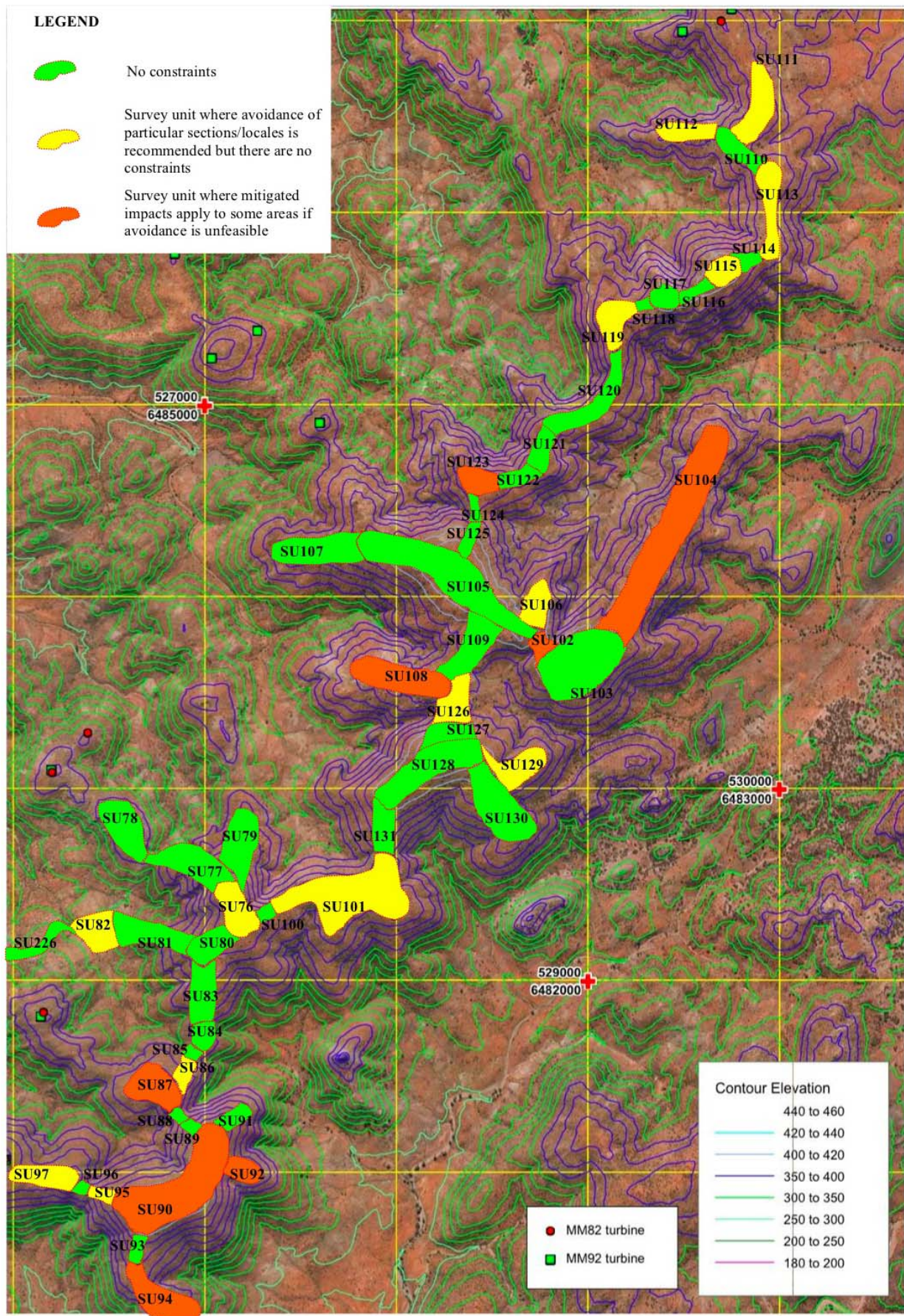


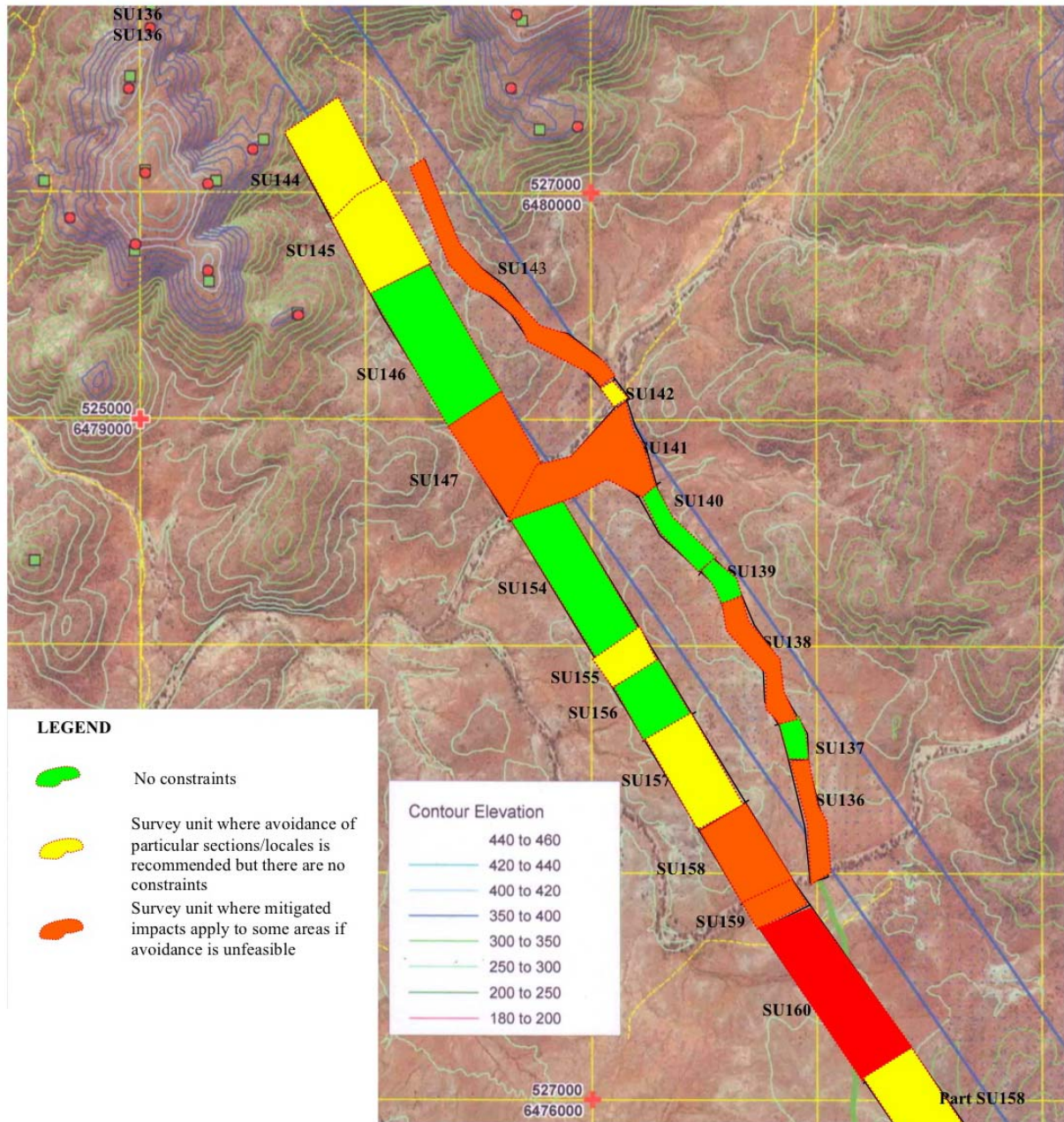
APPENDIX 5
ABORIGINAL AND NON INDIGNEOUS SENSITIVITY MAPPING



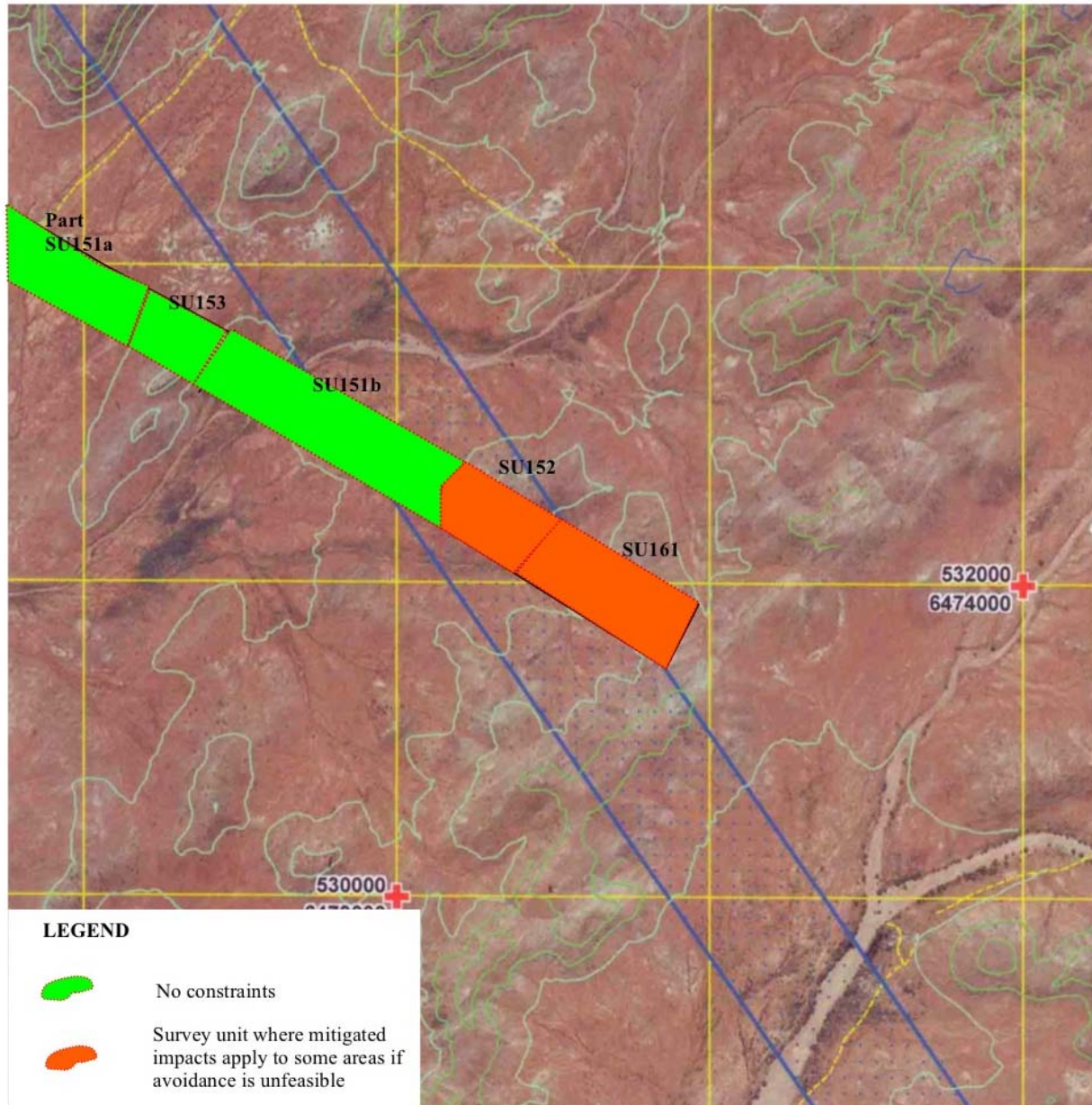
Map 1. Constraints mapping for Survey Units 1-76, 98-99 and Survey Units 132-135.



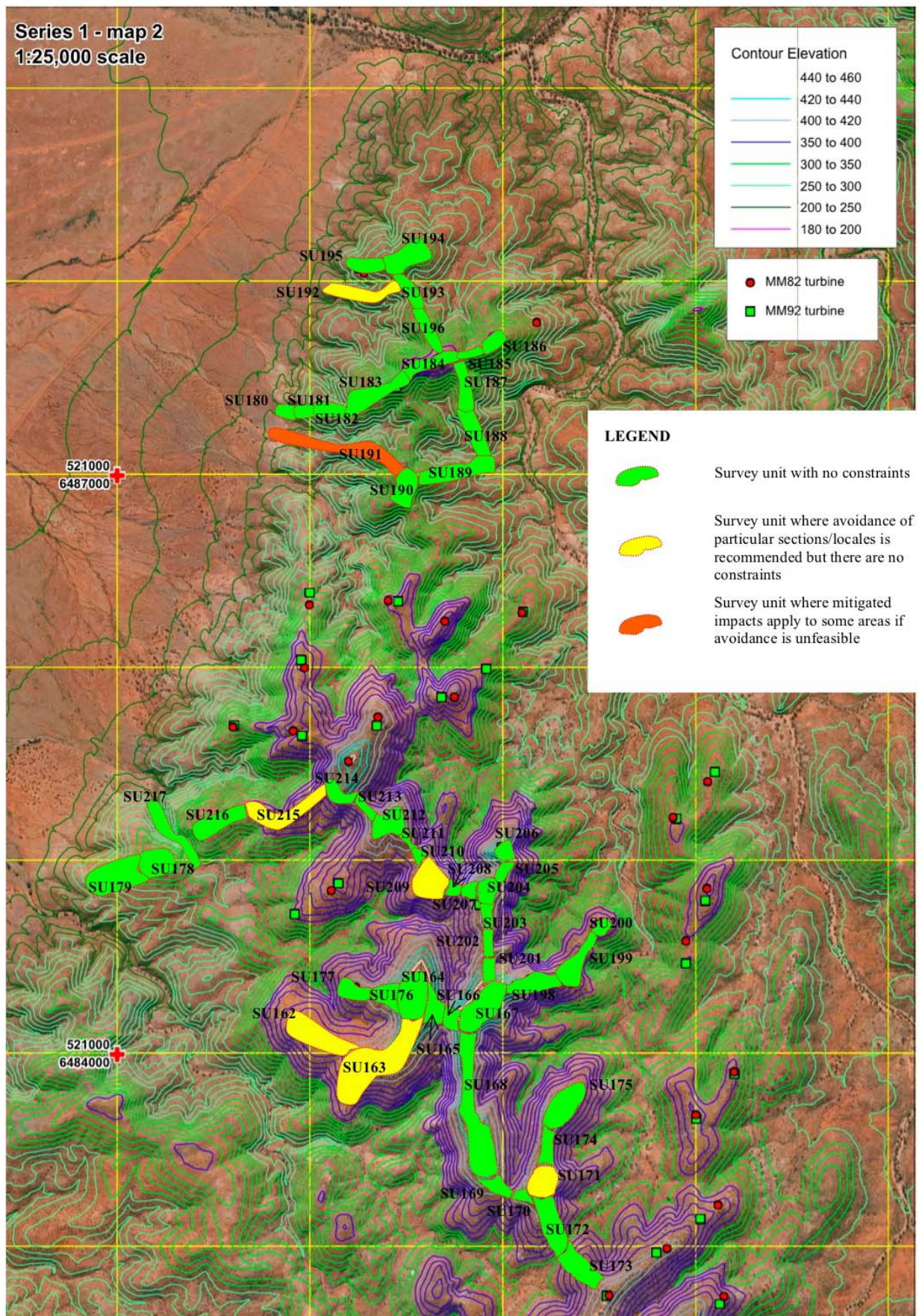
Map 2. Constraints mapping for Survey Units 76-97, 100-131 and part of Survey Unit 226.



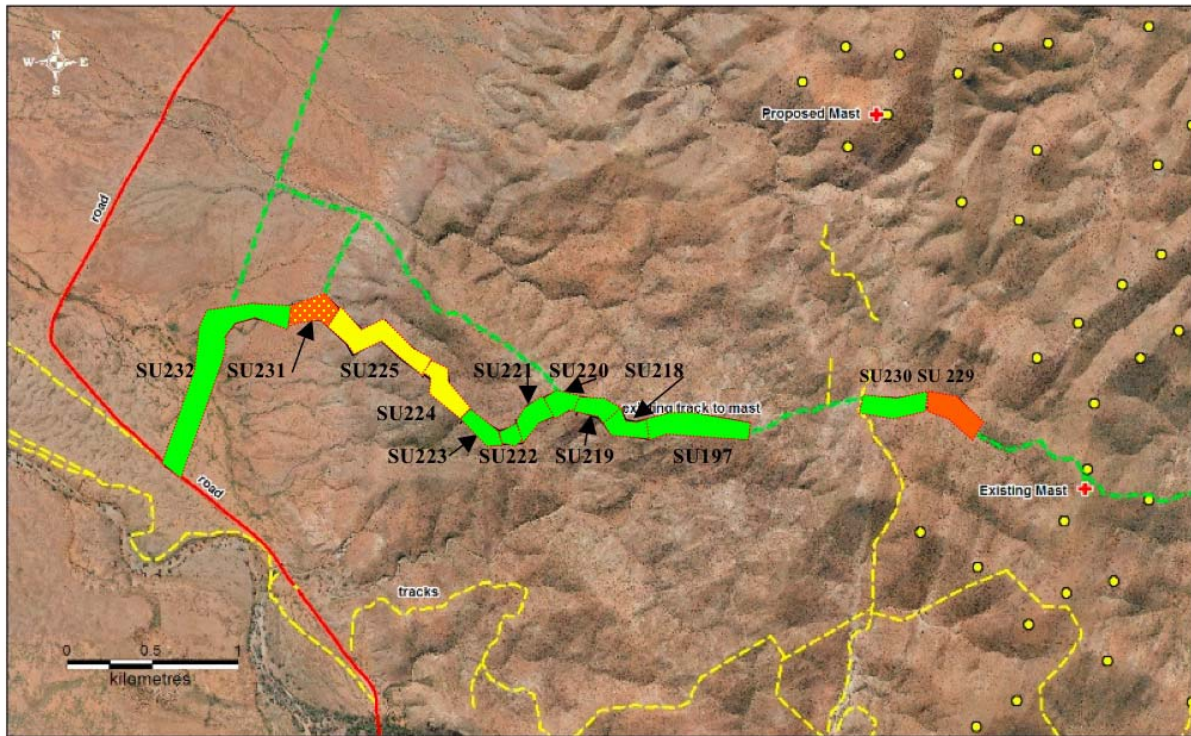
Map 3. Constraints mapping for Survey Units 136-147, 154-160 and part of Survey Unit 158







Map 4. Constraints mapping for Survey Unit 151a, Survey Units 151b-153, and Survey Unit 161.



Map 5. Constraints mapping for Survey Units 162-196 and Survey Units 198-216.



LEGEND

-  No constraints
-  Survey unit where avoidance of particular sections/locales is recommended but there are no constraints
-  Survey unit where mitigated impacts apply to some areas if avoidance is unfeasible
-  Survey unit where avoidance of a particular locale is recommended; locale is potentially of high significance

Map 6. Constraints mapping for Survey Units 197, 218-225, 229-230 and Survey Units 231-232.