

Introduction

The proposed Silverton Wind Farm is a world scale wind energy development of up to 598 wind turbine generators located on the Barrier Ranges near Broken Hill in far west New South Wales. The wind farm will generate over 1000MW of clean renewable energy, enough to provide 4.5% of the current electricity consumption of NSW.

Silverton Wind Farm Developments

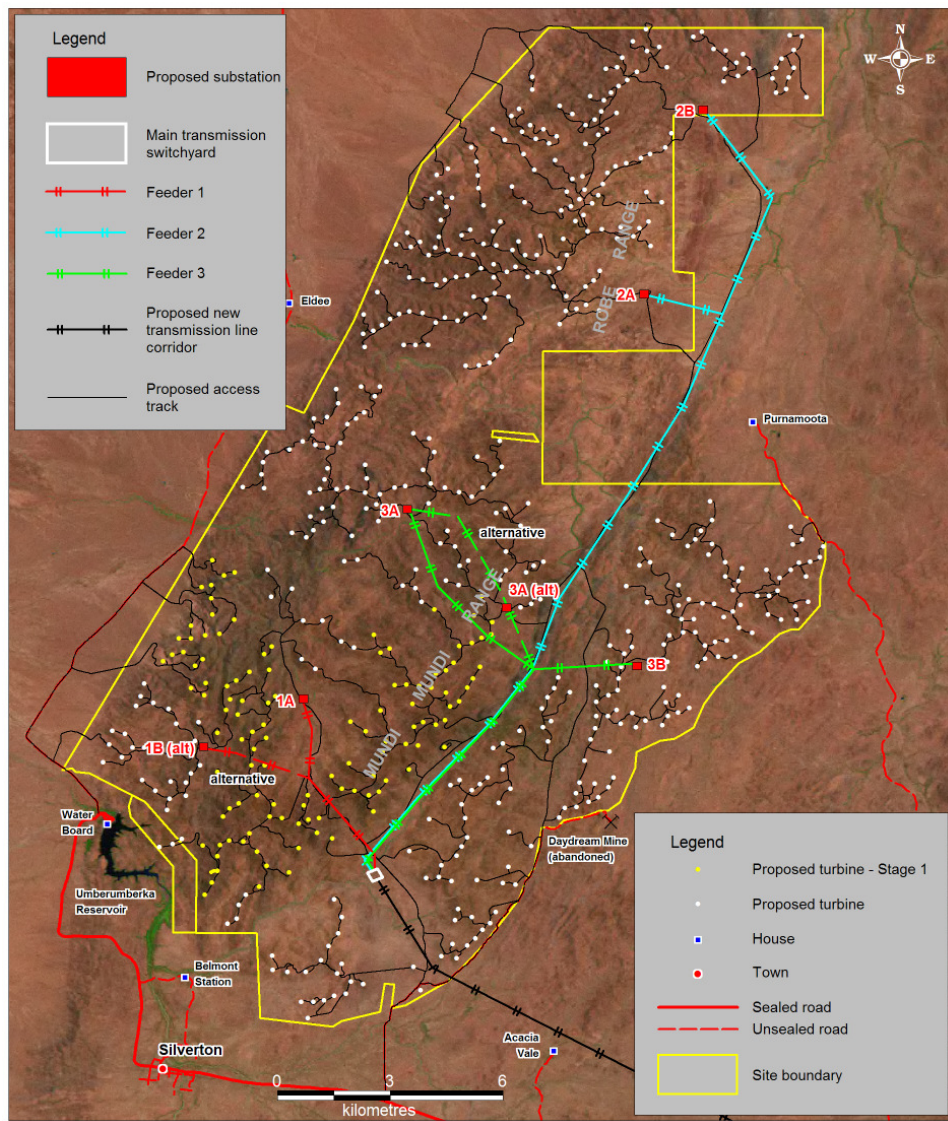
In December 2007 Epuron Pty Ltd and Macquarie Capital Group Limited formed a joint venture to develop the project through the joint venture company Silverton Wind Farm Developments Pty Ltd (SWFD). This combines the wind farm development expertise of Epuron with the financial strength of the Macquarie Group.

Environmental Assessment

The Environmental Assessment (EA) of the proposed Silverton Wind Farm is nearing completion, and is expected to be lodged shortly with the Department of Planning.

Once finalised, this Development Application and Environmental Assessment will be made available to the community through the Department of Planning website, the SWFD website (www.silvertonwindfarm.com.au) and in hard copy in Broken Hill, Sydney, Mildura and Silverton.

The local and regional community will be encouraged to provide comment and feedback on the proposal prior to a determination by the Department of Planning.



Project Outline

The proposal includes:

- Up to 598 wind turbines, each with three blades mounted on a tubular steel tower and a generator transformer inside or adjacent to each tower
- Electrical connections between wind turbines and the site substations
- Site substations to convert from reticulation voltages (22–66 kV) to medium voltages (66–220 kV) for connection with the transmission system
- An onsite transmission switchyard that includes high voltage transformers and switchgear for connecting the output of the wind farm to offsite transmission lines
- A new 24 km transmission line connecting the transmission switchyard with Transgrid's existing Broken Hill substation (20 km offsite)
- A new 305 km transmission line connecting the transmission switchyard with SP-Ausnet's existing Red Cliffs substation in Victoria (301 km offsite)
- Onsite control and maintenance buildings, including storage facilities for equipment, materials and spares and workers facilities building
- Internal access tracks, hardstand areas and other associated infrastructure required for the construction, installation and maintenance of the wind farm
- Minor upgrades to site access via the Silverton Road, Eldee Station Road and Daydream Mine Road

The project will be described fully in the Environmental Assessment which will be made publicly available once finalised and lodged with the Department of Planning

Project Benefits

The project offers the following broad benefits:

- Production of approximately 3,500,000 MWh of renewable electricity per annum, sufficient for the average consumption of around 437,500 homes
- Reduction in greenhouse gas emissions of approximately 3.5 million tonnes of carbon dioxide (equivalent) per annum, the equivalent of taking 700,000 cars off our roads
- Savings in water consumption of approximately 4,600 million litres per annum of potable water
- Annual savings in pollution from coal-fired power stations of up to 18,760 tonnes of sulphur dioxide, 8,365 tonnes of nitrogen oxides and 535,000 kilograms of particulates

Community Benefits

The wind farm will provide:

- more than 700 jobs over the five year construction period and up to 120 jobs in operation and maintenance of the wind farm over its 30 year life.
- a new landmark for tourism to the region which is expected to provide further economic benefits to the communities of Silverton and Broken Hill.
- a community fund for community activities such as event sponsorship, tourism promotion, community parklands and scholarships.
- the 'Solar Silverton' initiative will provide local residents with a clean energy package including energy efficiency tips and solar energy appliances.
- improved infrastructure for the local region

Community Consultation

SWFD is engaged with the local community to understand impacts and look for local opportunities which could be promoted at the same time as the wind farm. In particular, SWFD is seeking input in relation to the proposed community fund to determine community projects which could be promoted under the fund.

Copies of final documentation will be available from SWFD once the applications are lodged

SWFD encourages community members and groups to contact us in relation to the project.

Contact us:

Silverton Wind Farm Developments Pty Ltd
Level 11, 75 Miller Street
North Sydney NSW 2060

Phone: 02 8456 7400
Fax: 02 9922 6645
Email: info@silvertonwindfarm.com.au