



SILVERTON WIND FARM

Community Update – October 2007

INTRODUCTION

EPURON has commenced investigations into a potential new Wind Farm on the Mundi Mundi Range located north of Silverton in western NSW. At this stage EPURON does not have exact details on the possible number or location of turbines. This and other more detailed information will follow in updates over the coming months. This newsletter outlines the area under study and the opportunities for community participation in relation to the development.

SILVERTON WIND FARM INVESTIGATION AREA

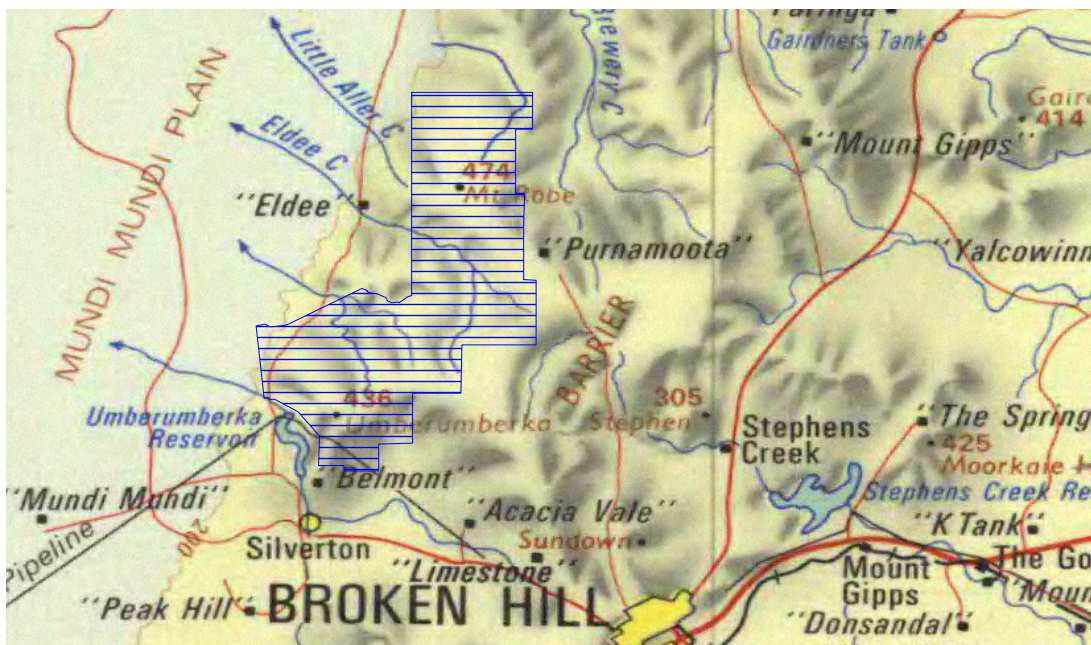


Figure 1 – Project Investigation Area

What is being investigated?

The investigation area includes the Mundi Mundi and Robe Ranges north of Silverton as shown in the map above. EPURON has been monitoring the wind conditions since May this year and the results to date are very positive.

This site is potentially one of the best and largest wind farm sites in Australia, due to the good wind resource, the space available, and the potential to connect to the high voltage power lines in Broken Hill.

The development of the site is likely to be carried out in stages. The first stage of the development is in the southern end of the ranges and could involve up to 150 turbines. Subsequent stages may see up to 500 wind turbines in the area outlined.

A new powerline would connect the project back to Broken Hill.

What does this mean?

In a typical year, Stage 1 could supply enough power for up to 100,000 typical NSW homes. If 500 turbines were installed they could supply up to 400,000 homes with electricity in a typical year. This is the equivalent of around 4.5% of the NSW electricity demand.

This electricity will be generated without the emission of any greenhouse gases, without the consumption of any water, and will not contribute to global warming; in fact it will help to reduce the carbon footprint of Australia.

The local community will benefit through a very large number of construction and operational jobs. These will include jobs covering civil and electrical construction, operation and maintenance, and services to support these workers.

As one of the worlds largest wind farms, EPURON also expects that the project could increase tourism in the area.



POTENTIAL BENEFITS

NSW needs more power generation to meet increased customer demand and a higher proportion of renewable energy to reduce greenhouse gas emissions from carbon based fuels.

Wind energy provides:

- Clean, renewable energy, with no water used in generation
- Reduced pollution and greenhouse gas emissions, leading to a better environment for future generations
- Income, employment and investment opportunities for regional NSW

COMMUNITY INVOLVEMENT

What is the process?

EPURON expects to finalise its development and lodge the Development Approval from the NSW Government early in 2008, with construction likely to commence in late 2009.

EPURON will undertake investigations into the design of the project and the assessment of impacts from the proposal. Studies will include:

- flora and fauna assessments including bird and bat studies;
- Aboriginal and other historic heritage;
- visual impact assessments;
- noise assessments;
- television and radio interference; and
- traffic and transport impacts.

The environmental assessments will provide feedback into the design process to ensure impacts are considered and the designs modified accordingly. These studies will be carried out by independent contractors with input sought from the community.

The Environmental Assessment will form part of the development approval process submitted to the Department of Planning (Consent Authority) to be considered under Part 3A (Major Projects) of the Environmental Planning and Assessment (EP&A) Act.

Indicative timeframe

Sep – Dec 07	Specialist studies Commence Community Consultation
Jan 08 – Mar 08	Finalise Environmental Assessment Development Application Lodged Public Exhibition and comment
Apr 08 onwards	Assessment by NSW Department of Planning

HAVING YOUR SAY

Input from the Community

EPURON is in the early stages of the design and feasibility of the wind farm and would like to find out what you think so that:

- all relevant issues are considered by EPURON in the assessment of the project; and,
- the community is fully informed as to the development.

We hope to ensure strong local community support for the wind farm. However, we recognize that opinions in relation to wind farms are a very personal matter. The aim of consultation is to determine how to develop the best wind farm possible on this site.

Our aim is to ensure that we identify and where possible mitigate the potential impacts of the wind farm. We have a strong track record of modifying our proposed developments based on community input to specific issues.

Community Consultation Opportunities

EPURON will provide information and consult with the local community, Council and other stakeholders regarding the project. This will include regular newsletters, personal meetings, and an open house forum to gain and contribute information to the project proposal.

At this stage we would appreciate if all people interested in the project would provide their name, address, phone number and email address so we can keep you informed. We will alert the local media as well, so please watch your local papers.

Project updates – register your interest

Write to us: Silvertown Wind Farm
EPURON Pty Ltd
104 / 349 Pacific Highway
NORTH SYDNEY NSW 2060

Contact: Madeline Cowley
Project Manager
Phone: 02 9922 7771
Fax: 02 9922 6645
Email: Silvertown@epuron.com.au

WHO IS EPURON?

EPURON Pty Ltd (formerly Taurus Energy Pty Ltd) is a NSW based renewable energy company active in the development of wind and solar projects. EPURON has received development consent for three wind energy projects in NSW at Snowy Plains (near Berridale), Cullerin Range (near Breadalbane) and Conroy's Gap (near Yass).

EPURON is part of international renewable energy company EPURON GmbH.