

2.4 Community newsletters



GULLEN RANGE WIND FARM

Community Update – July 2007

INTRODUCTION

EPURON has commenced investigations into the potential of the Gullen Range and surrounding ridges to support a new Wind Farm. This newsletter outlines the area under study and the opportunities for community participation in relation to the development.

At this stage EPURON is just starting its investigation of the project and does not have exact details on the possible number or location of turbines. This and other more detailed information will follow in updates over the coming months.

GULLEN RANGE WIND FARM INVESTIGATION

The study area outlined below is a long elevated ridgeline system running approximately 22 kilometres north-south. Wind monitoring has proven this ridge to have some of the highest wind speeds in NSW.

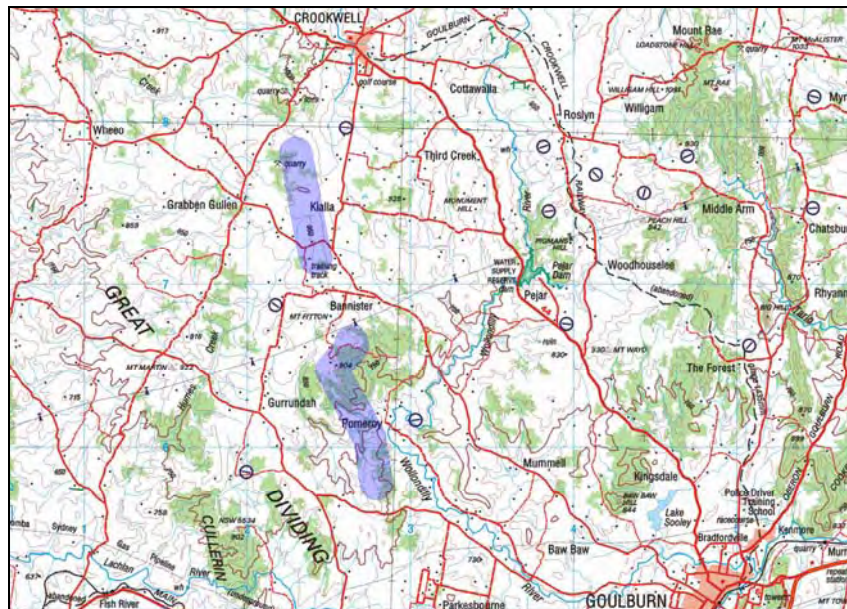


Figure 1 – Project Investigation Area

What is being investigated?

During the investigation, EPURON will determine the potential for a wind farm in this area.

This investigation will include engagement with the community to exchange information and also understand specific issues in relation to the project area.

A number of specialist reports will be prepared to better understand and mitigate likely project impacts.

EPURON will use this information to help determine the number and location of turbines proposed, as well as the associated infrastructure including roads, electrical connection by underground or overhead powerlines, the substation and control buildings.

The wind farm will use the latest technology wind turbines. It is expected that 40 - 80 wind turbines would be proposed for the area.

Project background

In 2002, Marubeni Corporation installed wind monitoring towers on the ridgeline at Kialla, Bannister and Gurrundah. This work was well publicised at the time, with at least one community newsletter outlining the proposed Bannister wind farm.

In mid 2006 EPURON purchased the monitoring towers and data primarily to help assess wind speeds at the Cullerinn Range Wind Farm to the south. The wind data recorded on the site also showed there are consistent and high wind speeds that would support a wind farm.

In November 2006, the NSW Government announced a new target to increase the amount of renewable energy supplied in NSW from 10% to 15% of consumption.

This new target will require a major increase in wind energy use and has led to EPURON now assessing the potential of the area to host a new wind farm.



POTENTIAL BENEFITS

NSW needs more power generation to meet increased customer demand and a higher proportion of renewable energy to reduce greenhouse gas emissions from carbon based fuels.

Wind energy provides:

- Clean, renewable energy, with no water used in generation
- Reduced pollution and greenhouse gas emissions, leading to a better environment for future generations
- Income, employment and investment opportunities in regional NSW

In addition, EPURON would establish a community fund to broaden the benefits of any wind farm across the wider community.

COMMUNITY INVOLVEMENT

What is the process?

EPURON will undertake investigations into the design of the project and the assessment of impacts from the proposal. Studies will include:

- background noise measurements;
- visual impact assessments;
- flora and fauna assessments including bird and bat studies;
- television and radio interference;
- Aboriginal and other historic heritage; and
- traffic and transport impacts.

The environmental assessments will provide feedback into the design process to ensure impacts are considered and the designs modified accordingly. These studies will be carried out by independent contractors with input sought from the community.

The Environmental Assessment will form part of the development approval process submitted to the Department of Planning (Consent Authority) to be considered under Part 3A (Major Projects) of the Environmental Planning and Assessment (EP&A) Act.

Indicative timeframe

July – Nov 07	Specialist studies Community Consultation
Nov 07 – Jan 08	Finalise Environmental Assessment Development Application Lodged Public Exhibition and comment
Feb 08 -	Assessment by Dept. of Planning

HAVING YOUR SAY

Input from the Community

EPURON wishes to engage with the local community to ensure that:

- all relevant issues are considered by EPURON in the assessment of the project; and,
- the community is fully informed as to the development.

We hope to ensure strong local community support for the wind farm. However, we recognize that opinions in relation to wind farms are a very personal matter. The aim of consultation is to determine how to develop the best wind farm possible on this site.

Our aim is to ensure that we identify and where possible mitigate the potential impacts of the wind farm. We have a strong track record of modifying our proposed developments based on community input to specific issues.

Community Consultation Opportunities

EPURON will provide information and consult with the local community, Council and other stakeholders regarding the project. This will include regular newsletters, personal meetings, and an open house forum to gain and contribute information to the project proposal.

At this stage we would appreciate if all people interested in the project would provide their name, address, phone number and email address so we can keep you informed. We will alert the local media as well, so please watch your local papers.

Project updates – register your interest

Write to us: Gullen Range Wind Farm
EPURON Pty Ltd
104 / 349 Pacific Highway
NORTH SYDNEY NSW 2060

Contact: Simon Davey
Project Manager
Phone: 02 9922 7771
Fax: 02 9922 6645
Email: GullenRange@epuron.com.au

WHO IS EPURON?

EPURON Pty Ltd (formerly Taurus Energy Pty Ltd) is a NSW based renewable energy company active in the development of wind and solar projects. EPURON has received development consent for three wind energy projects in NSW at Snowy Plains (near Berridale), Cullerin Range (near Breadalbane) and Conroys Gap (near Yass).

EPURON is part of international renewable energy development company EPURON GmbH.



GULLEN RANGE WIND FARM

Community Update No. 2 – November 2007

INTRODUCTION

Since the last newsletter was distributed in July, EPURON has undertaken environmental and engineering investigations into the proposed Gullen Range wind farm project. These studies have included ecology, archaeology, visual, traffic and transport, background noise assessment and communications studies.

This newsletter outlines the details of the proposal and invites the community to an Open House / Information Day. This is an opportunity to discuss the project in more detail and for the community to provide feedback.

GULLEN RANGE WIND FARM PROPOSAL

The study area is a long elevated ridgeline system running approximately 22 kilometres north-south. Wind monitoring has proven this ridge to have some of the highest wind speeds in NSW. The boundary of the proposal is presented below and the blue line represents a distance of 5km from the proposed turbine locations.

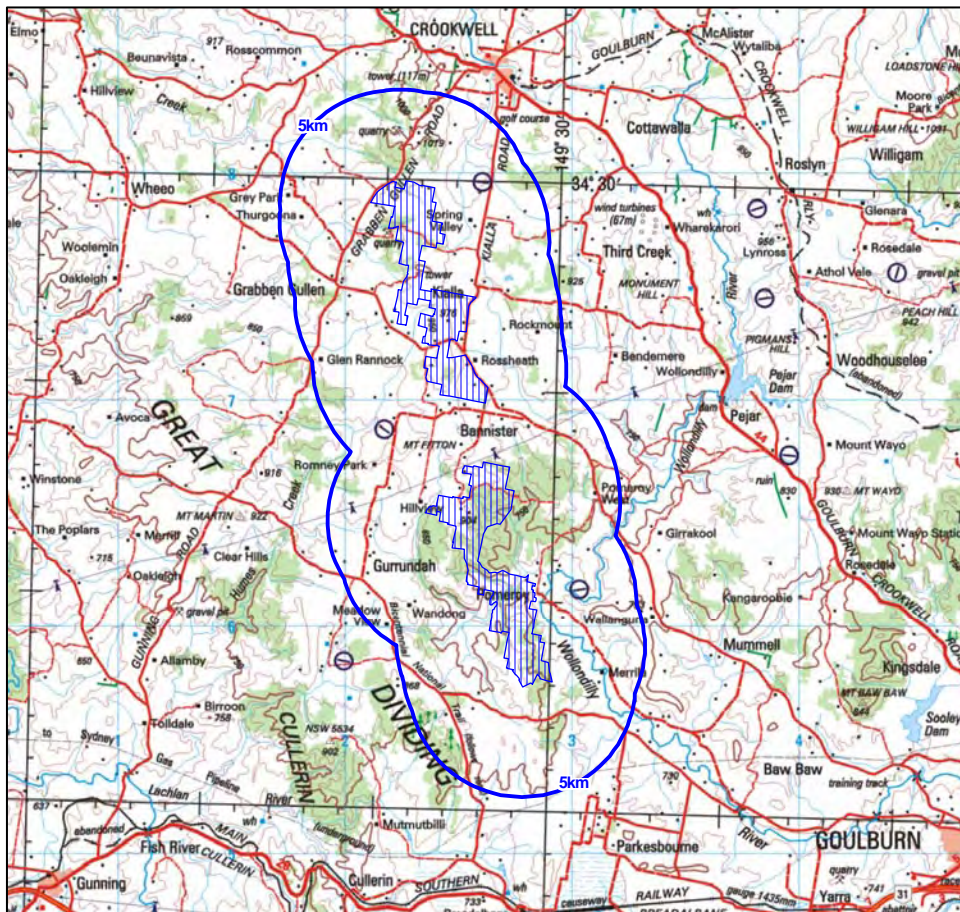


Figure 1 – Site boundary of the proposed project with a 5km outline from proposed turbines

DETAILED PROJECT INFORMATION

Following environmental studies, it is proposed that the Gullen Range wind farm will comprise:

- Between 70 and 80 turbines located on towers up to 85m high and with blades of up to 46.5m in length.
- Internal access tracks and underground electrical cabling. Overhead cabling may be required in certain places.
- A substation to connect the project to the transmission network with an on-site control and maintenance building.



PROJECT LOCATION

The Gullen Range wind farm is proposed on 14 properties along the ridgeline at Kialla, Bannister, Pomeroy and Gurrundah. A number of additional properties have been included in the proposal since the first newsletter was distributed.

It will provide electricity into the NSW grid via the existing 330kV powerlines to the south of Bannister. A new substation is proposed in this location on land secured by EPURON.

BENEFITS

Generation of new, clean, renewable power is required to meet increased customer demand and to reduce greenhouse gas emissions from carbon based fuels. The Goulburn – Crookwell – Yass area has excellent wind speeds and is well positioned to benefit from wind energy production.

The project will have a number of benefits:

- Clean, renewable energy, with no water used in generation. The project will provide enough renewable electricity for the average consumption of 55,000 homes over a typical year
- Reduced pollution and greenhouse gas emissions, leading to a better environment for future generations. The project will reduce greenhouse gas emissions by 450,000 tonnes of CO₂ (equiv) over a typical year.
- Income, employment and investment opportunities for the Goulburn – Crookwell – Yass region

In addition, EPURON will establish a community fund to broaden the benefits of the wind farm across the wider community.

RECENT ACTIVITY

What Have We Been Doing?

Following the first newsletter informing the community of the proposal, we have been undertaking various environmental studies:

- background noise measurements;
- visual impact assessments;
- flora and fauna assessments including bird and bat studies;
- television and radio interference assessments;
- Aboriginal and other historic heritage assessment; and
- traffic and transport impact assessments.

These environmental assessments will feed into the design process to ensure impacts are considered and the project modified accordingly. These studies are

being carried out by independent contractors with input sought from the community.

The Environmental Assessment report will summarise the findings of these assessments and form part of the development approval submission to the Department of Planning (Consent Authority) to be considered under Part 3A (Major Projects) of the Environmental Planning and Assessment (EP&A) Act.

HAVING YOUR SAY

Input from the Community

Our aim is to ensure that we identify and, where possible, mitigate the potential impacts of the wind farm. Before finalising the proposal for submission to the Department of Planning, EPURON wishes to ensure that:

- all relevant issues are considered by EPURON in the assessment of the project; and,
- the community is fully informed and your feedback and concerns are considered in the proposal.

While an independent phone survey has confirmed strong community support for wind farms in the local area, we recognize that opinions in relation to wind farms vary between individuals. The objective of consultation is to determine how to develop the best wind farm possible on this site.

Community Information “Open House”

EPURON is holding an Open House to present the proposal, answer any questions and record community feedback. We will have our consultants available to discuss aspects of the project and will have photo montages to show what the project is likely to look like.

Date: Wednesday 21 November 2007
When: 2pm – 7pm, drop in any time
Where: Grabben Gullen Public Hall
Camp St, Grabben Gullen

CONTACT US

Write to us: Gullen Range Wind Farm
EPURON Pty Ltd
Level 11, 75 Miller St
NORTH SYDNEY NSW 2060

Contact: Simon Davey
Project Manager
Phone: 02 9922 7771
Fax: 02 9922 6645
Email: GullenRange@epuron.com.au