



GULLEN RANGE WIND FARM

Community Update No. 2 – November 2007

INTRODUCTION

Since the last newsletter was distributed in July, EPURON has undertaken environmental and engineering investigations into the proposed Gullen Range wind farm project. These studies have included ecology, archaeology, visual, traffic and transport, background noise assessment and communications studies.

This newsletter outlines the details of the proposal and invites the community to an Open House / Information Day. This is an opportunity to discuss the project in more detail and for the community to provide feedback.

GULLEN RANGE WIND FARM PROPOSAL

The study area is a long elevated ridgeline system running approximately 22 kilometres north-south. Wind monitoring has proven this ridge to have some of the highest wind speeds in NSW. The boundary of the proposal is presented below and the blue line represents a distance of 5km from the proposed turbine locations.

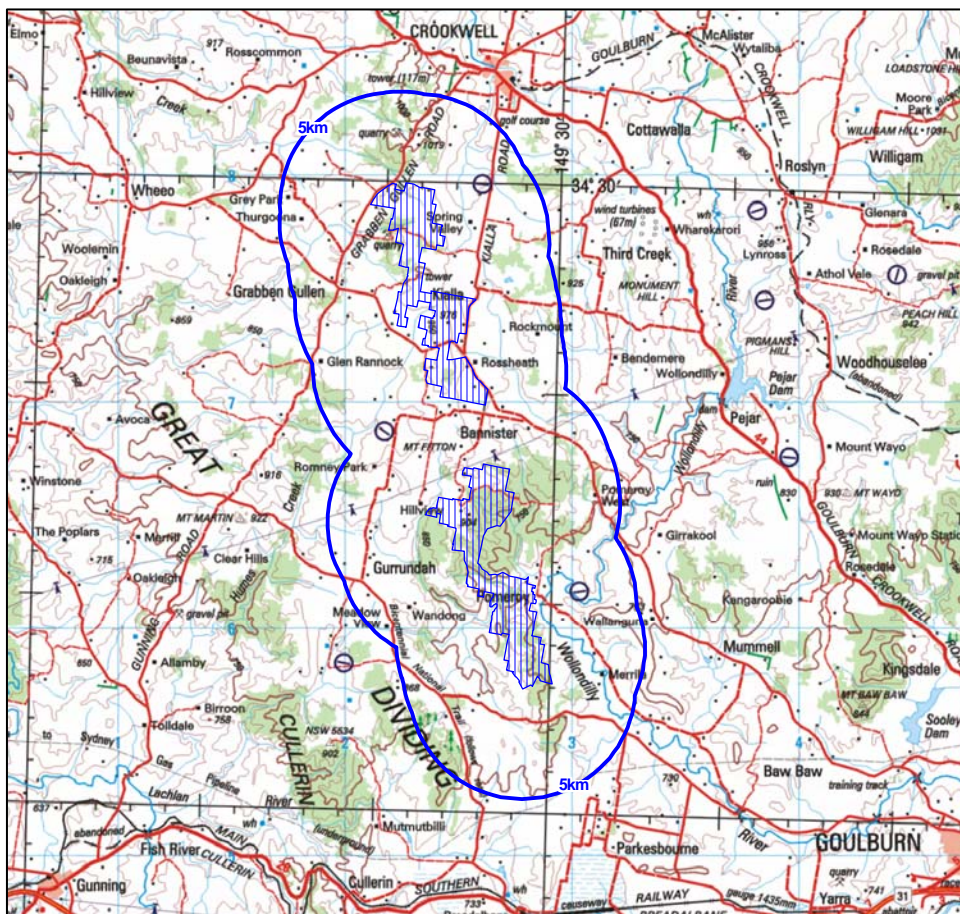


Figure 1 – Site boundary of the proposed project with a 5km outline from proposed turbines

DETAILED PROJECT INFORMATION

Following environmental studies, it is proposed that the Gullen Range wind farm will comprise:

- Between 70 and 80 turbines located on towers up to 85m high and with blades of up to 46.5m in length.
- Internal access tracks and underground electrical cabling. Overhead cabling may be required in certain places.
- A substation to connect the project to the transmission network with an on-site control and maintenance building.



PROJECT LOCATION

The Gullen Range wind farm is proposed on 14 properties along the ridgeline at Kialla, Bannister, Pomeroy and Gurrundah. A number of additional properties have been included in the proposal since the first newsletter was distributed.

It will provide electricity into the NSW grid via the existing 330kV powerlines to the south of Bannister. A new substation is proposed in this location on land secured by EPURON.

BENEFITS

Generation of new, clean, renewable power is required to meet increased customer demand and to reduce greenhouse gas emissions from carbon based fuels. The Goulburn – Crookwell – Yass area has excellent wind speeds and is well positioned to benefit from wind energy production.

The project will have a number of benefits:

- Clean, renewable energy, with no water used in generation. The project will provide enough renewable electricity for the average consumption of 55,000 homes over a typical year
- Reduced pollution and greenhouse gas emissions, leading to a better environment for future generations. The project will reduce greenhouse gas emissions by 450,000 tonnes of CO₂ (equiv) over a typical year.
- Income, employment and investment opportunities for the Goulburn – Crookwell – Yass region

In addition, EPURON will establish a community fund to broaden the benefits of the wind farm across the wider community.

RECENT ACTIVITY

What Have We Been Doing?

Following the first newsletter informing the community of the proposal, we have been undertaking various environmental studies:

- background noise measurements;
- visual impact assessments;
- flora and fauna assessments including bird and bat studies;
- television and radio interference assessments;
- Aboriginal and other historic heritage assessment; and
- traffic and transport impact assessments.

These environmental assessments will feed into the design process to ensure impacts are considered and the project modified accordingly. These studies are

being carried out by independent contractors with input sought from the community.

The Environmental Assessment report will summarise the findings of these assessments and form part of the development approval submission to the Department of Planning (Consent Authority) to be considered under Part 3A (Major Projects) of the Environmental Planning and Assessment (EP&A) Act.

HAVING YOUR SAY

Input from the Community

Our aim is to ensure that we identify and, where possible, mitigate the potential impacts of the wind farm. Before finalising the proposal for submission to the Department of Planning, EPURON wishes to ensure that:

- all relevant issues are considered by EPURON in the assessment of the project; and,
- the community is fully informed and your feedback and concerns are considered in the proposal.

While an independent phone survey has confirmed strong community support for wind farms in the local area, we recognize that opinions in relation to wind farms vary between individuals. The objective of consultation is to determine how to develop the best wind farm possible on this site.

Community Information “Open House”

EPURON is holding an Open House to present the proposal, answer any questions and record community feedback. We will have our consultants available to discuss aspects of the project and will have photo montages to show what the project is likely to look like.

Date: Wednesday 21 November 2007
When: 2pm – 7pm, drop in any time
Where: Grabben Gullen Public Hall
Camp St, Grabben Gullen

CONTACT US

Write to us: Gullen Range Wind Farm
EPURON Pty Ltd
Level 11, 75 Miller St
NORTH SYDNEY NSW 2060

Contact: Simon Davey
Project Manager
Phone: 02 9922 7771
Fax: 02 9922 6645
Email: GullenRange@epuron.com.au