

358500

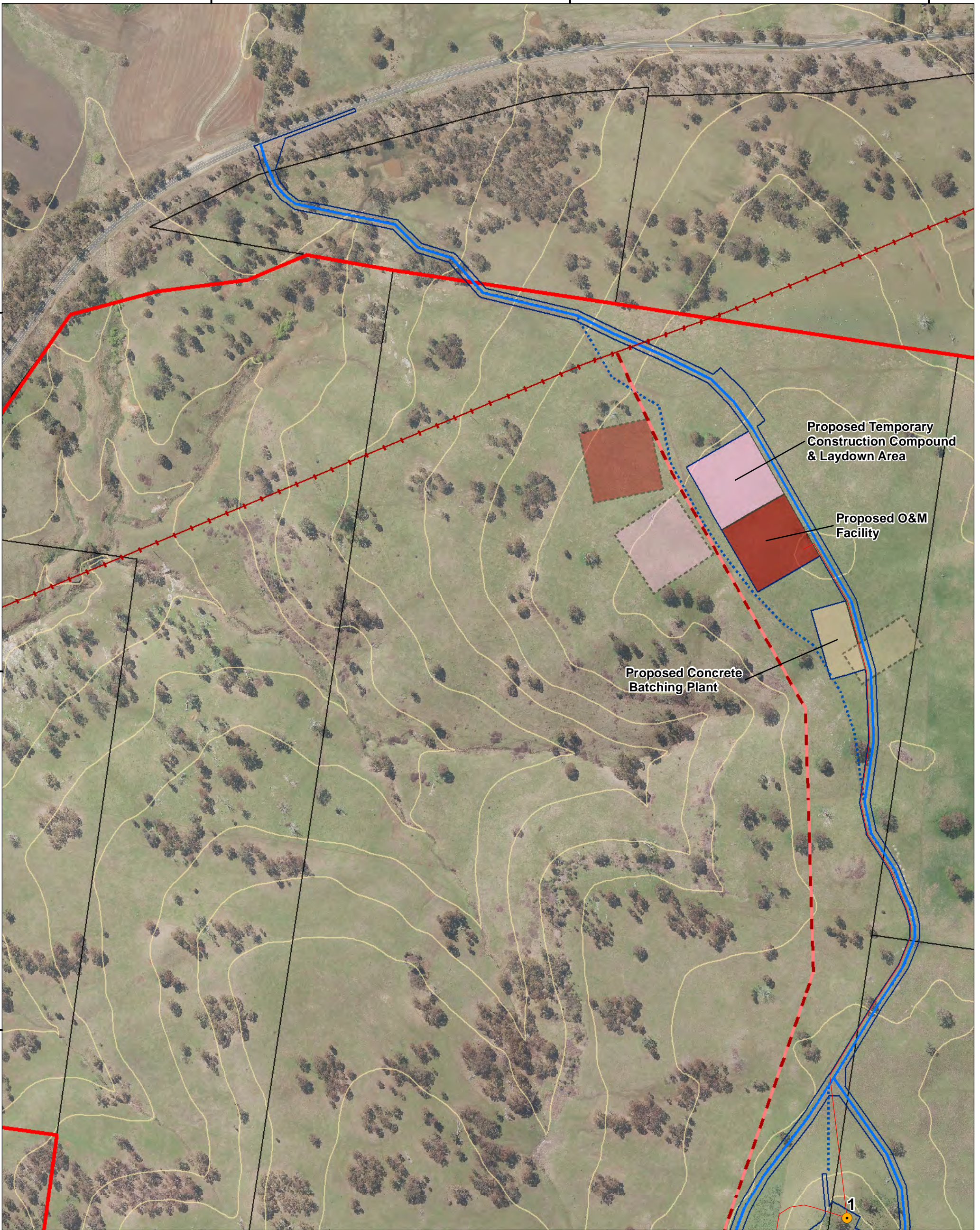
359000

359500

6707000

6706500

6706000



Proposed Temporary Construction Compound & Laydown Area

Proposed O&M Facility

Proposed Concrete Batching Plant

1

**GOLDWIND**

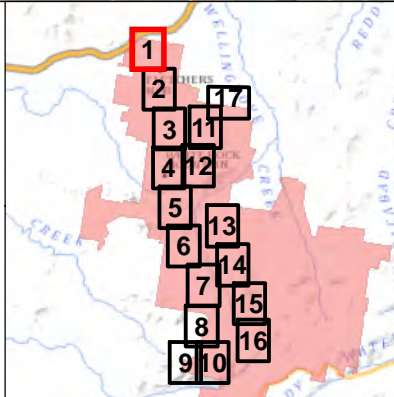


Disclaimer:  
This plan was prepared for the purpose and exclusive use of Goldwind Australia. Goldwind Australia gives no warranty in relation to the data (including accuracy, reliability, completeness or suitability) and accepts no liability for any loss, damage or costs (including consequential damage) relating to any use of the data in this map.

Projection: GDA94 MGA56

• LEGEND

- Site Perimeter
- Cadastral Boundary
- 10m Contour
- Existing 132kV Transmission Line
- Turbine Layout 66
- Project Footprint (Modified Layout)
- Electrical Reticulation (Modified Layout)
- 132kV Overhead Line (PA Approved)
- 132kV Overhead Line (Modified Layout)
- Access Tracks (Modified Layout)
- Access Tracks (PA Approved)
- Facilities (Modified Layout)**
- Operation & Maintenance Facility
- Temporary Construction Compound
- Concrete Batching Plant
- Facilities (PA Compliant)**
- Operation & Maintenance Facility
- Concrete Batching Plant



<b>White Rock Wind Farm</b>	
• TITLE <b>Modification Application: Mapsheet 1 of 18</b>	
• DATE 4/12/2015	• PRODUCED I.Mackey
• SCALE 1:5,000 @ A3	• CHECKED A.Maddocks
• STATUS Approved	• APPROVED J.Bembrick
0 50 100 200 Metres	
• DRAWING No. WRWF_MOD3_010_1G	• REV 1F



359000

359500

360000

6705500

6705000

6704500



PA Compliant 132kV Overhead Line

Modified 132kV Overhead Line

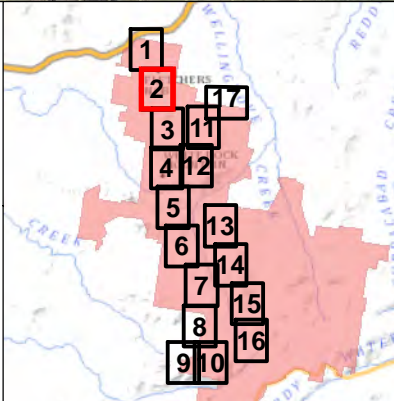


Disclaimer:  
This plan was prepared for the purpose and exclusive use of Goldwind Australia. Goldwind Australia gives no warranty in relation to the data (including accuracy, reliability, completeness or suitability) and accepts no liability for any loss, damage or costs (including consequential damage) relating to any use of the data in this map.

Projection: GDA94 MGA56

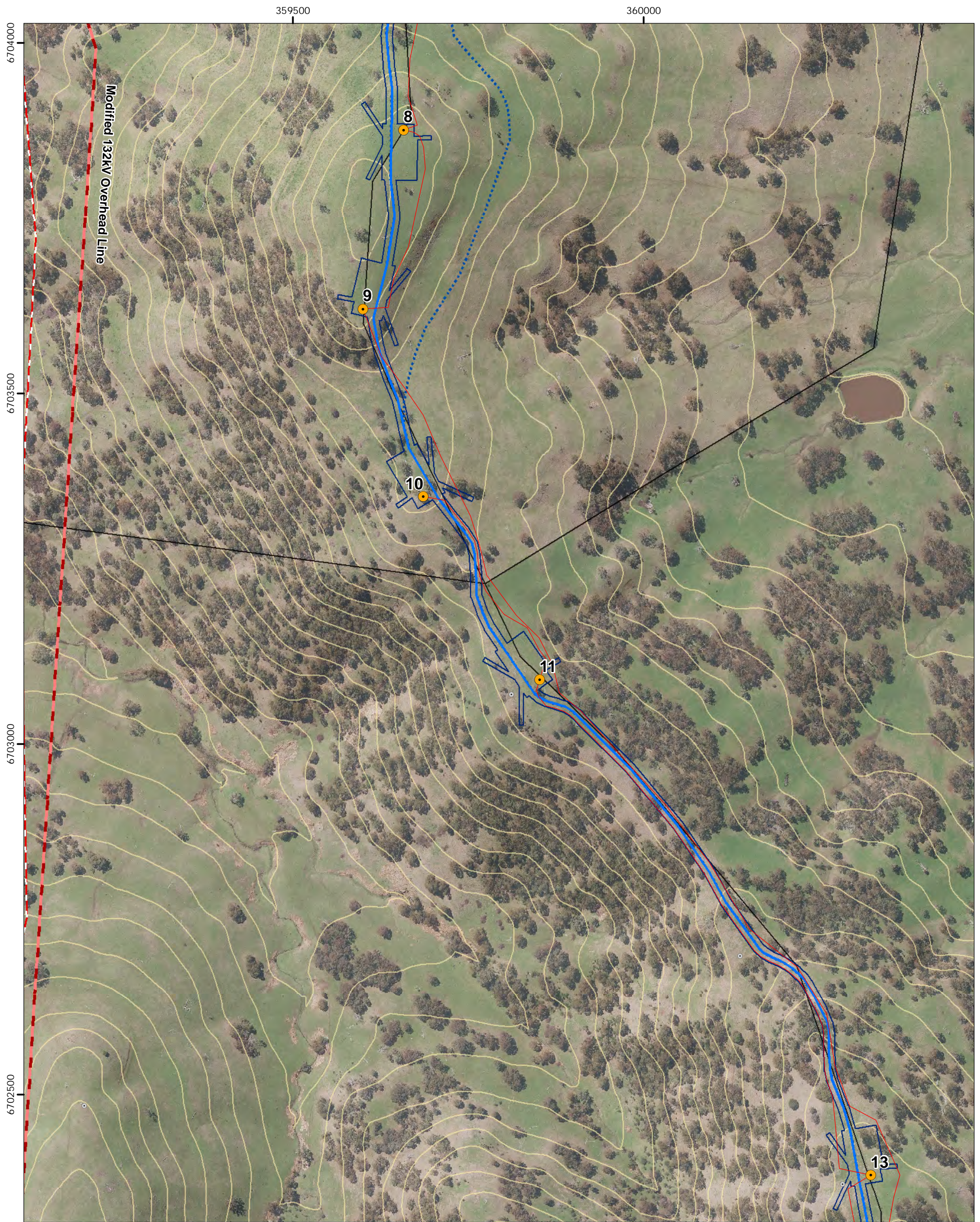
LEGEND

- Site Perimeter
- Cadastral Boundary
- 10m Contour
- Turbine Layout 66
- Approved Turbine Locations
- Project Footprint (Modified Layout)
- Electrical Reticulation (Modified Layout)
- 132kV Overhead Line (PA Approved)
- 132kV Overhead Line (Modified Layout)
- Access Tracks (Modified Layout)
- Access Tracks (PA Approved)



<p><b>White Rock Wind Farm</b></p>	
<p><b>Modification Application: Mapsheet 2 of 18</b></p>	
<p>DATE: 4/12/2015</p> <p>SCALE: 1:5,000 @ A3</p> <p>STATUS: Approved</p>	<p>PRODUCED: I.Mackey</p> <p>CHECKED: A.Maddocks</p> <p>APPROVED: J.Bembrick</p>
<p>0 50 100 200 Metres</p>	
<p>DRAWING No: WRWF_MOD3_010_1G</p>	<p>REV 1F</p>

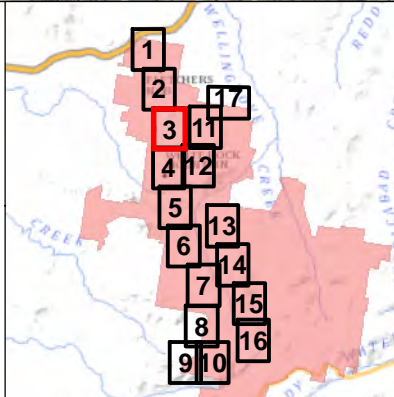




Disclaimer:  
This plan was prepared for the purpose and exclusive use of Goldwind Australia. Goldwind Australia gives no warranty in relation to the data (including accuracy, reliability, completeness or suitability) and accepts no liability for any loss, damage or costs (including consequential damage) relating to any use of the data in this map.

Projection: GDA94 MGA56

- LEGEND**
- Site Perimeter
  - Cadastral Boundary
  - 10m Contour
  - Turbine Layout 66
  - Approved Turbine Locations
  - Project Footprint (Modified Layout)
  - Electrical Reticulation (Modified Layout)
  - 132kV Overhead Line (PA Approved)
  - 132kV Overhead Line (Modified Layout)
  - Access Tracks (Modified Layout)
  - Access Tracks (PA Approved)



<b>White Rock Wind Farm</b>	
<b>Modification Application: Mapsheet 3 of 18</b>	
• DATE: 4/12/2015 • SCALE: 1:5,000 @ A3 • STATUS: Approved	• PRODUCED: I.Mackey • CHECKED: A.Maddocks • APPROVED: J.Bembrick
0    50    100    200 Metres	
• DRAWING No: WRWF_MOD3_010_1G	• REV 1F





Modified 132kV Overhead Line

6701500

6701000

Proposed Concrete Batching Plant

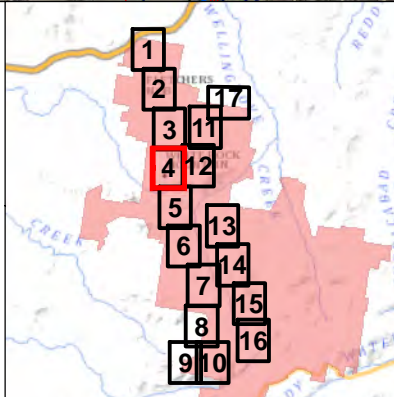


Disclaimer:  
This plan was prepared for the purpose and exclusive use of Goldwind Australia. Goldwind Australia gives no warranty in relation to the data (including accuracy, reliability, completeness or suitability) and accepts no liability for any loss, damage or costs (including consequential damage) relating to any use of the data in this map.

Projection: GDA94 MGA56

LEGEND

- Site Perimeter
  - Cadastral Boundary
  - 10m Contour
  - Turbine Layout 66
  - Approved Turbine Locations
  - Project Footprint (Modified Layout)
  - Permanent Met Mast
  - Electrical Reticulation (Modified Layout)
  - 132kV Overhead Line (PA Approved)
  - 132kV Overhead Line (Modified Layout)
  - Access Tracks (Modified Layout)
  - Access Tracks (PA Approved)
- Facilities (Modified Layout)**
- Concrete Batching Plant



<b>PROJECT</b>		<b>White Rock Wind Farm</b>	
<b>TITLE</b>		<b>Modification Application: Mapsheet 4 of 18</b>	
<b>DATE</b> 4/12/2015	<b>PRODUCED</b> I.Mackey	<b>CHECKED</b> A.Maddocks	<b>APPROVED</b> J.Bembrick
<b>SCALE</b> 1:5,000 @ A3	<b>STATUS</b> Approved		
0 50 100 200 Metres		N	
<b>DRAWING No.</b> WRWF_MOD3_010_1G	<b>REV</b> 1F		



359500

360000

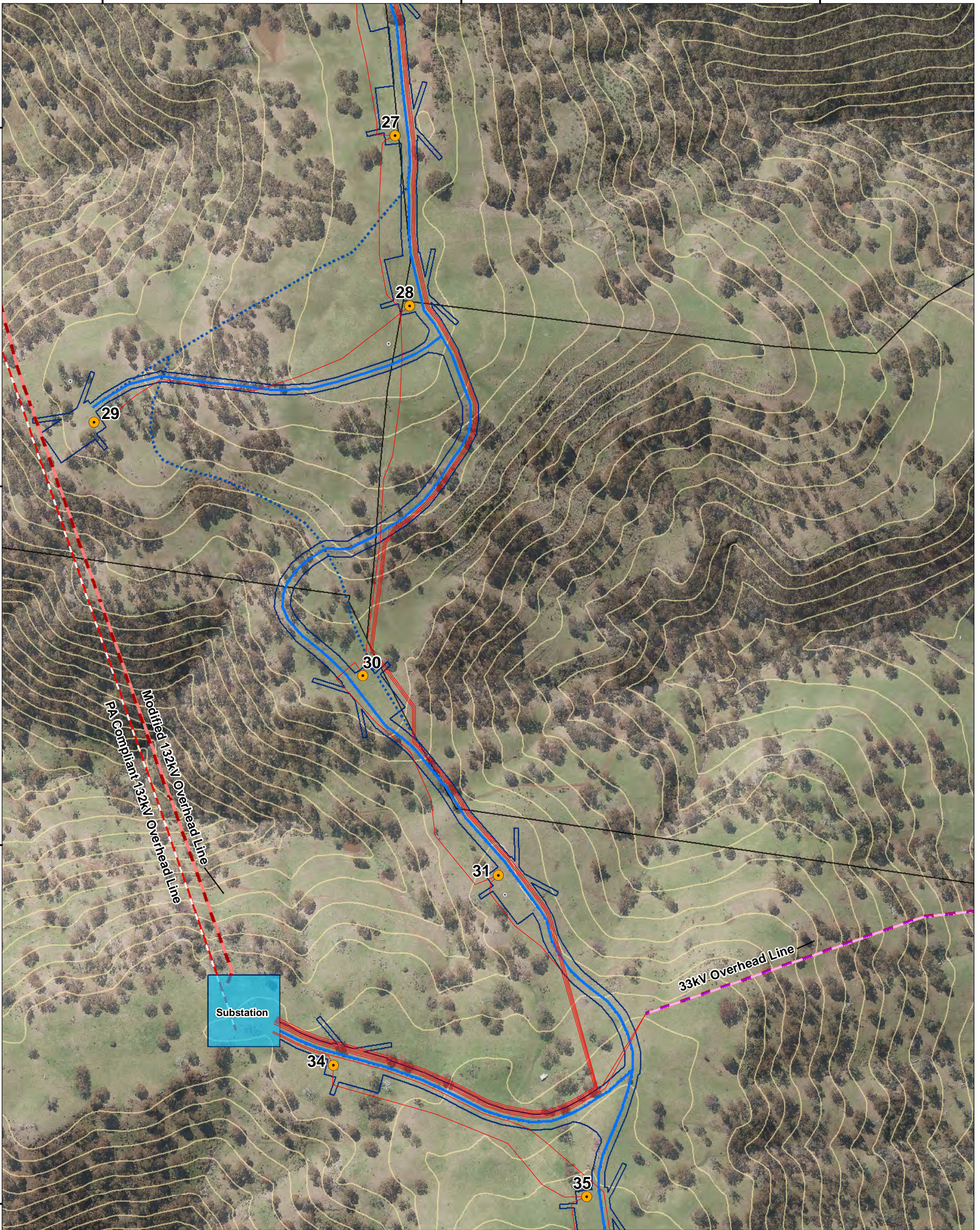
360500

6700500

6700000

6699500

6699000



PA Compliant 132kV Overhead Line  
 Modified 132kV Overhead Line

Substation

33kV Overhead Line

34

31

30

28

27

35

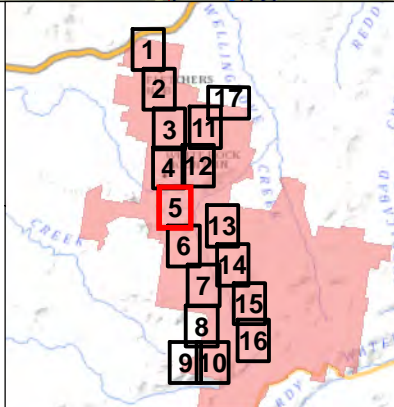


Disclaimer:  
 This plan was prepared for the purpose and exclusive use of Goldwind Australia. Goldwind Australia gives no warranty in relation to the data (including accuracy, reliability, completeness or suitability) and accepts no liability for any loss, damage or costs (including consequential damage) relating to any use of the data in this map.

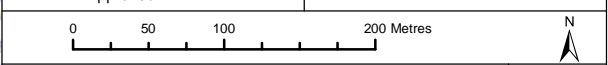
Projection: GDA94 MGA56

LEGEND

- Site Perimeter
- Cadastral Boundary
- 10m Contour
- Turbine Layout 66
- Approved Turbine Locations
- Project Footprint (Modified Layout)
- Electrical Reticulation (Modified Layout)
- 132kV Overhead Line (PA Approved)
- 132kV Overhead Line (Modified Layout)
- Substation / Switchyard
- 33kV Overhead Line
- Access Tracks (Modified Layout)
- Access Tracks (PA Approved)



<p><b>White Rock Wind Farm</b></p>	
<p><b>Modification Application:          Mapsheet 5 of 18</b></p>	
<p>DATE: 4/12/2015</p> <p>SCALE: 1:5,000 @ A3</p> <p>STATUS: Approved</p>	<p>PRODUCED: I.Mackey</p> <p>CHECKED: A.Maddocks</p> <p>APPROVED: J.Bembrick</p>
<p>DRAWING No: WRWF_MOD3_010_1G</p>	<p>REV: 1F</p>





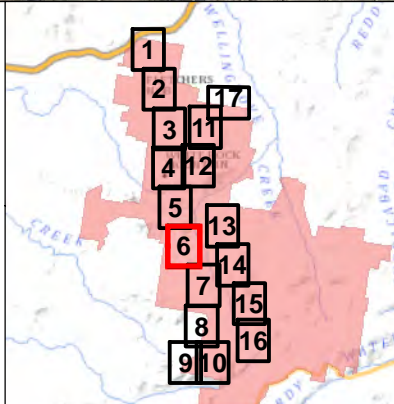


Disclaimer:  
This plan was prepared for the purpose and exclusive use of Goldwind Australia. Goldwind Australia gives no warranty in relation to the data (including accuracy, reliability, completeness or suitability) and accepts no liability for any loss, damage or costs (including consequential damage) relating to any use of the data in this map.

Projection: GDA94 MGA56

• LEGEND

- Site Perimeter
- Cadastral Boundary
- 10m Contour
- Turbine Layout 66
- ⊙ Approved Turbine Locations
- Project Footprint (Modified Layout)
- Electrical Reticulation (Modified Layout)
- Access Tracks (Modified Layout)
- Access Tracks (PA Approved)



<b>White Rock Wind Farm</b>	
<b>Modification Application: Mapsheet 6 of 18</b>	
<p>• DATE 4/12/2015</p> <p>• SCALE 1:5,000 @ A3</p> <p>• STATUS Approved</p>	<p>• PRODUCED I.Mackey</p> <p>• CHECKED A.Maddocks</p> <p>• APPROVED J.Bembrick</p>
<p>0 50 100 200 Metres</p>	
<p>• DRAWING No. WRWF_MOD3_010_1G</p>	<p>• REV 1F</p>



361000

361500

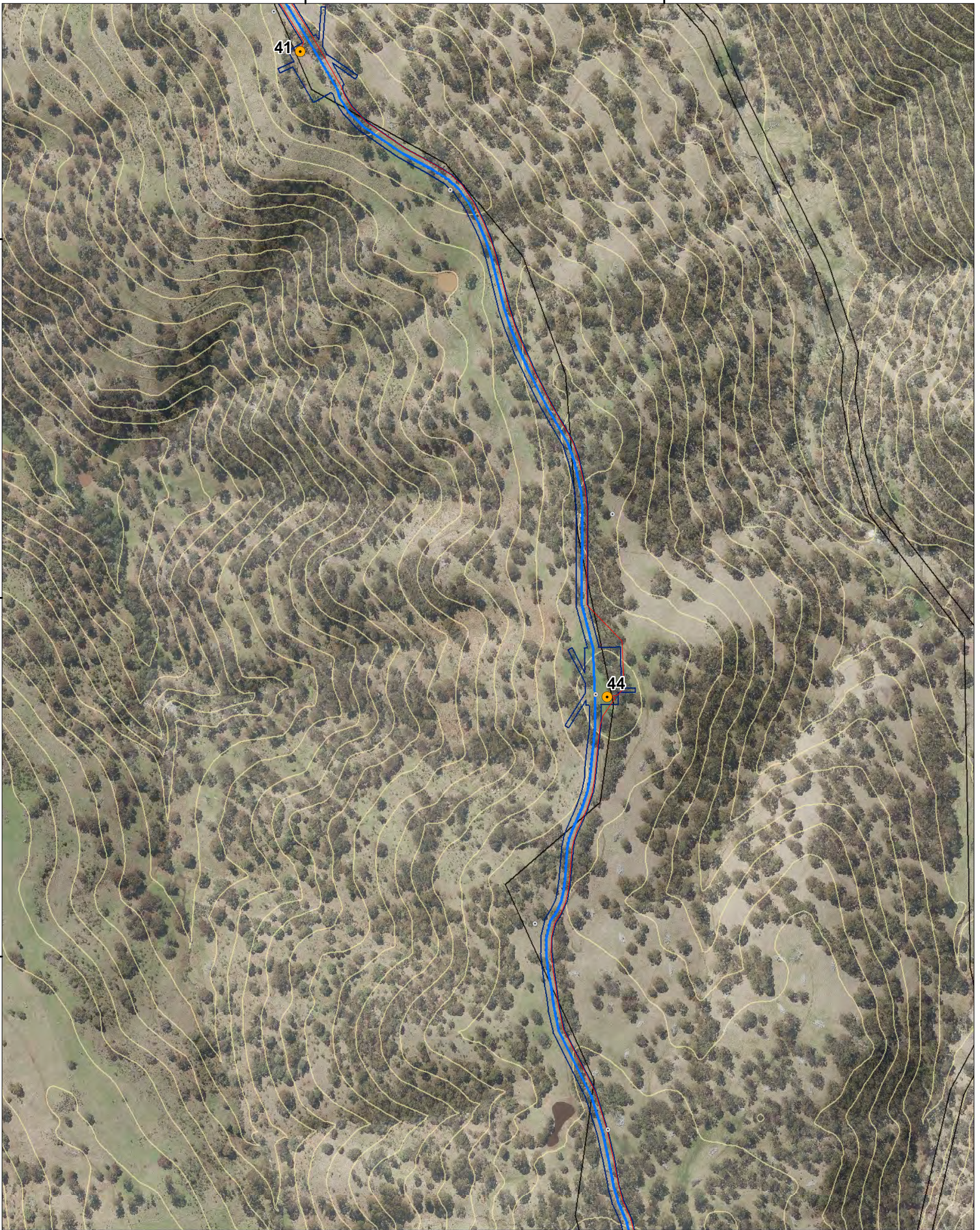
41

44

6697000

6696500

6696000

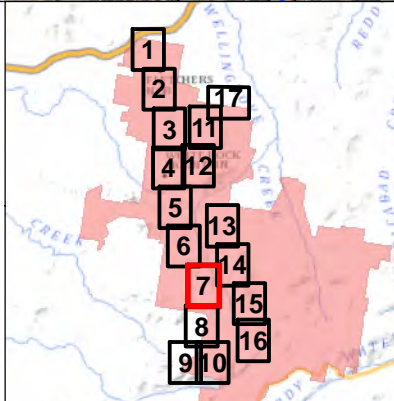


Disclaimer:  
This plan was prepared for the purpose and exclusive use of Goldwind Australia. Goldwind Australia gives no warranty in relation to the data (including accuracy, reliability, completeness or suitability) and accepts no liability for any loss, damage or costs (including consequential damage) relating to any use of the data in this map.

Projection: GDA94 MGA56

• LEGEND

- Site Perimeter
- Cadastral Boundary
- 10m Contour
- Turbine Layout 66
- ⊙ Approved Turbine Locations
- Project Footprint (Modified Layout)
- Electrical Reticulation (Modified Layout)
- Access Tracks (Modified Layout)
- Access Tracks (PA Approved)



<b>White Rock Wind Farm</b>	
<b>Modification Application: Mapsheet 7 of 18</b>	
• DATE 4/12/2015 • SCALE 1:5,000 @ A3 • STATUS Approved	• PRODUCED I.Mackey • CHECKED A.Maddocks • APPROVED J.Bembrick
0 50 100 200 Metres	
• DRAWING No. WRWF_MOD3_010_1G	• REV 1F



361000

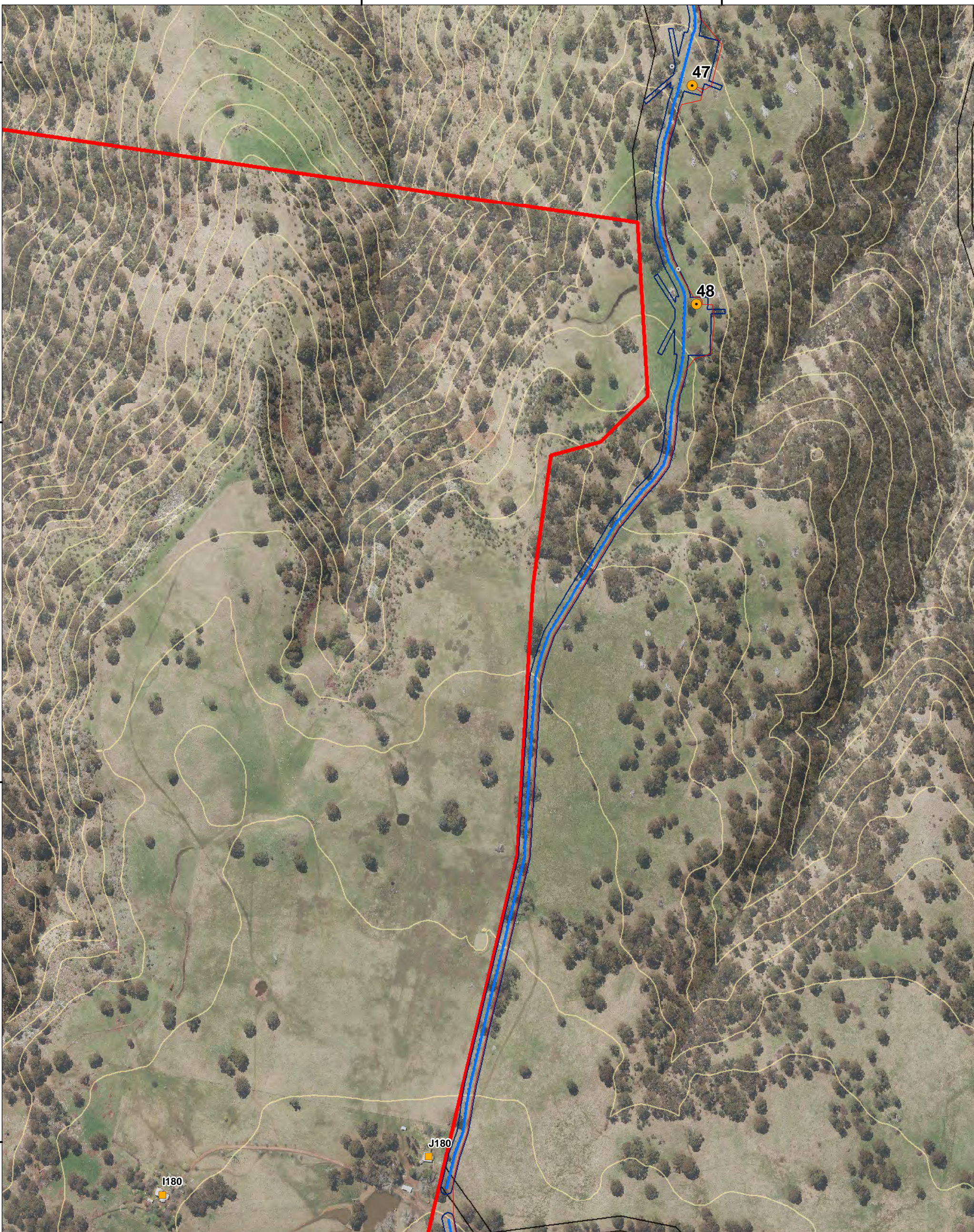
361500

6695500

6695000

6694500

6694000



47

48

J180

I180

**GOLDWIND**

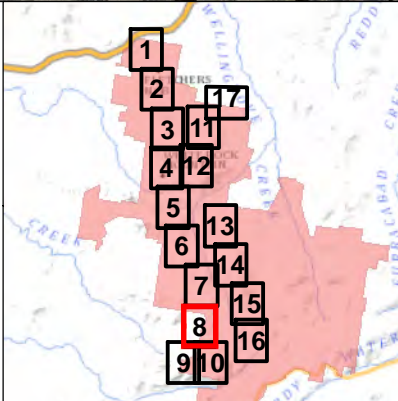


Disclaimer:  
This plan was prepared for the purpose and exclusive use of Goldwind Australia. Goldwind Australia gives no warranty in relation to the data (including accuracy, reliability, completeness or suitability) and accepts no liability for any loss, damage or costs (including consequential damage) relating to any use of the data in this map.

Projection: GDA94 MGA56

• LEGEND

- Site Perimeter
- Cadastral Boundary
- 10m Contour
- Turbine Layout 66
- Approved Turbine Locations
- Neighbour Agreement
- Project Footprint (Modified Layout)
- Electrical Reticulation (Modified Layout)
- Access Tracks (Modified Layout)
- Access Tracks (PA Approved)



• PROJECT

**White Rock Wind Farm**

• TITLE

**Modification Application:  
Mapsheet 8 of 18**

• DATE 4/12/2015

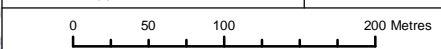
• PRODUCED I.Mackey

• SCALE 1:5,000 @ A3

• CHECKED A.Maddocks

• STATUS Approved

• APPROVED J.Bembrick



• DRAWING No. WRWF\_MOD3\_010\_1G

• REV 1F



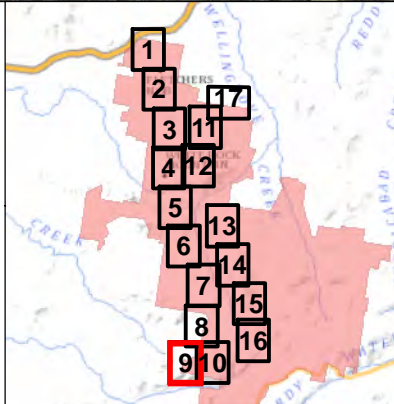


Disclaimer:  
This plan was prepared for the purpose and exclusive use of Goldwind Australia. Goldwind Australia gives no warranty in relation to the data (including accuracy, reliability, completeness or suitability) and accepts no liability for any loss, damage or costs (including consequential damage) relating to any use of the data in this map.

Projection: GDA94 MGA56

• LEGEND

- Site Perimeter
- Cadastral Boundary
- 10m Contour
- Turbine Layout 66
- Approved Turbine Locations
- Neighbour Agreement
- Project Footprint (Modified Layout)
- Electrical Reticulation (Modified Layout)
- Access Tracks (Modified Layout)
- Access Tracks (PAApproved)



<b>White Rock Wind Farm</b>	
<b>Modification Application: Mapsheet 9 of 18</b>	
<ul style="list-style-type: none"> <li>• DATE 4/12/2015</li> <li>• SCALE 1:5,000 @ A3</li> <li>• STATUS Approved</li> </ul>	<ul style="list-style-type: none"> <li>• PRODUCED I.Mackey</li> <li>• CHECKED A.Maddocks</li> <li>• APPROVED J.Bembrick</li> </ul>
• DRAWING No. WRWF_MOD3_010_1G	• REV 1F