

Appendix D: Photographs of Logger Locations

R1



R21



R27



R35



R44



R56

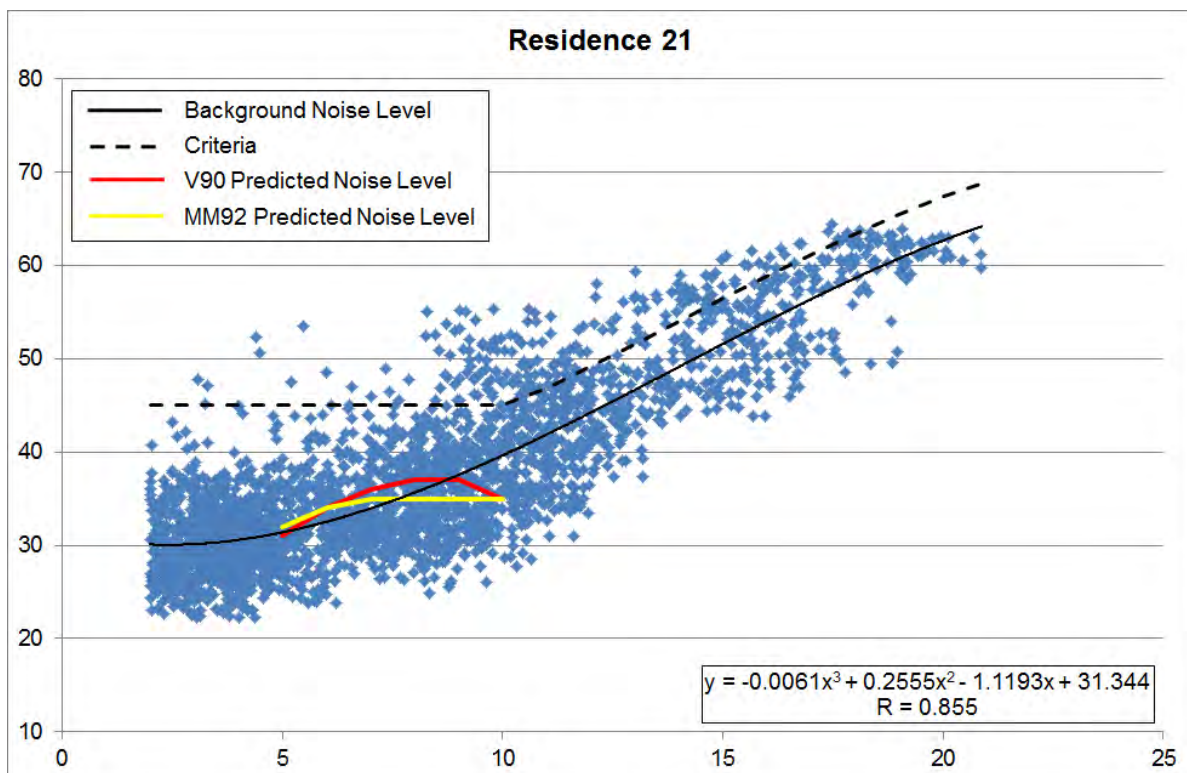
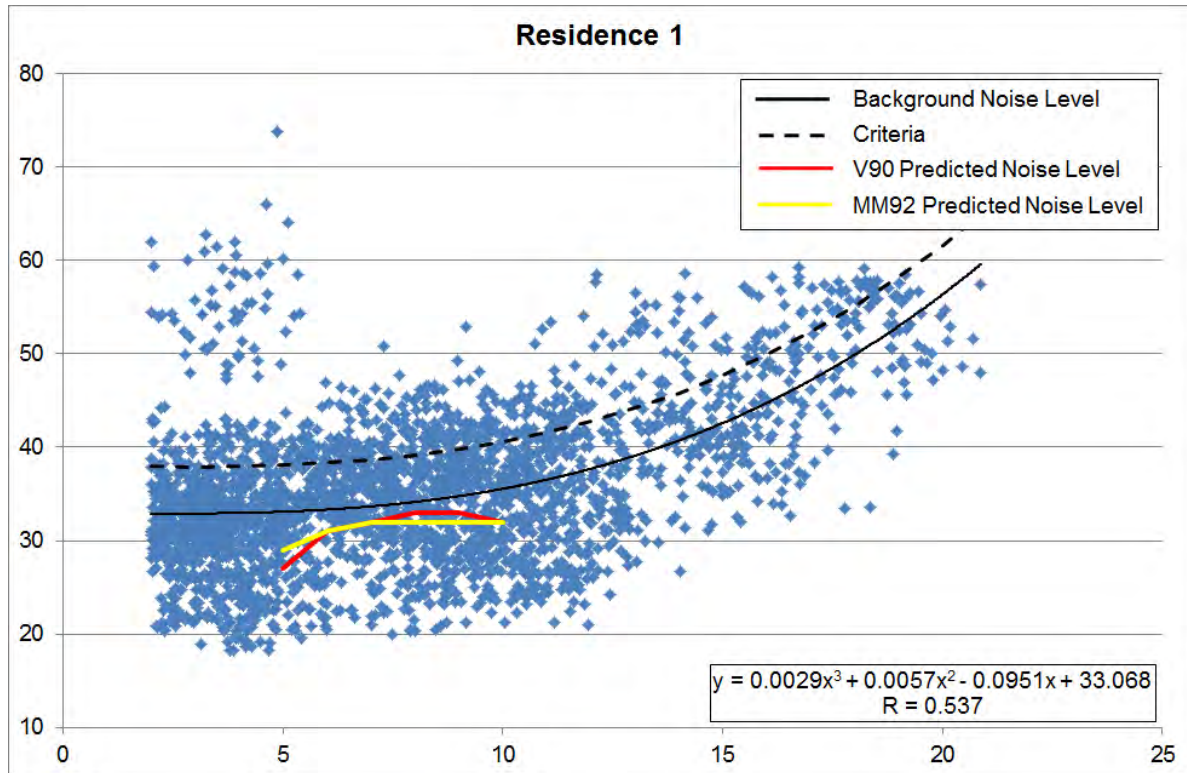


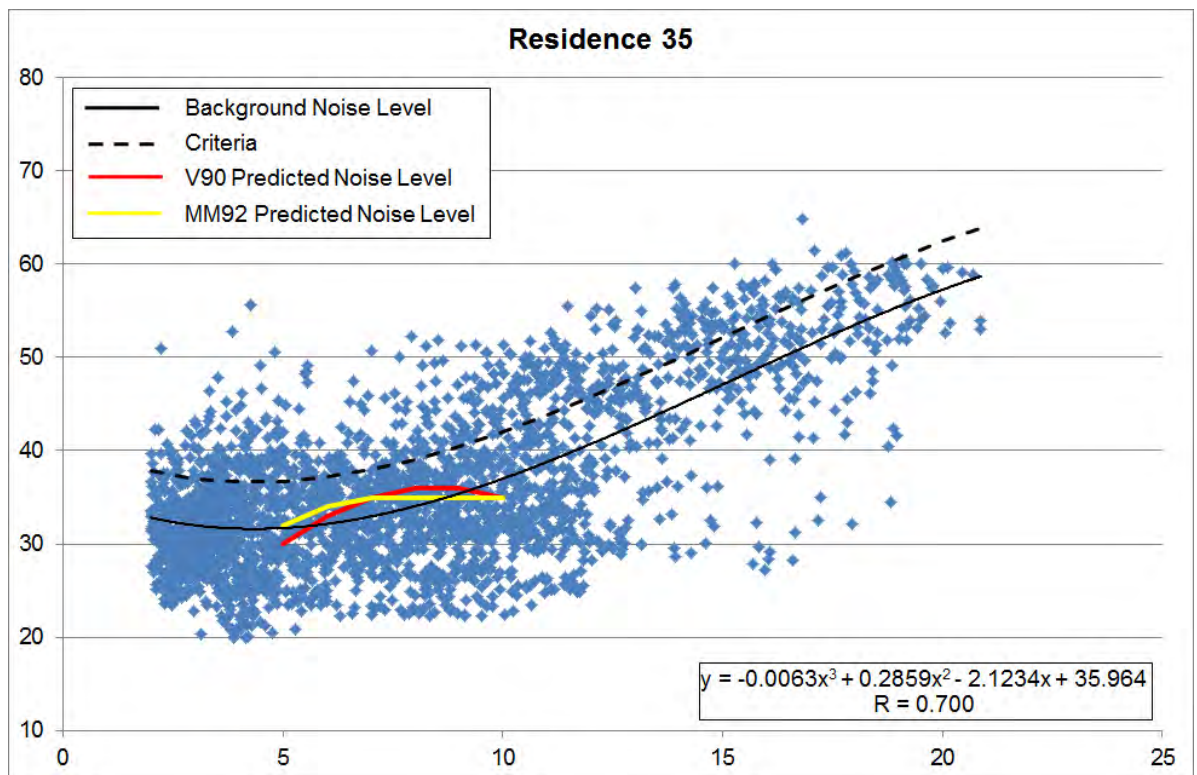
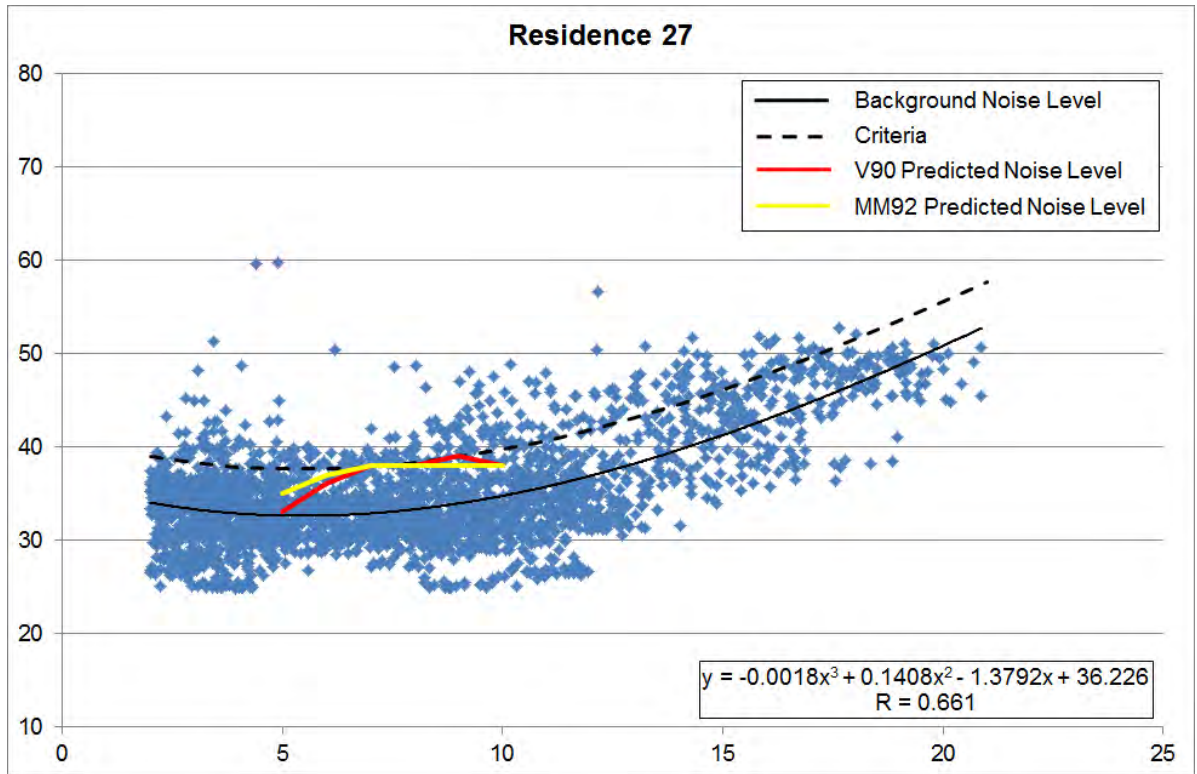
R64

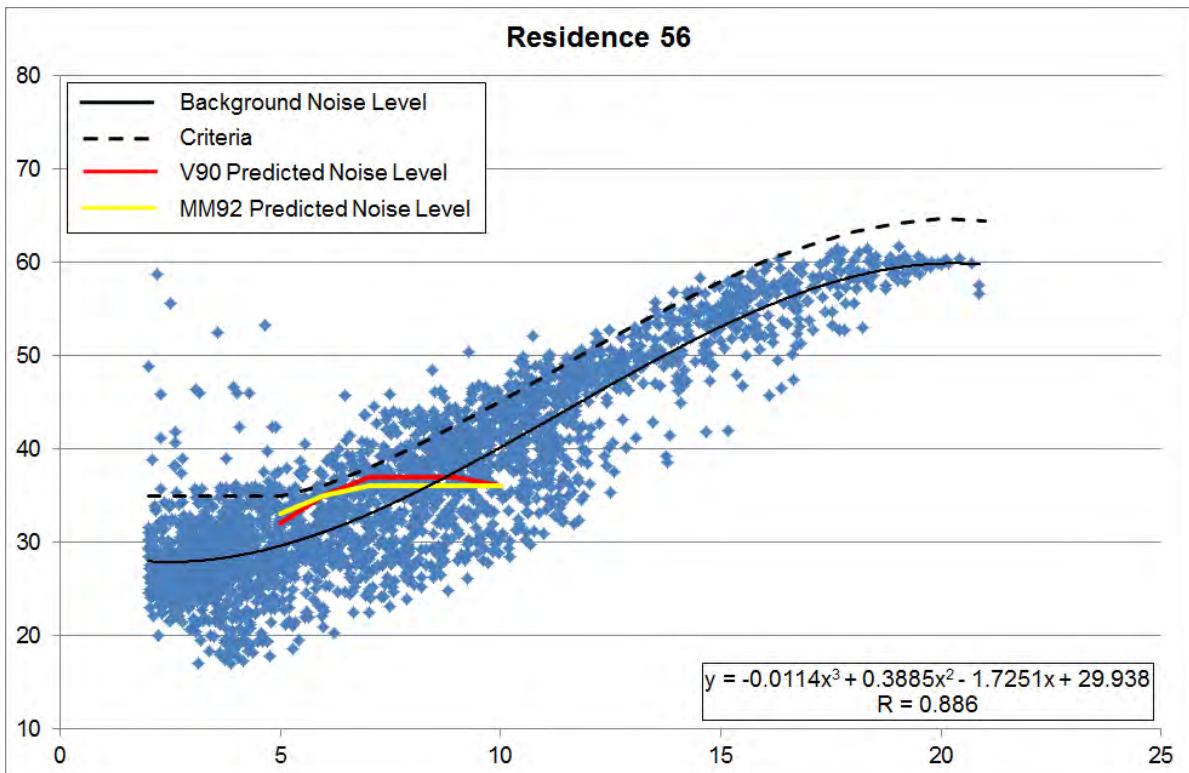
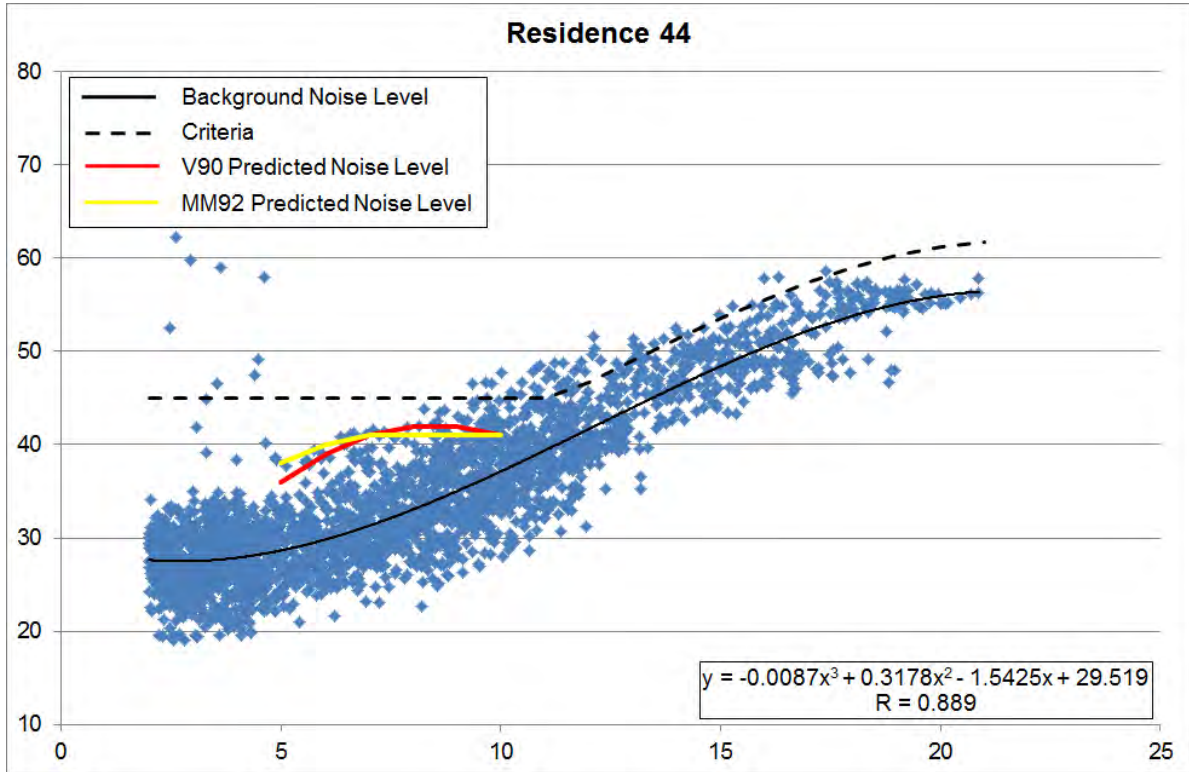


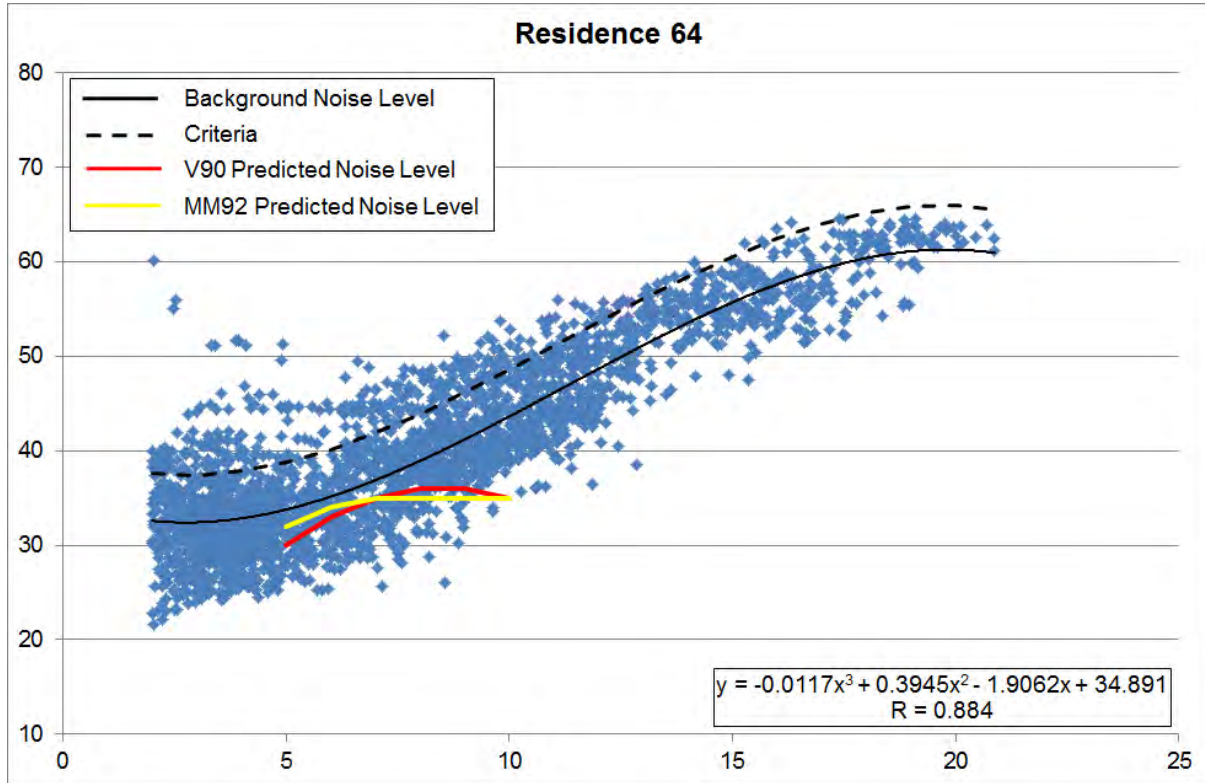


Appendix E: Background and Predicted Noise Levels











Appendix F: Predicted Wind Farm Noise and Relevant Criteria

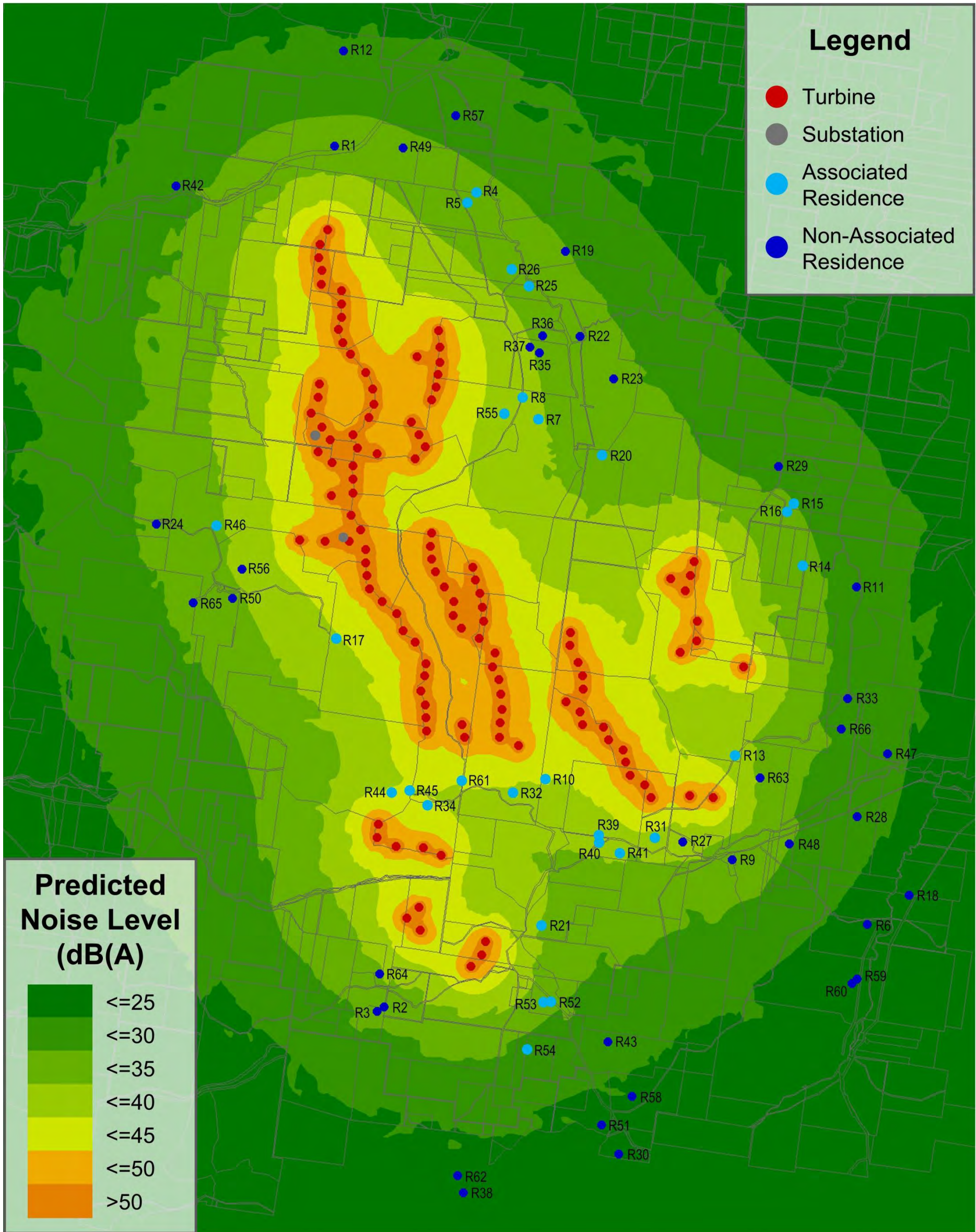
Wind Speed (m/s)	Criteria (dB(A))						Predicted Noise Level V90 (dB(A))						Predicted Noise Level MM92 (dB(A))					
	5	6	7	8	9	10	5	6	7	8	9	10	5	6	7	8	9	10
R1	38	38	39	39	40	41	27	31	32	33	33	32	29	31	32	32	32	32
R2	35	35	36	38	39	40	28	31	33	34	34	33	30	32	33	33	33	33
R3	35	35	36	38	39	40	27	31	33	34	33	32	29	31	32	32	32	32
R4	45	45	45	45	45	45	27	30	32	33	33	32	29	30	31	31	31	31
R5	45	45	45	45	45	45	28	31	33	34	34	32	29	31	32	32	32	32
R6	35	35	36	38	39	40	20	24	25	26	26	25	21	23	23	23	23	23
R7	45	45	45	45	45	45	31	34	36	37	37	35	33	35	35	35	35	35
R8	45	45	45	45	45	45	32	35	37	38	38	36	34	35	36	36	36	36
R9	35	35	36	38	39	40	29	32	34	34	35	34	31	33	33	33	33	33
R10	45	45	45	45	45	45	36	39	41	42	42	41	38	40	41	41	41	41
R11	35	35	36	38	39	40	24	27	29	30	30	28	25	27	28	28	28	28
R12	35	35	36	38	39	40	22	25	27	28	28	27	23	25	26	26	26	26
R13	45	45	45	45	45	45	32	35	37	37	38	37	34	36	37	37	37	37
R14	45	45	45	45	45	45	27	30	32	33	33	31	28	30	31	31	31	31
R15	45	45	45	45	45	45	26	29	31	32	32	31	27	29	30	30	30	30
R16	45	45	45	45	45	45	26	30	32	33	32	31	28	30	31	31	31	31
R17	45	45	45	45	45	45	35	38	40	41	41	40	37	39	40	40	40	40
R18	35	35	36	38	39	40	20	23	25	26	26	24	20	22	23	23	23	23
R19	35	35	36	38	39	40	26	29	31	32	32	31	27	29	30	30	30	30
R20	45	45	45	45	45	45	29	32	34	35	35	34	31	33	34	34	34	34
R21	45	45	45	45	45	45	31	34	36	37	37	35	32	34	35	35	35	35
R22	35	35	36	38	39	40	28	31	33	34	34	32	29	31	32	32	32	32
R23	35	35	36	38	39	40	27	31	32	33	33	32	29	31	31	31	31	31
R24	35	35	36	38	39	40	27	30	32	33	33	32	29	30	31	31	31	31
R25	45	45	45	45	45	45	29	32	34	35	35	33	30	32	33	33	33	33
R26	45	45	45	45	45	45	29	32	34	35	35	34	31	32	33	33	33	33
R27	38	38	38	38	39	40	33	36	38	38	39	38	35	37	38	38	38	38
R28	35	35	36	38	39	40	23	26	28	29	29	28	24	26	27	27	27	27
R29	35	35	36	38	39	40	24	27	29	30	30	29	25	27	28	28	28	28
R30	35	35	36	38	39	40	19	22	24	25	25	24	19	21	22	22	22	22
R31	45	45	45	45	45	45	34	38	39	40	40	39	36	38	39	39	39	39
R32	45	45	45	45	45	45	35	38	40	41	41	40	37	39	40	40	40	40
R33	35	35	36	38	39	40	24	28	29	30	30	29	26	27	28	28	28	28
R34	45	45	45	45	45	45	36	39	41	42	42	41	38	40	41	41	41	41



Wind Speed (m/s)	Criteria (dB(A))						Predicted Noise Level V90 (dB(A))						Predicted Noise Level MM92 (dB(A))					
	5	6	7	8	9	10	5	6	7	8	9	10	5	6	7	8	9	10
R35	37	37	38	39	40	42	30	33	35	36	36	35	32	34	35	35	35	35
R36	35	35	36	38	39	40	30	33	35	36	35	34	31	33	34	34	34	34
R37	35	35	36	38	39	40	31	34	36	37	37	35	32	34	35	35	35	35
R38	35	35	36	38	39	40	19	22	24	25	25	23	19	21	22	22	22	22
R39	45	45	45	45	45	45	33	36	38	39	39	37	35	37	38	38	38	38
R40	45	45	45	45	45	45	32	35	37	38	38	37	34	36	37	37	37	37
R41	45	45	45	45	45	45	31	35	37	37	37	36	33	35	36	36	36	36
R42	35	35	36	38	39	40	25	28	30	31	31	30	26	28	29	29	29	29
R43	35	35	36	38	39	40	23	26	28	29	29	28	24	26	27	27	27	27
R44	45	45	45	45	45	45	36	39	41	42	42	41	38	40	41	41	41	41
R45	45	45	45	45	45	45	36	39	41	42	42	40	38	39	40	40	40	40
R46	45	45	45	45	45	45	31	33	35	36	36	35	32	34	35	35	35	35
R47	35	35	36	38	39	40	22	25	27	28	28	27	23	25	26	26	26	26
R48	35	35	36	38	39	40	26	29	31	31	32	31	27	29	30	30	30	30
R49	35	35	36	38	39	40	27	30	32	33	33	31	28	30	31	31	31	31
R50	35	35	36	38	39	40	30	33	35	36	36	35	32	34	34	34	34	34
R51	35	35	36	38	39	40	20	23	25	26	26	25	21	22	23	23	23	23
R52	45	45	45	45	45	45	27	30	32	33	33	32	29	31	32	32	32	32
R53	45	45	45	45	45	45	28	32	33	34	34	33	30	32	33	33	33	33
R54	45	45	45	45	45	45	25	29	31	31	31	30	27	29	30	30	30	30
R55	45	45	45	45	45	45	33	36	38	39	39	38	35	37	38	38	38	38
R56	35	36	38	40	43	45	32	35	37	37	37	36	33	35	36	36	36	36
R57	35	35	36	38	39	40	24	28	30	30	30	29	26	27	28	28	28	28
R58	35	35	36	38	39	40	21	24	26	27	27	26	22	23	24	24	24	24
R59	35	35	36	38	39	40	19	23	25	25	25	24	20	21	22	22	22	22
R60	35	35	36	38	39	40	20	23	25	25	25	24	20	22	23	23	23	23
R61	45	45	45	45	45	45	36	40	41	42	42	41	38	40	41	41	41	41
R62	35	35	36	38	39	40	19	23	25	25	25	24	20	22	22	22	22	22
R63	35	35	36	38	39	40	30	33	35	35	36	34	31	33	34	34	34	34
R64	39	40	42	44	46	49	30	33	35	36	36	35	32	34	35	35	35	35
R65	35	35	36	38	39	40	28	31	33	34	33	32	29	31	32	32	32	32
R66	35	35	36	38	39	40	24	28	29	30	30	29	26	27	28	28	28	28

Appendix G: Noise Contours

REpower MM92 2050KW turbines (7m/s)



Vestas V90 3MW turbines (8m/s) (T2 and T112 operating in low noise mode)

