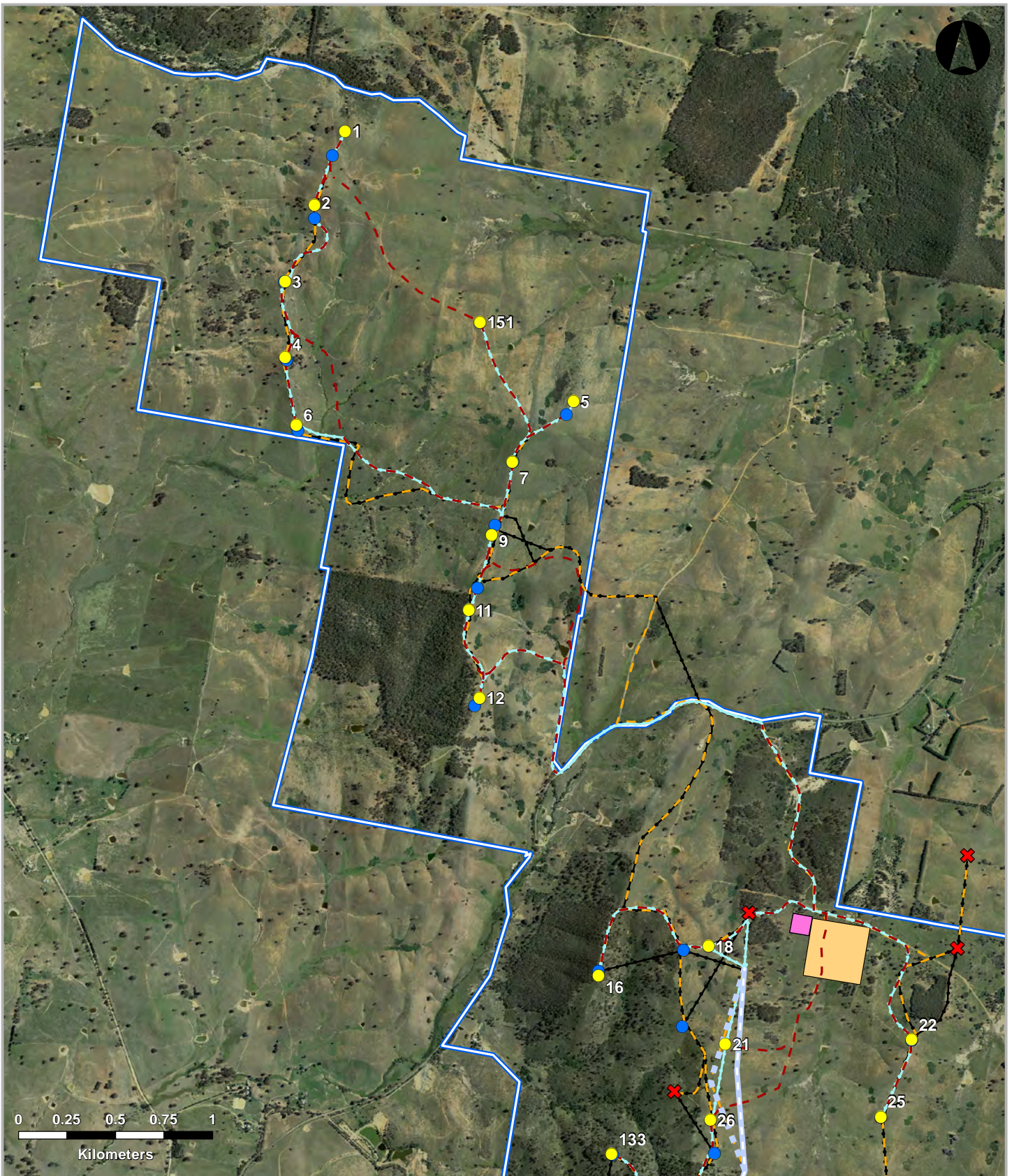


COMPARISON OF CURRENT AND EA 2013 INFRASTRUCTURE INDEX MAP

Rye Park Wind Farm Amended EIS

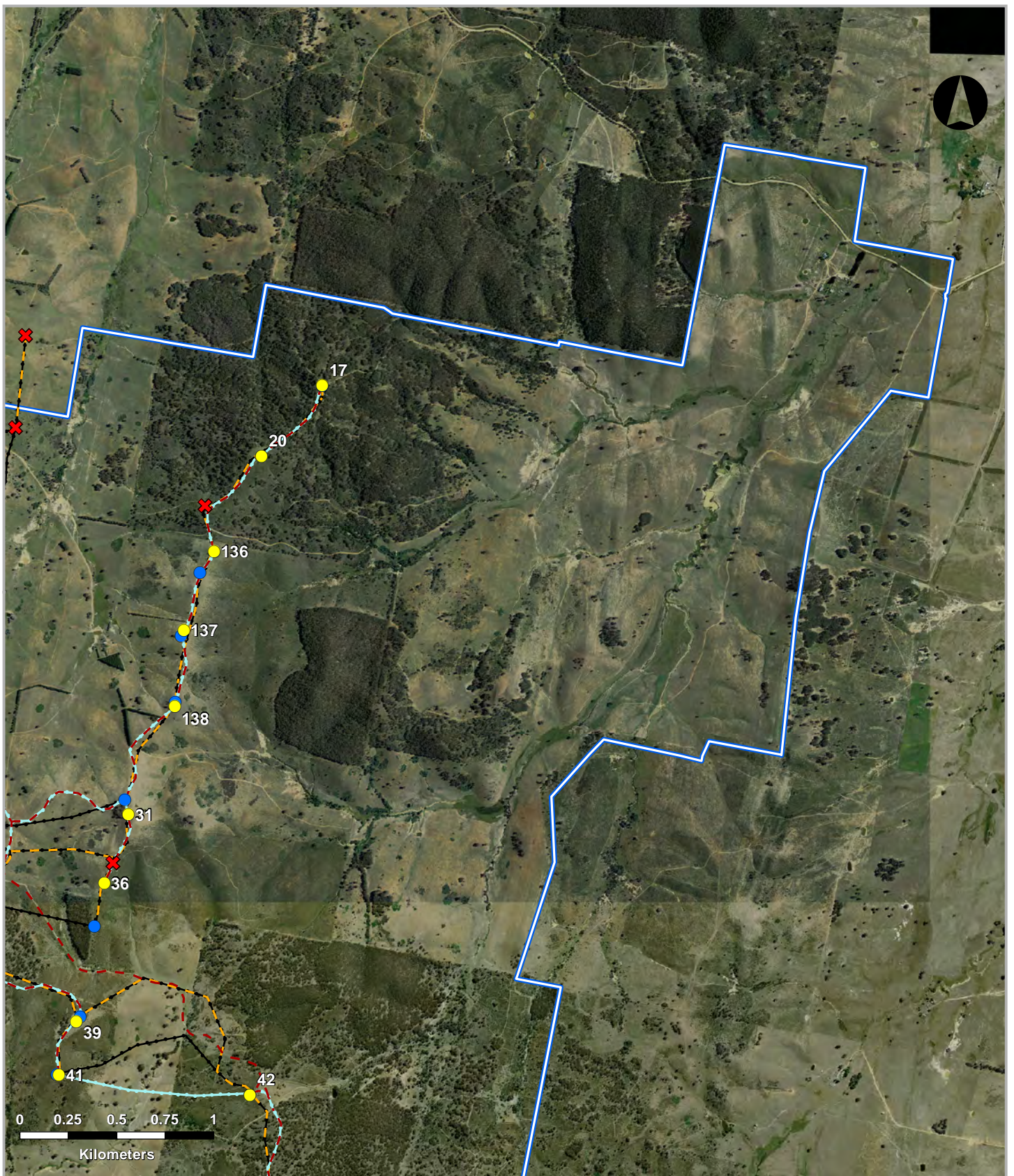
Site perimeter	Collection substation	Relocated turbine	Preferred overhead 330kV powerline
Proposed wind turbine	Connection substation	Removed turbine	Alternative overhead 330kV powerline
Proposed access track	Construction compound	Proposed access track	Preferred overhead 33kV powerline
Proposed underground reticulation	Concrete batching plant	Proposed underground reticulation	Alternative overhead 33kV powerline
Preferred overhead 330kV powerline	O&M building	Preferred overhead 330kV powerline	Collection substation
Alternative overhead 330kV powerline		Alternative overhead 330kV powerline	Connection substation
Preferred overhead 33kV powerline		Preferred overhead 33kV powerline	Construction compound
Alternative overhead 33kV powerline		Alternative overhead 33kV powerline	Concrete batching plant
			O&M building



COMPARISON OF CURRENT & EA 2013 INFRASTRUCTURE MAP 1

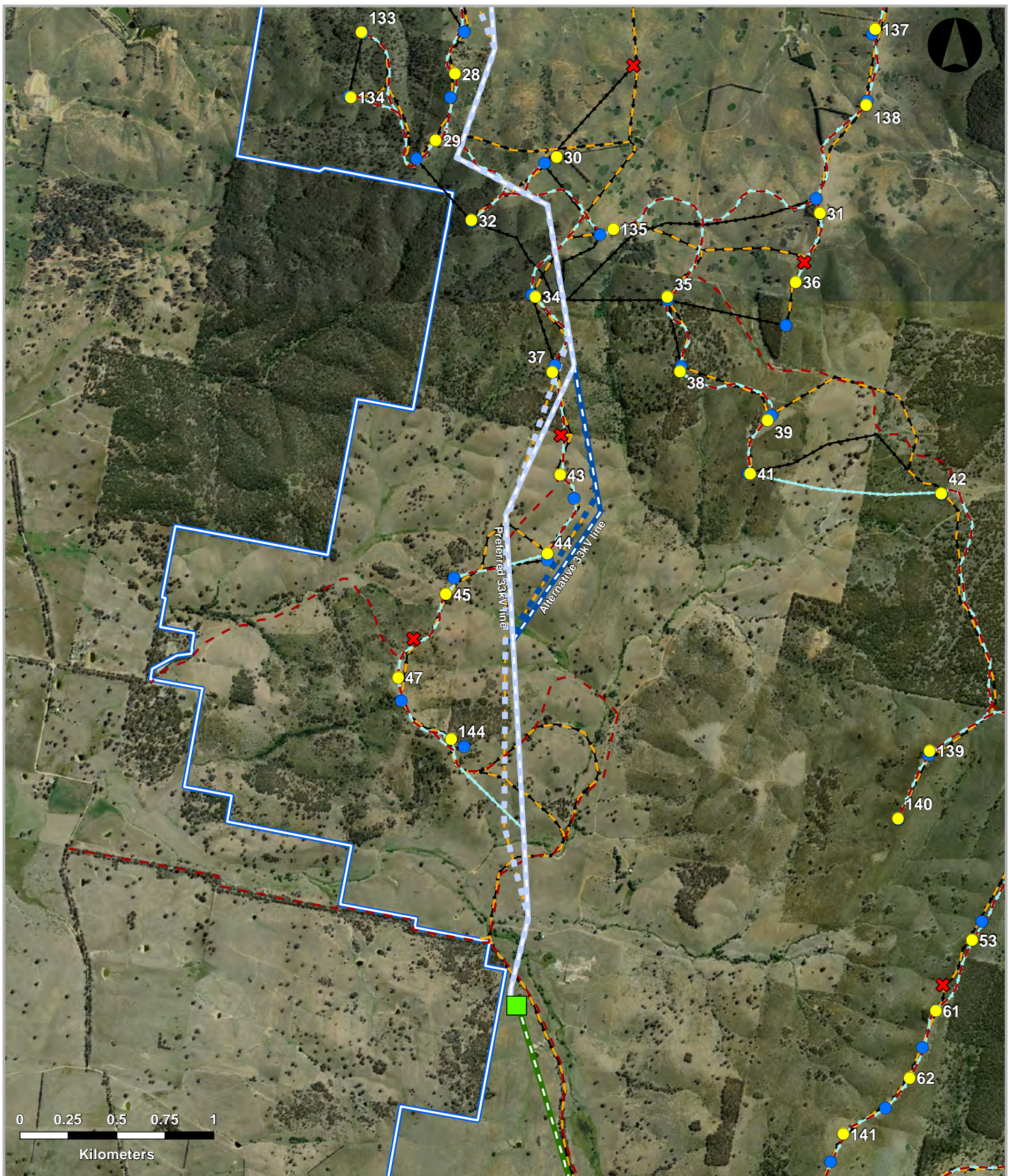
Rye Park Wind Farm Amended EIS

- | | | | |
|--|--|---|---|
| <ul style="list-style-type: none"> Site perimeter Current Layout ● Proposed wind turbine - - - Proposed access track - - - Proposed underground reticulation - - - Preferred overhead 330kV powerline - - - Alternative overhead 330kV powerline - - - Preferred overhead 33kV powerline - - - Alternative overhead 33kV powerline | <ul style="list-style-type: none"> Collection substation Connection substation Construction compound Concrete batching plant O&M building | <ul style="list-style-type: none"> EA November '13 Layout ● Relocated turbine X Removed turbine - - - Proposed access track - - - Proposed underground reticulation - - - Preferred overhead 330kV powerline - - - Alternative overhead 330kV powerline - - - Preferred overhead 33kV powerline - - - Alternative overhead 33kV powerline | <ul style="list-style-type: none"> Collection substation Connection substation Construction compound Concrete batching plant O&M building |
|--|--|---|---|



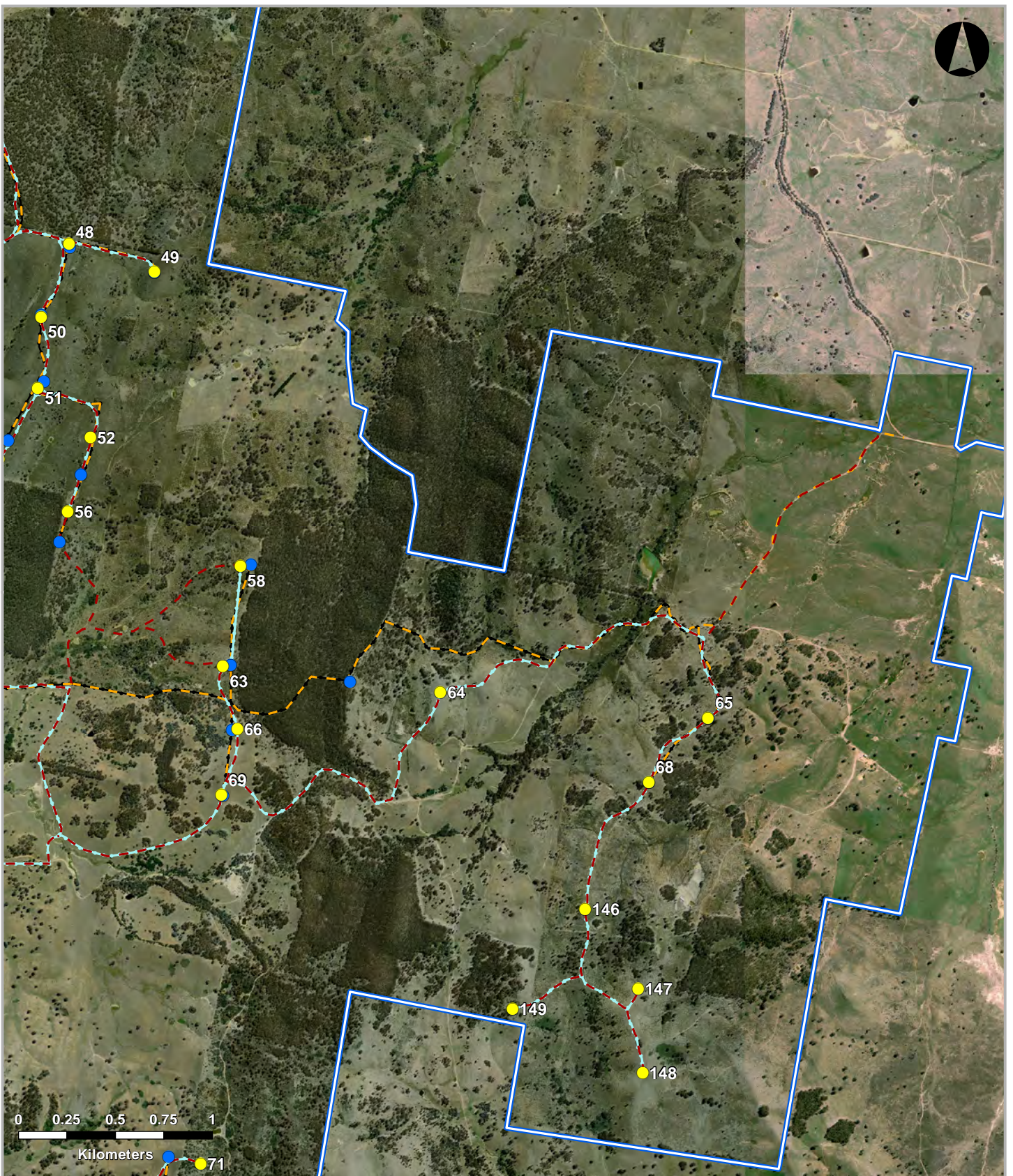
COMPARISON OF CURRENT & EA 2013 INFRASTRUCTURE MAP 2
Rye Park Wind Farm Amended EIS

Site perimeter	Collection substation	Relocated turbine	Collection substation
Proposed wind turbine	Connection substation	Removed turbine	Connection substation
Proposed access track	Construction compound	Proposed access track	Construction compound
Proposed underground reticulation	Concrete batching plant	Proposed underground reticulation	Concrete batching plant
Preferred overhead 330kV powerline	O&M building	Preferred overhead 330kV powerline	O&M building
Alternative overhead 330kV powerline		Alternative overhead 330kV powerline	
Preferred overhead 33kV powerline		Preferred overhead 33kV powerline	
Alternative overhead 33kV powerline		Alternative overhead 33kV powerline	



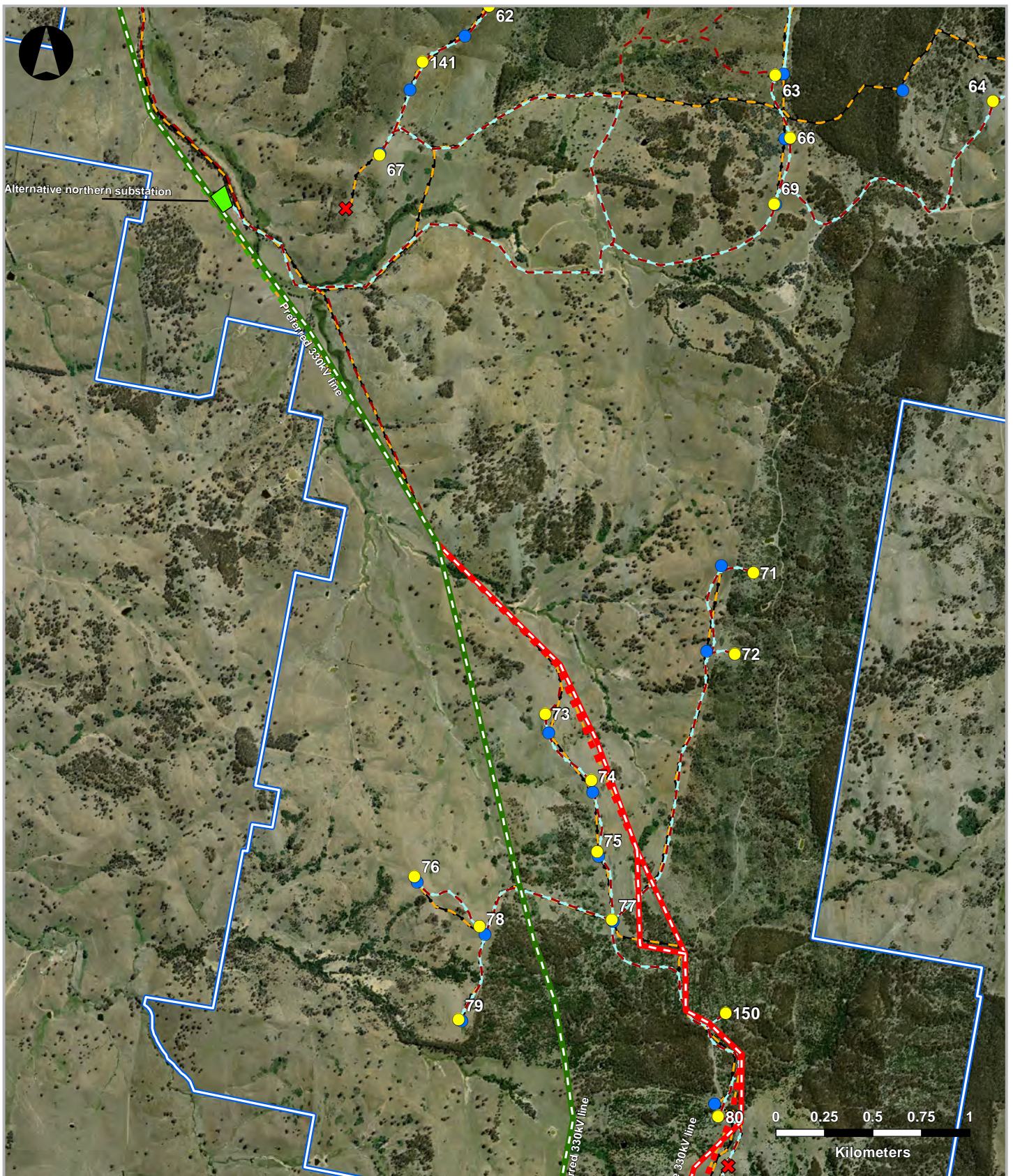
COMPARISON OF CURRENT & EA 2013 INFRASTRUCTURE MAP 3
 Rye Park Wind Farm Amended EIS

- | | | | |
|---|---|---|--|
| <ul style="list-style-type: none"> Site perimeter Current Layout ● Proposed wind turbine - - Proposed access track - - - Proposed underground reticulation - - - Preferred overhead 330kV powerline - - - Alternative overhead 330kV powerline - - - Preferred overhead 33kV powerline - - - Alternative overhead 33kV powerline | <ul style="list-style-type: none"> Collection substation Connection substation Construction compound Concrete batching plant O&M building | <ul style="list-style-type: none"> EA November '13 Layout ● Relocated turbine ✕ Removed turbine - - Proposed access track - - - Proposed underground reticulation - - - Preferred overhead 330kV powerline - - - Alternative overhead 330kV powerline - - - Preferred overhead 33kV powerline - - - Alternative overhead 33kV powerline | <ul style="list-style-type: none"> Collection substation Connection substation Construction compound Concrete batching plant O&M building |
|---|---|---|--|



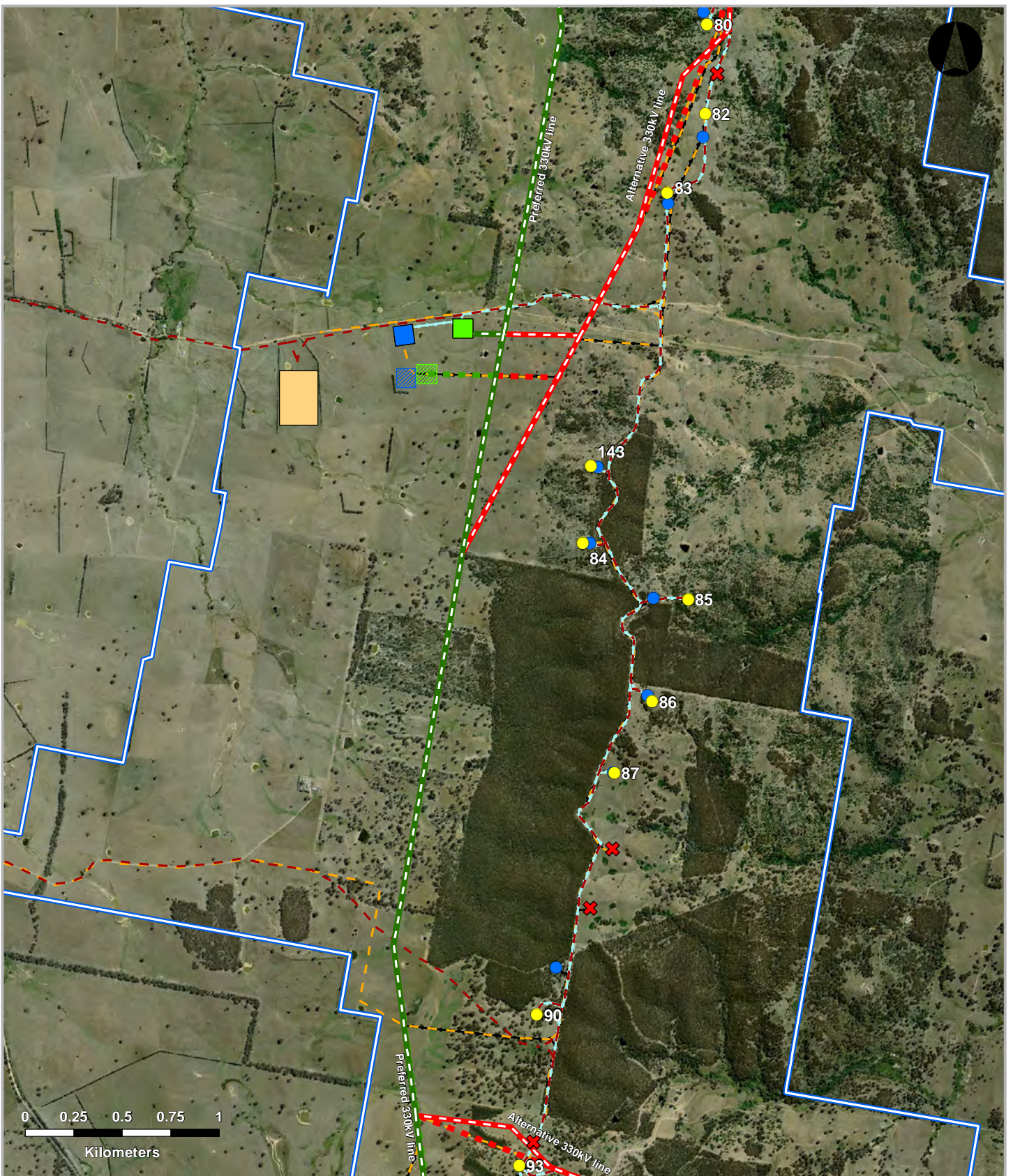
COMPARISON OF CURRENT & EA 2013 INFRASTRUCTURE MAP 4
 Rye Park Wind Farm Amended EIS

- | | | | |
|---|--|--|---|
| <ul style="list-style-type: none"> Site perimeter Current Layout ● Proposed wind turbine - - - Proposed access track - - - Proposed underground reticulation - - - Preferred overhead 330kV powerline - - - Alternative overhead 330kV powerline - - - Preferred overhead 33kV powerline - - - Alternative overhead 33kV powerline | <ul style="list-style-type: none"> Collection substation Connection substation Construction compound Concrete batching plant O&M building | <ul style="list-style-type: none"> EA November '13 Layout ● Relocated turbine ✘ Removed turbine - - - Proposed access track - - - Proposed underground reticulation - - - Preferred overhead 330kV powerline - - - Alternative overhead 330kV powerline - - - Preferred overhead 33kV powerline - - - Alternative overhead 33kV powerline | <ul style="list-style-type: none"> Collection substation Connection substation Construction compound Concrete batching plant O&M building |
|---|--|--|---|



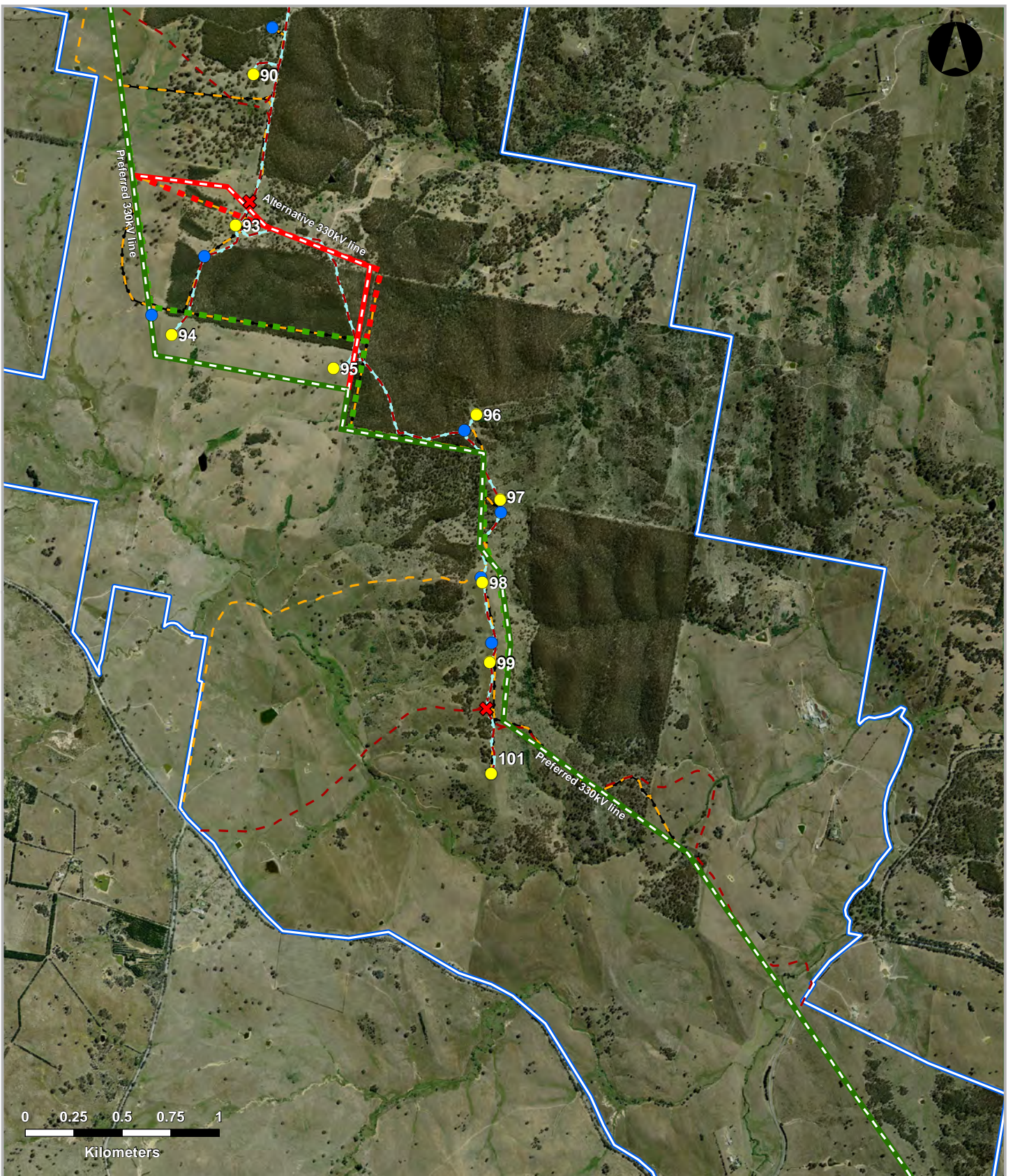
COMPARISON OF CURRENT & EA 2013 INFRASTRUCTURE MAP 5
 Rye Park Wind Farm Amended EIS

- | | | | |
|---|---|--|---|
| <ul style="list-style-type: none"> Site perimeter Current Layout ● Proposed wind turbine - - - Proposed access track - - - Proposed underground reticulation - - - Preferred overhead 330kV powerline - - - Alternative overhead 330kV powerline - - - Preferred overhead 33kV powerline - - - Alternative overhead 33kV powerline | <ul style="list-style-type: none"> Collection substation Connection substation Construction compound Concrete batching plant O&M building | <ul style="list-style-type: none"> EA November '13 Layout ● Relocated turbine ✕ Removed turbine - - - Proposed access track - - - Proposed underground reticulation - - - Preferred overhead 330kV powerline - - - Alternative overhead 330kV powerline - - - Preferred overhead 33kV powerline - - - Alternative overhead 33kV powerline | <ul style="list-style-type: none"> Collection substation Connection substation Construction compound Concrete batching plant O&M building |
|---|---|--|---|



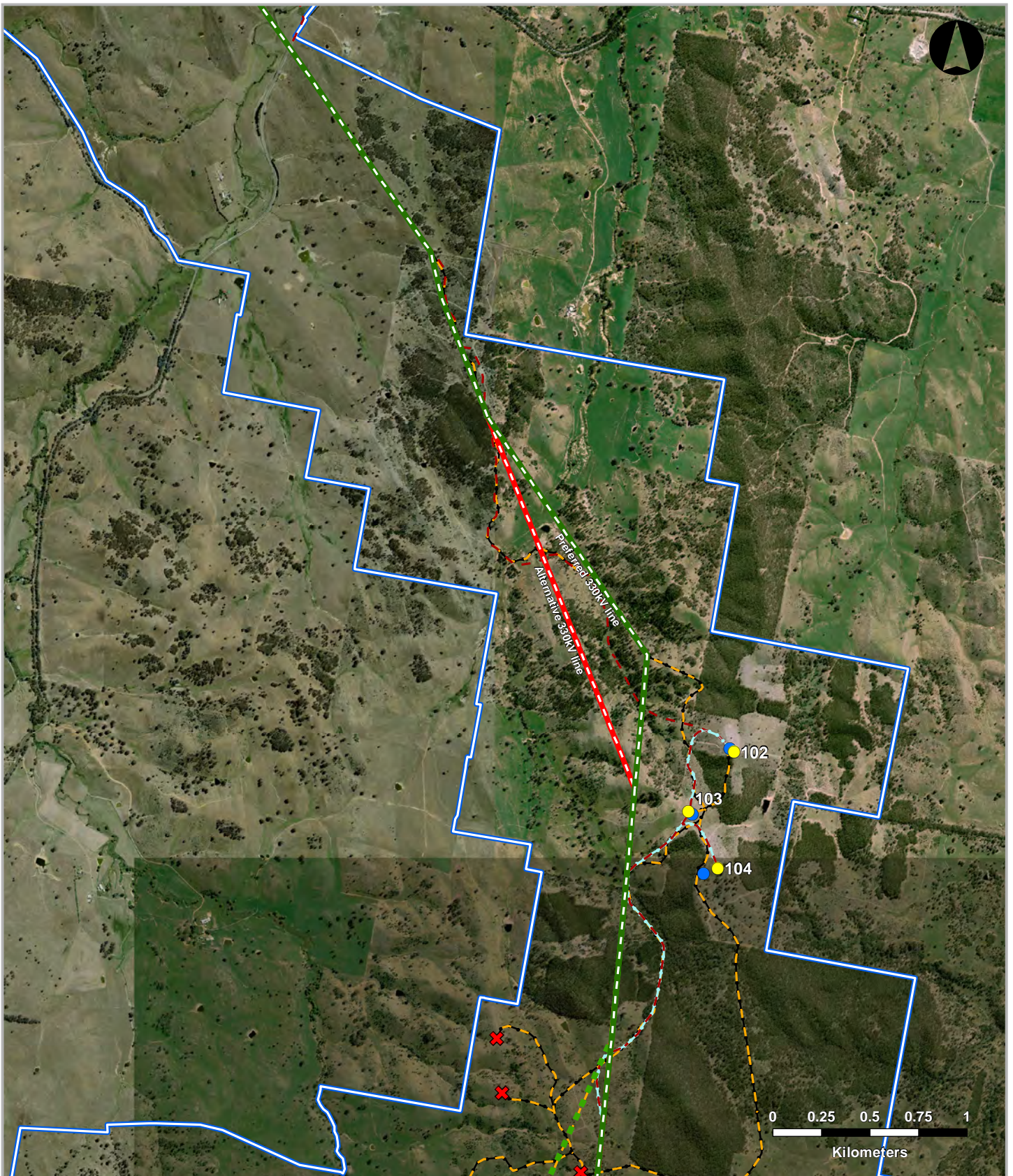
COMPARISON OF CURRENT & EA 2013 INFRASTRUCTURE MAP 6
 Rye Park Wind Farm Amended EIS

- | | | | |
|---|---|--|--|
| <ul style="list-style-type: none"> Site perimeter Current Layout ● Proposed wind turbine - - - Proposed access track - - - Proposed underground reticulation - - - Preferred overhead 330kV powerline - - - Alternative overhead 330kV powerline - - - Preferred overhead 33kV powerline - - - Alternative overhead 33kV powerline | <ul style="list-style-type: none"> Collection substation Connection substation Construction compound Concrete batching plant O&M building | <ul style="list-style-type: none"> EA November '13 Layout ● Relocated turbine ✕ Removed turbine - - - Proposed access track - - - Proposed underground reticulation - - - Preferred overhead 330kV powerline - - - Alternative overhead 330kV powerline - - - Preferred overhead 33kV powerline - - - Alternative overhead 33kV powerline | <ul style="list-style-type: none"> Collection substation Connection substation Construction compound Concrete batching plant O&M building |
|---|---|--|--|



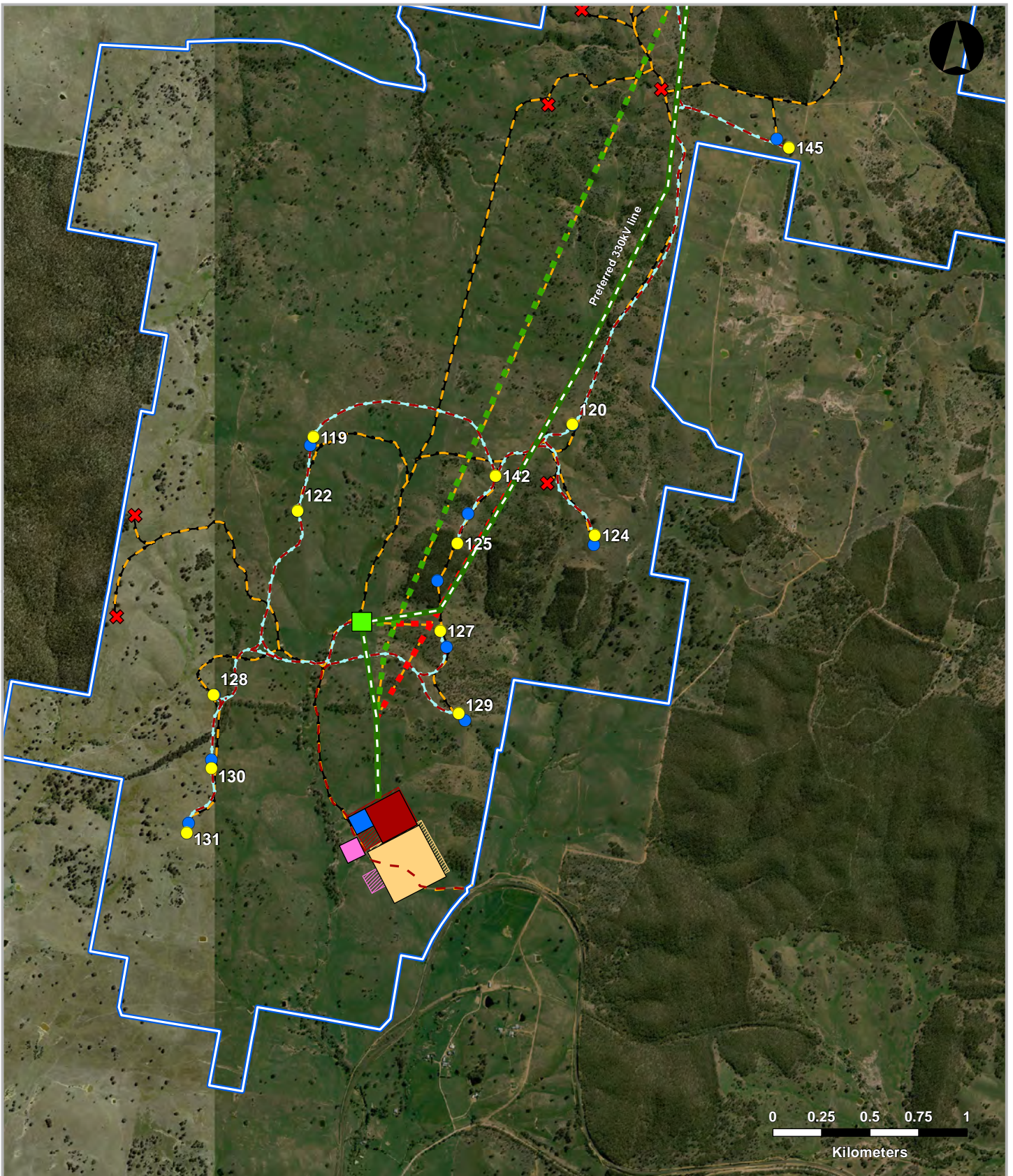
COMPARISON OF CURRENT & EA 2013 INFRASTRUCTURE MAP 7
 Rye Park Wind Farm Amended EIS

- | | | | |
|--|--|--|---|
| <ul style="list-style-type: none"> Site perimeter Current Layout ● Proposed wind turbine Proposed access track Proposed underground reticulation Preferred overhead 330kV powerline Alternative overhead 330kV powerline Preferred overhead 33kV powerline Alternative overhead 33kV powerline | <ul style="list-style-type: none"> Collection substation Connection substation Construction compound Concrete batching plant O&M building | <ul style="list-style-type: none"> EA November '13 Layout ● Relocated turbine X Removed turbine Proposed access track Proposed underground reticulation Preferred overhead 330kV powerline Alternative overhead 330kV powerline Preferred overhead 33kV powerline Alternative overhead 33kV powerline | <ul style="list-style-type: none"> Collection substation Connection substation Construction compound Concrete batching plant O&M building |
|--|--|--|---|



COMPARISON OF CURRENT & EA 2013 INFRASTRUCTURE MAP 8
 Rye Park Wind Farm Amended EIS

- | | | | |
|--------------------------------------|-------------------------|--------------------------------------|--------------------------------------|
| Site perimeter | Collection substation | Relocated turbine | Preferred overhead 330kV powerline |
| Proposed wind turbine | Connection substation | Removed turbine | Alternative overhead 330kV powerline |
| Proposed access track | Construction compound | Proposed access track | Preferred overhead 33kV powerline |
| Proposed underground reticulation | Concrete batching plant | Proposed underground reticulation | Alternative overhead 33kV powerline |
| Preferred overhead 330kV powerline | O&M building | Preferred overhead 330kV powerline | |
| Alternative overhead 330kV powerline | | Alternative overhead 330kV powerline | |
| Preferred overhead 33kV powerline | | Preferred overhead 33kV powerline | |
| Alternative overhead 33kV powerline | | Alternative overhead 33kV powerline | |



COMPARISON OF CURRENT & EA 2013 INFRASTRUCTURE MAP 9
 Rye Park Wind Farm Amended EIS

- | | | | |
|---|---|--|---|
| <ul style="list-style-type: none"> Site perimeter Current Layout ● Proposed wind turbine - - Proposed access track - - - Proposed underground reticulation - - - Preferred overhead 330kV powerline - - - Alternative overhead 330kV powerline - - - Preferred overhead 33kV powerline - - - Alternative overhead 33kV powerline | <ul style="list-style-type: none"> Collection substation Connection substation Construction compound Concrete batching plant O&M building | <ul style="list-style-type: none"> EA November '13 Layout ● Relocated turbine ✕ Removed turbine - - Proposed access track - - - Proposed underground reticulation - - - Preferred overhead 330kV powerline - - - Alternative overhead 330kV powerline - - - Preferred overhead 33kV powerline - - - Alternative overhead 33kV powerline | <ul style="list-style-type: none"> Collection substation Connection substation Construction compound Concrete batching plant O&M building |
|---|---|--|---|